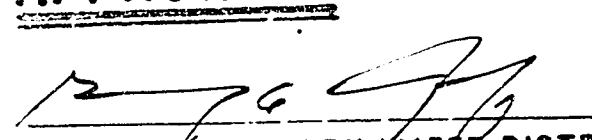


LAS VEGAS VALLEY WATER DISTRICT STANDARD NOTES

- No work shall begin on the water plans until they have been released for construction by the LVVWD. Following approval of the plans, notice shall be given to the LVVWD Customer Service Department (870-4194) 48 hours prior to actual construction, and 24 hours prior to an inspection.
 - Call Before You Dig: 1-800-227-2600
 - All work shall conform to LVVWD latest standard plates, drawings, and specifications.
 - All work, except as modified hereon or by Note 3, shall be done in accordance with the most current draft or edition of the Uniform Standard Specifications for Public Works Construction Office Improvements, Clark County Area.
 - District approved service saddles or tapped collars shall be required on all 3/4" and 1" service laterals. Service saddles only shall be permitted on 1-1/2" and 2" service laterals. Double tapped collars are not permitted.
 - COPPER SERVICE LATERALS:** All 3/4" to 2" service laterals shall be of copper tubing in accordance with the District's specifications and standard plates.
 - The maximum allowable joint deflection for ACP and ductile iron pipe shall be as follows:

Pipe Sizes	ACP	Ductile Iron Slip Joint	Ductile Iron Mechanical Joint
6 inch	2.5 degrees	2.5 degrees	3.5 degrees
8 - 12 inch	2.5 "	2.5 "	2.5 "
14 - 16 inch	2.0 "	1.5 "	1.5 "
18 - 24 inch	N/A	1.5 "	1.5 "
- On PVC pipe, the maximum offset for a 20' length of factory belled pipe shall be 16 inches for 6" pipe, 12 inches for 8" pipe, and 9 inches for 10" and 12" pipe.
- If these offsets conflict with the pipe manufacturer's recommendation, the more stringent requirement shall apply.
- All water meter boxes shall be located outside of driveway areas.
 - All valves shall be located outside of driveways and valley gutters.
 - Detector tape shall be required in accordance with Standard Plate No. 27 where indicated and as follows:
 - over all mains not installed 6 feet from back of curb;
 - over all service laterals not installed at right angles to main.
 - All water mains shall be pressure tested at 200 psi for a continuous two-hour period, in accordance with District Standards.
 - All water mains shall be disinfected, flushed, and an acceptable Health sample obtained, prior to the connection of the water main(s) and/or lateral(s) to the District's system.
 - Contractor to obtain all meters 2" and smaller from LVVWD Central Stores. Telephone 258-3152 forty-eight (48) hours prior to pickup.

RECORD DRAWINGS (PHASE I & II)
 THESE PLANS SHOW RECORD INFORMATION RECEIVED FROM:
 CONTRACTOR: **WELLS CARGO & ACME ELECTRIC**
 DATE: **7/8/92**
 THIS DATA MAY OR MAY NOT REFLECT THE ACTUAL FIELD LOCATIONS. ALL DATA SHOULD BE CONFIRMED PRIOR TO USE ON DEVELOPMENT OR ENGINEERING PLANS.

APPROVALS: PHASE II

 LAS VEGAS VALLEY WATER DISTRICT
 DATE: **7-08-92**

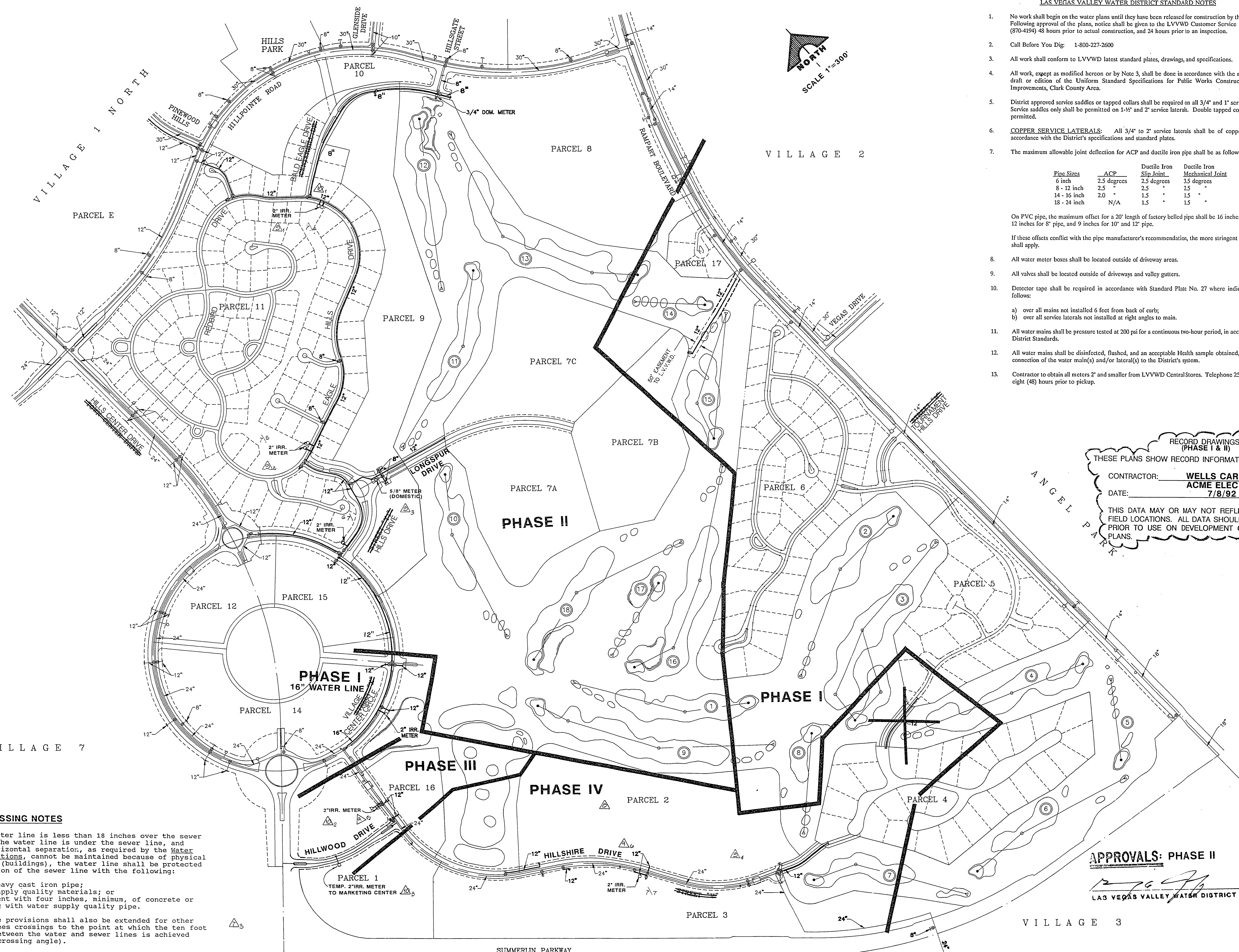
REV	DATE	DESCRIPTION
1	7/18/92	REVISION 017-149-92
2	7/18/92	REVISION 017-149-92
3	7/18/92	REVISION 017-149-92
4	7/18/92	REVISION 017-149-92
5	7/18/92	REVISION 017-149-92
6	7/18/92	REVISION 017-149-92
7	7/18/92	REVISION 017-149-92
8	7/18/92	REVISION 017-149-92
9	7/18/92	REVISION 017-149-92
10	7/18/92	REVISION 017-149-92
11	7/18/92	REVISION 017-149-92
12	7/18/92	REVISION 017-149-92
13	7/18/92	REVISION 017-149-92
14	7/18/92	REVISION 017-149-92
15	7/18/92	REVISION 017-149-92
16	7/18/92	REVISION 017-149-92
17	7/18/92	REVISION 017-149-92
18	7/18/92	REVISION 017-149-92
19	7/18/92	REVISION 017-149-92
20	7/18/92	REVISION 017-149-92

RECOMMENDED
 CHRISTOPHER W. ANDERSON
 10/10/92
 6-5-01

G. C. WALLACE, INC.
 Engineering/Architecture
 1555 SOUTH RAINBOW BLVD. LAS VEGAS, NEVADA 89102

HOWARD HUGHES PROPERTIES
 SUMMERLIN - VILLAGE 1 SOUTH PHASE II
 WATER MAP

SHEET
W-0
 SHT 19 OF 44



WATER CROSSING NOTES

"Where the water line is less than 18 inches over the sewer line, where the water line is under the sewer line, and where the horizontal separation, as required by the Water Supply Regulations, cannot be maintained because of physical obstructions (buildings), the water line shall be protected by construction of the sewer line with the following:

- Extra heavy cast iron pipe;
- Water supply quality materials; or
- Encasement with four inches, minimum, of concrete or sleeving with water supply quality pipe.

Each of these provisions shall also be extended for other than 90 degree crossings to the point at which the ten foot separation between the water and sewer lines is achieved (10/sine of crossing angle).

22-2-21 107-11815