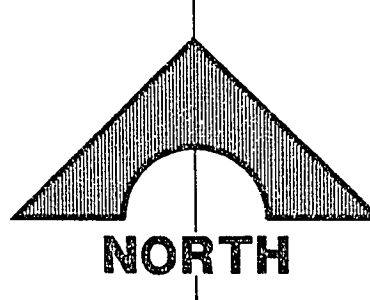


CURVE NO.	DELTA	RADIUS	LENGTH	TANGENT	DESCRIPTION
1	09°57'11"	2000.00'	347.43'	174.15'	CENTERLINE

RECORD DRAWINGS  
THESE PLANS SHOW RECORD INFORMATION RECEIVED FROM:

CONTRACTOR WESTERN STATES DATE 5/15/90

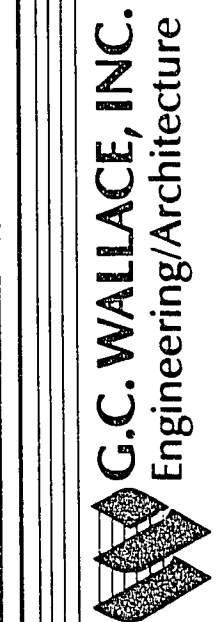
THIS DATA MAY OR MAY NOT REFLECT THE ACTUAL FIELD LOCATIONS. ALL DATA SHOULD BE CONFIRMED PRIOR TO USE ON DEVELOPMENT OR ENGINEERING PLANS.



REV	DATE	DESCRIPTION
A	6/22/90	ISSUE TO BID WATER/SEWER
B	6/23/90	ADDENDUM #2
C	7/20/90	ISSUE FOR CONSTRUCTION
D	8/25/90	CHANGE ORDER #0
E		REVISIONS LVVWD

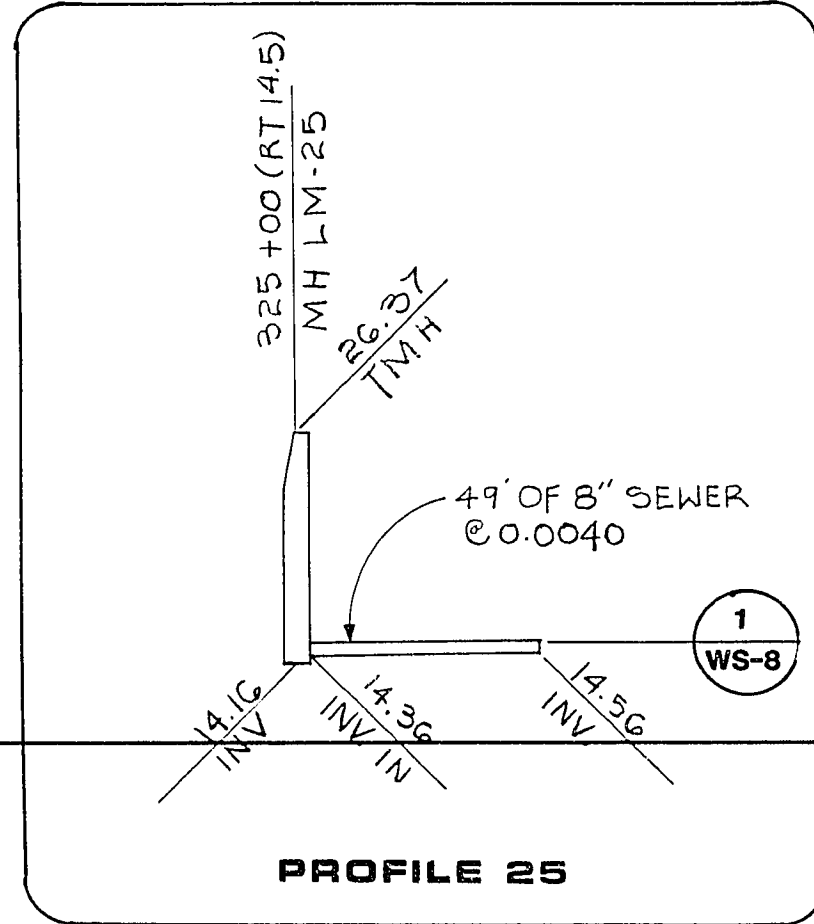
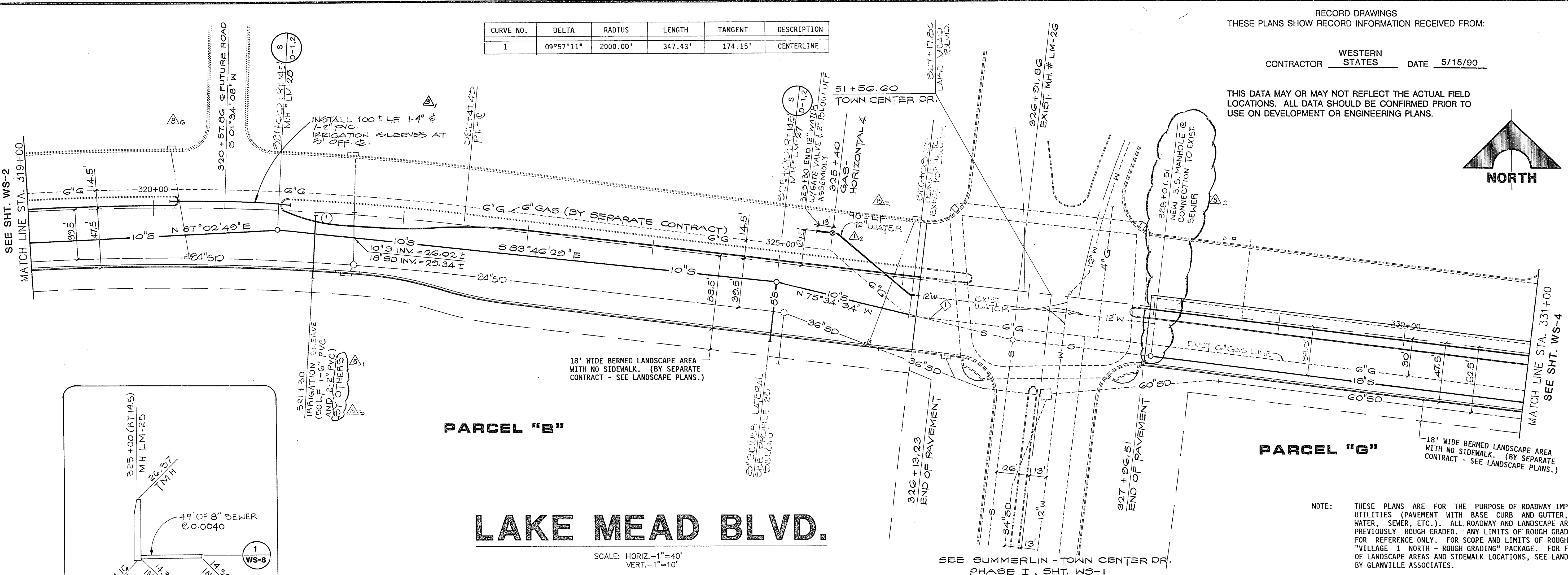
STATE OF NEVADA  
COUNTY OF CLATSOP  
REGISTERED PROFESSIONAL ENGINEER  
NO. 100,700  
G.C. WALLACE, INC.  
Engineering/Architecture

1535 SOUTH RAINBOW BLVD. LAS VEGAS, NEVADA 89102



HOWARD HUGHES PROPERTIES  
VILLAGE 1 NORTH LAKE MEAD BLVD.  
WATER AND SEWER PLAN & PROFILE  
STA. 319+00 TO 331+00

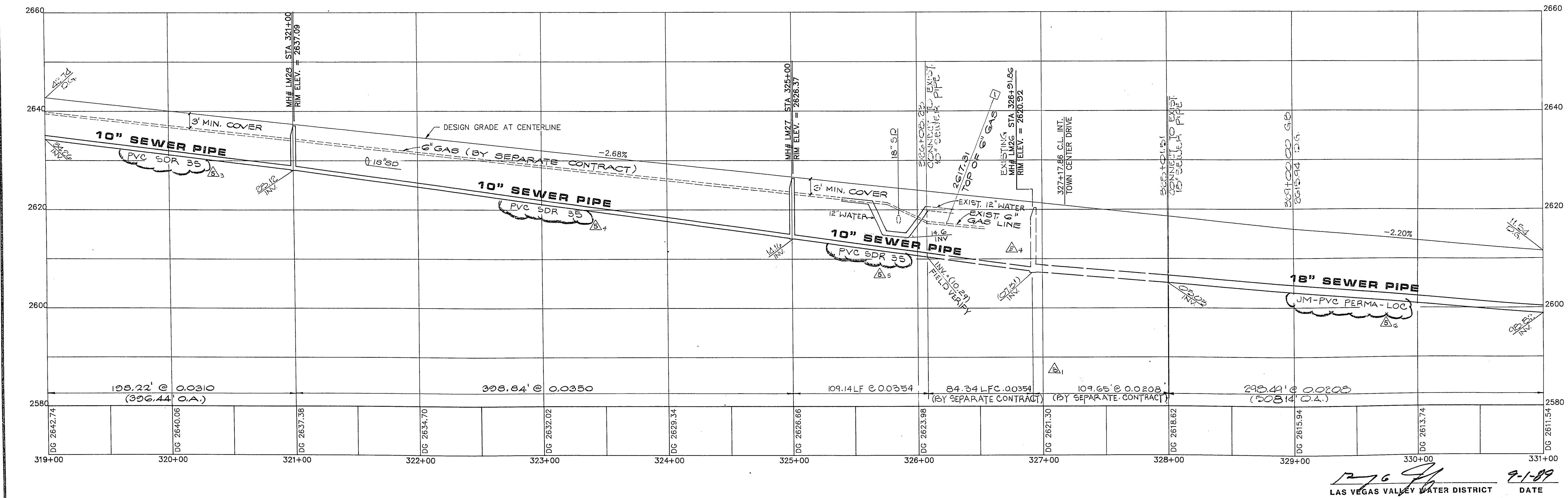
SHEET 6  
WS-3  
OF 11 SHEETS



# LAKE MEAD BLVD.

SCALE: HORIZ.-1"=40'  
VERT.-1"=10'

NOTE: THESE PLANS ARE FOR THE PURPOSE OF ROADWAY IMPROVEMENTS AND UTILITIES (PAVEMENT WITH BASE CURB AND GUTTER, STORM DRAIN, WATER, SEWER, ETC.). ALL ROADWAY AND LANDSCAPE AREAS HAVE PREVIOUSLY BEEN ROUGH GRADED. ANY LIMITS OF ROUGH GRADING SHOWN ARE FOR REFERENCE ONLY. FOR SCOPE AND LIMITS OF ROUGH GRADING, SEE "VILLAGE 1 NORTH - ROUGH GRADING" PACKAGE. FOR FINISH GRADING OF LANDSCAPE AREAS AND SIDEWALK LOCATIONS, SEE LANDSCAPE PACKAGE BY GLANVILLE ASSOCIATES.



DATE 7-1-89  
LAS VEGAS VALLEY WATER DISTRICT

307-V650

JOB NO. 620.314

8184 DIETERICH-POST 65328