

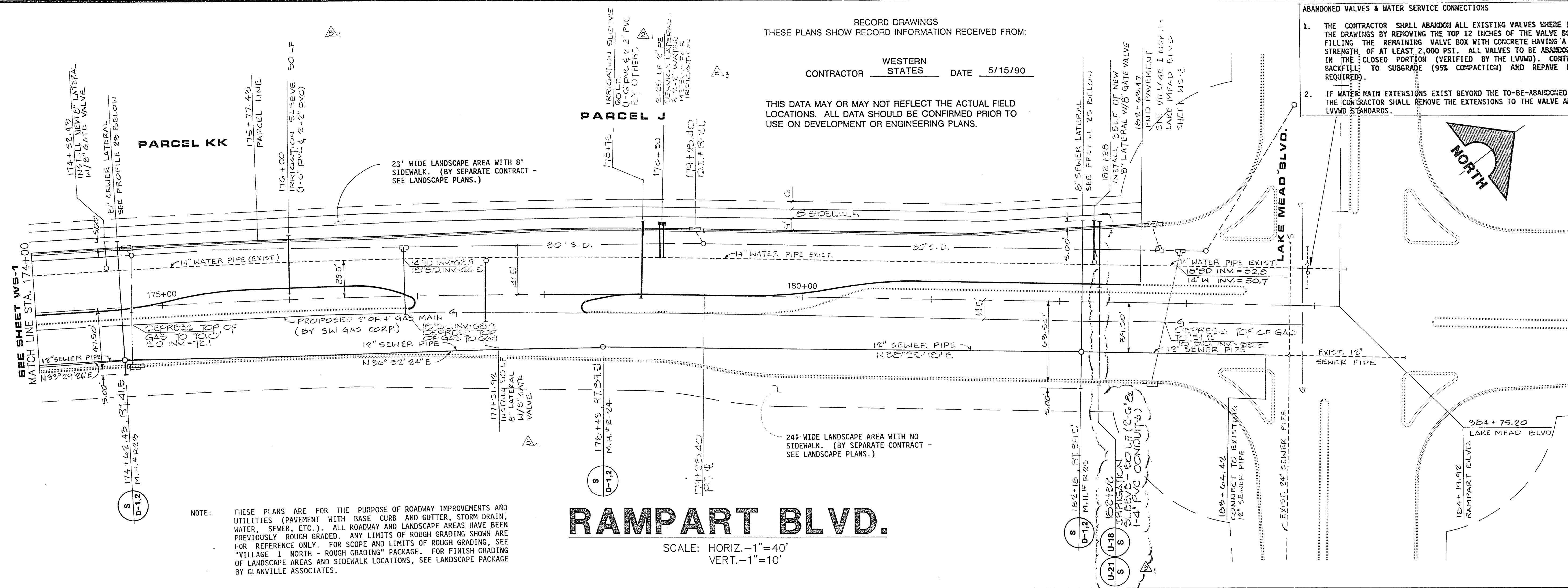
RECORD DRAWINGS
 THESE PLANS SHOW RECORD INFORMATION RECEIVED FROM:

CONTRACTOR WESTERN STATES DATE 5/15/90

THIS DATA MAY OR MAY NOT REFLECT THE ACTUAL FIELD LOCATIONS. ALL DATA SHOULD BE CONFIRMED PRIOR TO USE ON DEVELOPMENT OR ENGINEERING PLANS.

ABANDONED VALVES & WATER SERVICE CONNECTIONS

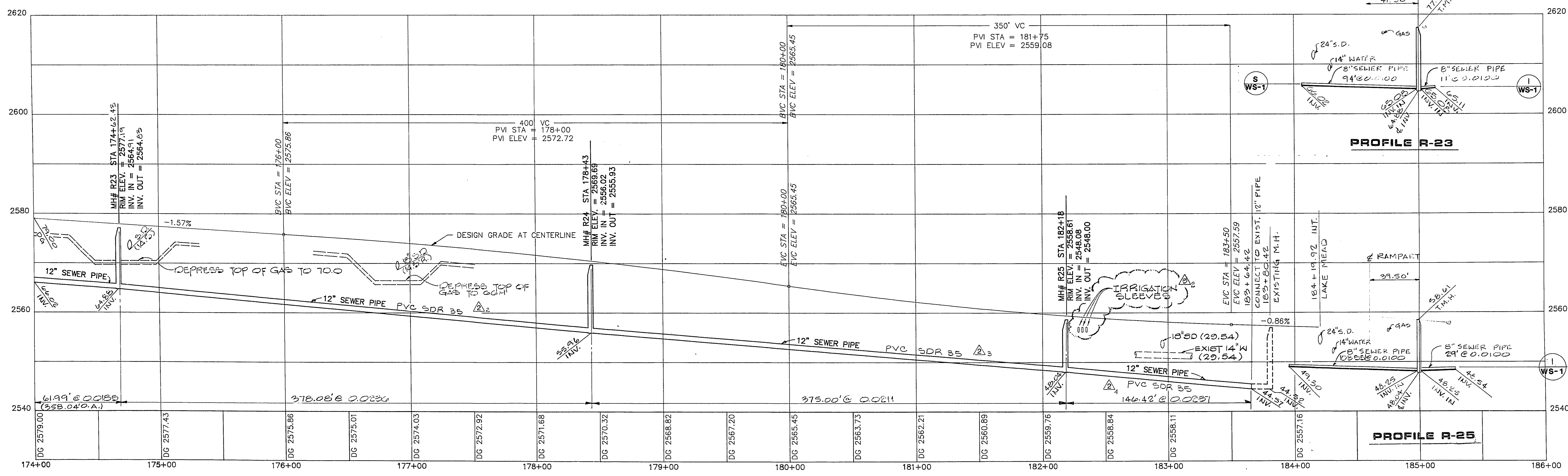
1. THE CONTRACTOR SHALL ABANDON ALL EXISTING VALVES WHERE INDICATED ON THE DRAWINGS BY REMOVING THE TOP 12 INCHES OF THE VALVE BOX, AND THEN FILLING THE REMAINING VALVE BOX WITH CONCRETE HAVING A COMPRESSIVE STRENGTH OF AT LEAST 2,000 PSI. ALL VALVES TO BE ABANDONED SHALL BE IN THE CLOSED PORTION (VERIFIED BY THE LVVWD). CONTRACTOR SHALL BACKFILL TO SUBGRADE (95% COMPACTION) AND REPAVE ROADWAY (IF REQUIRED).
2. IF WATER MAIN EXTENSIONS EXIST BEYOND THE TO-BE-ABANDONED GATE VALVE, THE CONTRACTOR SHALL REMOVE THE EXTENSIONS TO THE VALVE AND RECAP PER LVVWD STANDARDS.



NOTE: THESE PLANS ARE FOR THE PURPOSE OF ROADWAY IMPROVEMENTS AND UTILITIES (PAVEMENT WITH BASE CURB AND GUTTER, STORM DRAIN, WATER, SEWER, ETC.). ALL ROADWAY AND LANDSCAPE AREAS HAVE BEEN PREVIOUSLY ROUGH GRADED. ANY LIMITS OF ROUGH GRADING SHOWN ARE FOR REFERENCE ONLY. FOR SCOPE AND LIMITS OF ROUGH GRADING, SEE "VILLAGE 1 NORTH - ROUGH GRADING" PACKAGE. FOR FINISH GRADING OF LANDSCAPE AREAS AND SIDEWALK LOCATIONS, SEE LANDSCAPE PACKAGE BY GLANVILLE ASSOCIATES.

RAMPART BLVD.

SCALE: HORIZ. - 1" = 40'
 VERT. - 1" = 10'



PROFILE R-23

PROFILE R-25

REV	DATE	DESCRIPTION
A	9/22/89	ISSUE TO BID WATER/SEWER
B	10/13/89	ADDENDUM #2
C	11/20/89	ISSUE FOR CONSTRUCTION
D	12/28/89	CHANGE ORDER #3
E	1/28/90	REVISIONS LVVWD
F	5/15/90	AS-BUILT

HOWARD HUGHES PROPERTIES
 VILLAGE 1 NORTH RAMPART BLVD.
 WATER AND SEWER PLAN
 STA. 174+00 TO 182+63.47

G.C. WALLACE, INC.
 Engineering/Architecture
 1555 SOUTH RAINBOW BLVD., LAS VEGAS, NEVADA 89102

SHEET 5
 WS-2
 OF 5 SHEETS

DATE 9-1-89
 LAS VEGAS VALLEY WATER DISTRICT

307-V649

JOB NO. 620.314

8/4 DIETERICH-POST 63128