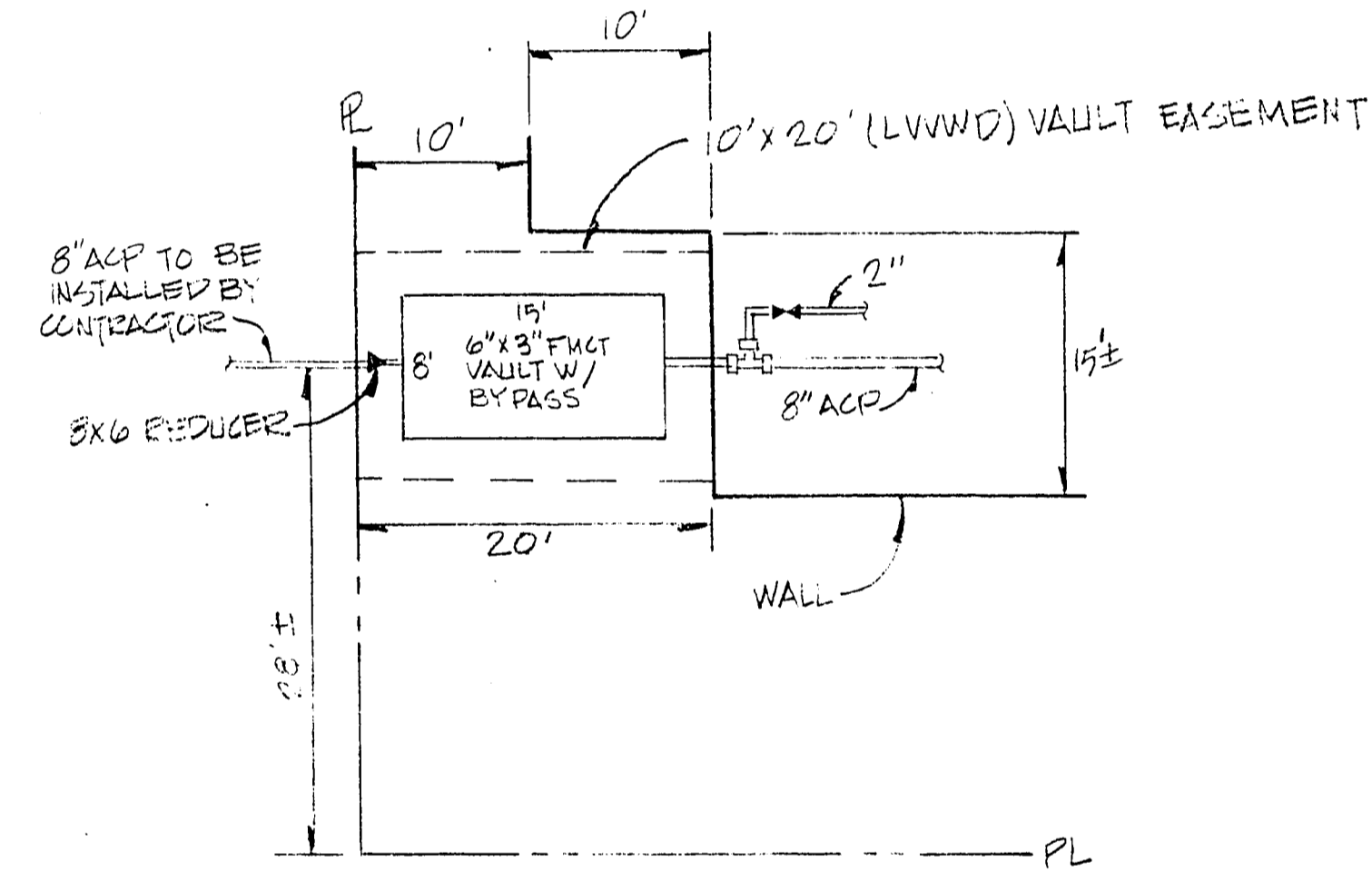
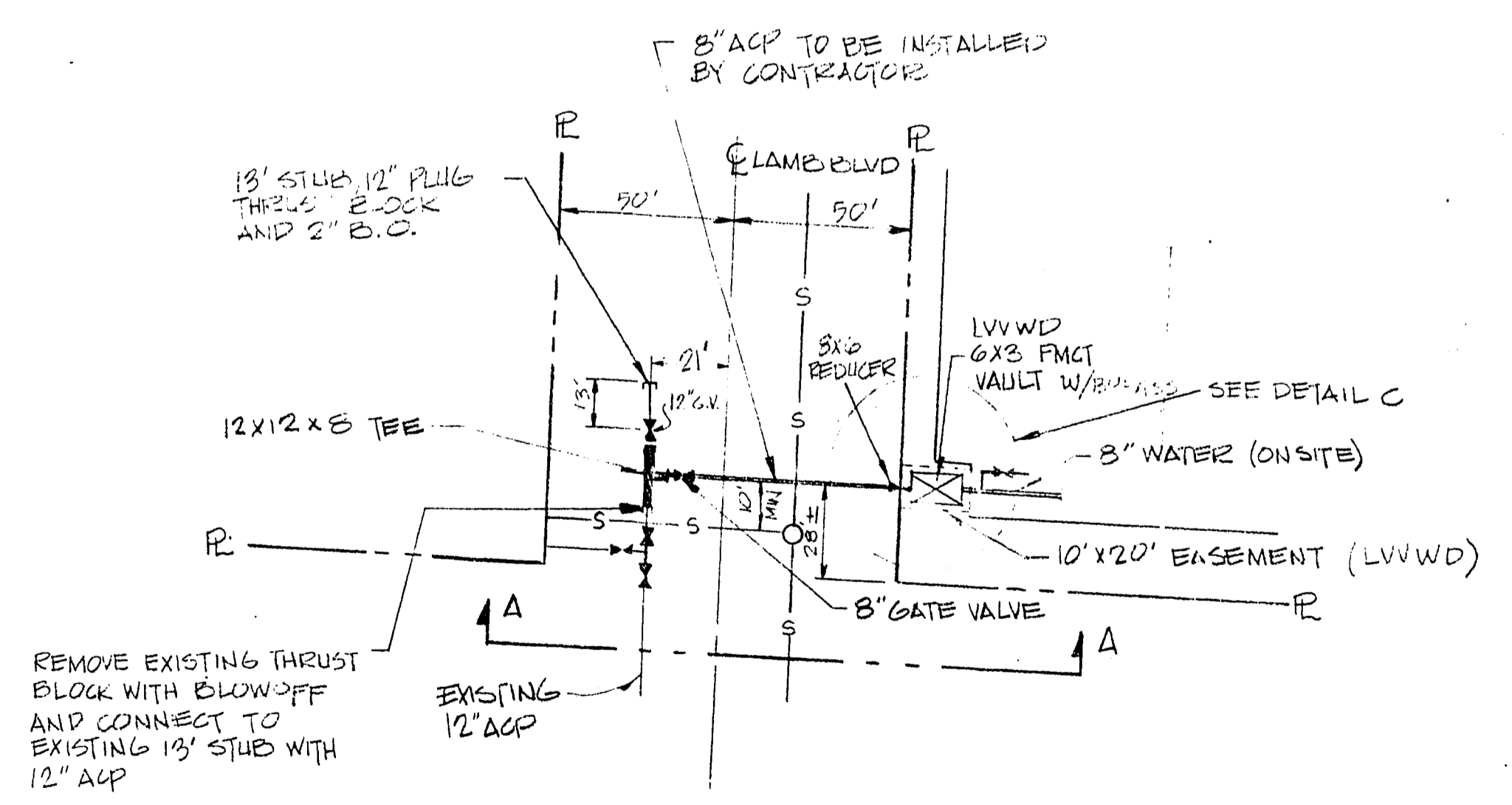


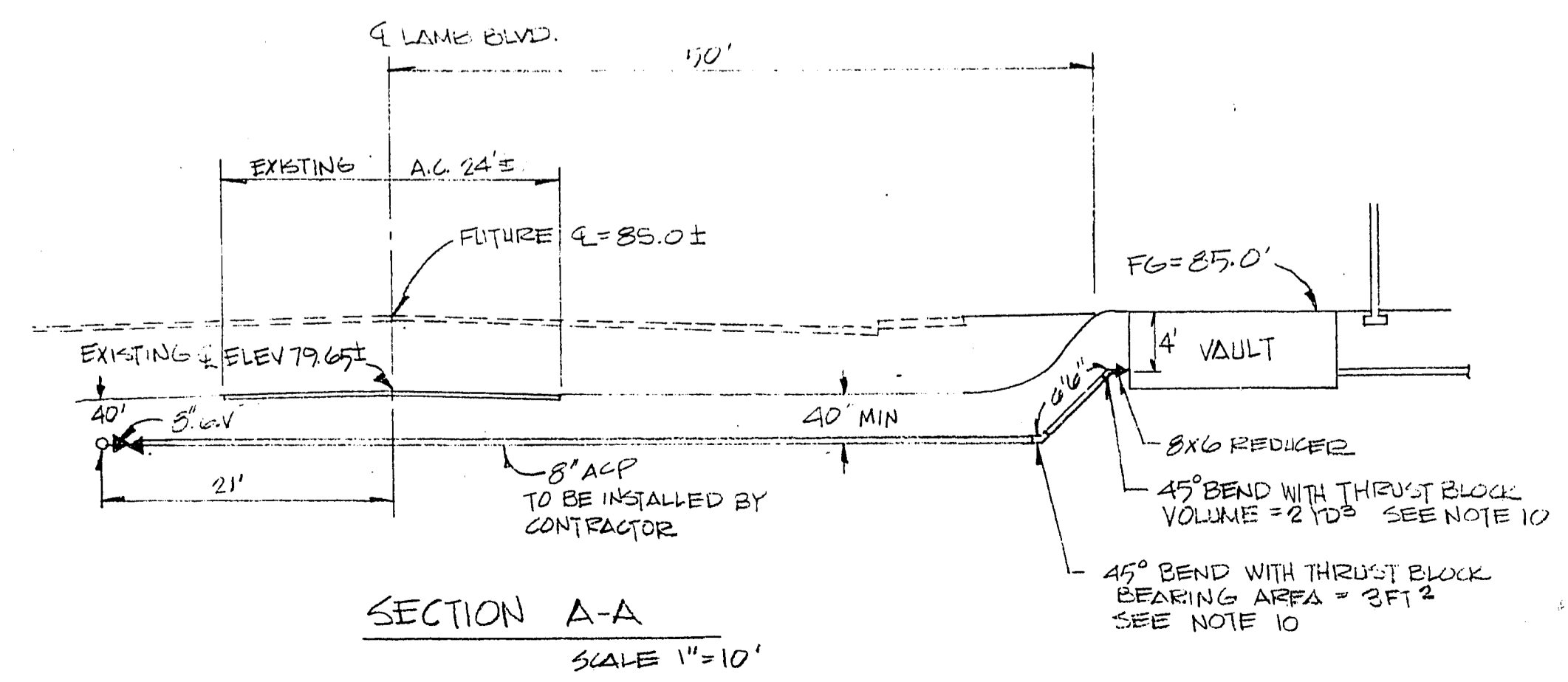
DETAIL (A)
SCALE 1"=200'



DETAIL (B)
SCALE 1"=10'

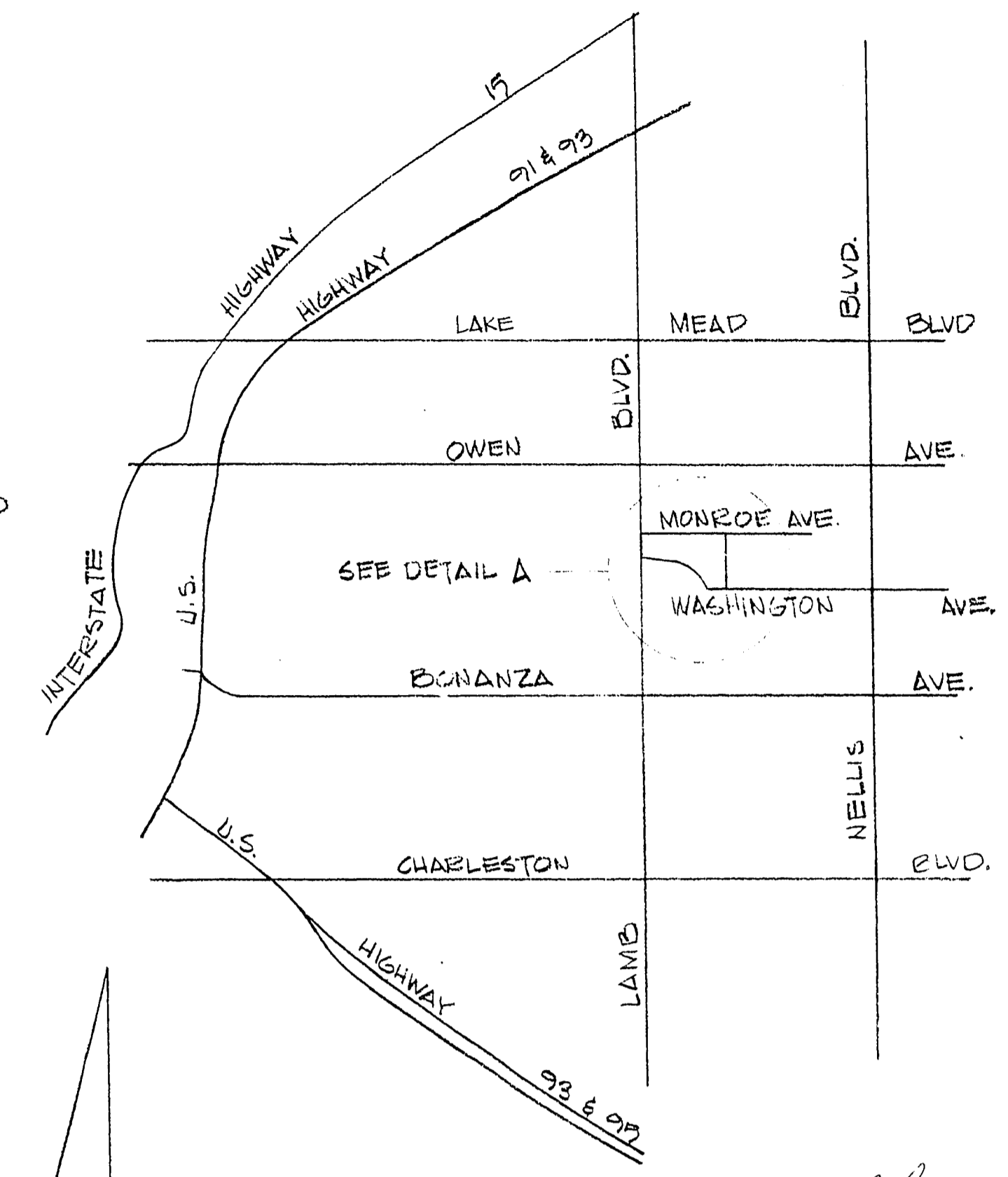


DETAIL (C)
SCALE 1"=40'



SECTION A-A
SCALE 1"=10'

LAS VEGAS



LOCATION MAP
SCALE: NONE

GENERAL NOTES:

1. ALL WORK TO CONFORM TO LAS VEGAS VALLEY WATER DISTRICT STANDARD PRACTICES.
2. ALL WORK, EXCEPT AS MODIFIED HEREON BY NOTE NO. 1, SHALL BE DONE IN ACCORDANCE WITH THE MOST CURRENT DRAFT OR EDITION OF UNIFORM STANDARD SPECIFICATIONS FOR PUBLIC WORKS CONSTRUCTION IMPROVEMENT, CLARK COUNTY AREA.
3. NOTICE TO BE GIVEN ENGINEERING DEPARTMENT OF THE LAS VEGAS VALLEY WATER DISTRICT 48 HOURS PRIOR TO ACTUAL CONSTRUCTION.
4. SERVICE SADDLES OR TAPPED COLLARS WILL BE REQUIRED ON ALL SERVICES, DO NOT USE TAP COLLARS ARE NOT PERMITTED.
5. ALL LINES TO BE PRESSURE TESTED TO 200 PSI.
6. ALL VALVE BOXES SHALL HAVE CONCRETE COLLARS AT SURFACE OF PAVED AREAS.
7. DEFLECTION ANGLE SHALL NOT EXCEED 2 1/2 DEGREES PER 2 FT SECTION OF PIPE FOR PIPE SIZES SMALLER THAN 14 INCHES AND SHALL NOT EXCEED 2 DEGREES FOR PIPE SIZES BETWEEN 14" & 16".

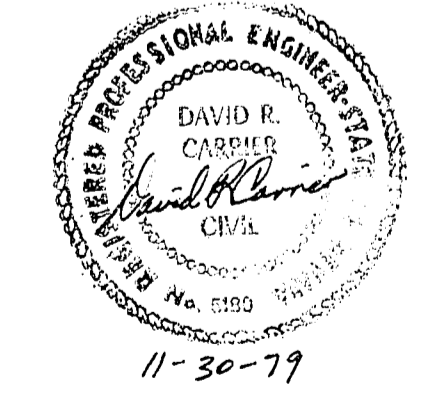
John B. Thompson
QUALITY CONTROL ENGINEER 1/29/80 DATE

John B. Thompson
FIRE MARSHAL 1/29/80 DATE

John B. Thompson
CITY ENGINEER 1/29/81 DATE

8. ALL METERS SHALL BE LOCATED OUTSIDE OF DRIVEWAYS.
9. DETECTOR TAPE REQUIRED IN ACCORDANCE WITH STANDARD PRACTICE NO. 27 WHERE INDICATED AND AS FOLLOWS:
A. COVER ALL MAINS NOT INSTALLED AT 6 FT. FROM BACK OF CURB.
B. COVER ALL SERVICE LATERALS NOT INSTALLED AT RIGHT ANGLES TO MAIN.
10. THRUST BLOCK INSTALLATION PER LAS VEGAS VALLEY WATER DISTRICT STANDARD PRACTICE NO. 5.

David R. Carpio
LVVWD 1-30-80 APPROVAL DATE



ESTIMATED QUANTITIES

12" ACP	25 LF
8" ACP	68 LF
8" G.V.	1 EA
12" G.V.	1 EA
12x8 TEE	1 EA
8x6 REDUCER	1 EA
6x3 FMCT	1 EA

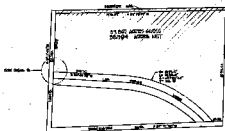
REVISED

10-23-79	APPROVED
11-27-79	APPROVED

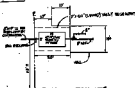
Mobileparks West
VILLA BOREGA MOBILE HOME COMMUNITY
2555 GARDEN ROAD
MONTEREY, CALIFORNIA 93940 (408) 649-0661

DOT. 23 1979

OFFSITE WATER PLAN



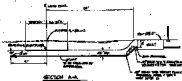
DETAIL A
SCALE 1/8\"/>



DETAIL B
SCALE 1/8\"/>



DETAIL C
SCALE 1/8\"/>



SECTION A-A
SCALE 1/8\"/>



LOCATION MAP
SCALE 1/8\"/>

GENERAL NOTES:

1. ALL WORK IS SUBJECT TO THE USARV TRAFFIC REGULATIONS AND ORDINANCES.
2. ALL WORK SHALL BE DONE IN ACCORDANCE WITH THE USARV TRAFFIC REGULATIONS AND ORDINANCES. THE TRAFFIC REGULATIONS AND ORDINANCES SHALL BE OBTAINED FROM THE USARV TRAFFIC REGULATIONS AND ORDINANCES OFFICE.
3. BEFORE ANY WORK IS DONE, THE USARV TRAFFIC REGULATIONS AND ORDINANCES SHALL BE OBTAINED FROM THE USARV TRAFFIC REGULATIONS AND ORDINANCES OFFICE.
4. ALL WORK SHALL BE DONE IN ACCORDANCE WITH THE USARV TRAFFIC REGULATIONS AND ORDINANCES. THE TRAFFIC REGULATIONS AND ORDINANCES SHALL BE OBTAINED FROM THE USARV TRAFFIC REGULATIONS AND ORDINANCES OFFICE.
5. ALL WORK SHALL BE DONE IN ACCORDANCE WITH THE USARV TRAFFIC REGULATIONS AND ORDINANCES. THE TRAFFIC REGULATIONS AND ORDINANCES SHALL BE OBTAINED FROM THE USARV TRAFFIC REGULATIONS AND ORDINANCES OFFICE.
6. ALL WORK SHALL BE DONE IN ACCORDANCE WITH THE USARV TRAFFIC REGULATIONS AND ORDINANCES. THE TRAFFIC REGULATIONS AND ORDINANCES SHALL BE OBTAINED FROM THE USARV TRAFFIC REGULATIONS AND ORDINANCES OFFICE.
7. THE USARV TRAFFIC REGULATIONS AND ORDINANCES SHALL BE OBTAINED FROM THE USARV TRAFFIC REGULATIONS AND ORDINANCES OFFICE.
8. ALL WORK SHALL BE DONE IN ACCORDANCE WITH THE USARV TRAFFIC REGULATIONS AND ORDINANCES. THE TRAFFIC REGULATIONS AND ORDINANCES SHALL BE OBTAINED FROM THE USARV TRAFFIC REGULATIONS AND ORDINANCES OFFICE.



DATE: 1/1/68
BY: [Signature]

REVISIONS:

NO.	DATE	DESCRIPTION
1	1/1/68	ISSUED