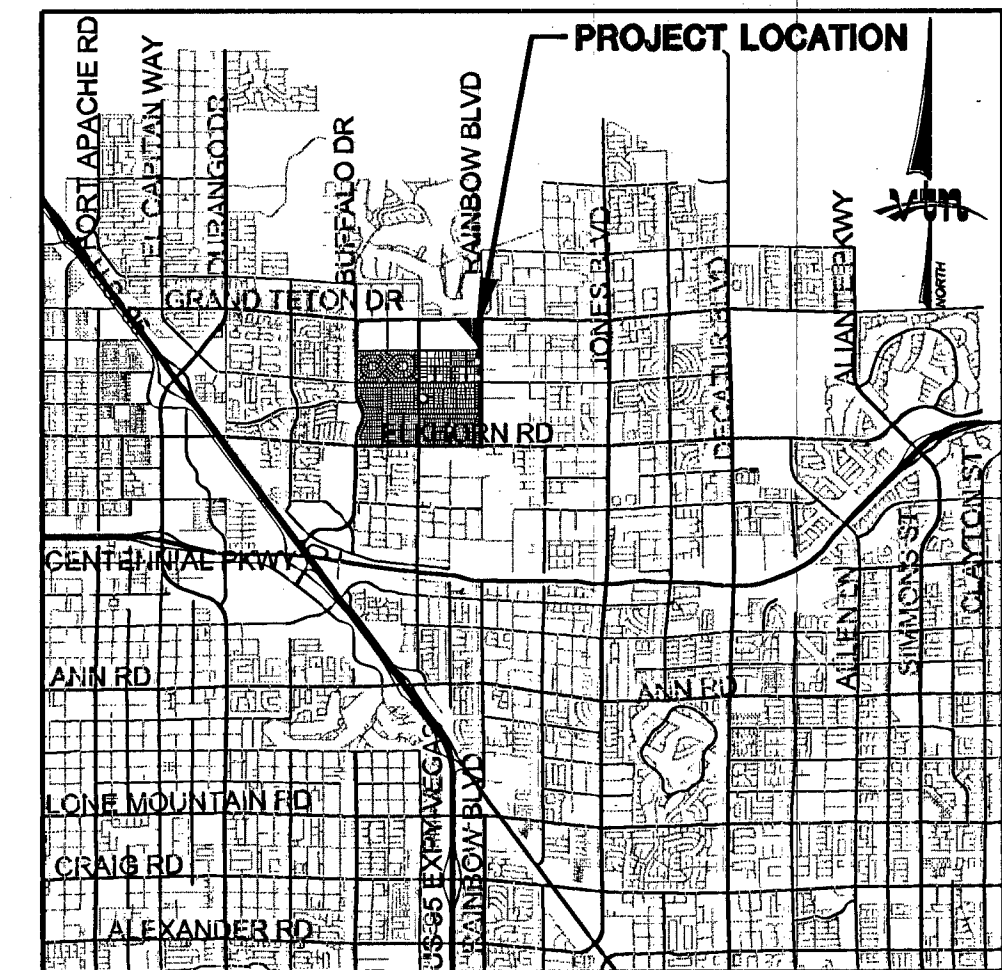
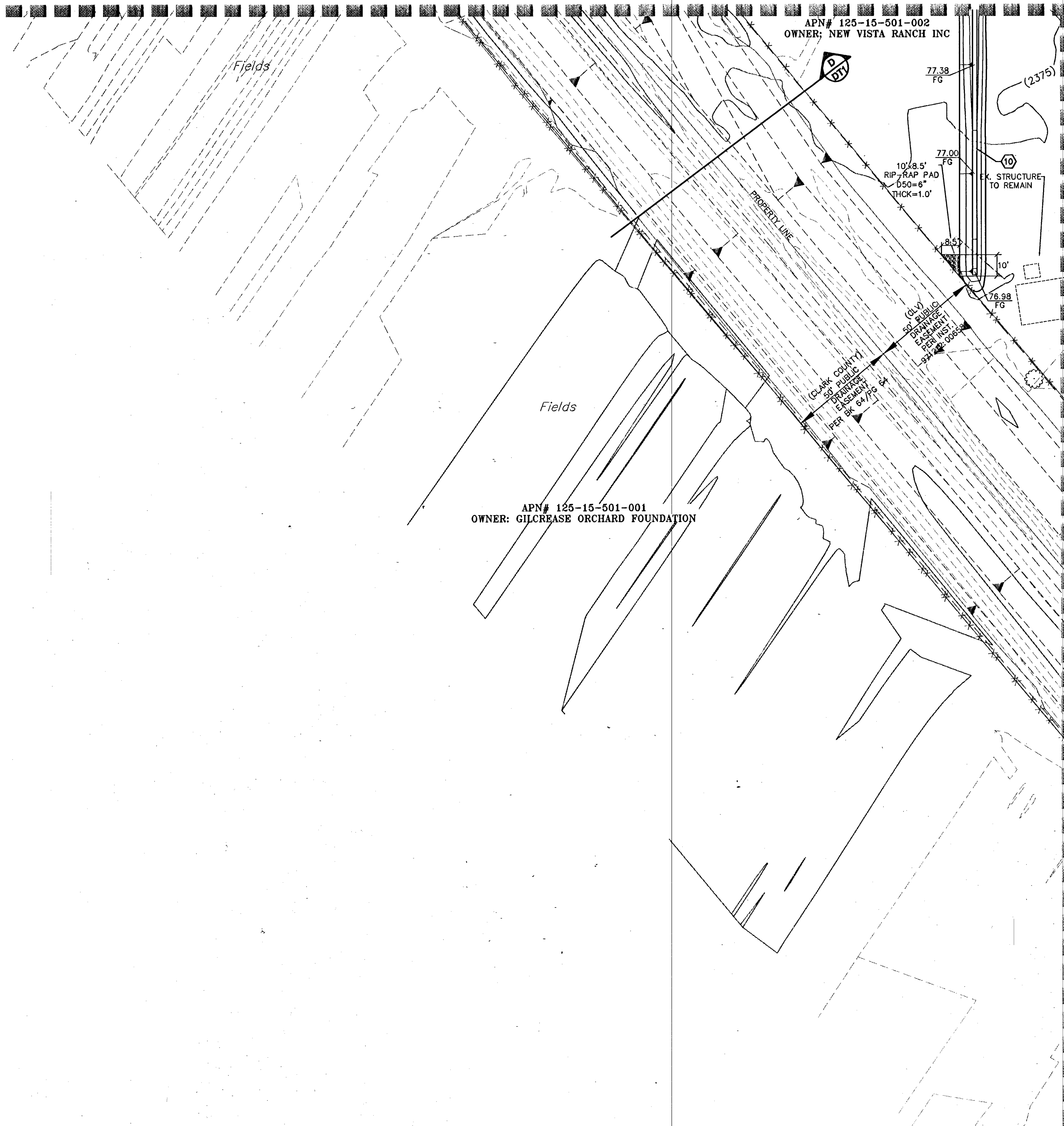


MATCHLINE SEE SHEET GR1



1" = 30'

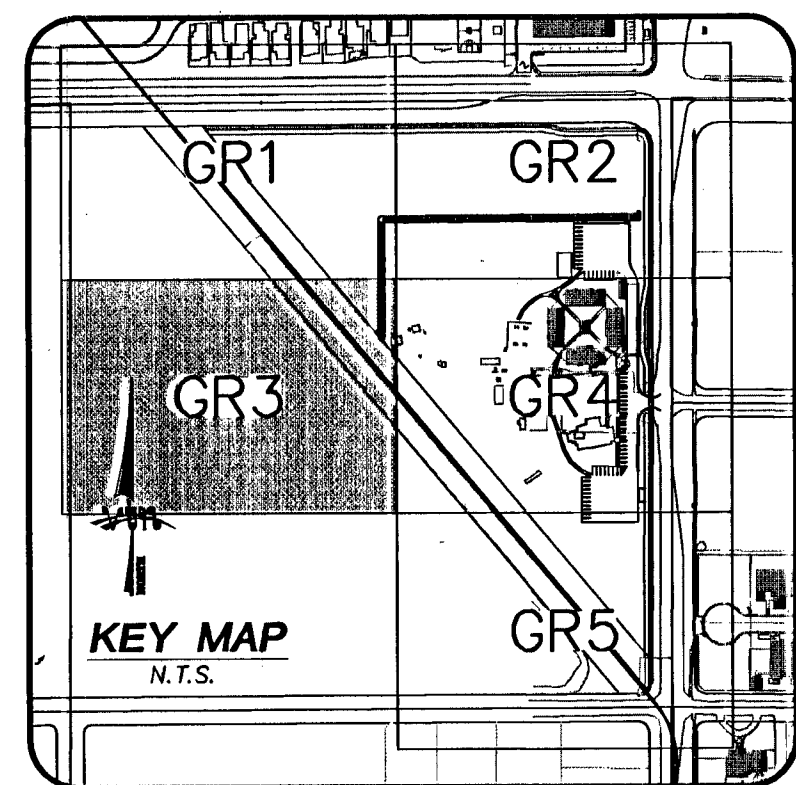
CONSTRUCTION ITEMS

- 1 CONSTRUCT "L" TYPE CURB AND GUTTER PER STD DWG 216.
- 2 CONSTRUCT TYPE "A" CURB PER DETAIL ON SHEET DT1.
- 3 CONSTRUCT O FACE TYPE "A" CURB PER DETAIL ON SHEET DT1.
- 4 FIELD VERIFY AND MATCH EXISTING GRADE.
- 5 SAWCUT AND REMOVE ASPHALT PAVING, MATCH EXISTING EDGE WITH NEW PAVING.
- 6 CONSTRUCT CONCRETE SIDEWALK SEE ARCHITECTURAL PLANS FOR DETAILS.
- 7 CONSTRUCT SIDE WALK UNDERDRAIN PER STD DWG 238.
- 8 CONSTRUCT 2' CURB OPENING
- 9 CONSTRUCT TRASH ENCLOSURE SEE ARCHITECTURAL PLANS FOR STRUCTURAL DETAILS
- 10 CONSTRUCT BERM IMPROVEMENTS FOR DRAINAGE. REFER TO ARCHITECTURAL PLANS FOR LANDSCAPING.
- 11 CONSTRUCT NON-STANDARD 25' MULTI-USE TRAIL WITH 10' SURFACE TREATMENT W/FUTURE PHASE.
- 12 FUTURE "L" TYPE CURB AND GUTTER PER STD DWG 216.
- 13 TEMPORARY 2' AC.
- 14 FUTURE BUS TURNOUT.
- 15 FUTURE 10'x25' BUS SHELTER PAD.
- 16 REMOVE EXISTING SIDE WALK.
- 17 CONSTRUCT 10' CURB TRANSITION, FROM 24" L CURB TO 18" L CURB
- 18 CONSTRUCT 18" "L" TYPE CURB AND GUTTER PER DETAIL ON SHEET DT1

COORDINATION ITEMS

- A INSTALL CONCRETE WHEEL STOPS PER CITY STANDARDS AND SEE ARCHITECTURAL DETAILS.
- B LANDSCAPE AREA, SEE LANDSCAPE PLANS FOR IRRIGATION SCHEMATIC, PLANTING SCHEDULE AND DETAILS.

LEGEND			
TSW	TOP OF SIDEWALK	(2400)	EX. CONTOUR(5' INTERVAL)
EG	EXISTING GROUND	(2400)	EX. CONTOUR(1' INTERVAL)
FG	FINISH GRADE		
FL	FLOW LINE		
TC	TOP OF CURB		PROPOSED CONTOUR
EAC	EDGE OF ASPHALT PAVEMENT		
EX	EXISTING (EXIST)		
VG	VALLEY GUTTER	0.50%	SLOPE AND FLOW DIRECTION
H.P.	HIGH POINT		
L.P.	LOW POINT		
C/L	CENTER LINE		EDGE A.C.
BC	BACK OF CURB		
BCR	BEGIN CURB RETURN		
TF	TOP OF FOOTING		
GB	GRADE BREAK		
PC	POINT OF CURVATURE		
PT	POINT OF TANGENCY		
PRC	POINT OF REVERSE CURVATURE		
PCC	POINT OF COMPOUND CURVATURE		
BVC	BEGIN VERTICAL CURVE		
MVC	MID-POINT OF VERTICAL CURVE		
EVC	END VERTICAL CURVE		
PRVC	POINT OF REVERSE VERTICAL CURVE		
VPI	VERTICAL POINT OF INTERSECTION		
TFW	TOP OF FLOOD WALL		
TOP	TOP OF CHANNEL/SCARP		
TOE	TOE OF CHANNEL/SCARP		
PP	POWER POLE		
TRANS.	TRANSITION		
RET.	RETAINMENT		
INT.	INTERSECTION		
D.S.	DESIGN GRADE		
TSW	TOP OF SIDEWALK		
FF	FINISH FLOOR		
TC/JAC	TOP OF CURB		
CCP	REINFORCED CONCRETE PIPE		
SD	STORM DRAIN		
DI	DROP INLET		
L.S.	LANDSCAPE/AMENITY ZONE		
R/W	RIGHT-OF-WAY		
S/W	SIDEWALK		
OHP	OVERHEAD POWER		
PP	POWER POLE		
T.E.	TRASH ENCLOSURE		



MATCHLINE SEE SHEET GR4

BASIS OF BEARINGS

THE BASIS OF BEARINGS FOR THIS PROJECT IS SOUTH 89°25'13" EAST BEING THE SOUTH LINE OF THE NORTHWEST QUARTER (NW 1/4) OF THE NORTHWEST QUARTER (NW 1/4) OF SECTION 14, TOWNSHIP 19 SOUTH, RANGE 60 EAST, M.D.M., CLARK COUNTY, NEVADA, AS SHOWN ON A RECORD OF SURVEY ON FILE IN THE CLARK COUNTY, NEVADA RECORDER'S OFFICE IN FILE 154 AT PAGE 44.

PROJECT BENCHMARK

PROJECT DATUM: NORTH AMERICAN VERTICAL DATUM OF 1988 (NAVD88)
 CITY OF LAS VEGAS BENCHMARK: 1LV90:115WS
 NAVD88 ELEVATION: 724.3103 METERS (2376.34 FEET)
 RIVET AND PLATE IN TOP OF CURB AT SOUTHEAST CORNER OF RAINBOW AND FLANAGAN.

CONTRACTOR SHALL VERIFY HORIZONTAL AND VERTICAL LOCATION OF EXISTING UTILITIES AND NOTIFY THE DESIGN ENGINEER IMMEDIATELY OF ANY DISCREPANCIES PRIOR TO CONSTRUCTION.

FLOODZONE NOTE:
 According to the Federal Emergency Management Agency (FEMA) Flood Insurance Rate Map (FIRM) Community Panel Number 32003C1765F, Clark County, Nevada, and Incorporated Areas, dated November 16, 2011, the site is located within a Zone "X". A Zone "X" is described as an area outside of the 500-year floodplain.

Call before you Dig
 1-702-455-7511
 CLARK COUNTY TRAFFIC OPERATIONS AND FREEWAY AND ARTERIAL SYSTEM OF TRANSPORTATION

Call before you Overhead
 1-702-227-2929

Call before you Dig
 811 OR 1-800-227-2600

I CERTIFY THAT THIS PLAN IS IN CONFORMANCE WITH THE APPROVED DRAINAGE STUDY (JDS-XXXX) ON FILE AT THE CITY OF LAS VEGAS FOR THIS PROJECT.
 DAVID L. EDWARDS NO. 17880 DATE 3/5/13

<p>NEW VISTA RANCH, INC 5220 W. CHARLESTON BLVD. LAS VEGAS, NV 89146 702-457-4677</p>	<p>CITY OF LAS VEGAS 2727 SOUTH RAINBOW BOULEVARD LAS VEGAS, NEVADA 89146-5148 PH. (702) 973-7500 FAX (702) 362-2587 WEB WWW.VIWNV.COM CONSULTING ENGINEERS • PLANNERS • LAND SURVEYORS</p>
<p>GRADING PLAN</p>	<p>NEW VISTA RANCH PHASE 1</p>
<p>DRAWN BY: SSB AUGUST 2012</p>	<p>DESIGNED BY: SSB AUGUST 2012</p>
<p>CHECKED BY: SSB AUGUST 2012</p>	<p>PROJECT NO: 7431 SCALE: 30 HORIZ. VERT.</p>
<p>PROFESSIONAL ENGINEER - STATE OF NEVADA NO. 17880 CIVIL DAVID L. EDWARDS EXPIRES 12-31-14</p>	
<p>SHEET 10 OF 13 SHEETS DRAWING NO. 107V-3222</p>	