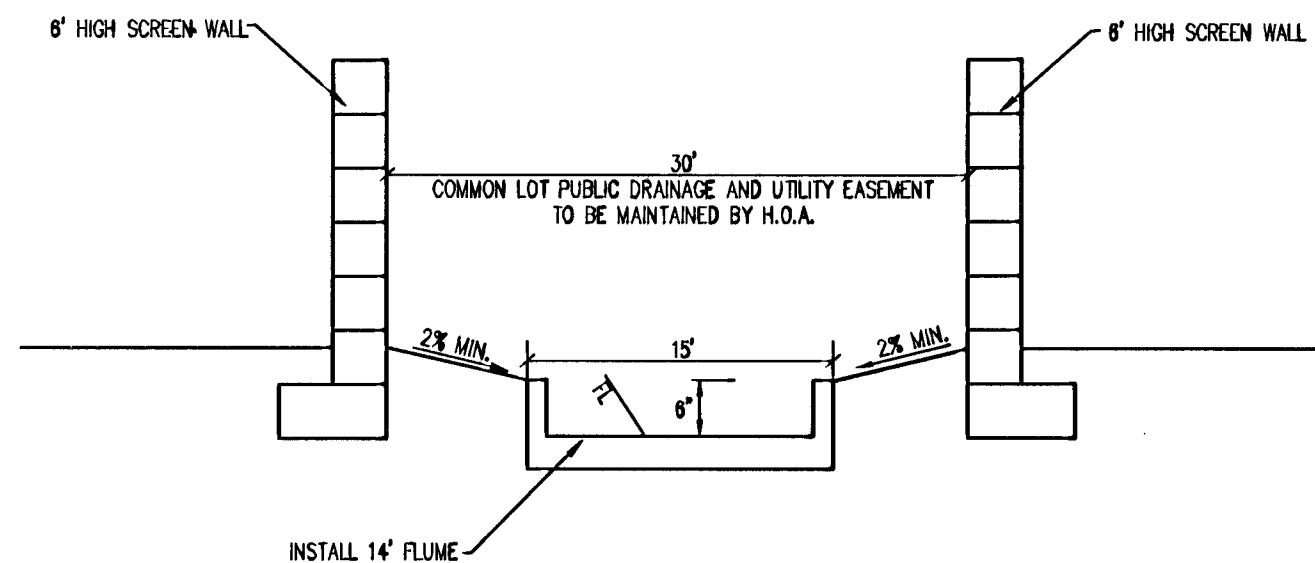


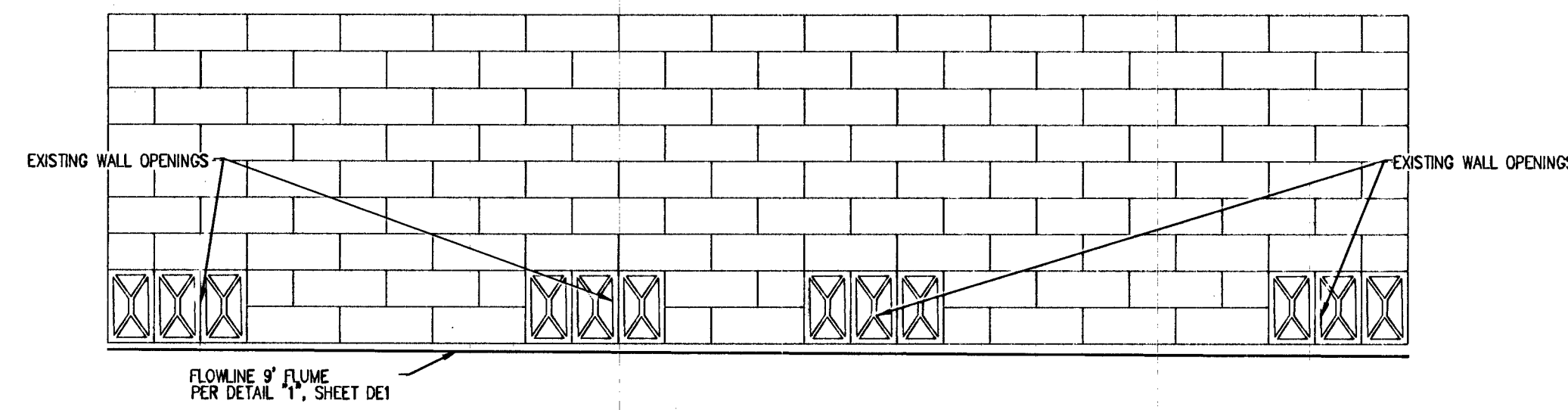
* PAVEMENT SECTIONS THICKNESS TO BE IN ACCORDANCE WITH STANDARD SPECIFICATIONS SECTION 401 AND STANDARD DRAWING 200, USING THE AASHTO MODEL NOTE.

STRUCTURAL SECTION SHOWN IS BASED ON A SUBGRADE "M" VALUE REFERENCED FROM SOILS REPORT FROM ANGLE ENGINEERING PROJ. NUM. 28157-1 DATED AUGUST 19, 2013

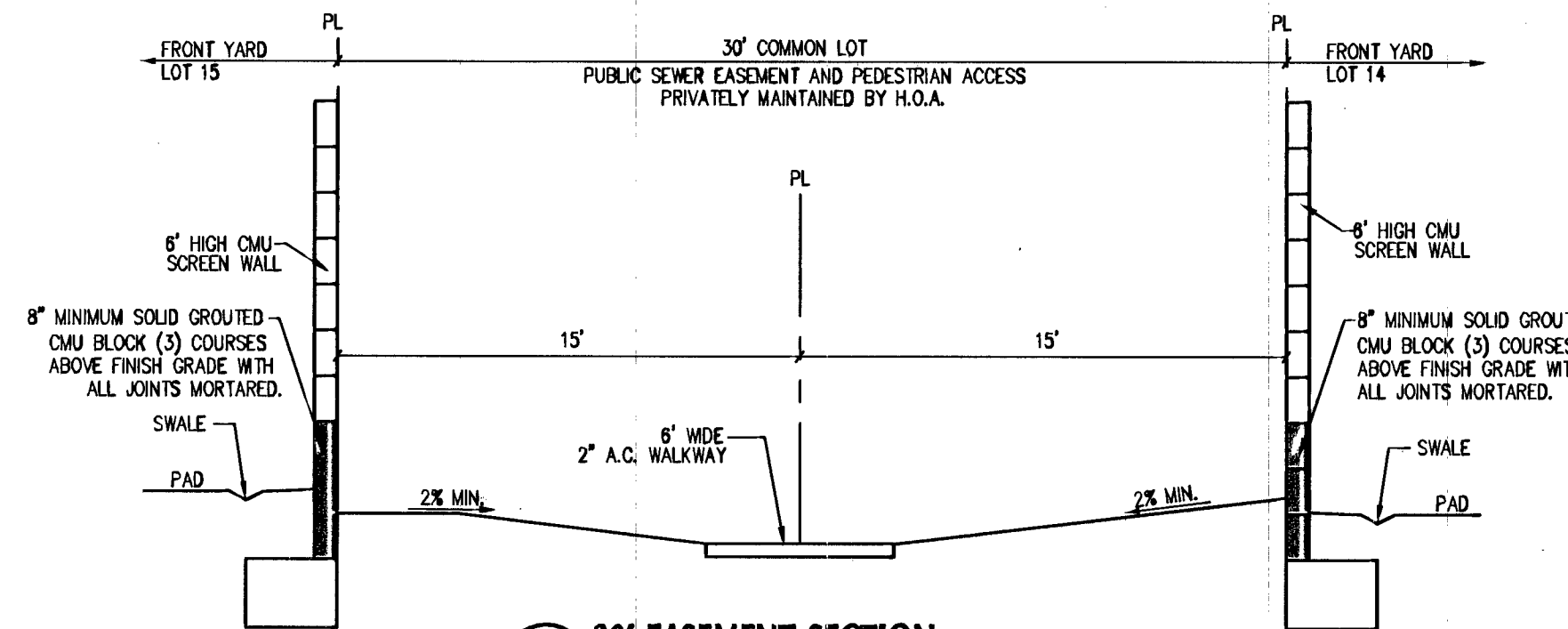
A 60' STREET (PIONEER WAY) PUBLIC
NOT TO SCALE



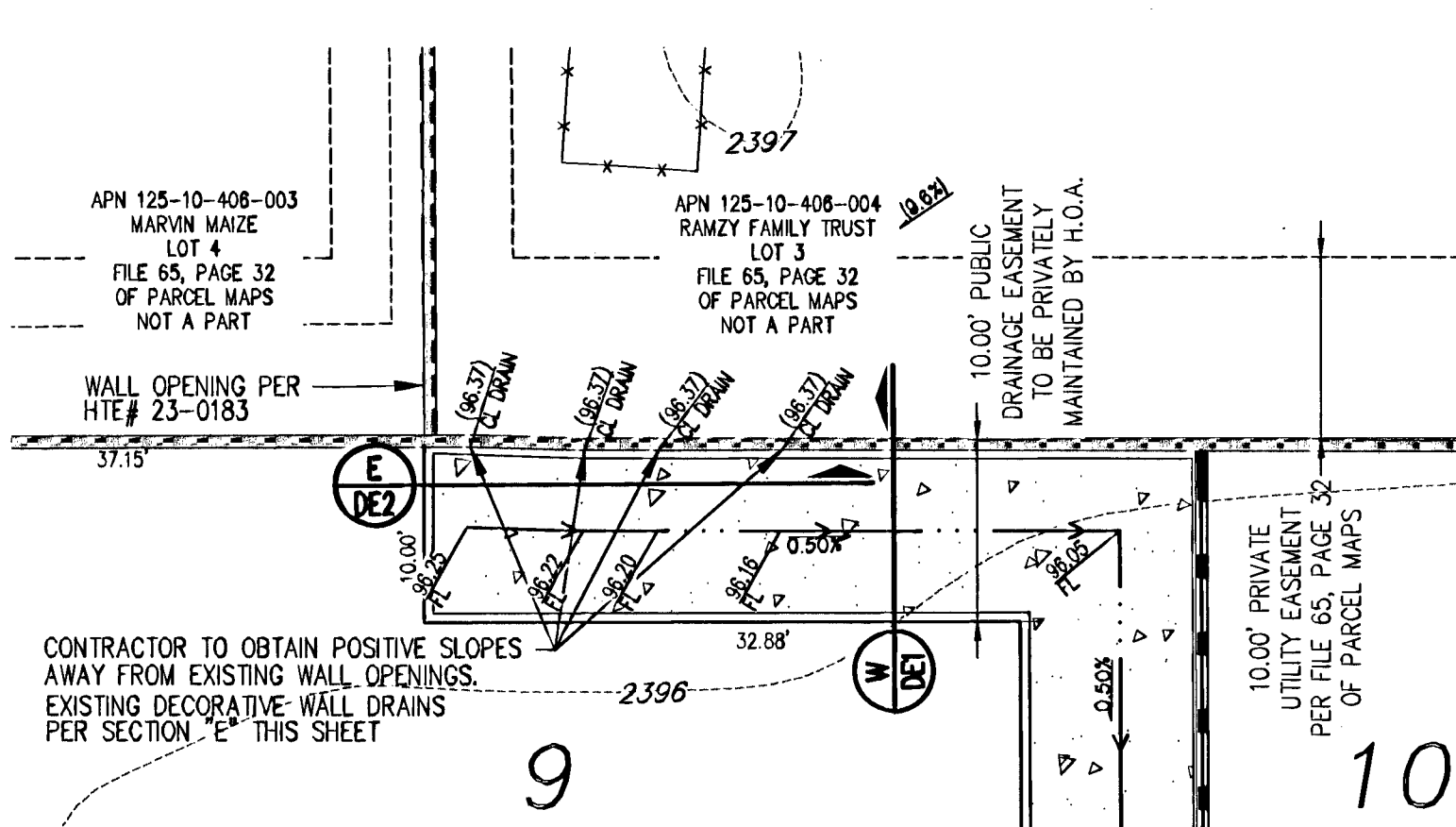
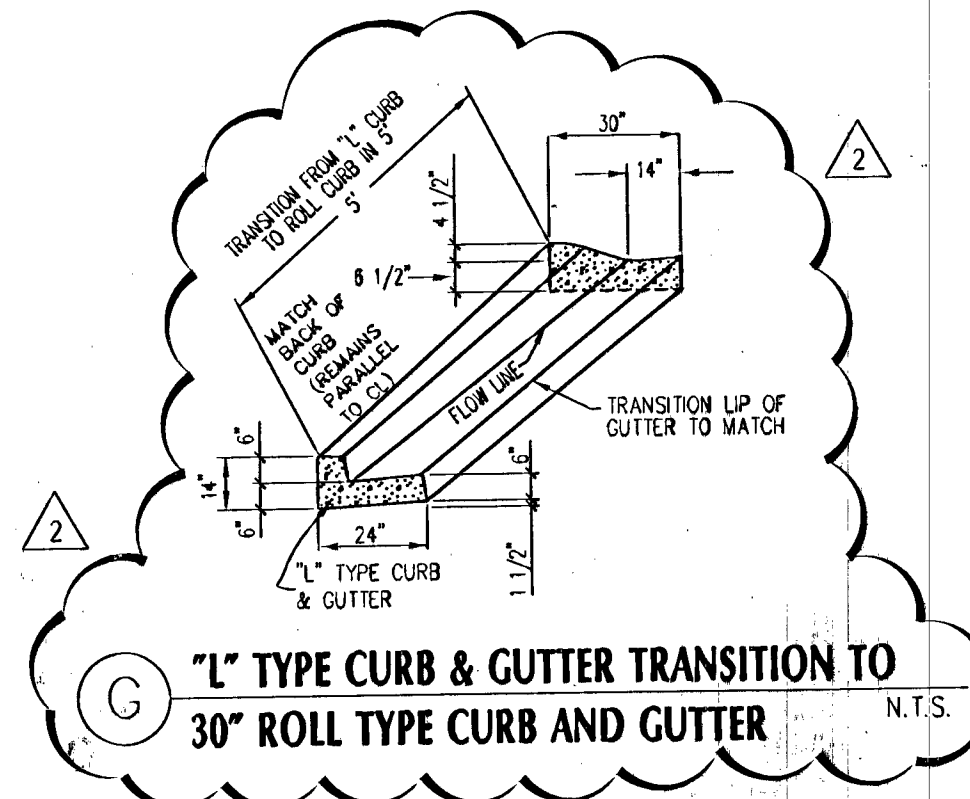
B EASEMENT SECTION
NOT TO SCALE



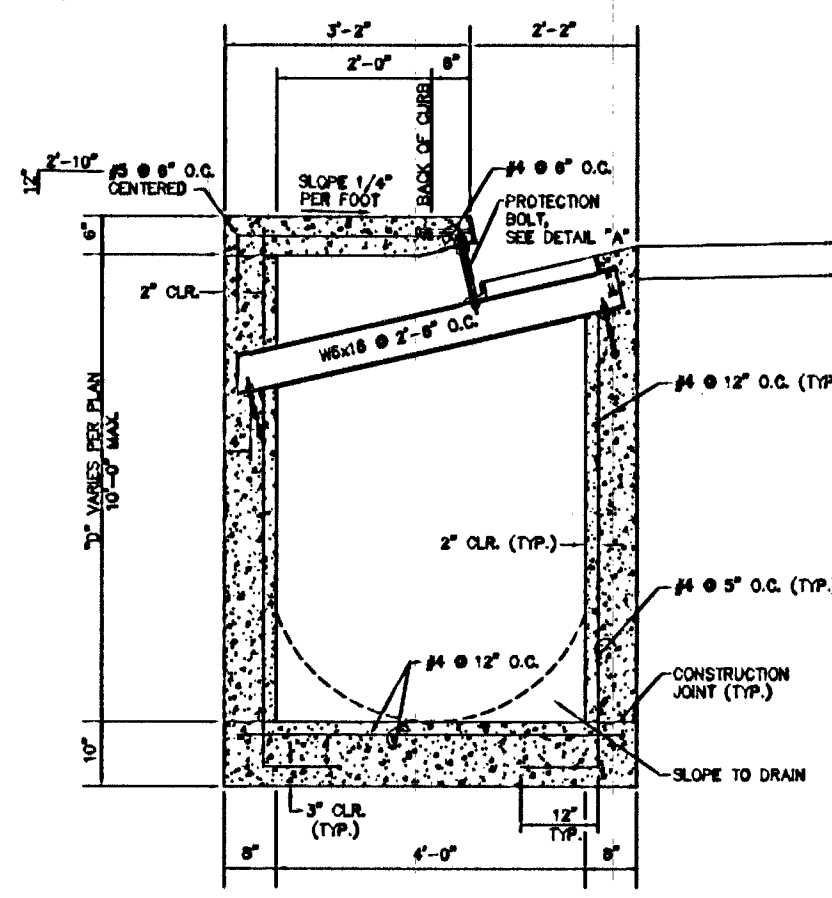
E EXISTING WALL DRAIN SECTION
NOT TO SCALE



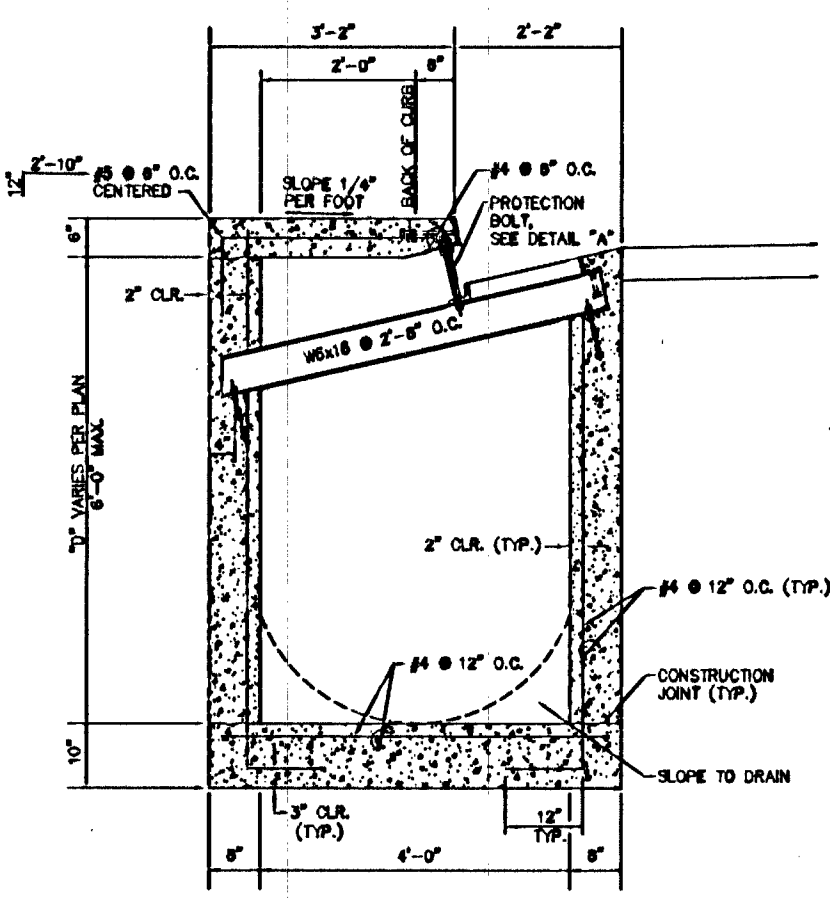
F 30' EASEMENT SECTION
NOT TO SCALE



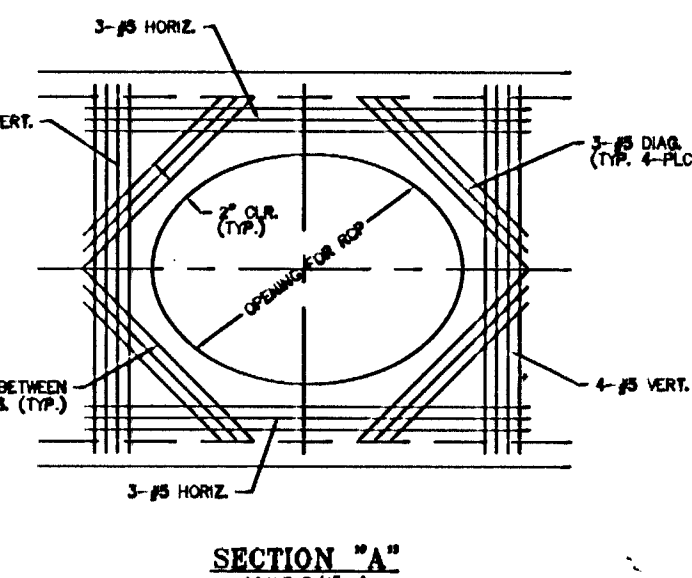
C DRAINAGE EASEMENT DETAIL
1"=10'



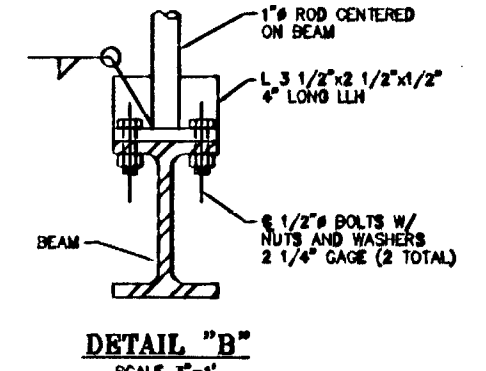
TYPE "CM" DROP INLET SECTION
(8" TO 10" DEEP)
SCALE 3/4"=1"



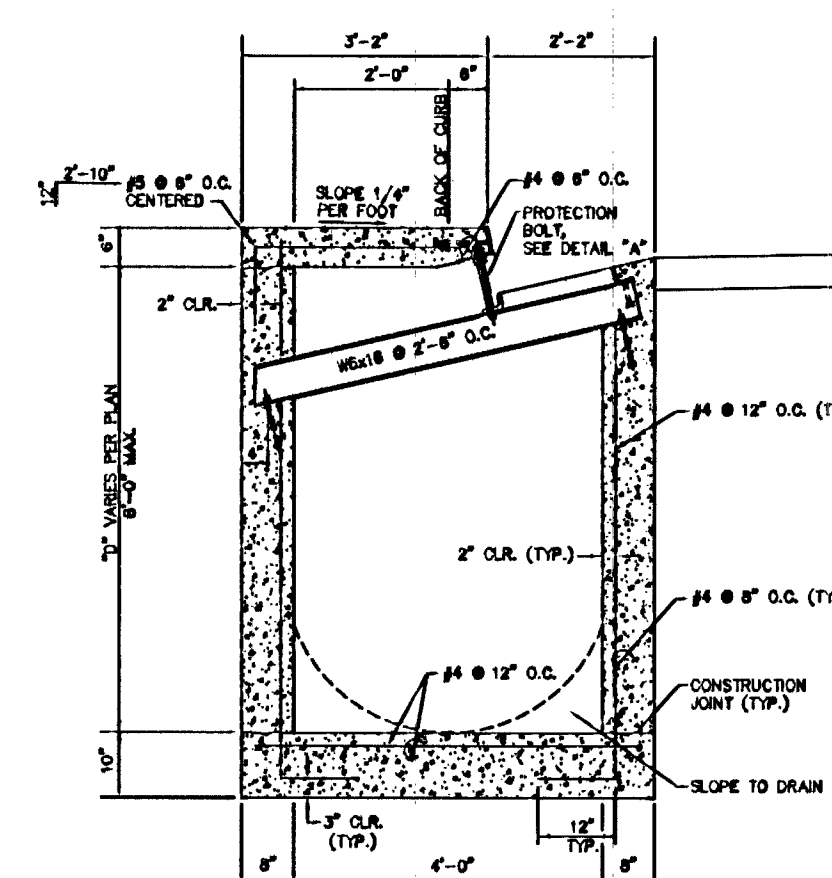
TYPE "CM" DROP INLET SECTION
(6" DEEP MAX.)
SCALE 3/4"=1"



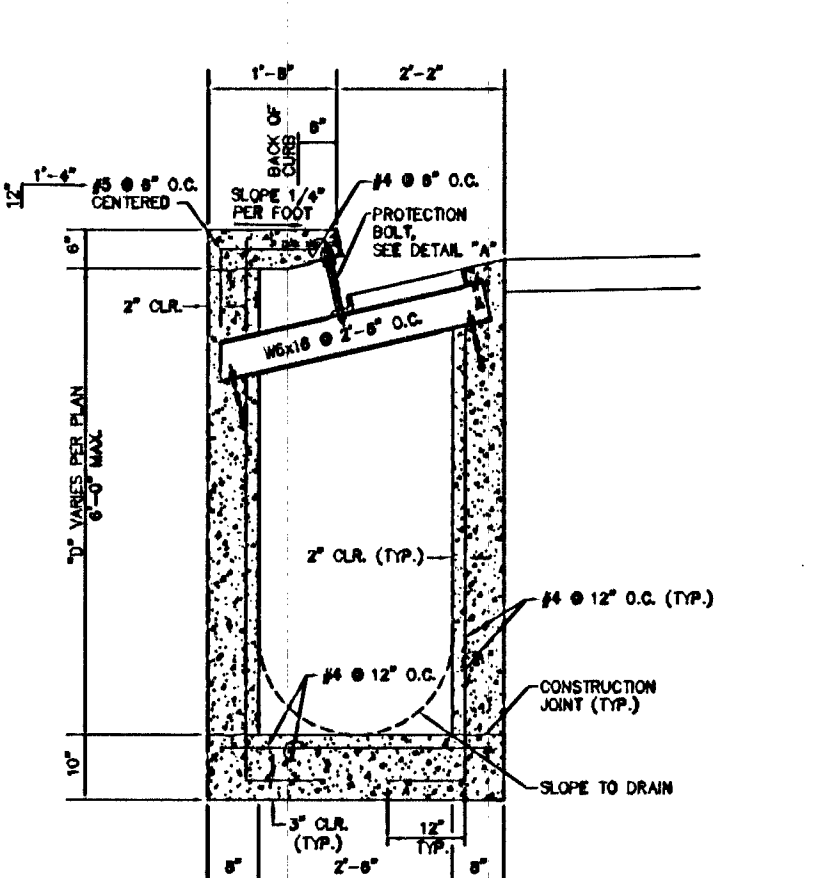
SECTION "A"
SCALE 3/4"=1"



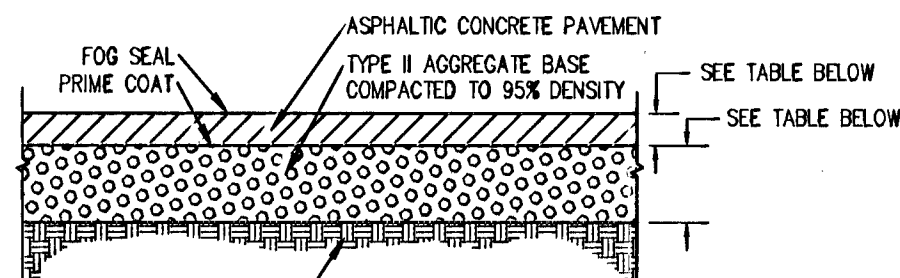
DETAIL "B"
SCALE 3/4"=1"



TYPE "CM" DROP INLET SECTION
(8" TO 8" DEEP)
SCALE 3/4"=1"

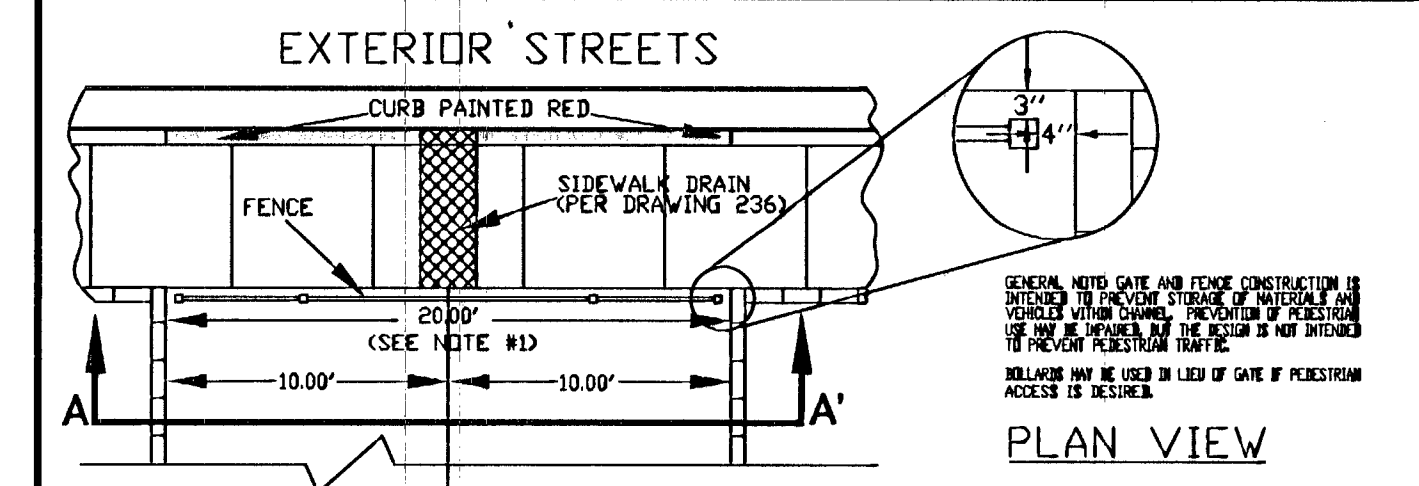


TYPE "DM" DROP INLET SECTION
(8" TO 8" DEEP)
SCALE 3/4"=1"

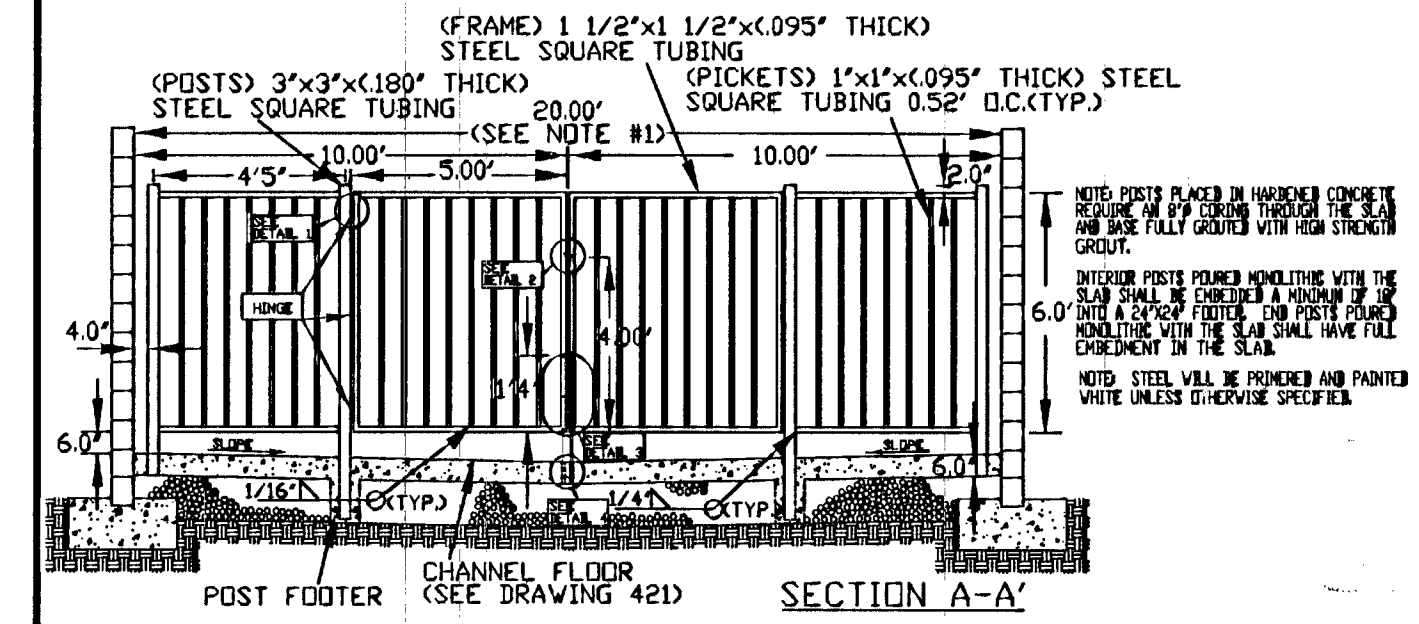


D PAVEMENT SECTION
NOT TO SCALE

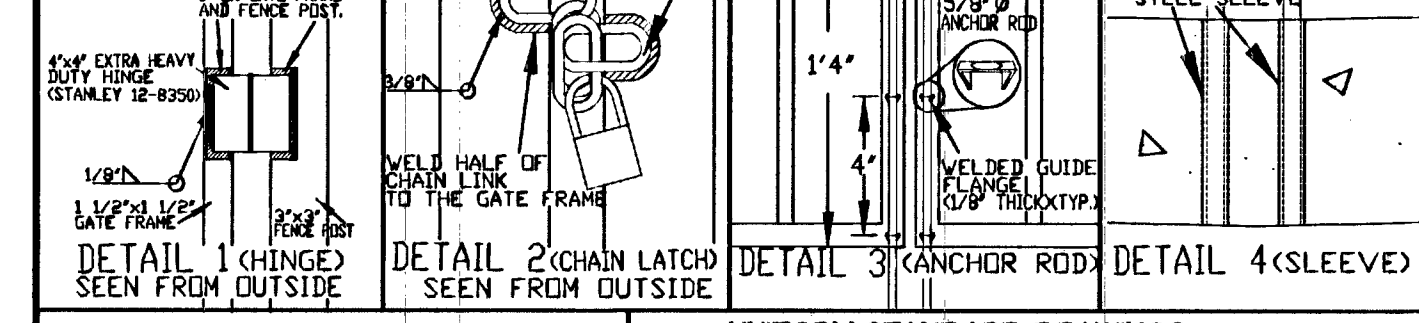
LOCATION	PAVEMENT	AGG. BASE
GATED ENTRY	2.5"	8"
ONSITE PRIVATE STREETS	2.5"	8"
GRAND TETON DRIVE	3.5"	8"
TIOGA WAY	3"	8"
PIONEER WAY	3"	8"



EXTERIOR STREETS
NOTE #1: 20" STANDARD WIDTH, DIFFERENT WIDTHS TO BE DESIGNED ACCORDINGLY.

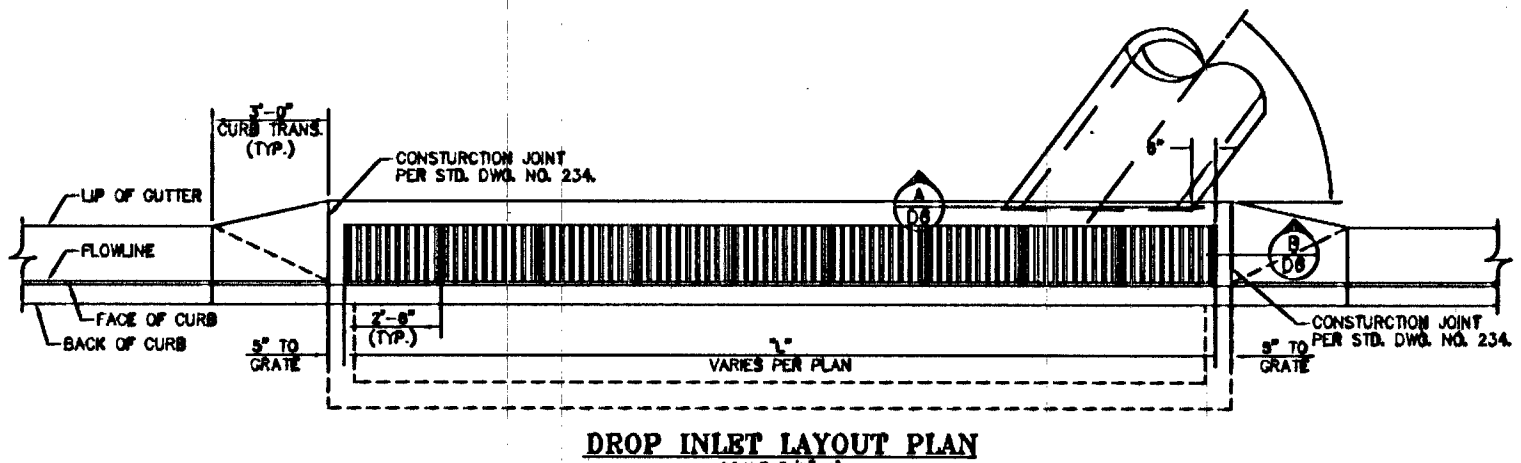


SECTION A-A

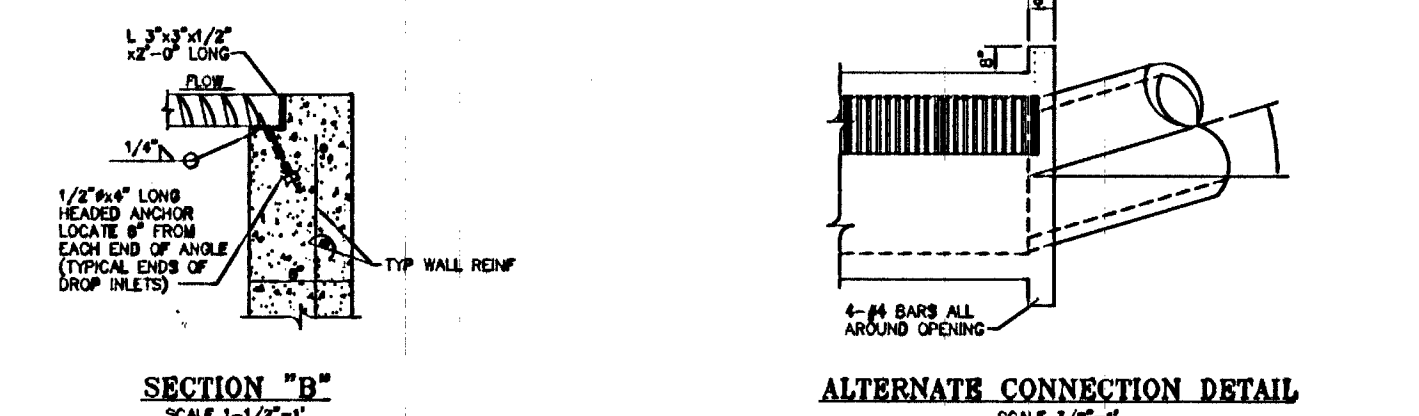


DETAIL 1 (CHAIN LATOP) SEEN FROM OUTSIDE
DETAIL 2 (ANCHOR ROD) SEEN FROM OUTSIDE
DETAIL 3 (ANCHOR ROD)
DETAIL 4 (SLEEVE)

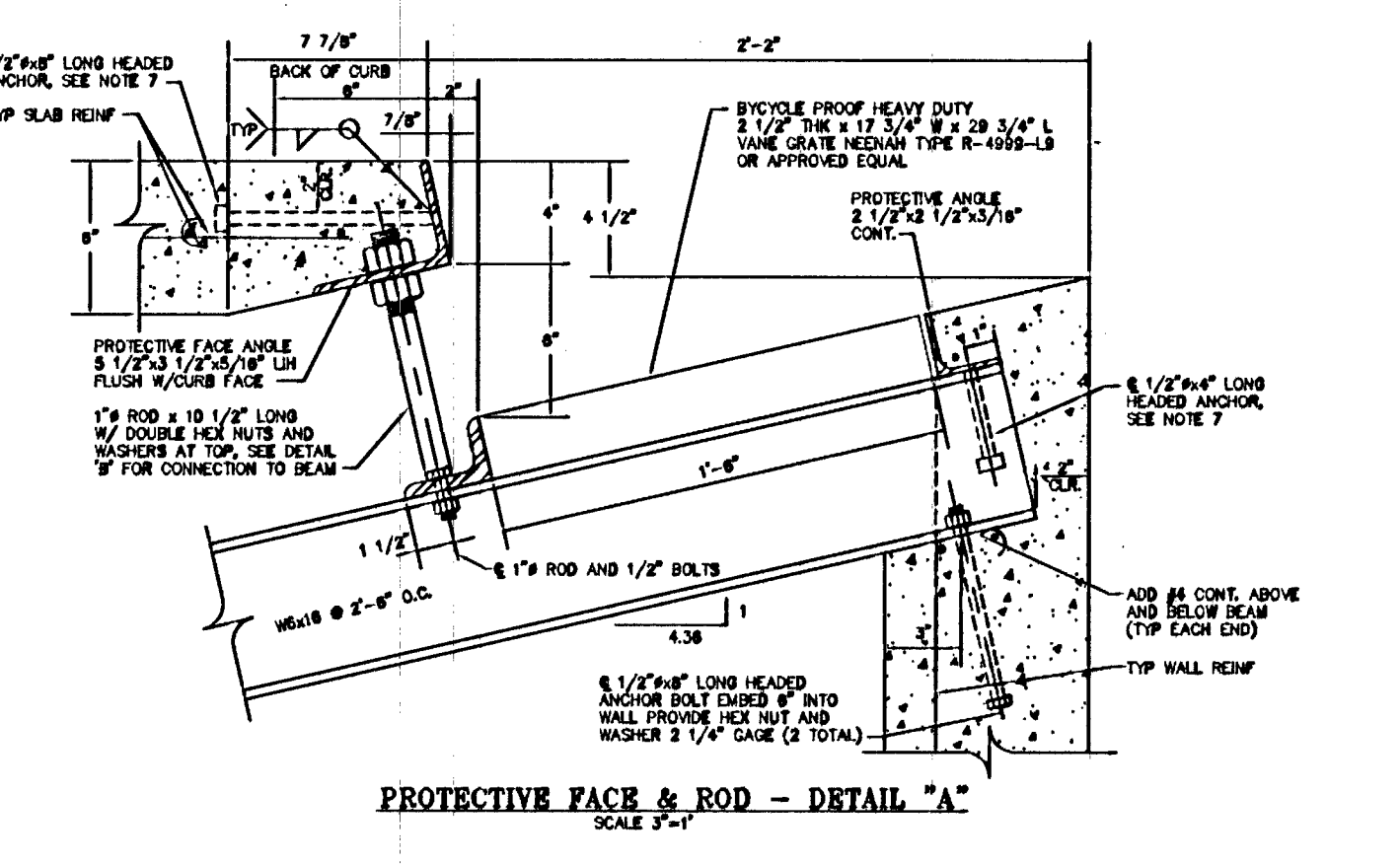
SPECIFICATION REFERENCE	UNIFORM STANDARD DRAWINGS CLARK COUNTY AREA
	CITY OF LAS VEGAS ONLY THRU-LOT DRAIN (DETAIL FOR FENCE) NOT FOR USE IN EMERGENCY ACCESS
DATE 03-07-04	DATE 03-07-04 DWG. NO. 421 B PAGE NO. 120 C



DROP INLET LAYOUT PLAN
SCALE 3/4"=1"



SECTION "B"
SCALE 1-1/2"=1"



PROTECTIVE FACE & ROD - DETAIL "A"
SCALE 3/4"=1"

- NOTES:**
- ALL COPPED METALS SHALL BE HOT DIP GALVANIZED AFTER FABRICATION.
 - PROVIDE 1/2" (MIN.) CLEARANCE ALL AROUND THE STEEL BEAM.
 - DRY PACK AFTER INSTALLATION.
 - WELDS REQUIRED BY LENGTH OF OPENING, PLATE ANGLE MAY BE DELIVERED IN SECTIONS AND BUTT WELDED IN PLACE.
 - ALL GALVANIZING DAMAGED BY WELDS SHALL RECEIVE TWO COATS OF GALVALLOY OR EQUAL.
 - CONCRETE SHALL BE MODIFIED CLASS DA, SEE SPECIAL PROVISIONS SECTION 501.
 - SEE GENERAL NOTES FOR STRUCTURES ON CURB DR.
 - ANGLE ANCHORS SHALL BE CHECKED IMPROVED IN EACH END AND EVENLY SPACED (MAXIMUM SPACING OF 2').

ADVANTAGE CIVIL DESIGN GROUP LLP
2920 N. GREEN VALLEY PKWY.
SUITE 415 • LAS VEGAS, NV 89104
OFFICE: 702.492.2204
FAX: 702.496.2204
EMAIL: INFO@ADVANTAGECIVIL-ANV.COM

STATE OF NEVADA
REGISTERED PROFESSIONAL CIVIL ENGINEER
NO. 20007

DETAIL SHEET 2
VERONA ESTATES
RICHMOND AMERICAN HOMES OF NV

REVISIONS

NO.	DATE	DESCRIPTION
1	3/7/07	ADD FENCE, DRIVEWAY, 30" ROLL CURB AND TRANSITION REMAINING BELLEGAARD AND BLOCK WALL.
2		
3		
4		
5		

JOB NUMBER: 63-001
DRAWN BY: MK
DESIGNED BY: BCD
CHECKED BY: JRM
DATE: 8/2014

PLOT DATE: 08-29-14 PLOT TIME: 08:18:44 DWG PATH: K:\Mechanical\Drawings\Mapa\Mapa\AS-001.dwg

CLV #54192 10743002

DE2 4 20