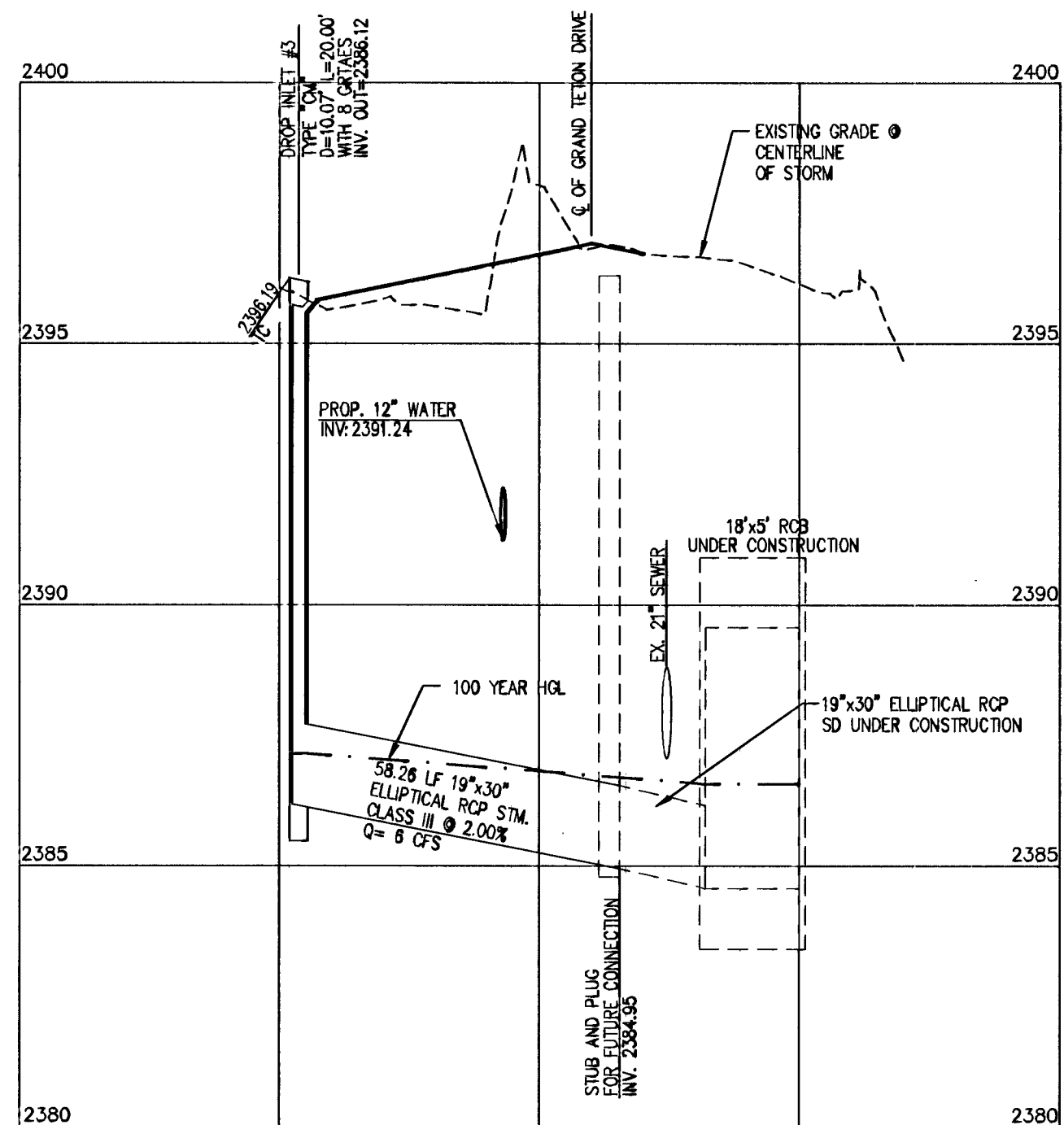
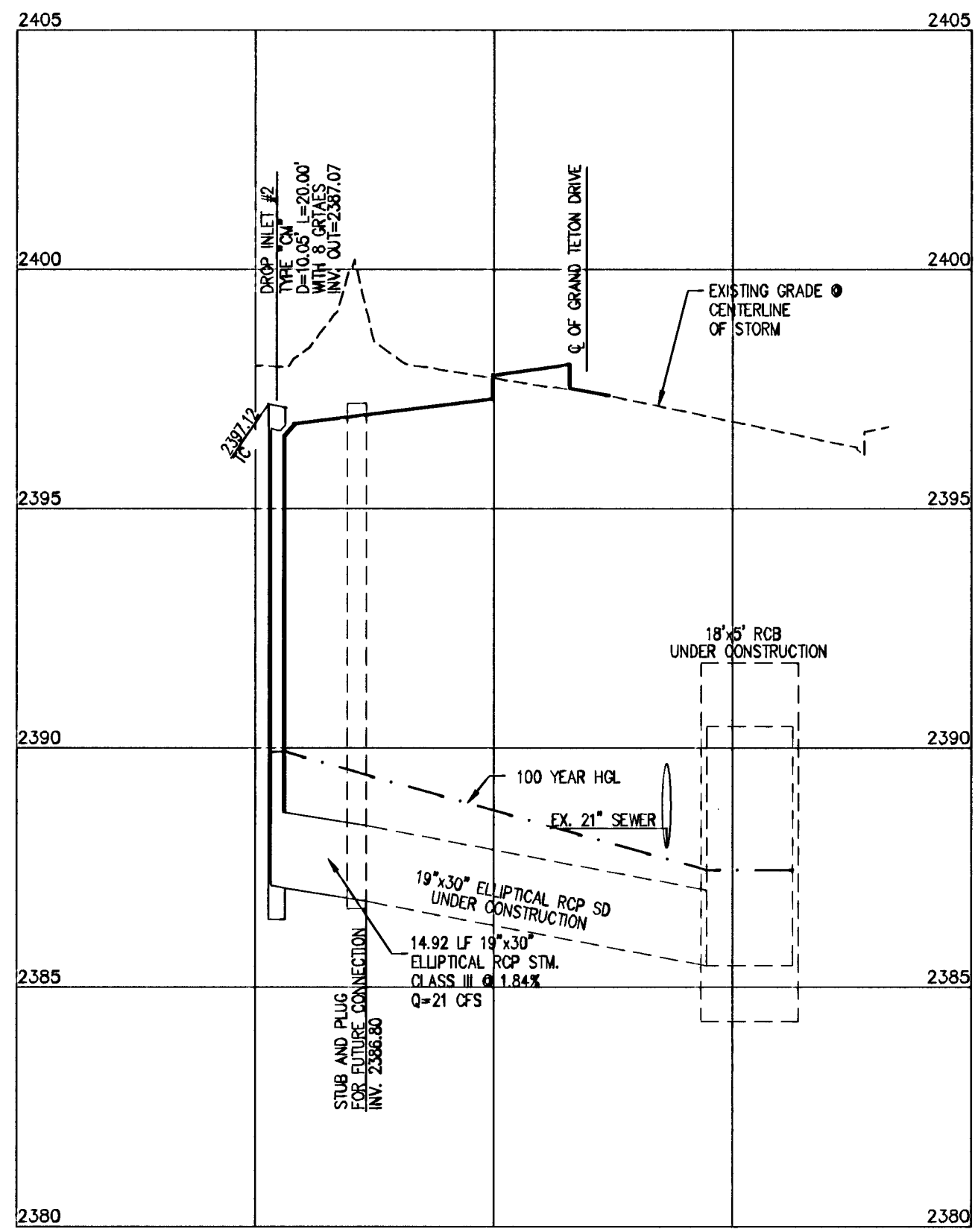


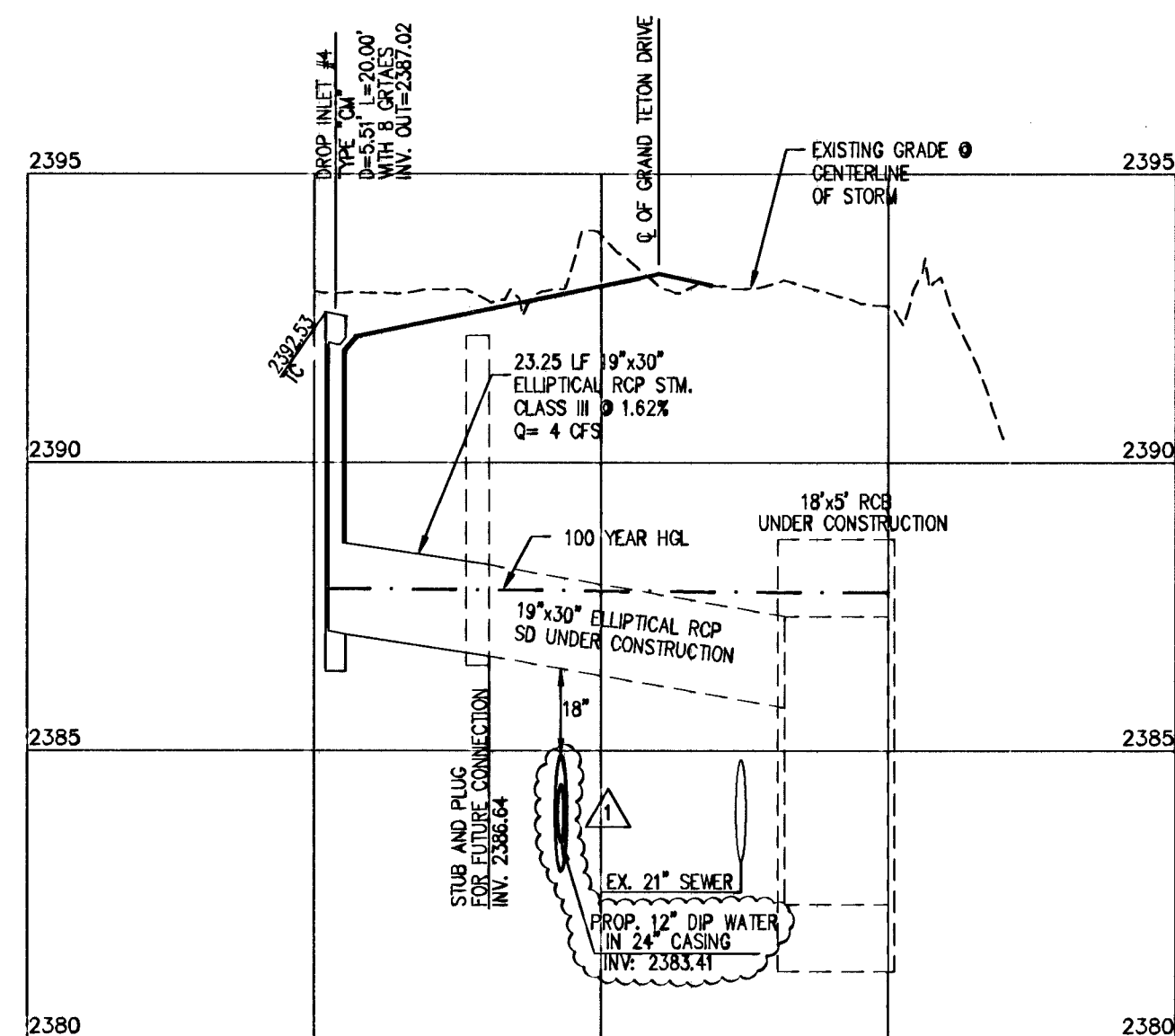
DROP INLET #1
HORIZONTAL: 1"=30'
VERTICAL: 1"=3'



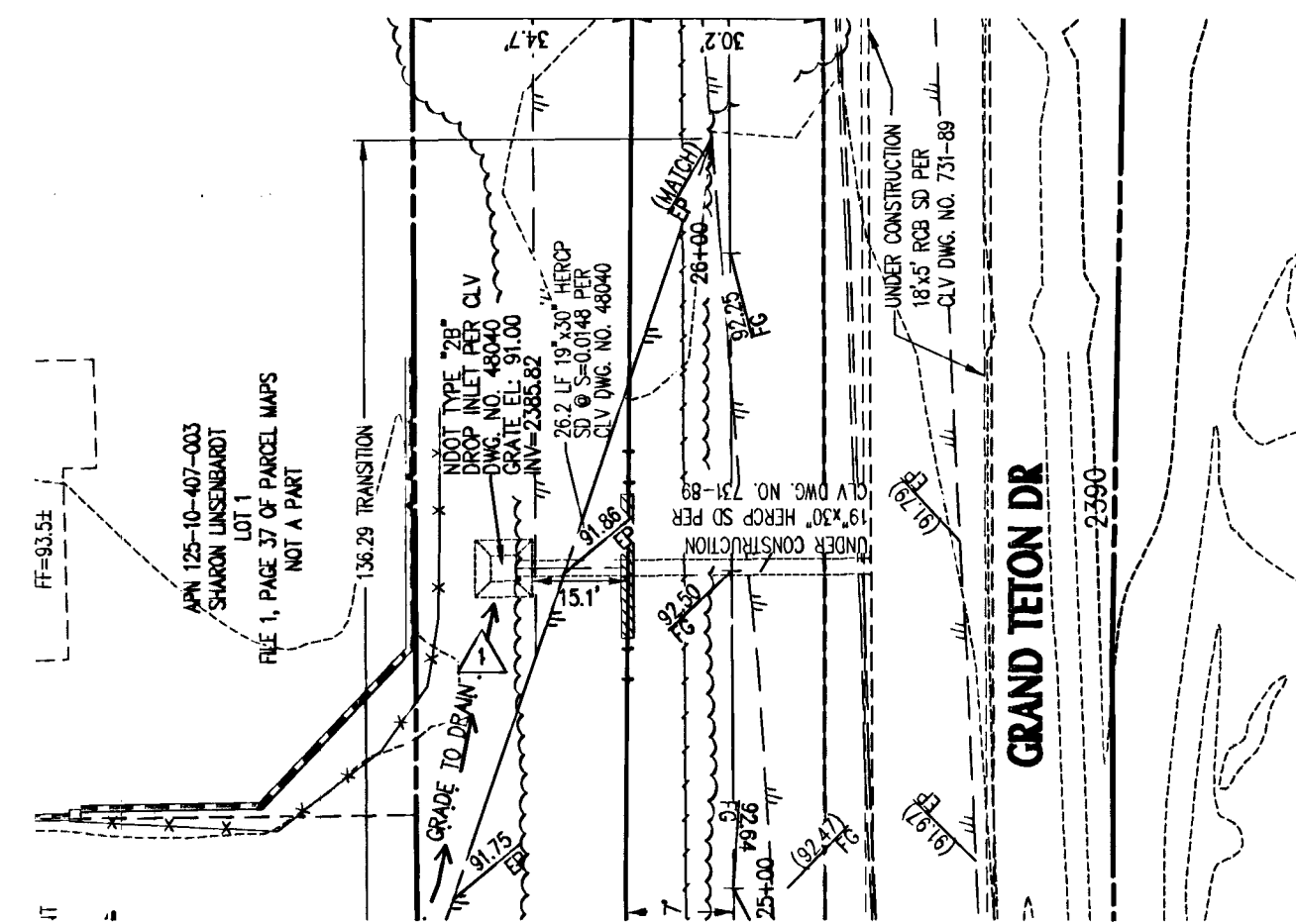
DROP INLET #3
HORIZONTAL: 1"=30'
VERTICAL: 1"=3'



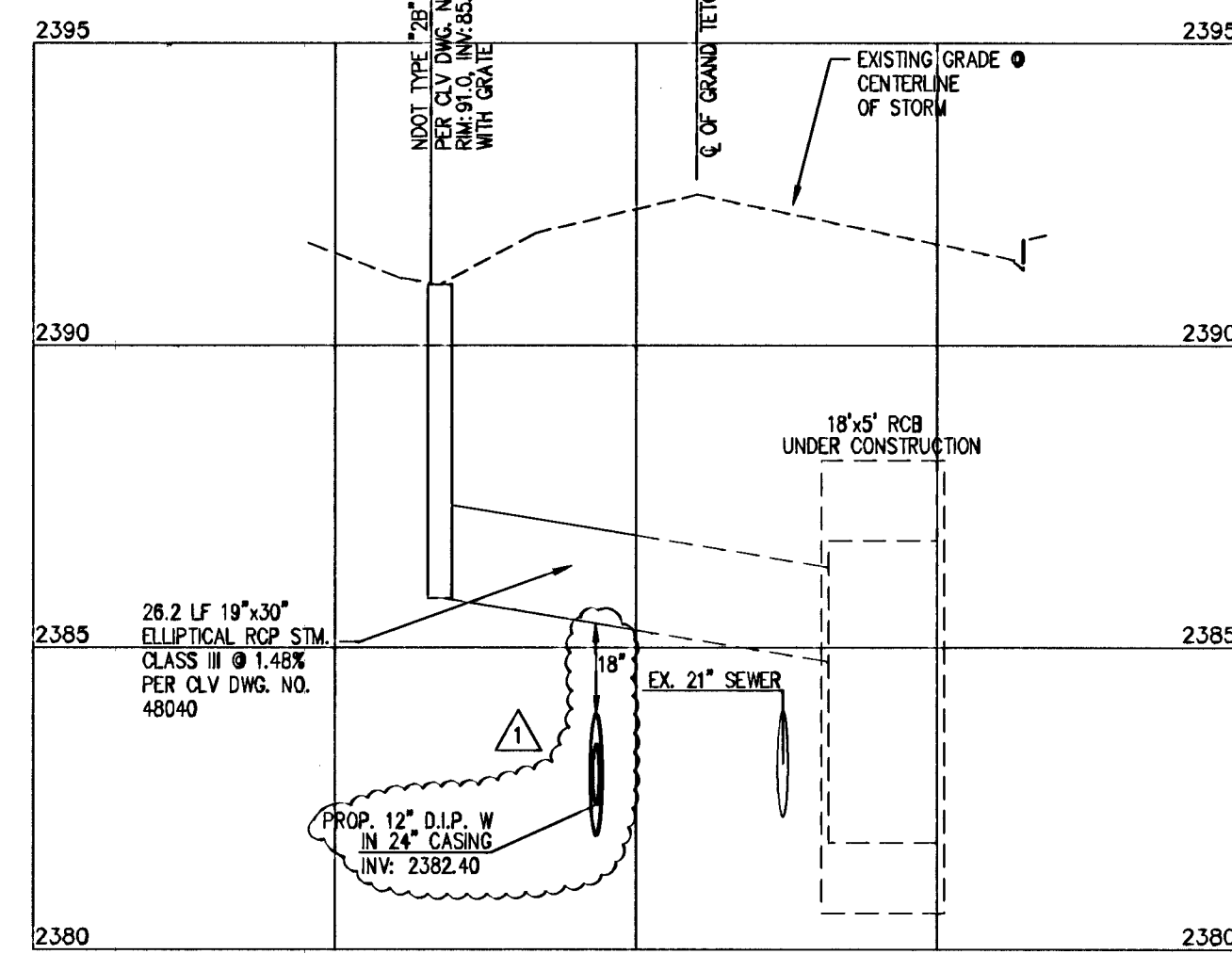
DROP INLET #2
HORIZONTAL: 1"=30'
VERTICAL: 1"=3'



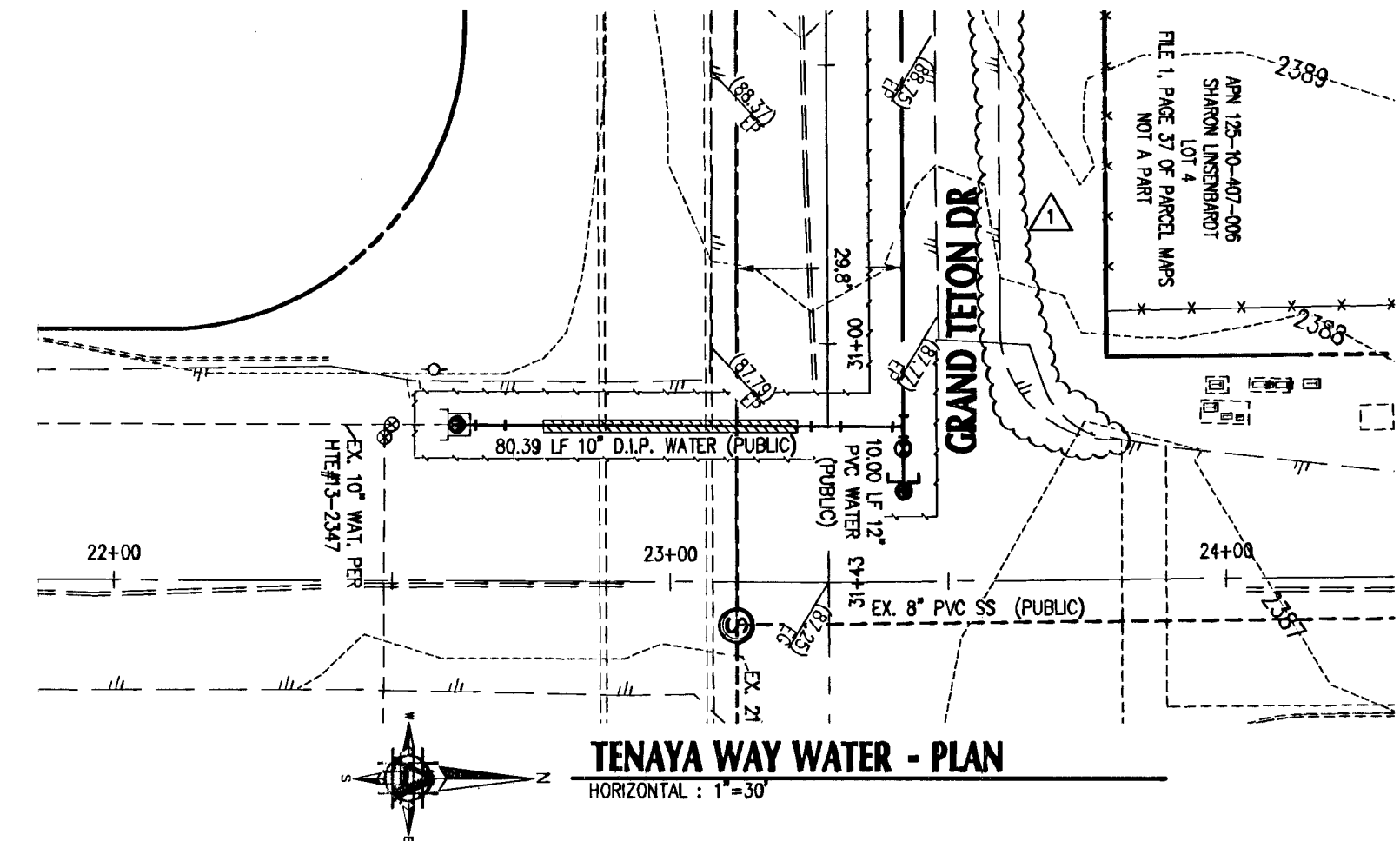
DROP INLET #4
HORIZONTAL: 1"=30'
VERTICAL: 1"=3'



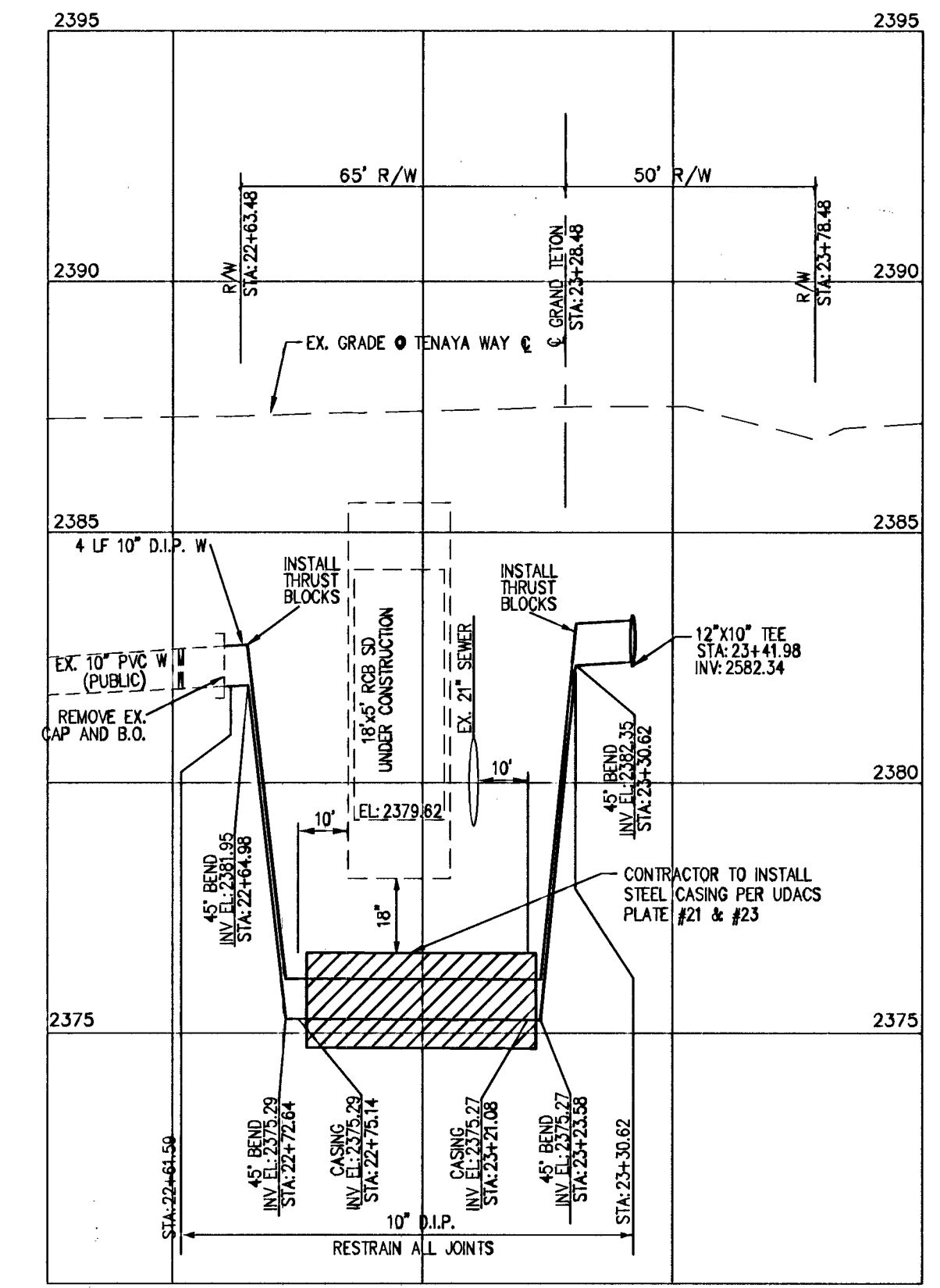
DROP INLET #5 - PLAN
HORIZONTAL: 1"=30'



DROP INLET #5 - PROFILE
HORIZONTAL: 1"=30'
VERTICAL: 1"=3'



TENAYA WAY WATER - PLAN
HORIZONTAL: 1"=30'



TENAYA WAY WATER PROFILE
HORIZONTAL: 1"=30'
VERTICAL: 1"=3'

BASIS OF BEARINGS
NORTH 84°40'02" EAST BEING THE BEARING OF THE SOUTH LINE OF THE SOUTHWEST QUARTER (SW 1/4) OF THE SOUTHWEST QUARTER (SW 1/4) OF SECTION 10, TOWNSHIP 19 SOUTH, RANGE 80 EAST, M.D.M., CLARK COUNTY, NEVADA, AS SHOWN ON THAT CERTAIN MAP ON FILE IN THE CLARK

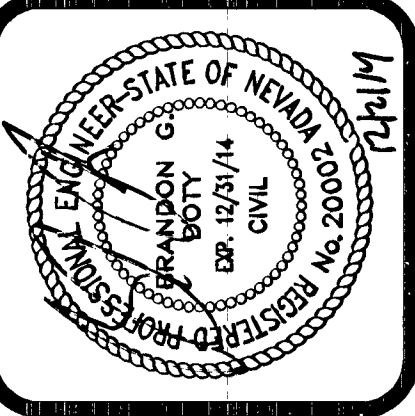
BENCHMARK
BENCHMARK STATION: BLV90 10SSW8
CITY OF LAS VEGAS RIVET AND PLATE IN CONCRETE CYLINDER, AT THE NORTHWEST CORNER OF GRAND TETON DRIVE AND PIONEER WAY.
ELEVATION=730.741 METERS (NAVD'88)
ELEVATION=2397.44 U.S. SURVEY FEET (NAVD-88)

APPROVED FOR CONSTRUCTION

DISHOR PERDI
LAS VEGAS VALLEY WATER DISTRICT ENGINEERING SERVICES MANAGER
PROJECT NO. 118987 DATE: 12/04/14
1st Approved 9/10/14 CLV #54192 10745002

ADVANTAGE CIVIL DESIGN GROUP, LLP
29720 N. GREEN VALLEY PKWY.,
SUITE 450, LAS VEGAS, NV 89144
OFFICE: 702.446.2294
FAX: 702.446.2294
EMAIL: NVAL@ADVANTAGECIVIL-LLP.COM

PLANNING
CONSULTING
ENGINEERING



MISCELLANEOUS PROFILES
VERONA ESTATES
RICHMOND AMERICAN HOMES OF NV

NO.	DATE	REVISIONS
1	12/14	REVISION DESCRIBED PER PLAN PROPOSED ASPHALT TO GRAND TETON, REMOVED 45' BENDS, AND REPAVED WATER UNDER PROPOSED PAVEMENT, ADDED SOUTHWEST GAS PLANS

JOB NUMBER: 63-001
DRAWN BY: MK
DESIGNED BY: BGD
CHECKED BY: JRM
DATE: 8/2014

PP10 18 20