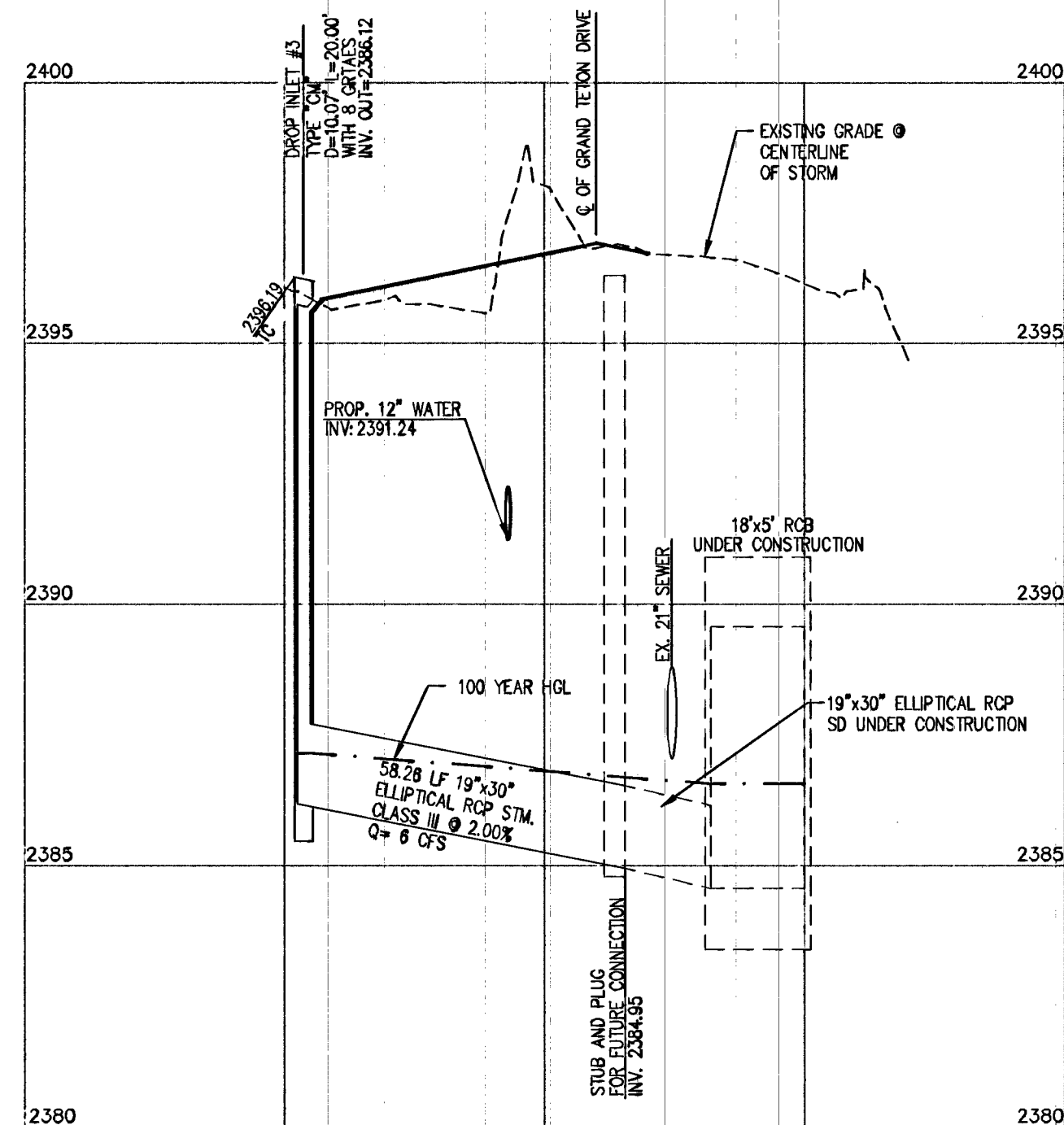
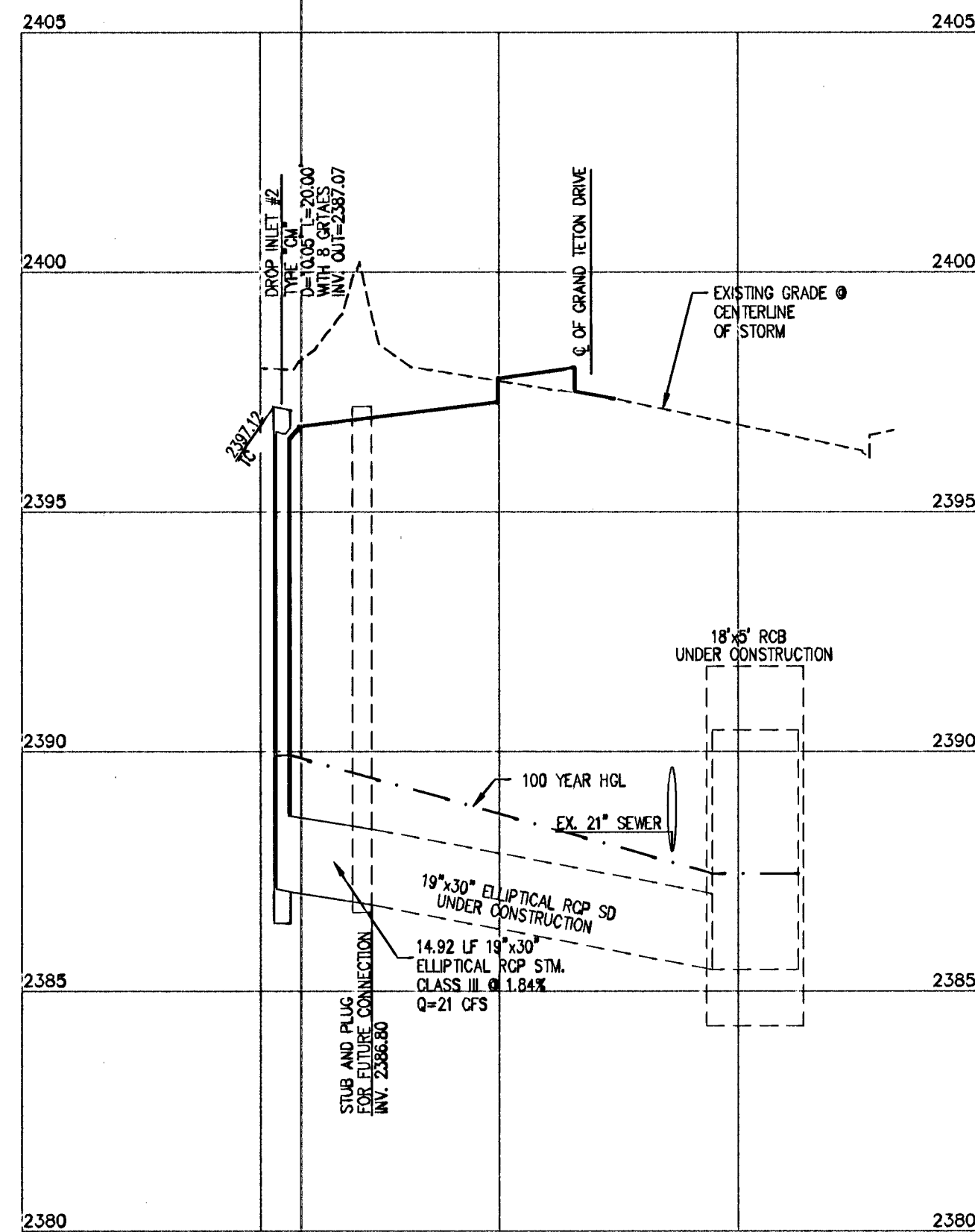


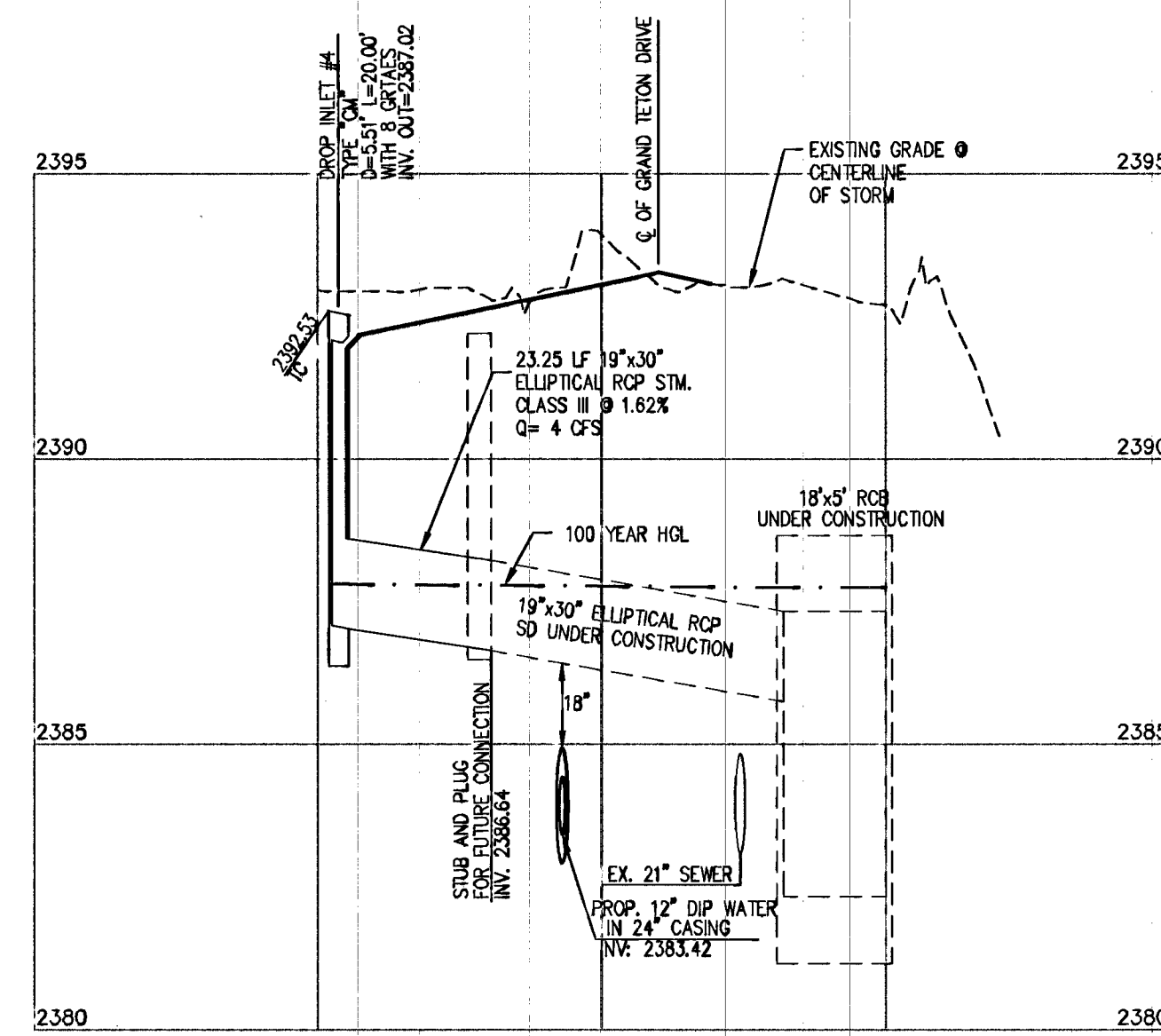
**DROP INLET #1**  
HORIZONTAL: 1"=30'  
VERTICAL: 1"=3'



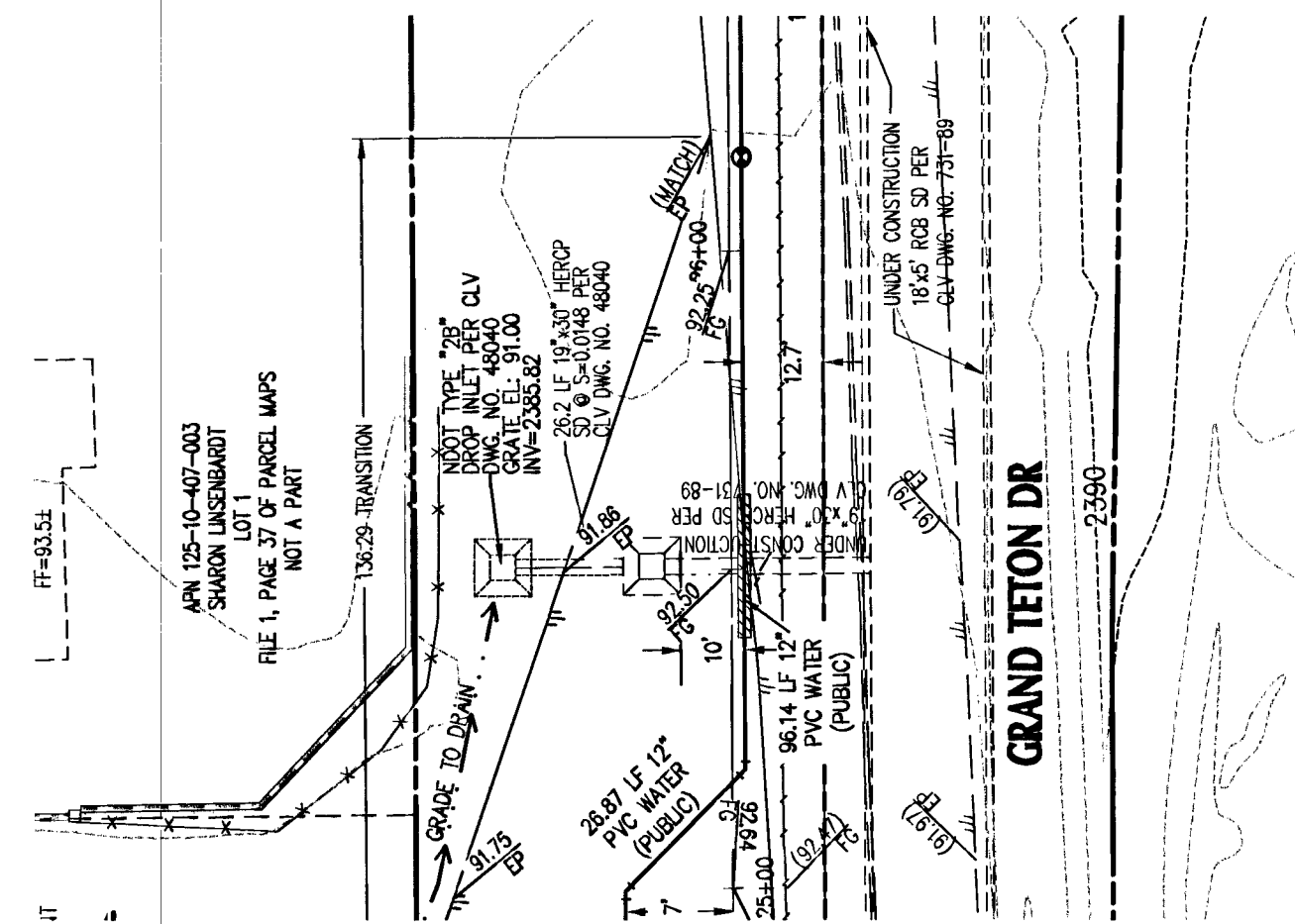
**DROP INLET #3**  
HORIZONTAL: 1"=30'  
VERTICAL: 1"=3'



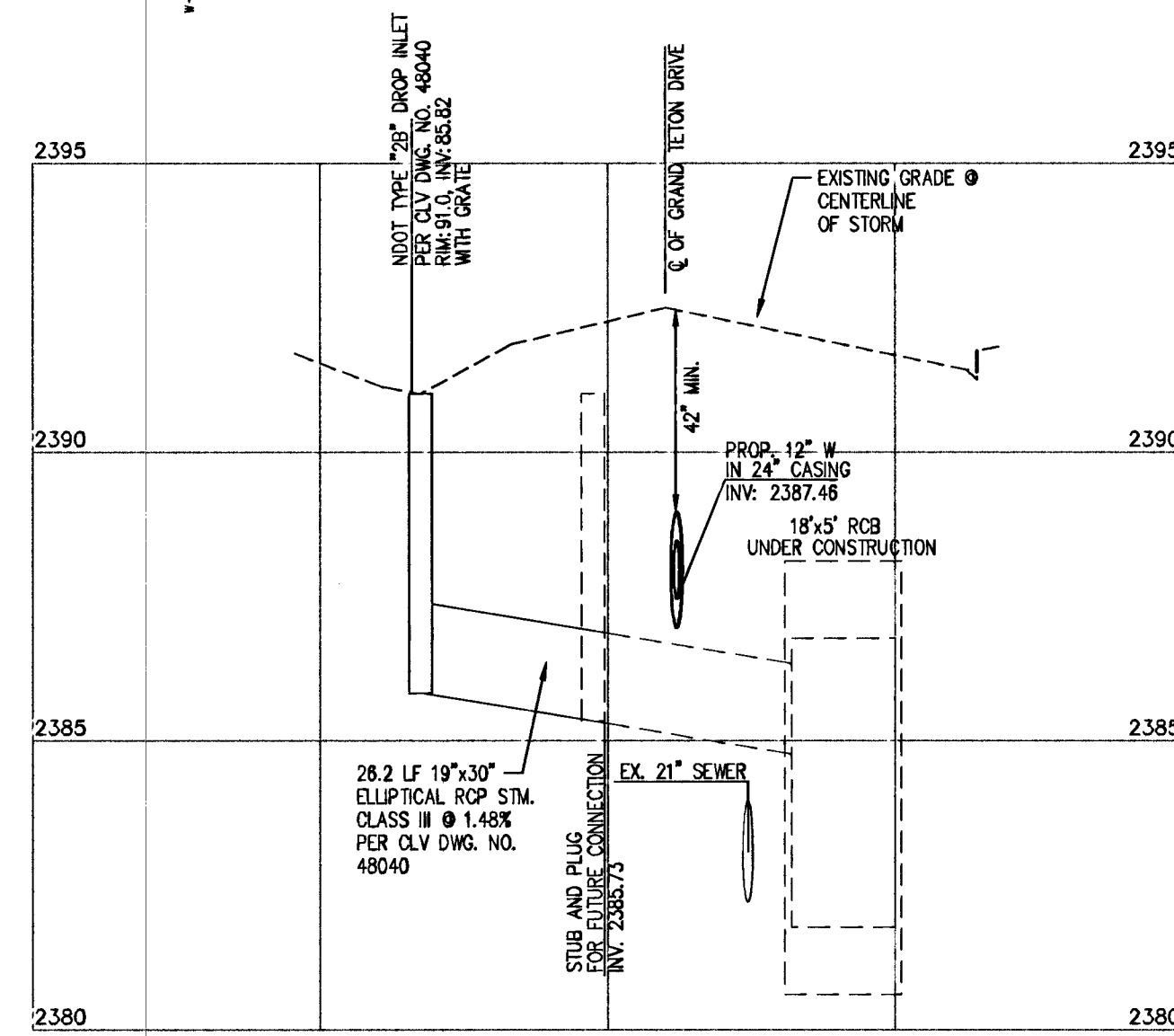
**DROP INLET #2**  
HORIZONTAL: 1"=30'  
VERTICAL: 1"=3'



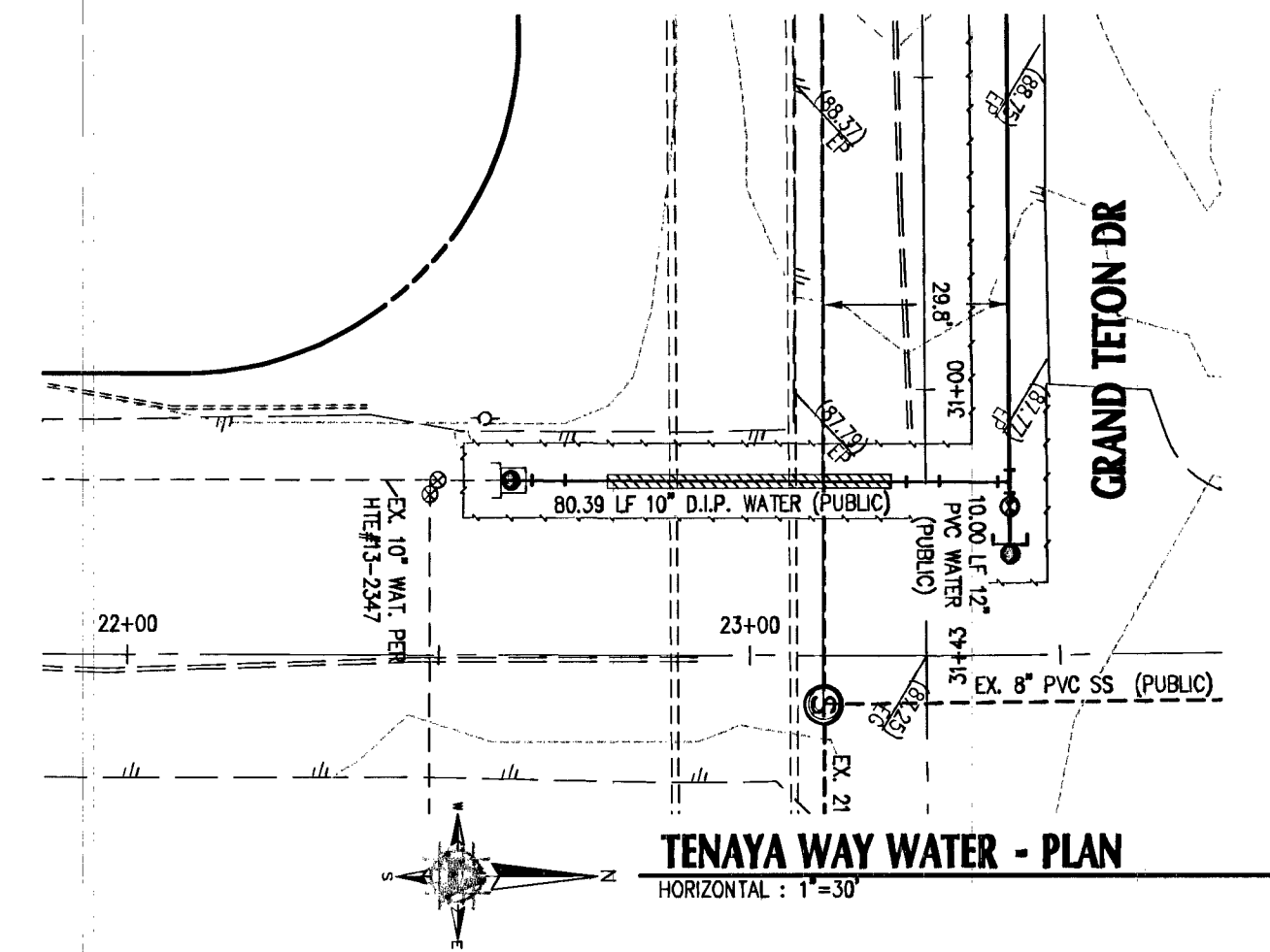
**DROP INLET #4**  
HORIZONTAL: 1"=30'  
VERTICAL: 1"=3'



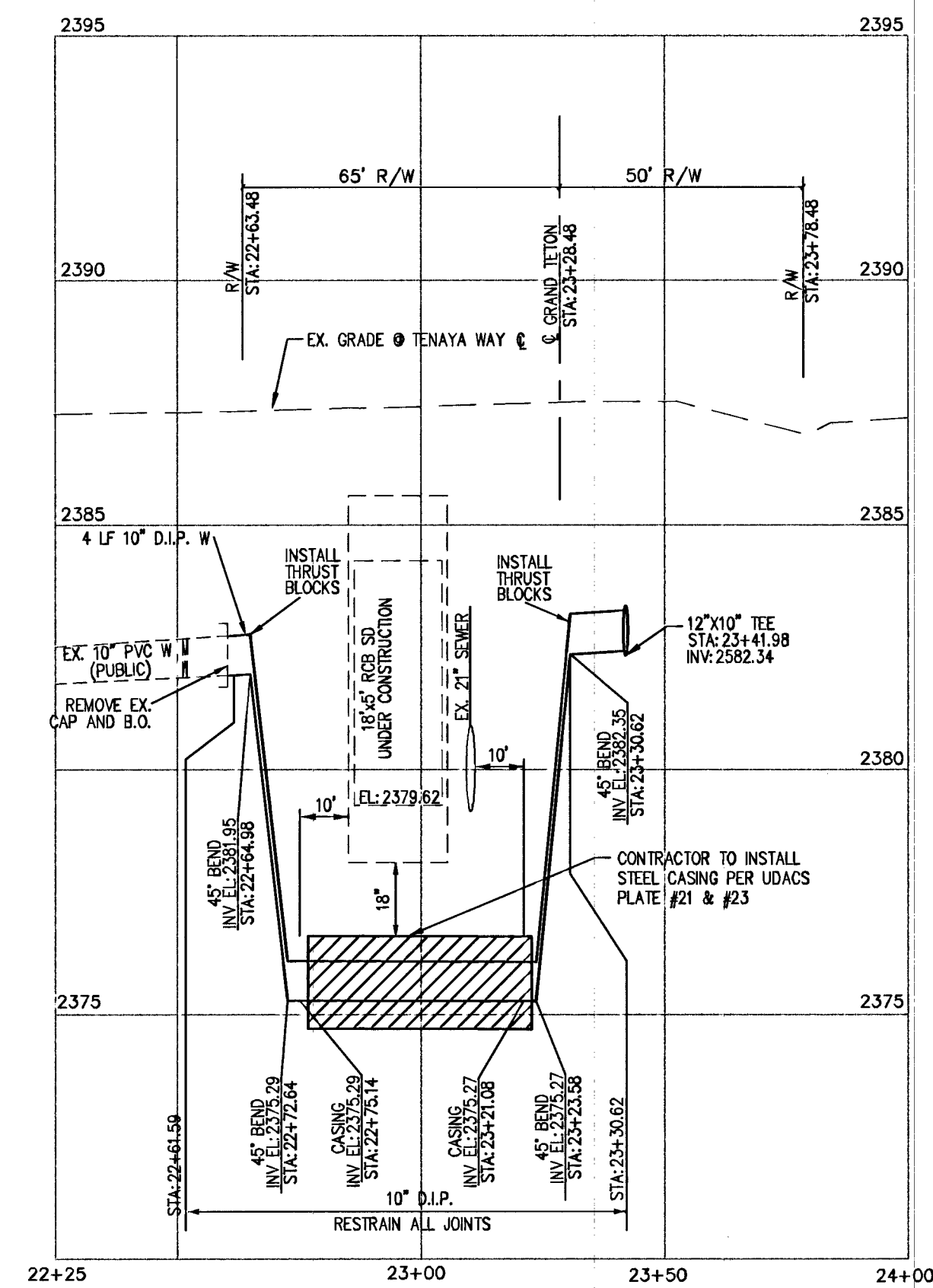
**DROP INLET #5 - PLAN**  
HORIZONTAL: 1"=30'



**DROP INLET #5 - PROFILE**  
HORIZONTAL: 1"=30'  
VERTICAL: 1"=3'



**TENAYA WAY WATER - PLAN**  
HORIZONTAL: 1"=30'



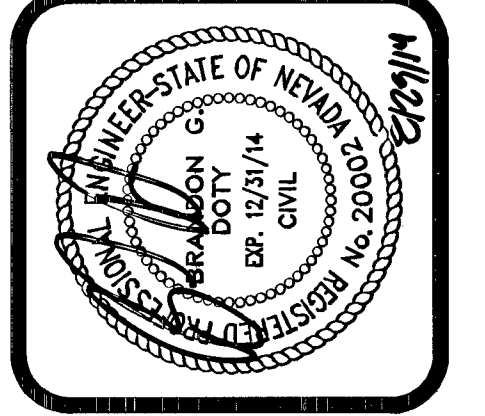
**TENAYA WAY WATER PROFILE**  
HORIZONTAL: 1"=30'  
VERTICAL: 1"=3'

**BASIS OF BEARINGS**  
NORTH 84°42'02" EAST BEING THE BEARING OF THE SOUTH LINE OF THE SOUTHWEST QUARTER (SW 1/4) OF THE SOUTHWEST QUARTER (SW 1/4) OF SECTION 10, TOWNSHIP 19 SOUTH, RANGE 80 EAST, M.D.M., CLARK COUNTY, NEVADA, AS SHOWN ON THAT CERTAIN MAP ON FILE IN THE CLARK

**BENCHMARK**  
BENCHMARK STATION: 8L900 10SS18  
CITY OF LAS VEGAS RIVET AND PLATE IN CONCRETE CYLINDER, AT THE NORTHWEST CORNER OF GRAND TETON DRIVE AND PIONEER WAY.  
ELEVATION=730.741 METERS (NAVD'88)  
ELEVATION=2397.44 U.S. SURVEY FEET (NAVD-88)

**APPROVED FOR CONSTRUCTION**  
*1. Dishar For Dsm*  
LAS VEGAS VALLEY WATER DISTRICT ENGINEERING SERVICES MANAGER  
PROJECT NO. 118967 DATE: 8/10/14

**ADVANTAGE CIVIL DESIGN GROUP, LLP**  
2920 N. GREEN VALLEY PKWY.,  
BLDG. 4 STE. #422  
HENDERSON, NEVADA 89014  
OFFICE: 702.492.2244  
FAX: 702.496.2244  
EMAIL: MAIL@ADVANTAGECIVIL-AM.COM  
CONSULTING  
CIVIL ENGINEERING  
PLANNING



**MISCELLANEOUS PROFILES**  
**VERONA ESTATES**  
**RICHMOND AMERICAN HOMES OF NV**

NO.	DATE	REVISIONS DESCRIPTION	BY

JOB NUMBER: 63-001  
DRAWN BY: MK  
DESIGNED BY: BGD  
CHECKED BY: JRM  
DATE: 8/2014

CLV #54192 1075002