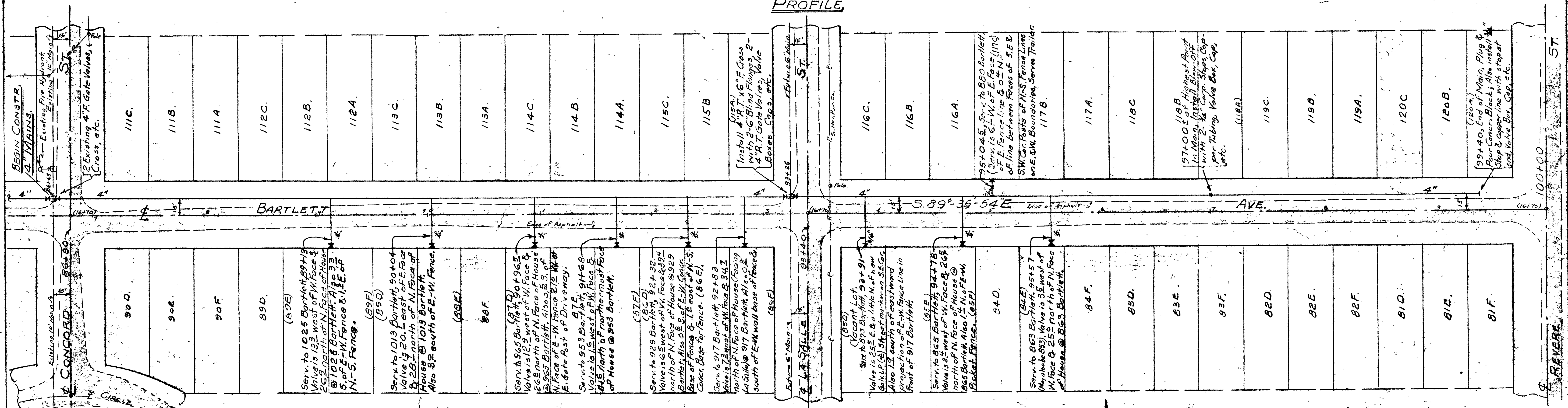
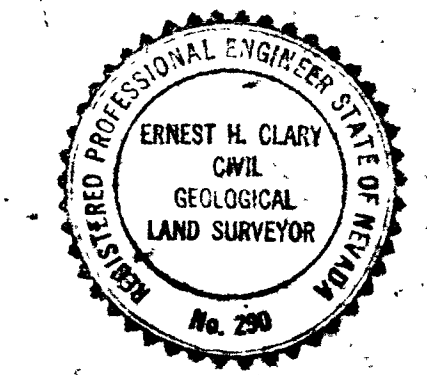


PROFILE



PLAN

Handwritten calculations:
 $\frac{89.104}{91}$
 $\frac{78.75}{115}$
 $\frac{23.3}{115}$



VEGAS HEIGHTS WATER & SANITATION DISTRICT,
 1024 WEST BALZAR AVE., LAS VEGAS, NEVADA.
WATER SUPPLY SYSTEM-WATER MAINS ON
BARTLETT AVE.-CONCORD ST. TO REVERE ST.
PLAN & PROFILE.

Prepared by Ernest H. Clary, P.E.,
 Reg. Prof. Civil Engineer and Land
 Surveyor - No. 290 - Nevada.
 1210 Western St.,
 Las Vegas, Nevada.

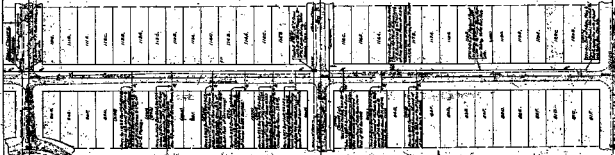
Scale: Hor.: One Inch = 40 Feet
 Vert.: One Inch = 2 Feet
 Datum: City of Las Vegas, Nev. Elevation.
 Date: May 18, 1962.

Sheet 1B of Sheets 24 Drawing No. 62-32.

308-16
 5677-3190



EXHIBIT



Special Agents' Office & Reception Center
Federal Bureau of Investigation
United States Department of Justice
Washington, D.C. 20535
Telephone: (202) 452-4000
Fax: (202) 452-4001
Internet: www.fbi.gov