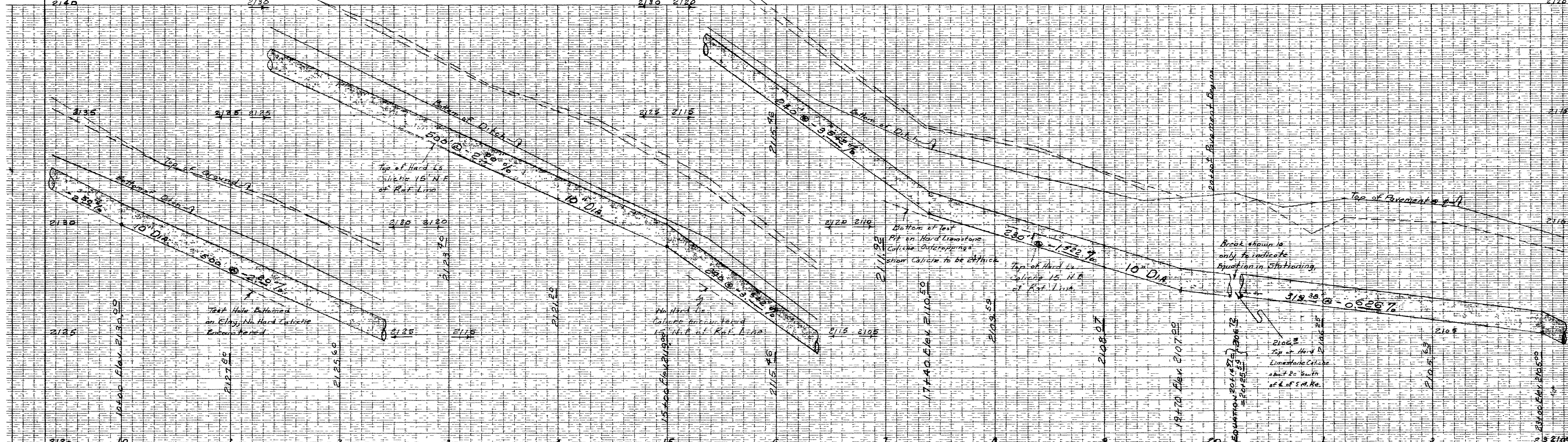


MADE IN U.S.A.
BY THE WPA

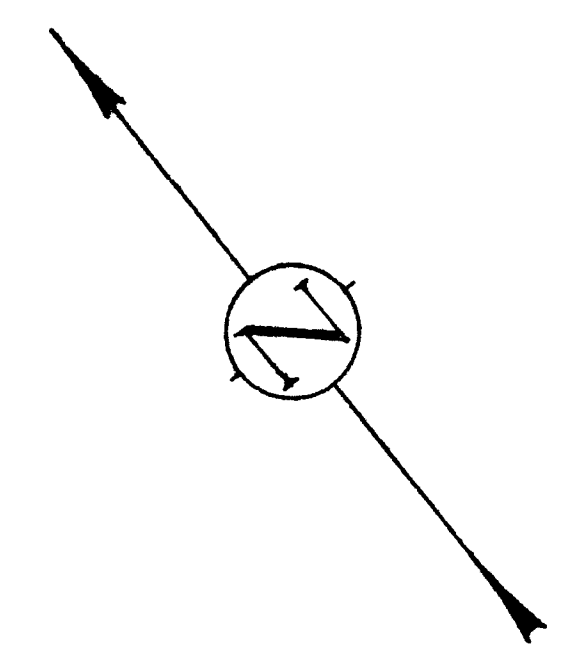
MADE IN U.S.A.
BY THE WPA

MADE IN U.S.A.
BY THE WPA

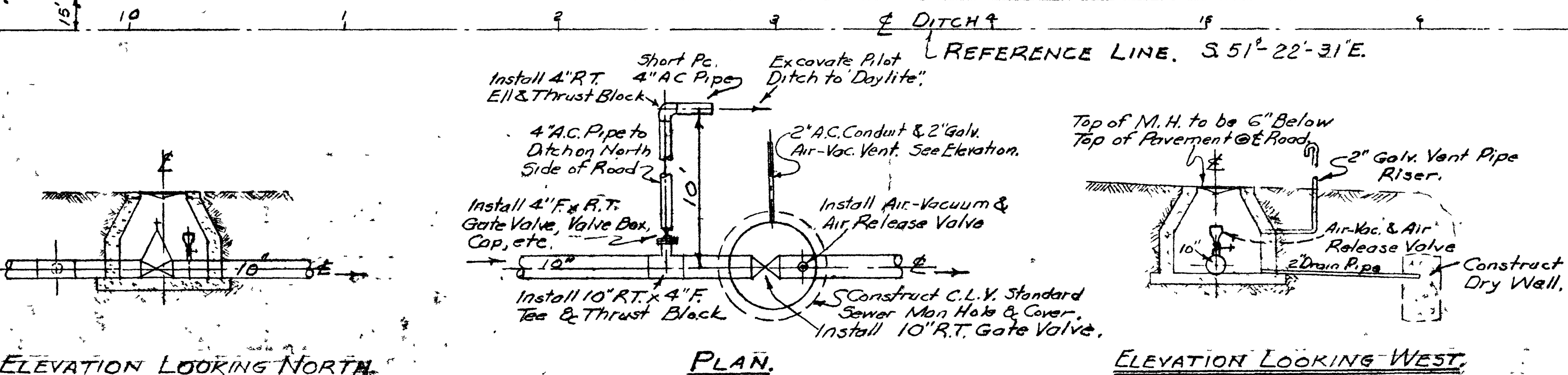


PROFILE.

VEGAS HTS. WATER & SAN. DISTR.
40-ACRE PARCEL.



Continued from Sheet 4.



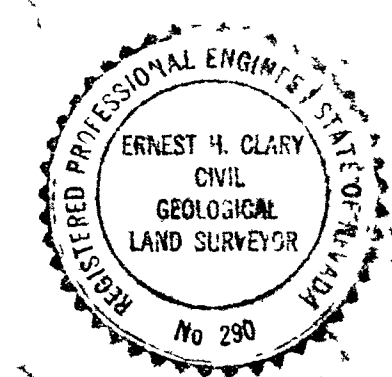
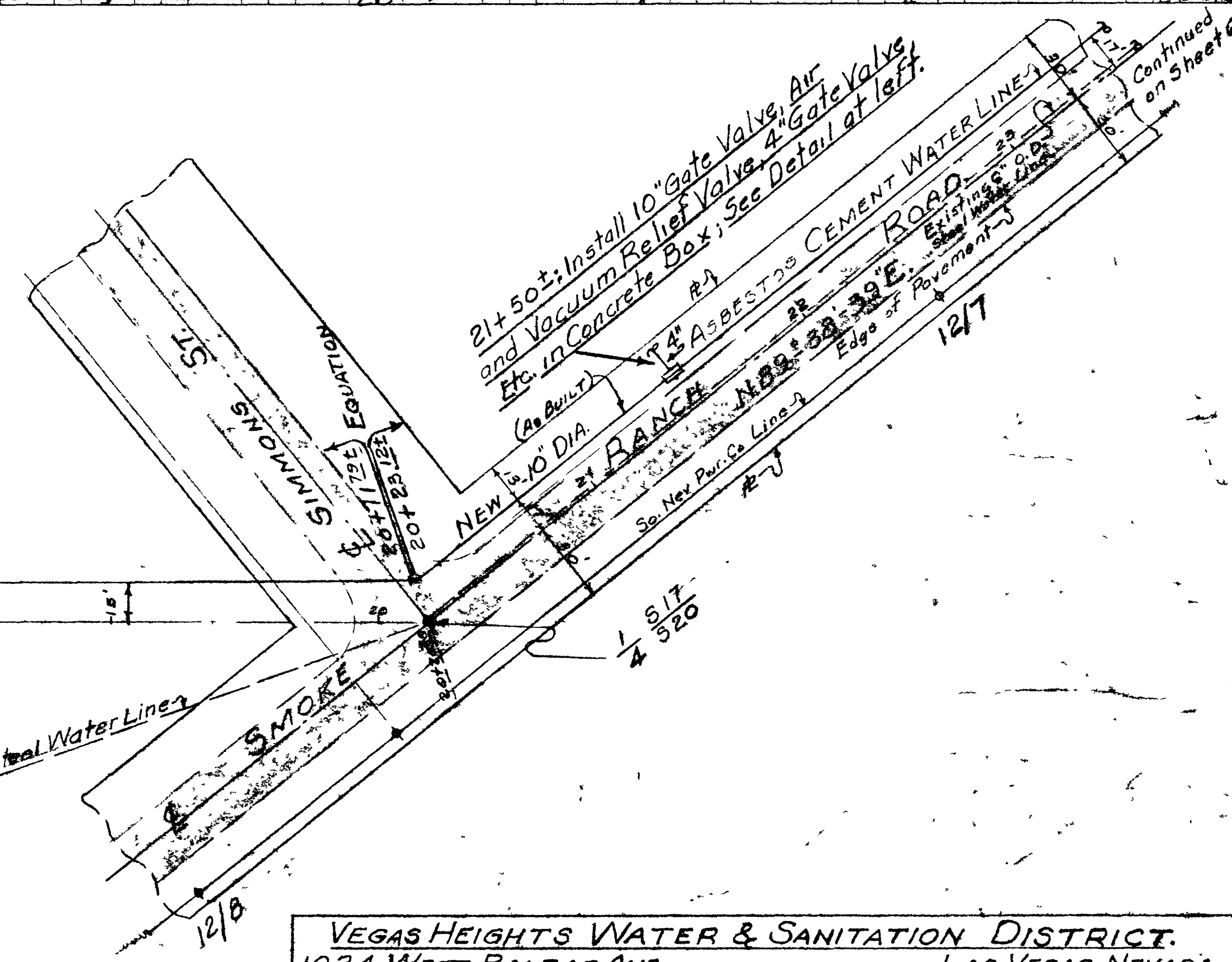
ELEVATION LOOKING NORTH

PLAN.

ELEVATION LOOKING WEST

DETAIL OF INSTALLATION (MAN HOLE, ETC.) FOR
DRAINING SECTION OF LINE.
SCALE: One inch = 4 Feet.

PLAN.



VEGAS HEIGHTS WATER & SANITATION DISTRICT.
1024 WEST BALZAR AVE LAS VEGAS, NEVADA.
10" DIAMETER WATER SUPPLY LINE - WELL FIELD TO
PUMPING PLANT & ON TO VEGAS HEIGHTS TRACT.

PLAN & PROFILE.
STA. 10+00 TO STA. 23+00.
Prepared by Ernest H. Clary, P.E.
Reg. Prof. Civil Engr. & Land
Surveyor - No. 290 - Nevada.
1210 Western St.
Las Vegas, Nevada.

Scale: Horiz. 1" = 40'; Vert. 1" = 2'.
Datum: City of Las Vegas, Nevada.
Elevations:
Date: May 18, 1962.
Sheet 7 of 24 Sheets. Drawing No. 62-21
3047 5674-3190

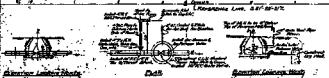


Sheet 4

Wm. H. H. H. & Son, Desm.
40-400 Avenue

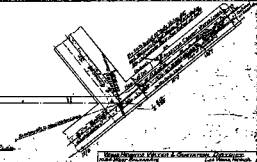


Section from Sheet 4
New 10" Dia. Vertical Center Water Log



Reference Section

Dept. of Marine & Naval Affairs, U.S. Navy



Wm. H. H. H. & Son, Desm.
40-400 Avenue
New York, N.Y.