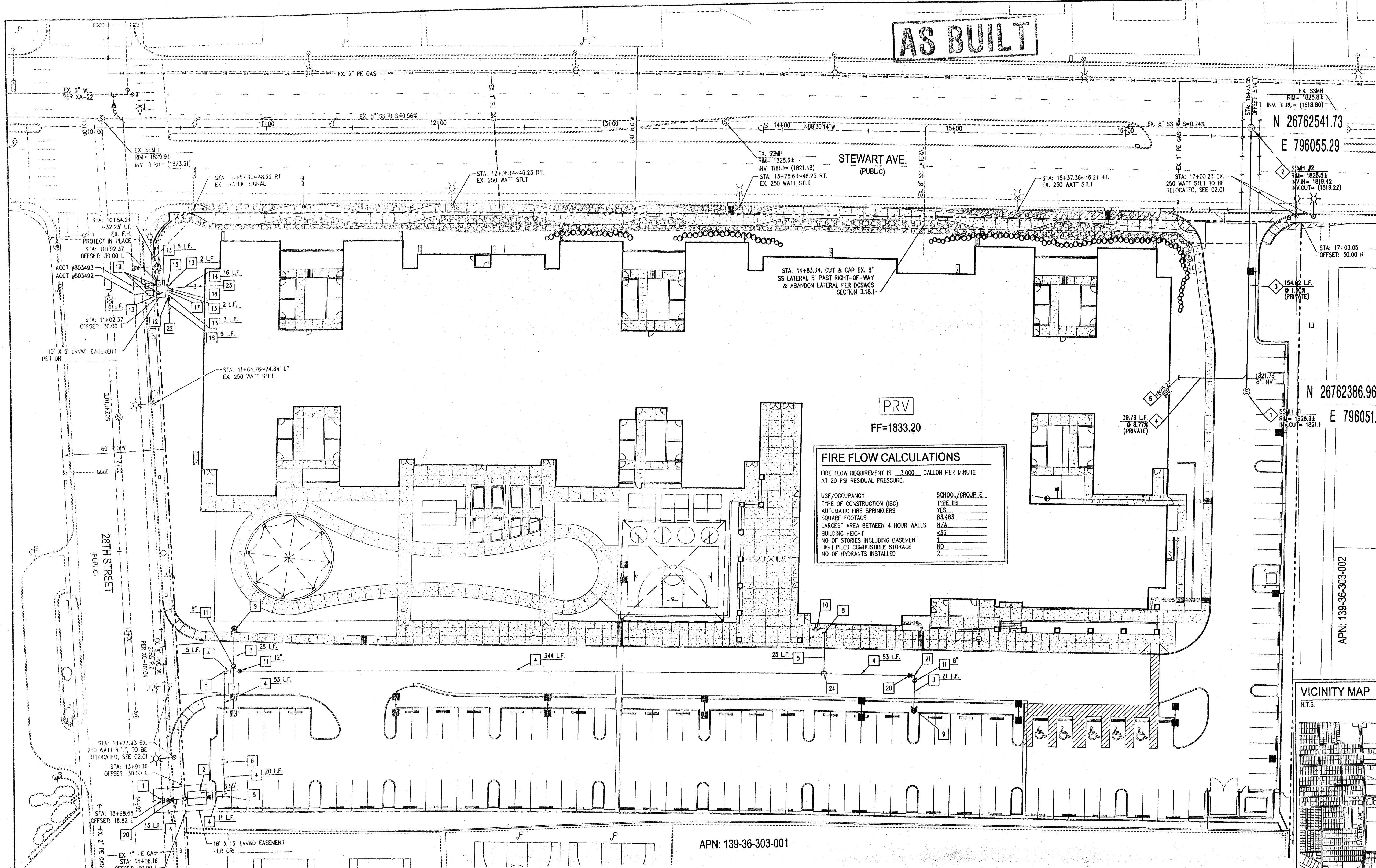


AS BUILT



FIRE FLOW CALCULATIONS

FIRE FLOW REQUIREMENT IS 3,000 GALLON PER MINUTE AT 20 PSI RESIDUAL PRESSURE.

USE/OCCUPANCY	SCHOOL / GROUP E
TYPE OF CONSTRUCTION (IBC)	TYPE IIB
AUTOMATIC FIRE SPRINKLERS	YES
SQUARE FOOTAGE	83,483
LARGEST AREA BETWEEN 4 HOUR WALLS	N/A
BUILDING HEIGHT	<35'
NO OF STORIES INCLUDING BASEMENT	1
HIGH PILED COMBUSTIBLE STORAGE	NO
NO OF HYDRANTS INSTALLED	2

AVOID HITTING UNDERGROUND TRAFFIC SIGNAL SYSTEMS AND STREET LIGHT SYSTEM. CONSULT ITS COSTLY.

Call before you do UnderGround
 1-702-455-7511
 CLARK COUNTY TRAFFIC OPERATIONS

AVOID HITTING OVERHEAD POWER LINES. IT'S COSTLY.

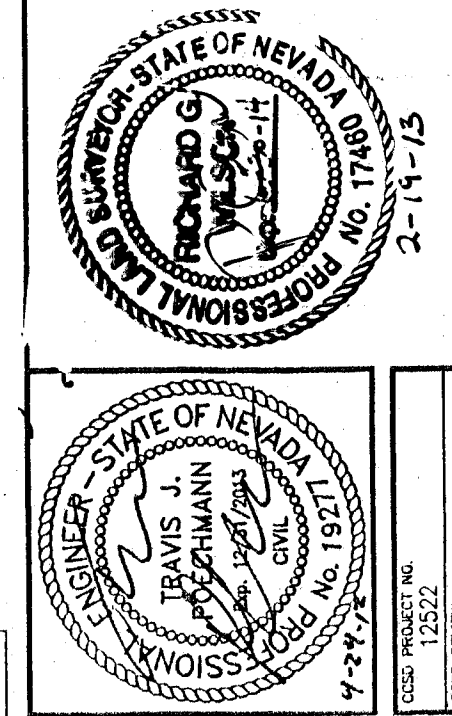
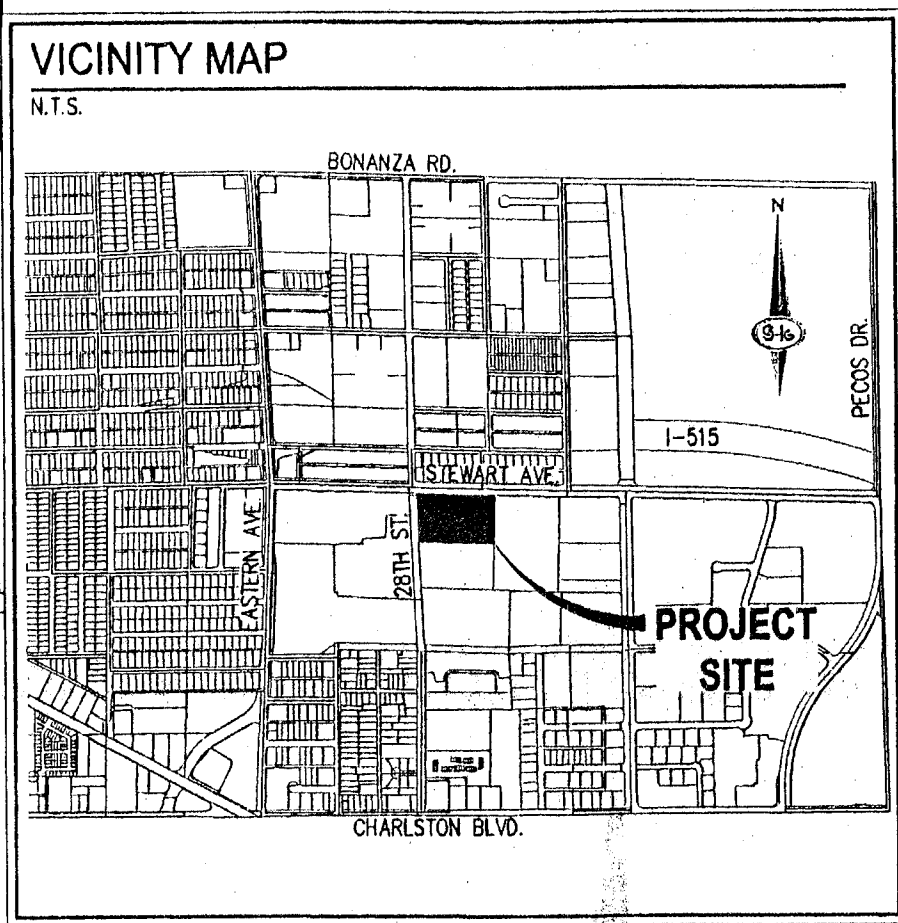
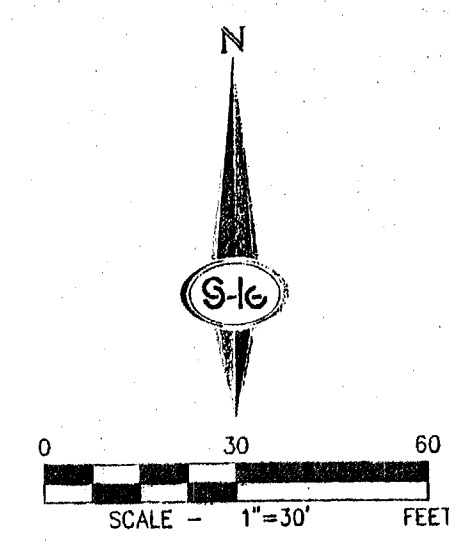
CALL BEFORE YOU DO OVERHEAD
 1-702-227-2929

Call before you Dig
 Avoid cutting underground utility lines at the ready.

Call
 1-800-277-2600
 CLARK COUNTY TRAFFIC OPERATIONS
 1-702-455-7544

REVISIONS

REV	DESCRIPTION	DATE	BY



PROJECT NO.	12527
DATE	APRIL 24, 2012
APPROVED BY	[Signature]
DESIGNED BY	[Signature]
CHECKED BY	[Signature]
DRAWN BY	[Signature]
PERMIT SET	APRIL 24, 2012
SCALE	AS SHOWN

DISCLAIMER NOTE

EXISTING UTILITY LOCATIONS SHOWN HEREON ARE APPROXIMATE ONLY. IT SHALL BE THE CONTRACTOR'S RESPONSIBILITY TO DETERMINE THE EXACT VERTICAL AND HORIZONTAL LOCATION OF ALL EXISTING UNDERGROUND UTILITIES PRIOR TO COMMENCING CONSTRUCTION. NO REPRESENTATION IS MADE THAT ALL EXISTING UTILITIES ARE SHOWN HEREON. THE ENGINEER ASSUMES NO RESPONSIBILITY FOR UTILITIES NOT SHOWN IN THEIR PROPER LOCATION.

BENCHMARK

CITY OF LAS VEGAS BENCHMARK ID: 2L0V026W4
 ROCKET AND PLATE IN TOP OF CURB AT SOUTHWEST CORNER OF STEWART AND EASTERN.

ELEVATION = 1845.98 FEET, 562.856 METERS

PER CITY OF LAS VEGAS BENCHMARKS - 2008 ADJUSTMENTS (LAST UPDATED 09/24/2010)

BASIS OF BEARINGS

SOUTH 89°30'14" EAST, BEING THE BEARING OF THE NORTH LINE OF THE SOUTHWEST QUARTER (SW1/4) OF SECTION 36, TOWNSHIP 20 SOUTH, RANGE 61 EAST, N.D.M., CITY OF LAS VEGAS, CLARK COUNTY, NEVADA, AS SHOWN BY MAP THEREOF ON FILE IN FILE 100, PAGE 50 OF PARCEL MAPS IN THE CLARK COUNTY RECORDER'S OFFICE, CLARK COUNTY, NEVADA.

- WATER CONSTRUCTION NOTES**
- INSTALL 8" TAPPING SLEEVE AND 8" TAPPING VALVE PER UDACS PLT. No. 34.
 - INSTALL DUAL 8" RPDA'S PER UDACS PLT. No. 58.
 - INSTALL 8" PVC WATER LINE.
 - INSTALL 12" PVC WATER LINE.
 - INSTALL 8" PVC WATER LINE.
 - INSTALL 12" 5' BEND WITH THRUST BLOCKS PER UDACS PLT. No. 31.
 - INSTALL 12"x12"x8" TEE WITH THRUST BLOCKS PER UDACS PLT. No. 31. SEE PLUMBING PLANS (BY OTHERS) FOR BUILDING CONNECTION LOCATION AND DETAILS.
 - INSTALL FIRE HYDRANT ASSEMBLY PER DETAIL B ON C6.01
 - INSTALL GATE VALVE WITH ANCHOR BLOCKS PER UDACS PLT. No. 30, SIZE PER PLAN.
 - FDC, SEE PLUMBING PLANS FOR CONTINUATION.
 - INSTALL 2" RPPA PER UDACS PLT. No. 8.
 - INSTALL 2" DOMESTIC WATER LINE.
 - INSTALL 3" DOMESTIC WATER LINE.
 - INSTALL 2" 90' BEND.
 - INSTALL 2"x2"x3" TEE.
 - INSTALL 2"x2"x2" TEE.
 - INSTALL 3" IRRIGATION WATER LINE.
 - EX. (2) 2" DOMESTIC WATER METERS & (2) 2" RPPA'S. PROTECTION IN PLACE.

- WATER CONSTRUCTION NOTES**
- INSTALL 12"x8" REDUCER PER UDACS PLATE NO. 30.
 - INSTALL 90' BEND WITH THRUST BLOCKS PER UDACS PLT. No. 31, SIZE PER PLAN.
 - SEE LANDSCAPE PLANS (BY OTHERS) FOR CONTINUATION.
 - SEE PLUMBING PLANS FOR CONTINUATION.
 - INSTALL 12"x12"x6" TEE WITH THRUST BLOCKS PER UDACS. PLT. No. 31

- SEWER CONSTRUCTION NOTES**
- INSTALL 48" STANDARD PRE-CAST MANHOLE PER DCSWCS SD-1A & 1B.
 - CONSTRUCT 48" STANDARD MANHOLE WITH CAST IN PLACE MANHOLE BASE PER DCSWCS SD-7.
 - INSTALL 8" PVC SEWER PIPE, SLOPE PER PLAN.
 - INSTALL 8" PVC SEWER LATERAL PER DCSWCS SD-22, SLOPE PER PLAN.
 - SEE PLUMBING PLANS FOR CONTINUATION.

ESTIMATED WASTE WATER CONTRIBUTIONS

PROPOSED PROJECT IS SCHOOL
 PROJECT APN: 176-21-301-013 & 014
 BUILDING = 83,074 S.F. = 275 FIXTURES

275 FIXTURES x 0.65 = 179 ERU'S
 179 ERU'S x 250 = 44,750 / 1,000,000 = 0.0448 MGD
 0.0448 - 0.09044 x 2.6168 = 3.468 x 0.0448 = 0.1552 MGD PEAK
 PEAK FACTOR IS THE ASCE PEAKING FACTOR=AVG. FLOW IN MGD - 0.9244(2.6168)

- UTILITY NOTES**
- WATER MAIN JOINT DEFLECTION (PVC, 4" - 24")
 PVC PIPE SHALL BE DEFLECTED AT THE JOINT ONLY. THE MAXIMUM ALLOWABLE DEFLECTION SHALL BE ONE (1) DEGREE PER JOINT WITH A MINIMUM RADIUS OF CURVATURE OF 1,150 FEET, PER UDACS 2.07.01 AND 2.07.02. FOR CHANGES IN DIRECTION EXCEEDING THE MAXIMUM ALLOWABLE JOINT DEFLECTION, FITTINGS SHALL BE USED. ESN.059
 - ALL SEWER/STORM DRAINS CROSSING WATER LINES MUST CONFORM TO SECTION 2.22.02 OF THE UNIFORM DESIGN AND CONSTRUCTION STANDARDS FOR POTABLE WATER SYSTEMS (UDACS) FOR WATER AND STORM MAIN CROSSINGS AND CLEARANCES. ESN.064
 - INSTALL PIPELINE MARKER BALLS IN TRENCH ABOVE EACH HORIZONTAL ELBOW FITTING. PER UDACS PLATE NO. 15. ESN.062
 - ALL NON-POTABLE FIRE WATER LINES CROSSING POTABLE DOMESTIC WATER LINES ARE TO BE INSTALLED WITH "A VERTICAL SEPARATION OF NO LESS THAN SIX INCHES..." AND IN ACCORDANCE WITH UDACS 2.20.01, 2.04.05, 2.19.02.B1, AND 2.10.02.B2.
 - DISPOSAL OF ASBESTOS CEMENT PIPE SHALL BE IN ACCORDANCE WITH ANNA, LOCAL, STATE, AND FEDERAL REGULATIONS. ESN.053 REVISED 8/1/04
 - ALL ABOVE GROUND UTILITY APPURTENANCES SHALL CONFORM TO THE REQUIREMENTS OF TITLE 19.08
 - REDUCED PRESSURE PRINCIPLE ASSEMBLY (1) 2" (PRIVATE)
 APPROVED REDUCED PRESSURE PRINCIPLE ASSEMBLY(S) SHALL BE INSTALLED PER THE UDACS PLATE NO. 8
 ANY BLOCK WALL OR OTHER FENCE MATERIAL SHALL BE DESIGNED AND CONSTRUCTED AROUND THE OUTSIDE OF THE EASEMENT(S) TO ALLOW THE DISTRICT DIRECT ACCESS FROM THE ADJACENT RIGHT-OF-WAY. EASEMENTS SHALL BE CLEARLY MARKED OR STAKED PRIOR TO THE START OF CONSTRUCTION. ESN.028
 - DUAL REDUCED PRESSURE DETECTOR ASSEMBLY (RPDA) 8"
 THE DUAL REDUCED PRESSURE DETECTOR ASSEMBLY(S) SHALL BE INSTALLED IN ACCORDANCE WITH THE UDACS PLATE NO. 58. ANY BLOCK WALL OR OTHER FENCE MATERIAL SHALL BE DESIGNED AND CONSTRUCTED AROUND THE OUTSIDE OF THE EASEMENT(S) SO AS TO ALLOW THE DISTRICT DIRECT ACCESS FROM THE ADJACENT RIGHT-OF-WAY. EASEMENTS SHALL BE CLEARLY MARKED OR STAKED PRIOR TO THE START OF CONSTRUCTION.

NOTE:

THIS PROPERTY MAY HAVE STATIC WATER PRESSURE IN EXCESS OF 80 PSI. THE UNIFORM PLUMBING CODE REQUIRES THAT INDIVIDUAL, ON-SITE (PRIVATE), PRESSURE-REDUCING VALVES BE INSTALLED WHENEVER THE PRESSURE EXCEEDS 80 PSI. PRV'S ARE THE DEVELOPER'S RESPONSIBILITY, AND WILL NOT BE INSPECTED OR INCLUDED IN THE ACCEPTANCE OF LVWD FACILITIES.

APPROVED FOR CONSTRUCTION

[Signature] 7 May 2012
 STATE FIRE MARSHAL

APPROVED FOR CONSTRUCTION
 [Signature] FOR DMS
 LAS VEGAS VALLEY WATER DISTRICT ENGINEERING SERVICES MANAGER
 DATE 5-9-12 PROJECT No. 116981
 LVWD APPROVED FIRE FLOW 3000 GPM AT 20 PSI RESIDUAL

CLARK COUNTY SCHOOL DISTRICT
 DESIGN MANAGEMENT / PLANNING AND DESIGN
 4170 INGLECO DRIVE
 LAS VEGAS, NEVADA 89121

VARIETY SCHOOL
 2800 EAST STEWART AVENUE
 LAS VEGAS, NEVADA 89119

UTILITY PLAN

SLATER HANFAN GROUP
 CONSULTING ENGINEERS & PLANNERS
 5740 S. ARVILLE STREET #216, LAS VEGAS, NV 89118
 PHONE (702) 284-4304 FAX (702) 284-4389

SHEET NO. **H 43825 C5.01**
 DWG # 715-3C

AS BUILT