

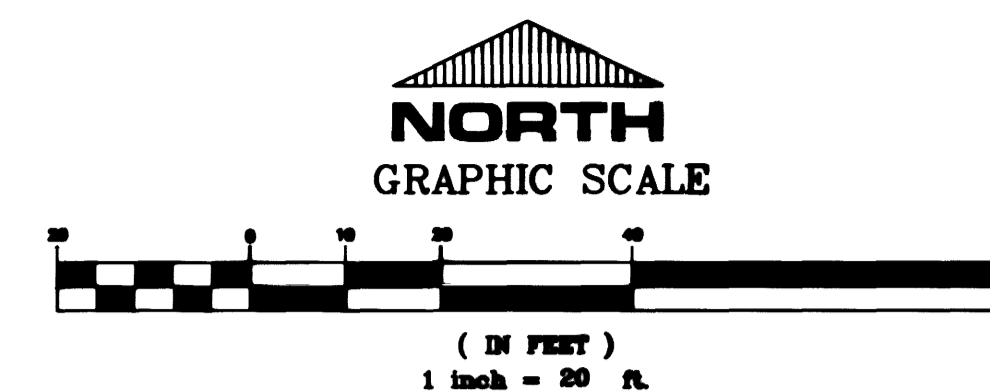


GENERAL NOTES

- PIPE LENGTHS AND SLOPES ARE CALCULATED FROM CENTER OF MH TO CENTER OF MH OR TO INSIDE FRONT FACE OF DL.
- DEPTH D FOR DROP INLETS (DI) IS AS DEFINED IN APPROPRIATE U.S.D. No. AND DETAILS SHEET D-1.

UTILITY DISCLAIMER

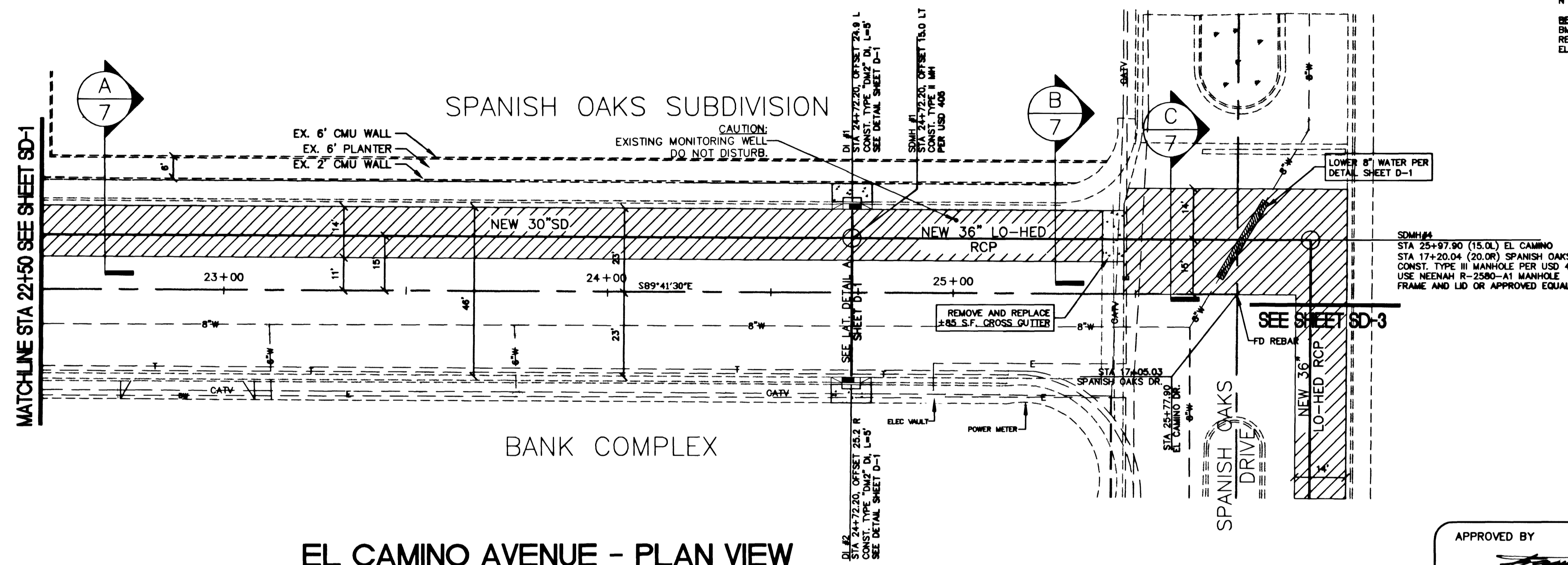
UTILITY LOCATIONS SHOWN HEREON ARE APPROXIMATE ONLY. IT SHALL BE THE CONTRACTOR'S RESPONSIBILITY TO DETERMINE THE EXACT VERTICAL AND HORIZONTAL LOCATION OF ALL EXISTING UNDERGROUND UTILITIES PRIOR TO COMMENCING CONSTRUCTION. NO REPRESENTATION IS MADE THAT ALL EXISTING UTILITIES ARE SHOWN HEREON. THE ENGINEER AND THE CITY OF LAS VEGAS ASSUMES NO RESPONSIBILITY FOR UTILITIES NOT SHOWN OR UTILITIES NOT SHOWN IN THEIR PROPER LOCATION.



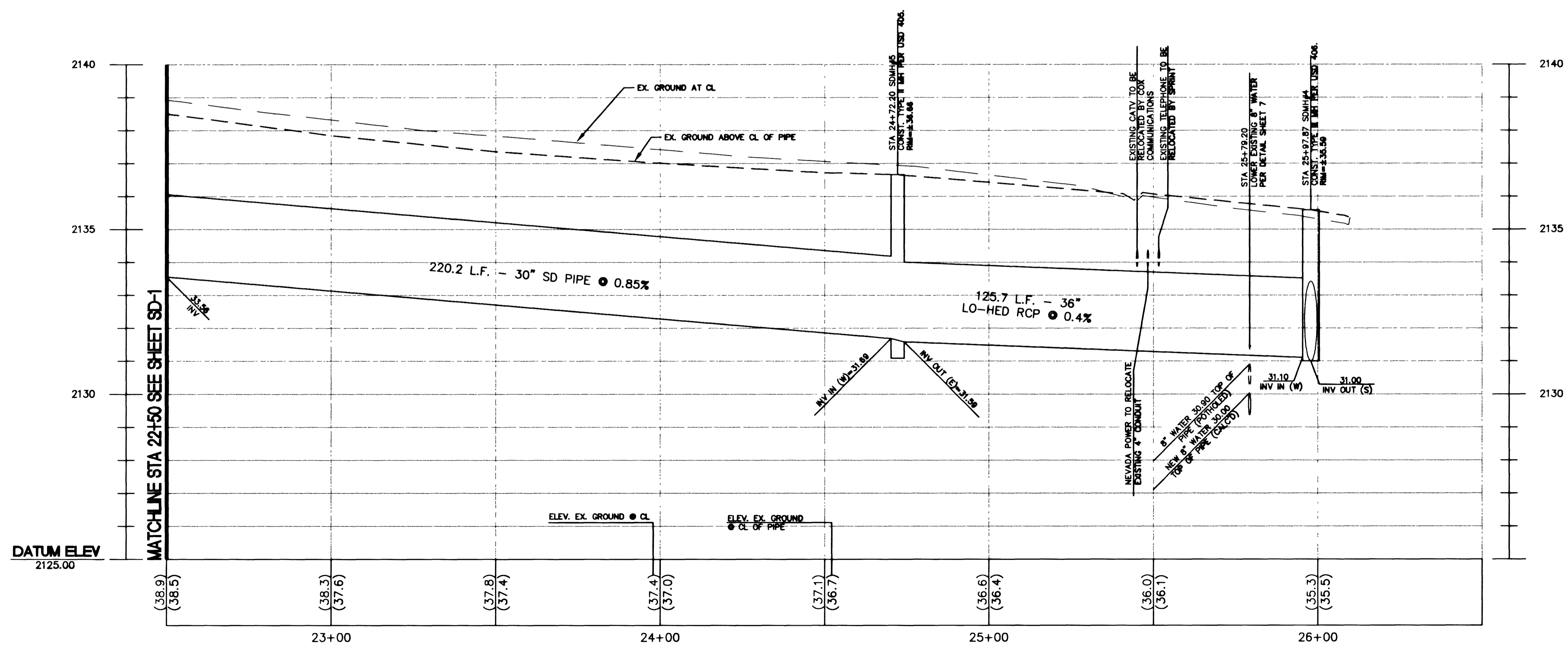
BASE OF BEARING:
N 00° 19' 35" E BEING THE CENTERLINE OF SPANISH OAKS DRIVE.
BENCH MARK:
BM# 7C11533WB RIVET AND PLATE IN TOP OF CURB NORTHEAST RETURN SAHARA AND SPANISH OAKS. ELEV. 2131.808 NAVD 88

HATCH LEGEND

AC-PATCH



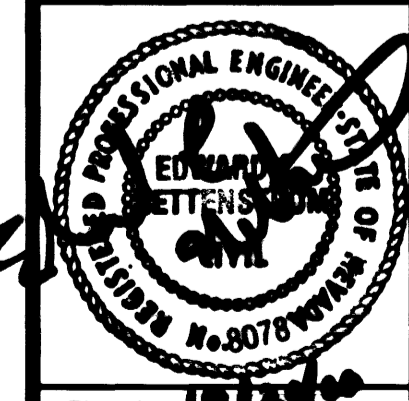
APPROVED BY
[Signature] 10/25/00
LAS VEGAS VALLEY WATER DISTRICT DATE



NO.	DATE	DESCRIPTION

DEPARTMENT OF PUBLIC WORKS
ENGINEERING DESIGN SECTION
CITY ENGINEER: CHARLES KAJKOWSKI, JR., P.E.
PROJECT MANAGER: ED NETERSTROM, P.E.
DESIGNED BY: MAS
DRAWN BY: MAS
CHECKED BY: ECN
DATE: 09/27/00

VALLEY VIEW STORM DRAIN
PHASE 2 - LOWER SYSTEM
PLAN AND PROFILE
STA 22+50 TO 26+00



Sheet **SD-2**
4 of 7
DRAWING NO. 327-V262
BID# 01.1730.15

24314