

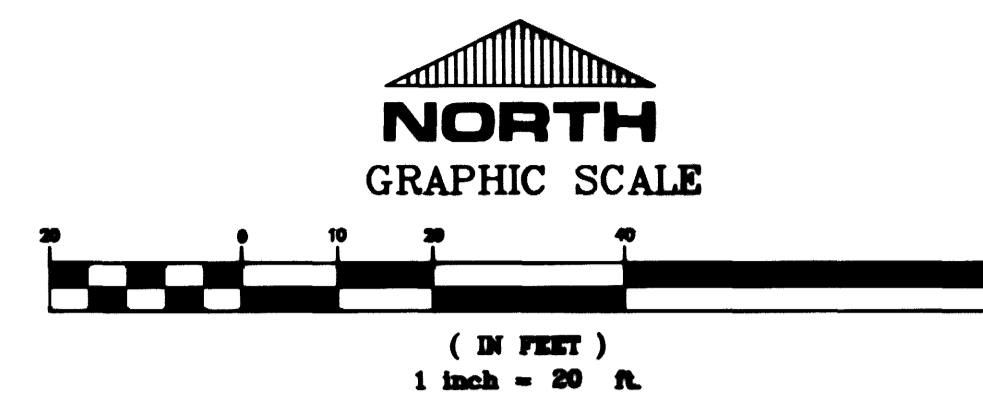


GENERAL NOTES

- PIPE LENGTHS AND SLOPES ARE CALCULATED FROM CENTER OF MH TO CENTER OF MH OR TO INSIDE FRONT FACE OF DL.
- DEPTH D FOR DROP INLETS (DI) IS AS DEFINED IN APPROPRIATE U.S.D. No. AND PER DETAIL SHEET D-1.

UTILITY DISCLAIMER

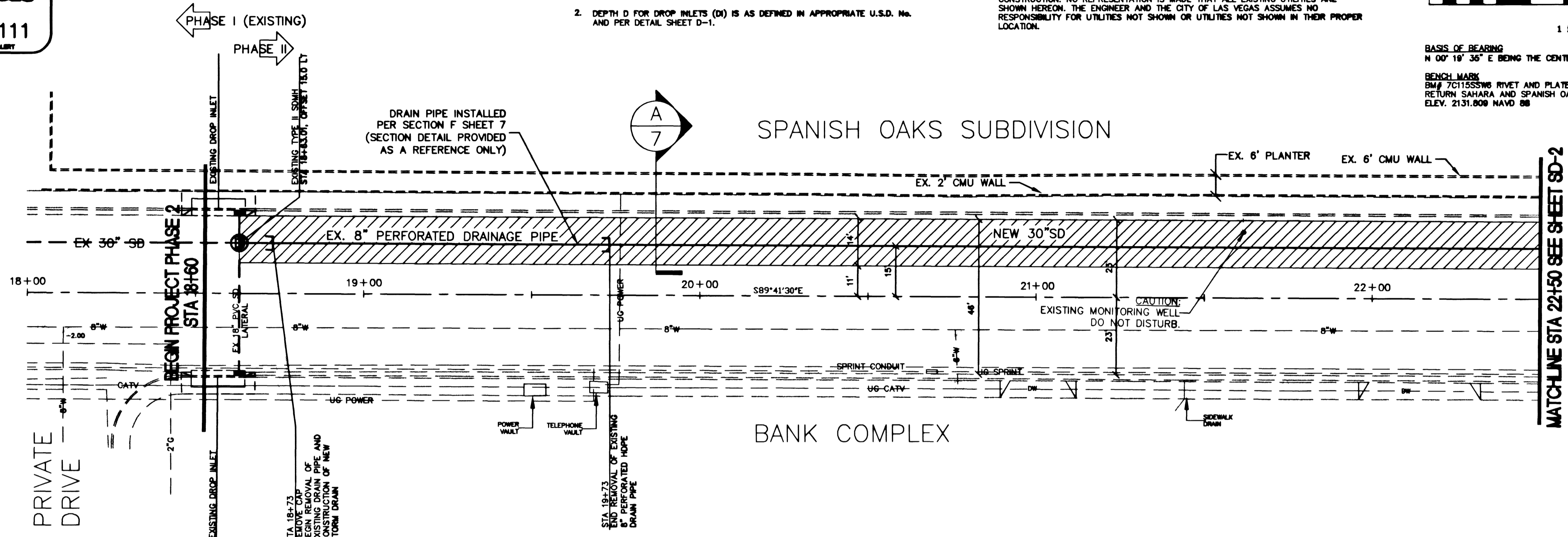
UTILITY LOCATIONS SHOWN HEREON ARE APPROXIMATE ONLY. IT SHALL BE THE CONTRACTOR'S RESPONSIBILITY TO DETERMINE THE EXACT VERTICAL AND HORIZONTAL LOCATION OF ALL EXISTING UNDERGROUND UTILITIES PRIOR TO COMMENCING CONSTRUCTION. NO REPRESENTATION IS MADE THAT ALL EXISTING UTILITIES ARE SHOWN HEREON. THE ENGINEER AND THE CITY OF LAS VEGAS ASSUMES NO RESPONSIBILITY FOR UTILITIES NOT SHOWN OR UTILITIES NOT SHOWN IN THEIR PROPER LOCATION.



BASIS OF BEARING
N 00° 18' 35" E BEING THE CENTERLINE OF SPANISH OAKS DRIVE.
BENCH MARK
BM # 7C155586 RIVET AND PLATE IN TOP OF CURB NORTHEAST RETURN SAHARA AND SPANISH OAKS.
ELEV. 2131.808 NAVD 88

HATCH LEGEND

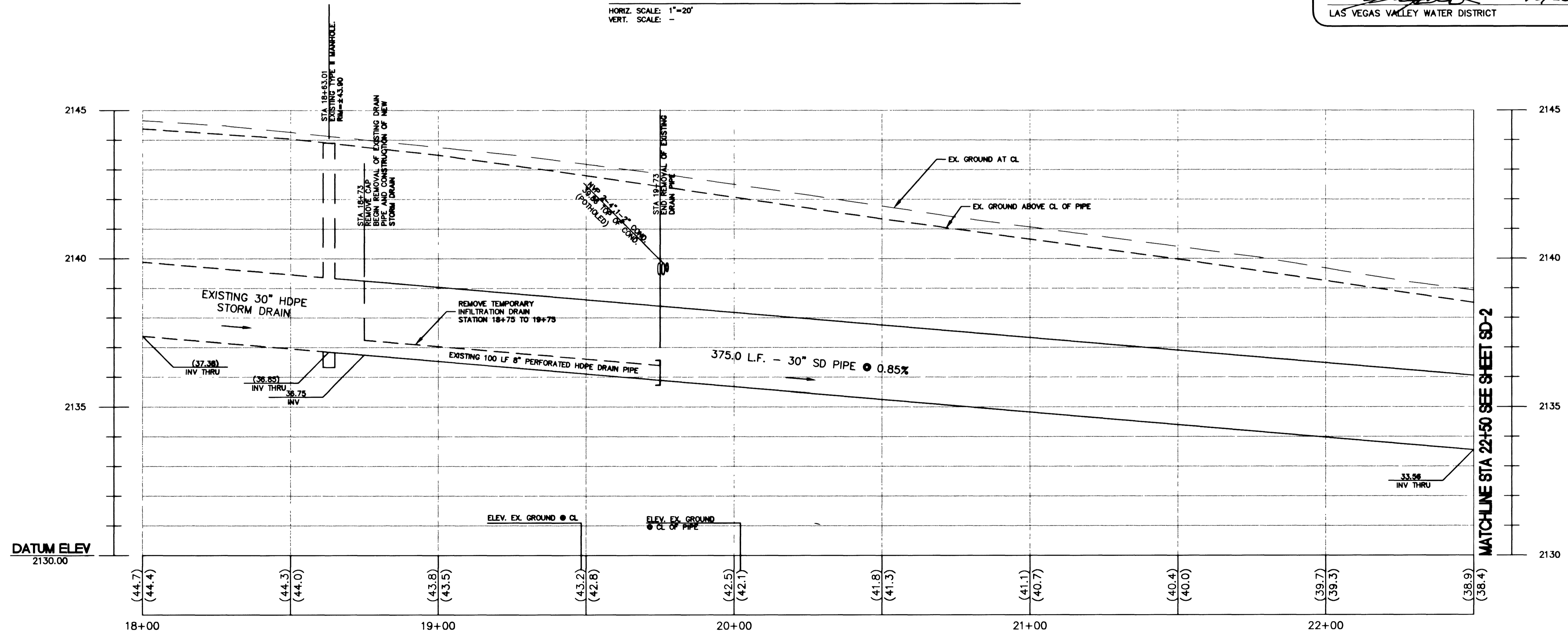
AC-PATCH



EL CAMINO AVENUE - PLAN VIEW

HORIZ. SCALE: 1"=20'
VERT. SCALE: -

APPROVED BY
[Signature] 10/25/00
LAS VEGAS VALLEY WATER DISTRICT DATE



EL CAMINO AVENUE - PROFILE

HORIZ. SCALE: 1"=20'
VERT. SCALE: 1"=2'

REVISIONS	NO.	DATE	DESCRIPTION	APP'D
DEPARTMENT OF PUBLIC WORKS				
ENGINEERING DESIGN SECTION				
CITY ENGINEER:		CHARLES KAJKOWSKI, JR., P.E.		
PROJECT MANAGER:		ED NETERSTROM, P.E.		
DESIGNED BY:		MAS		
DRAWN BY:		MAS		
CHECKED BY:		ECN		
DATE:		10/12/00		
VALLEY VIEW STORM DRAIN				
PHASE 2 - LOWER SYSTEM				
PLAN AND PROFILE				
STA 18+00 TO 22+50				
Sheet SD-1				
3 of 7				
DRAWING NO. 327-V262				
BID# 01.1730.15				

24313