

Call before you Dig.
1-800-227-2600
UNDERGROUND SERVICE ALERT (USA)

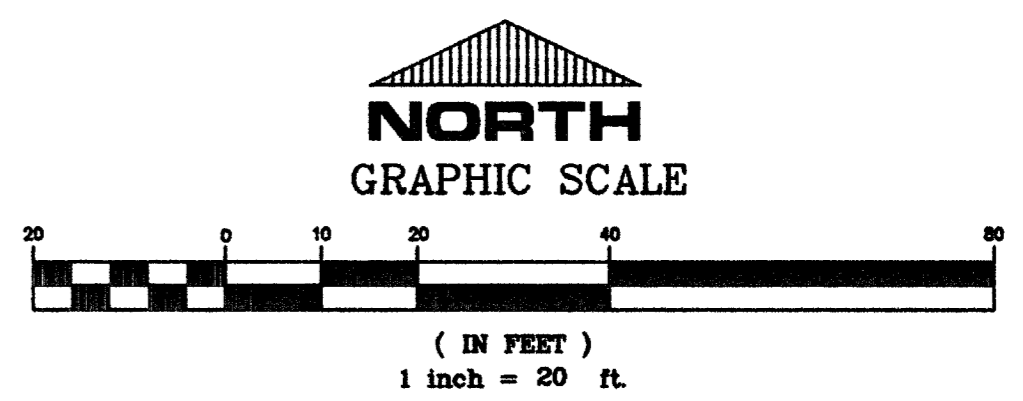
SAFETY ALERT
Call before you Overhead
593-6111
OVERHEAD SERVICE ALERT

GENERAL NOTES

- PIPE LENGTHS AND SLOPES ARE CALCULATED FROM CENTER OF MH TO CENTER OF MH OR TO INSIDE FRONT FACE OF DI.
- DEPTH D FOR DROP INLETS (DI) IS AS DEFINED IN APPROPRIATE U.S.D. No.

UTILITY DISCLAIMER

UTILITY LOCATIONS SHOWN HEREON ARE APPROXIMATE ONLY. IT SHALL BE THE CONTRACTOR'S RESPONSIBILITY TO DETERMINE THE EXACT VERTICAL AND HORIZONTAL LOCATION OF ALL EXISTING UNDERGROUND UTILITIES PRIOR TO COMMENCING CONSTRUCTION. NO REPRESENTATION IS MADE THAT ALL EXISTING UTILITIES ARE SHOWN HEREON. THE ENGINEER AND THE CITY OF LAS VEGAS ASSUMES NO RESPONSIBILITY FOR UTILITIES NOT SHOWN OR UTILITIES NOT SHOWN IN THEIR PROPER LOCATION.

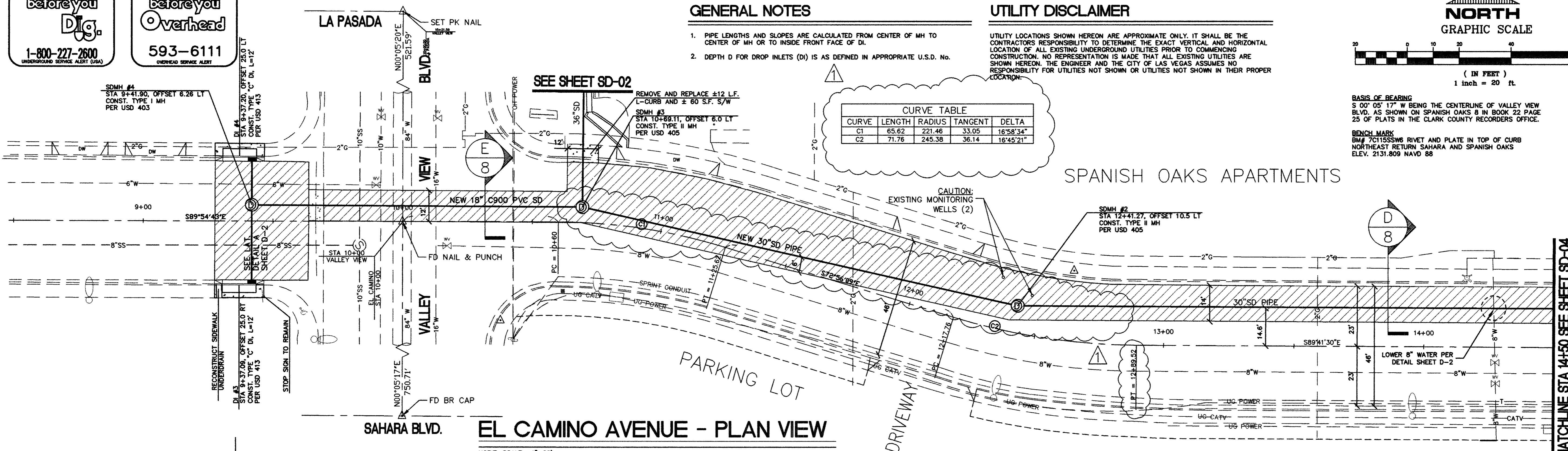


BASIS OF BEARING
S 00° 05' 17" W BEING THE CENTERLINE OF VALLEY VIEW BLVD. AS SHOWN ON SPANISH OAKS 8 IN BOOK 22 PAGE 25 OF PLATS IN THE CLARK COUNTY RECORDERS OFFICE.

BENCH MARK
BM# 7C1155S66 RIVET AND PLATE IN TOP OF CURB NORTHEAST RETURN SAHARA AND SPANISH OAKS ELEV. 2131.809 NAVD 88

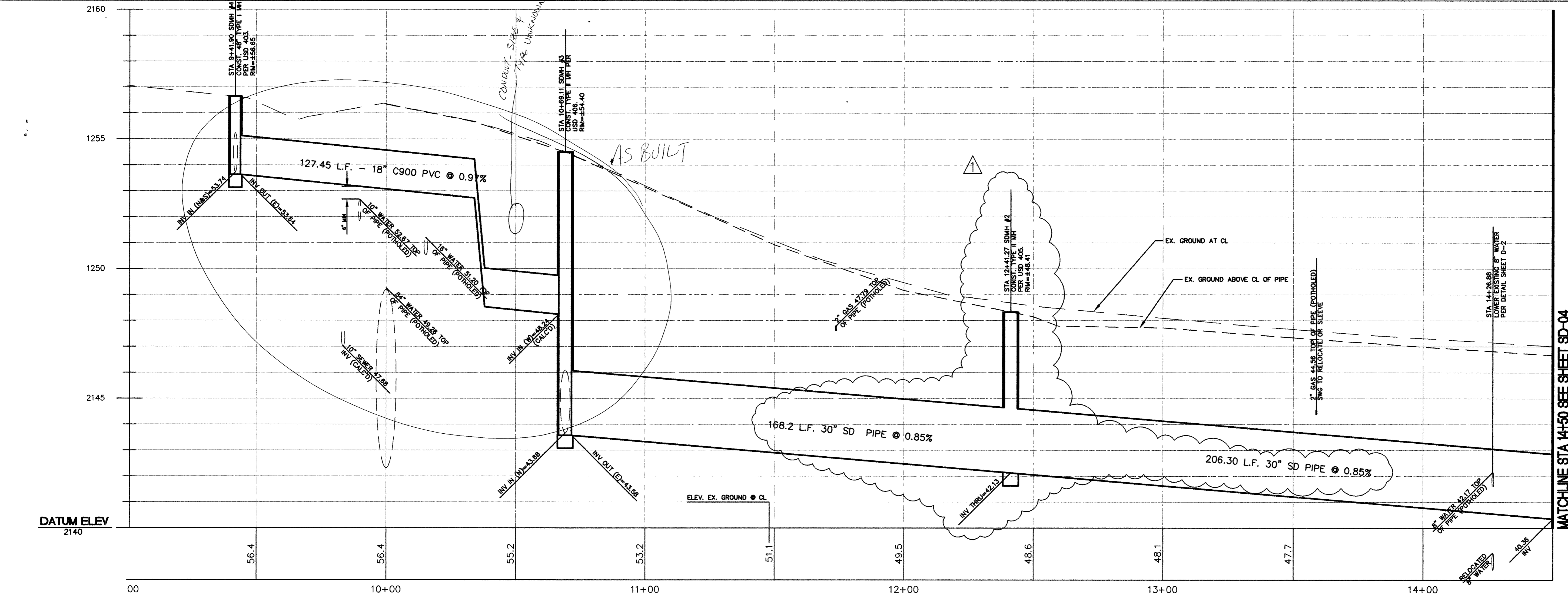
CURVE TABLE

CURVE	LENGTH	RADIUS	TANGENT	DELTA
C1	65.62	221.46	33.05	16°58'34"
C2	71.76	245.38	38.14	18°45'21"



EL CAMINO AVENUE - PLAN VIEW

HORIZ. SCALE: 1"=20'
VERT. SCALE: 1"=2'



EL CAMINO AVENUE - PROFILE

HORIZ. SCALE: 1"=20'
VERT. SCALE: 1"=2'

REVISIONS

NO.	DATE	DESCRIPTION
1	6/8/00	RELOCATION OF MANHOLE, CURVE & PI DATA REVISION

DEPARTMENT OF PUBLIC WORKS
ENGINEERING DESIGN SECTION

CITY ENGINEER: CHARLES KAWONSKI, P.E.
PROJECT MANAGER: ED NETTENSTROM, P.E.

DESIGNED BY: MAS/ESM
DRAWN BY: MAS/ESM
CHECKED BY: EON

HORIZONTAL SCALE: 1"=20'
VERTICAL SCALE: 1"=2'
DATE: 6/8/00

VALLEY VIEW STORM DRAIN
PHASE 1 - UPPER SYSTEM

PLAN AND PROFILE
STATION 9+00 TO 14+50

TITLE:
SHEET:

Sheet
SD-3
5 of 9
DRAWING NO.
327-V259
BID#: 00.1730.21

91368