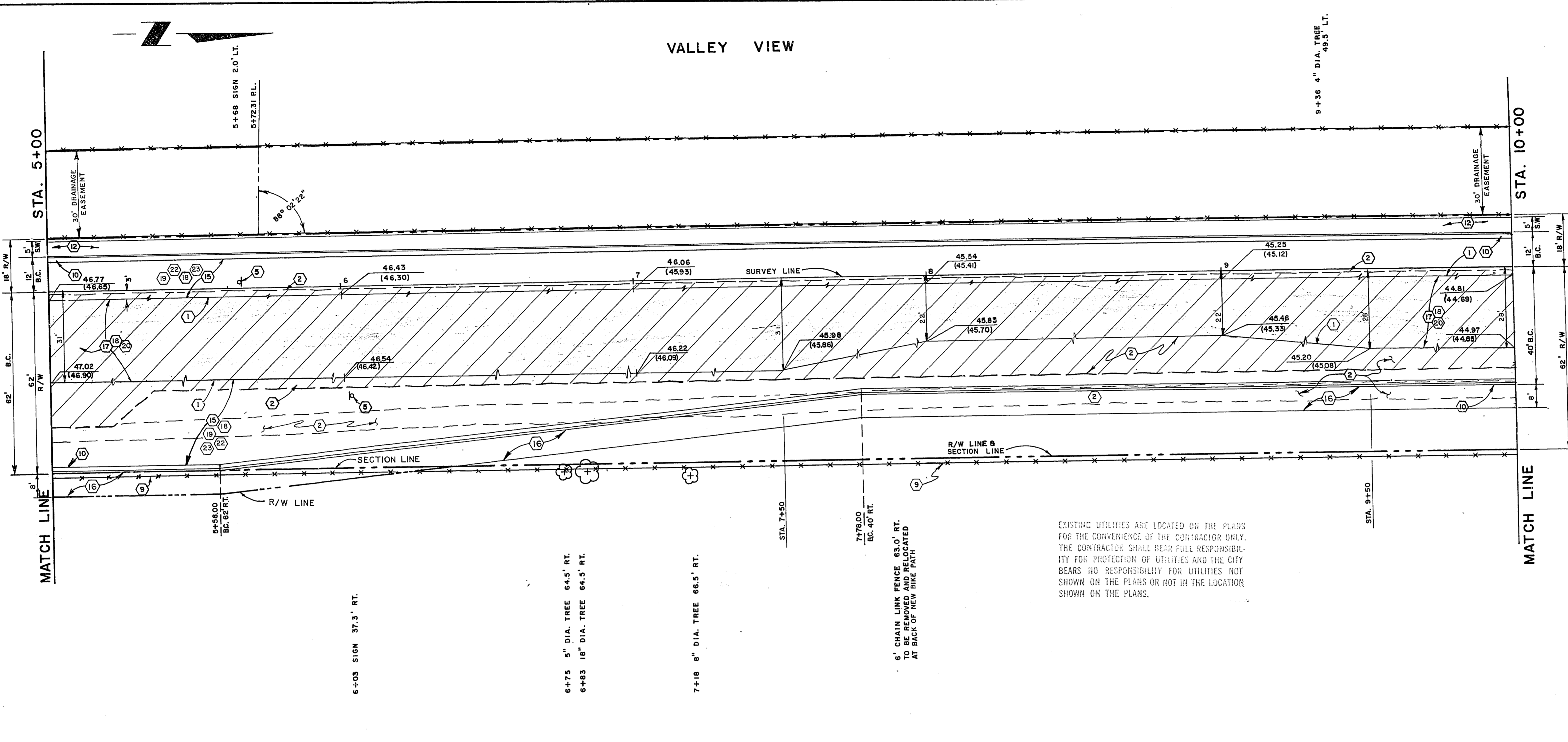


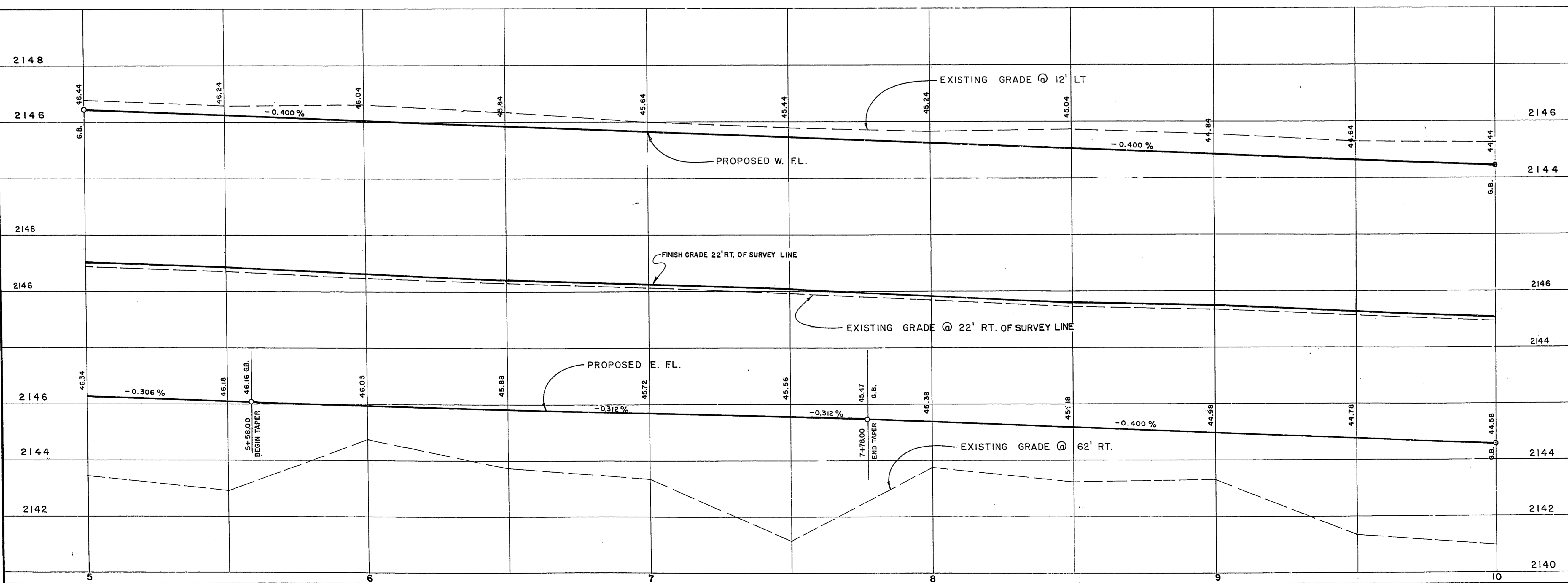
VALLEY VIEW



EXISTING UTILITIES ARE LOCATED ON THE PLANS FOR THE CONVENIENCE OF THE CONTRACTOR ONLY. THE CONTRACTOR SHALL BEAR FULL RESPONSIBILITY FOR PROTECTION OF UTILITIES AND THE CITY BEARS NO RESPONSIBILITY FOR UTILITIES NOT SHOWN ON THE PLANS OR NOT IN THE LOCATION SHOWN ON THE PLANS.

APPROXIMATE QUANTITIES THIS SHEET

ITEM	DESCRIPTION	C.L.V.	S.I.D.	R.S.H.	TOTAL	UNIT
715	REMOVE A.C. PAVEMENT	61		715	715	SY
1002	WHEELCUT A.C. PAVEMENT	43		1002	1002	LF
290	TYPE I GRAVEL BASE			290	321	CY
302.200	TYPE II GRAVEL BASE			238	281	CY
333.501	3/4 IN. OPEN-GRADE PLANT MIX			3083	3083	SY
334.003	1-1/2 IN. A.C. PAVEMENT (BIKE PATH)			43	43	TN
334.006	3 IN. A.C. PAVEMENT			327	327	TN
340.014	BITUMINOUS PRIME COAT			500	500	GAL
340.014	REMOVE & RELOCATE FENCE	1002		1002	1002	LF
340.114	24 IN. L-TYPE CURB & GUTTER	2500		2500	2500	SF
331.003	CONCRETE SIDEWALK			132	132	TN
201.100	1-1/2\"/>					



Apple
11/177

CONTRACT DRAWING
OCT 28, 1977

NO.	DESCRIPTIONS	BY	DATE	APPROVAL

CITY OF LAS VEGAS
CLAY COUNTY, NEVADA

Department of Public Services
 Engineering Design Division

VALLEY VIEW BLVD.
 WEST CHARLESTON BOULEVARD
 TO WEST FREMONT EXPRESSWAY

STA 5+00 TO STA. 10+00

scale (h) 1" = 20' scale (v) 1" = 2'
 w.o.no. 7704 f.b.k.no. 75-5X drawing no. 107V-967
 design by C. KAJKOWSKI drawn by S.J.A. & J.A.M. date
 approved by Director of Public Services date 11/27/77 sht. 4 of 23