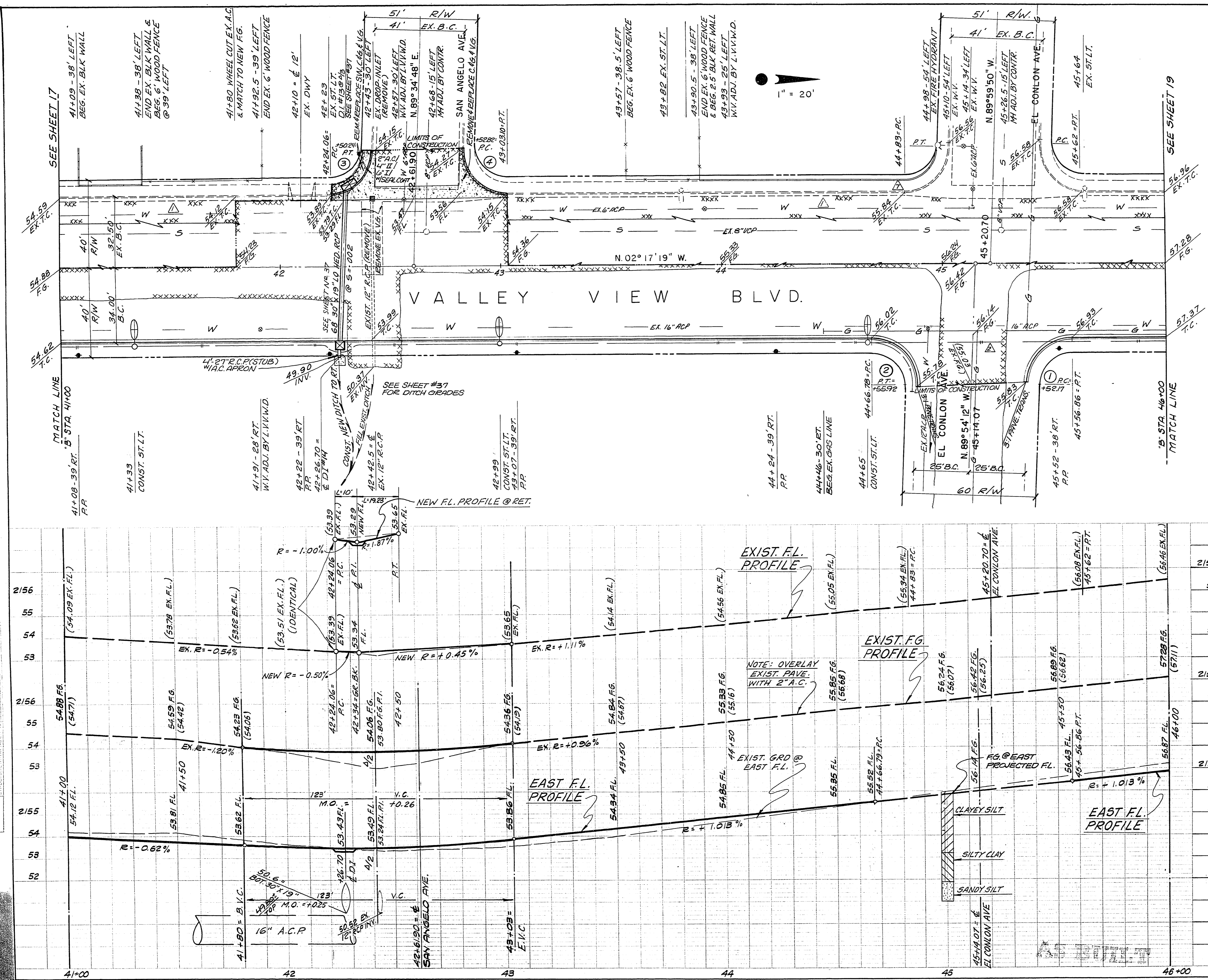


PLAN
 HORIZONTAL CONTROL
 POINTS
 1. 2. 3. 4. 5. 6. 7. 8. 9. 10. 11. 12. 13. 14. 15. 16. 17. 18. 19. 20. 21. 22. 23. 24. 25. 26. 27. 28. 29. 30. 31. 32. 33. 34. 35. 36. 37. 38. 39. 40. 41. 42. 43. 44. 45. 46. 47. 48. 49. 50. 51. 52. 53. 54. 55. 56. 57. 58. 59. 60. 61. 62. 63. 64. 65. 66. 67. 68. 69. 70. 71. 72. 73. 74. 75. 76. 77. 78. 79. 80. 81. 82. 83. 84. 85. 86. 87. 88. 89. 90. 91. 92. 93. 94. 95. 96. 97. 98. 99. 100.

PROFILE
 VERTICAL CONTROL
 POINTS
 1. 2. 3. 4. 5. 6. 7. 8. 9. 10. 11. 12. 13. 14. 15. 16. 17. 18. 19. 20. 21. 22. 23. 24. 25. 26. 27. 28. 29. 30. 31. 32. 33. 34. 35. 36. 37. 38. 39. 40. 41. 42. 43. 44. 45. 46. 47. 48. 49. 50. 51. 52. 53. 54. 55. 56. 57. 58. 59. 60. 61. 62. 63. 64. 65. 66. 67. 68. 69. 70. 71. 72. 73. 74. 75. 76. 77. 78. 79. 80. 81. 82. 83. 84. 85. 86. 87. 88. 89. 90. 91. 92. 93. 94. 95. 96. 97. 98. 99. 100.



| ITEM | DESCRIPTION | APPROXIMATE QUANTITY ESTIMATE | UNIT |
|---------|---|-------------------------------|--------|
| 201.100 | ROADWAY EXCAVATION | 679 | C.Y. |
| 302.000 | TYPE I GRAVEL BASE | 143 | C.Y. |
| 302.200 | TYPE II GRAVEL BASE | 86 | C.Y. |
| 331.000 | ASPHALT CONCRETE PAVEMENT OVERLAY | 172 | TON |
| 334.000 | ASPHALT CONCRETE PAVEMENT - 5" | 574 | TON |
| 338.500 | 1/2" PLANT MIX BITUMINOUS OPEN-GRADED SURFACE | 473 | TON |
| 340.010 | CONCRETE "I" TYPE CURB & GUTTER (24" WIDE) | 125 | SR.FT. |
| 340.010 | VALLEY GUTTER | 125 | SR.FT. |
| 200.110 | CONCRETE REMOVAL | 125 | SR.FT. |
| 334.004 | ASPHALT CONCRETE PAVEMENT - 2" | 8 | TON |
| 334.800 | BITUMINOUS PRIME COAT | 105 | TON |
| 512.500 | ADJUST SANITARY SEWER MANHOLE | 2 | EA. |
| 400.222 | STREET LIGHT | 3 | EA. |

CONTACT DRAWING MAY 3 1974

| NO. | ELEV. | DESCRIPTION |
|-----|-------|---|
| 7 | 55.85 | C.L.V. BM. #167A13 - SW COR. EL CONLON INT. |

REVISIONS

| REV. | DATE | DESCRIPTION | APP'D. |
|------|---------|-----------------------------------|--------|
| 55 | 5-16-74 | OMIT HEATER REMIX - ADD PAVE. GR. | CP |
| 54 | 5-16-74 | ADDED ST. LT. CONDUIT | CP |

DELTA ENGINEERING INC.
 4239 W. SAHARA AVE.
 LAS VEGAS, NEV. 89102
 PHONE: (702) 876-0330

VALLEY VIEW BLVD.
 SPRING MOUNTAIN RD. TO CHARLESTON BLVD.
 "B" STA. 41+00 TO 46+00

H. SCALE: 1"=20' V. SCALE: 1"=2'
 W.O. NO. 71102 CHKD. DWN. E.C. FILE NO. 107-V926
 DATE: 5-3-74 SHEET 18 OF 45