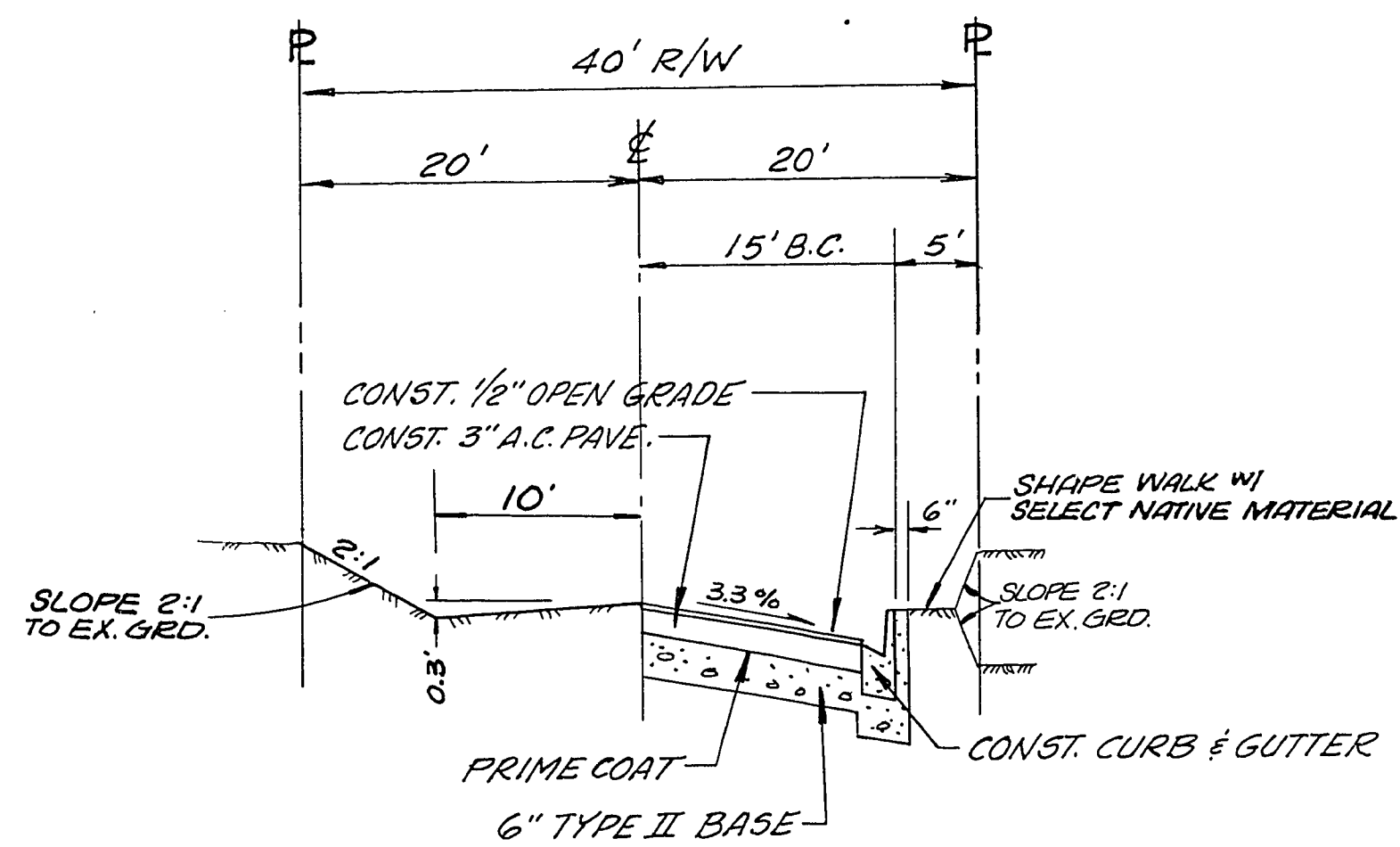
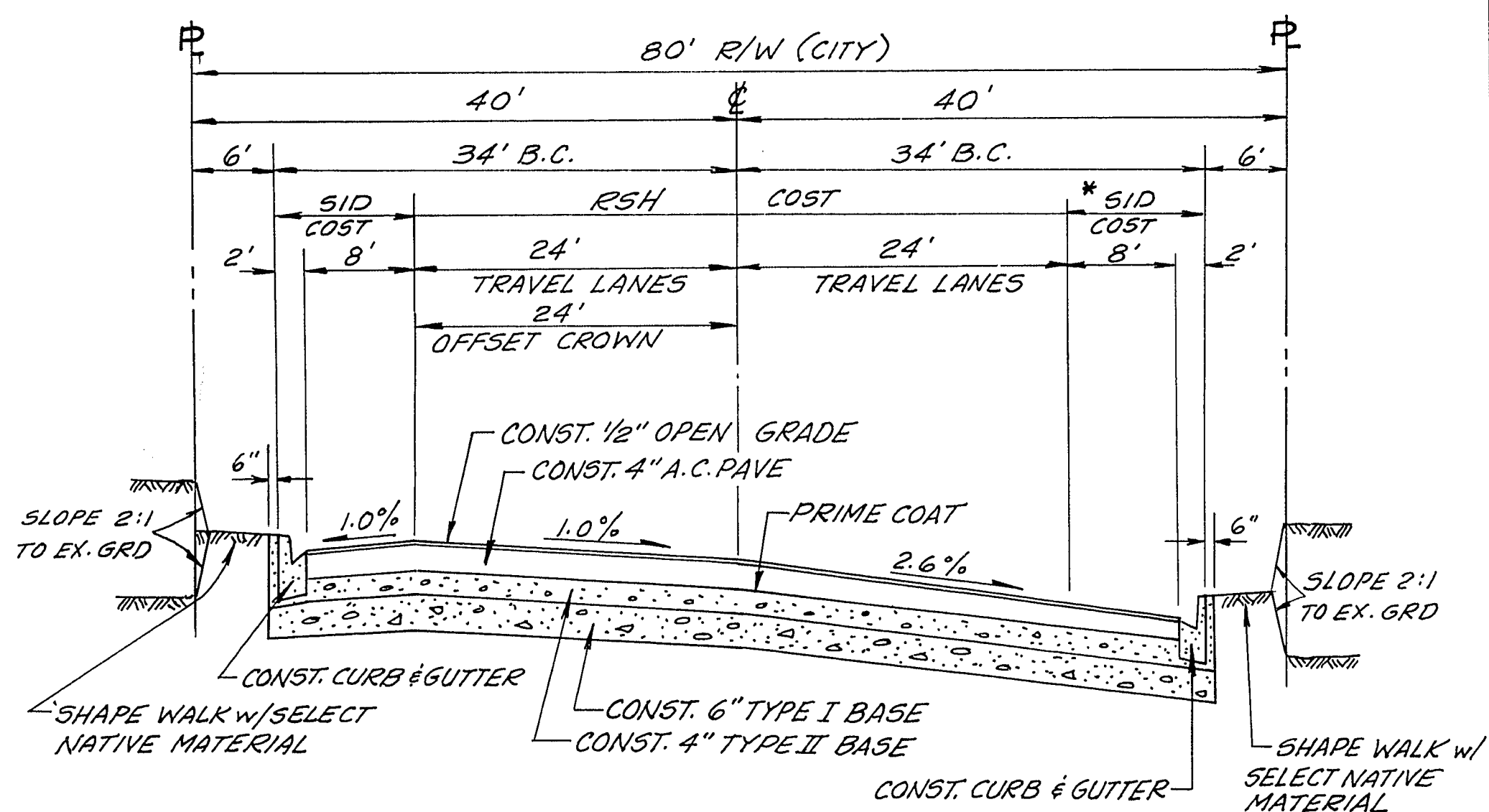


**"B" STA. 73+00 TO "B" STA. 74+70**  
**"B" STA. 77+28\* TO "B" STA. 78+20\***  
 \* STRUCTURAL SECTION ONLY THROUGH INTERSECTION

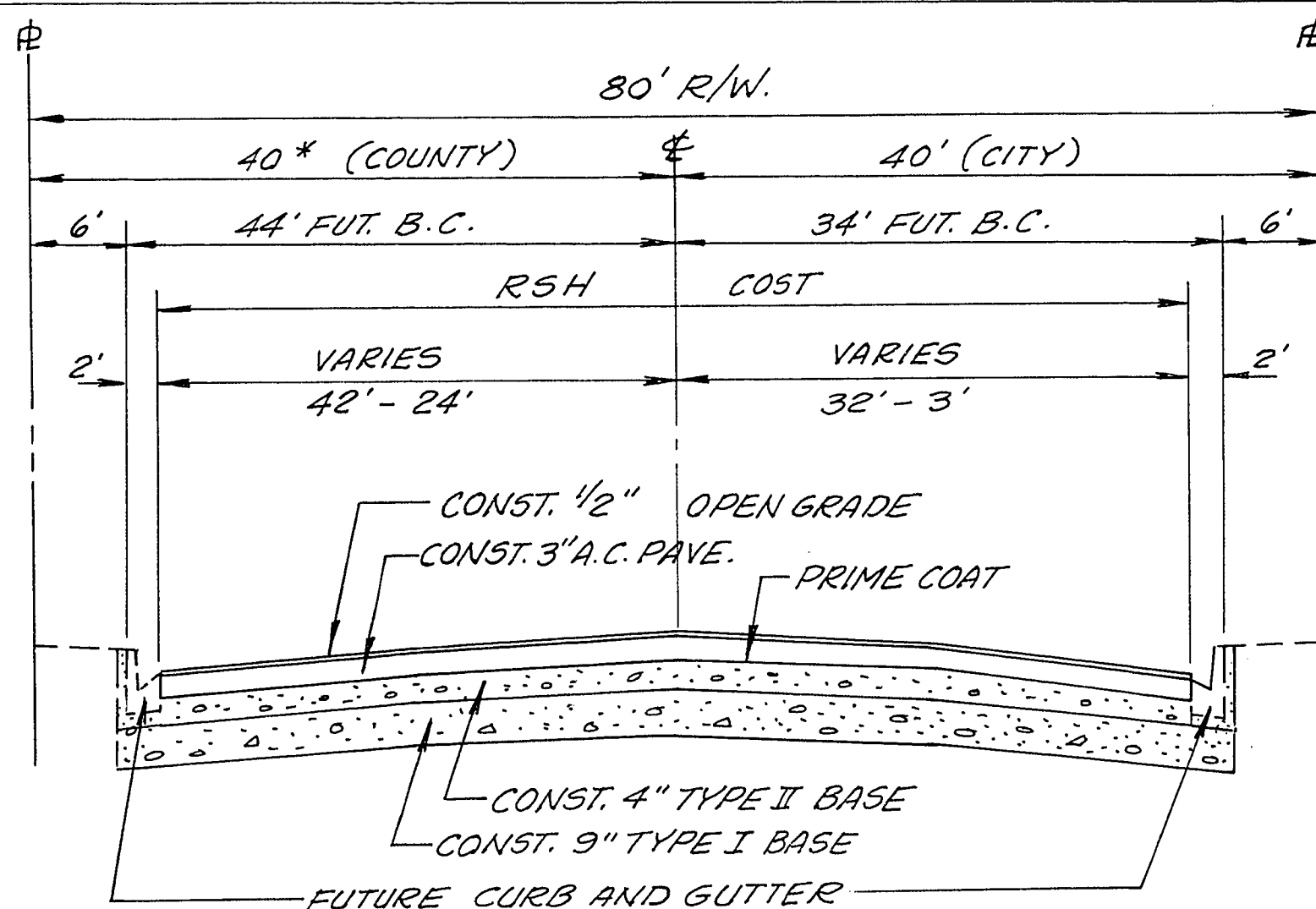


**ALLEY**  
**"C" STA. 94+87.97 TO "C" STA. 104+20.42**



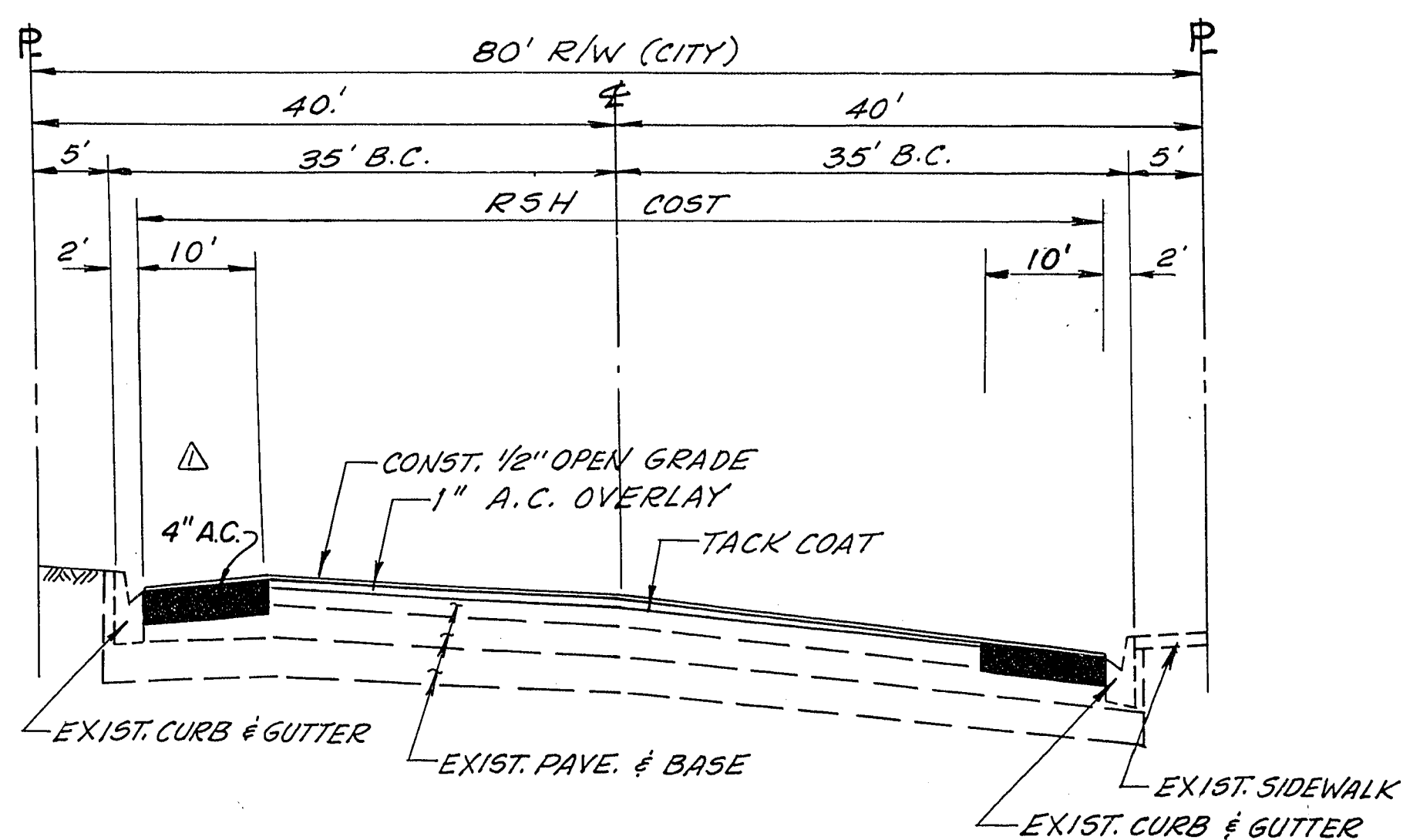
**Oakey Boulevard to Charleston Avenue**

"B" STA. 78+20 TO "B" STA. 104+18.33  
 \* "B" STA. 78+20 TO "B" STA. 95+81.50 = R.S.H. COST

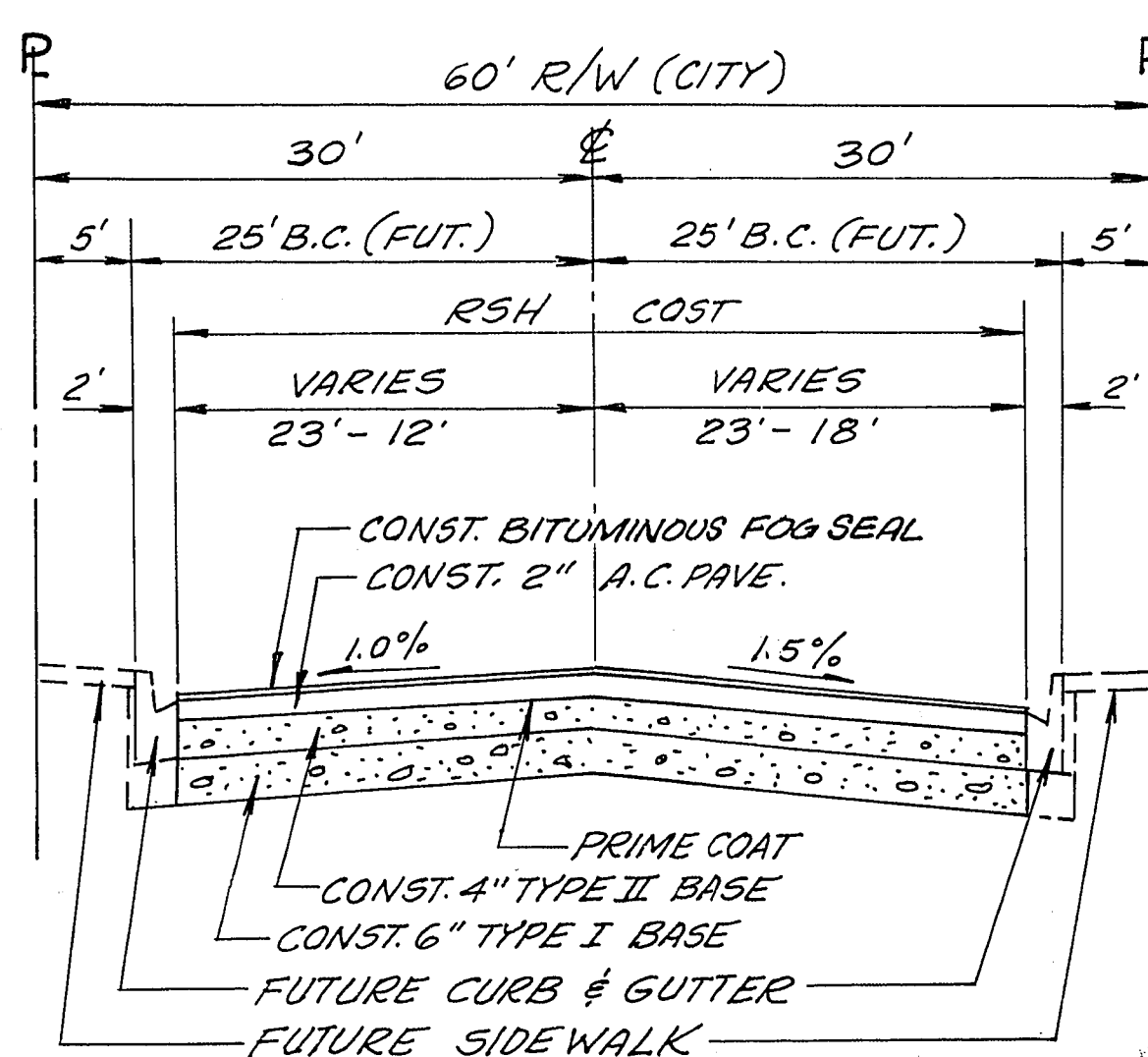


**DESERT INN ROAD**

\* 50' FUTURE R/W.



**"B" STA. 104+18.33 TO "B" STA. 105+78**



**MOUNTAIN VIEW BOULEVARD**

STA. -(0+38) TO STA. -(2+00)

OVERALL QUANTITY		ESTIMATE						
ITEM	DESCRIPTION	RSH	CC	CC-SID	CLV	CLV-SID	TOTAL	UNIT
121.124C	30"x19" LO HED RCP CLASS III	254					254	L.F.
121.118D	23"x14" LO HED R.C.P. CLASS III	124					124	L.F.
121.212C	12" RCP CLASS III	106					106	L.F.
121.218C	18" RCP CLASS III	908					908	L.F.
121.221C	21" RCP CLASS III	85					85	L.F.
121.224C	24" RCP CLASS III	82					82	L.F.
121.227C	27" RCP CLASS III	8					8	L.F.
121.230C	30" RCP CLASS III	106					106	L.F.
121.242C	42" RCP CLASS III *COST EXCEEDING 18" RCP	70					70	L.F.
340.041	TYPE "A" CONCRETE CURB	795					795	L.F.
125.108B	8" ASBESTOS CEMENT PIPE - CLASS 150					330	330	L.F.
560.22	FIRE HYDRANT INSTALLATION	1					1	EA.
200.110	CONCRETE REMOVAL	9533					9533	SF.
200.201	BUILDING REMOVAL	3					3	EA.
200.300	REMOVE TREES (4" TO 10")	49					49	EA.
200.400	REMOVE TREES (OVER 10")	20					20	EA.
201.100	EXCAVATION - UNCLASSIFIED	31402					31402	C.Y.
302.100	TYPE I GRAVEL BASE	8012		646		1182	9840	C.Y.
302.200	TYPE II GRAVEL BASE	8246		575		1324	10,145	C.Y.
331.002	1" A.C. OVERLAY	495					495	TON
331.004	2" A.C. OVERLAY	876					876	TON
333.100	BITUMINOUS FOG SEAL	80					80	GAL.
333.500	1/2" OPENGRADED PLANT MIX	84,522		4254		8168	96,944	S.Y.
334.004	2" A.C. PAVEMENT - SINGLE - LIFT	58					58	TON
334.006	3" A.C. PAVEMENT - SINGLE - LIFT	782					782	TON
334.008	4" A.C. PAVEMENT - SINGLE - LIFT	6286				1032	7318	TON
334.010	5" A.C. PAVEMENT - SINGLE - LIFT	10,707		1168		1029	12,904	TON
334.800	BITUMINOUS PRIME COAT	17,381		1063		1966	20,410	GAL.
334.903	1 1/2" A.C. DITCH & APRON	125					125	S.F.
334.905	1 1/2" A.C. SIDEWALK	1500					1500	S.F.
334.907	2 1/2" A.C. DRIVEWAY	8208					8208	S.F.
334.912	A.C. CURB	69		50		50	169	L.F.
340.014	CONCRETE "L" TYPE CURB & GUTTER (24" WIDE)	3787		3889		9096	16,772	L.F.
340.114	CONCRETE SIDEWALK	5582					5582	S.F.
340.216	RESIDENTIAL DRIVEWAYS	472					472	S.F.
340.226	COMMERCIAL DRIVEWAYS	900					900	S.F.
340.236	COMMERCIAL DEPRESSED CURB	80		360		386	826	L.F.
340.246	RESIDENTIAL DEPRESSED CURB	204					204	L.F.
340.319	VALLEY GUTTER	3498				781	4279	S.F.
340.326	ALLEY GUTTER			1228		174	1402	S.F.
340.144	4" ISLAND CONCRETE	1200					1200	S.F.
400.222	STREET LIGHT INSTALLATION	22		28		61	111	EA.
400.4512	RELOCATE STANDARD (STREET LIGHT)	3					3	EA.
420.000	SURVEY MONUMENTS				5		5	EA.
500.200	DROP INLET - TYPE I	13					13	EA.
500.207	DROP INLET - TYPE II	8					8	EA.
500.300	CURB OUTLET STRUCTURE	1			1		2	EA.
500.400	JUNCTION STRUCTURE - TYPE I & TYPE II	3					3	EA.
500.700	CONCRETE ENCASEMENT	1					1	L.S.
500.900	CONCRETE GRATED OUTLET STRUCTURE	2					2	EA.
512.500	ADJUST SANITARY SEWER MANHOLE	13			15		28	EA.
890.100	TRAFFIC SIGNAL INSTALLATION	2					2	EA.
890.103	TRAFFIC SIGNAL CONDUIT INSTALLATION-FUT.CONNECTION	1					1	L.S.
900.XXX	LOWER WATER LINE	2					2	EA.
999.100	CLEANING AND FINAL CLEAN UP	1					1	L.S.

CONTRACT  
 DRAWING  
 MAY 3 1974

SPECIAL	ABBREVIATIONS
ADJ.	ADJUSTMENT
BLDG.	BUILDING
BEG.	BEGIN
BLK.	BLOCK
CONTR.	CONTRACTOR
COR.	CORNER
C.G.	CURB AND GUTTER
DEP.	DEPRESSION
D.I.	DROP INLET
E.P.	EDGE OF PAVEMENT
F.F.	FROM
FUT.	FUTURE
FEN.	FENCE
F.G.	FINISH GRADE
F.F.	FINISH FLOOR
INV.	INVERT
INT.	INTERSECTION
IMP.	IMPROVEMENT
LT.	LEFT OR LIGHT
M.O.	MIDDLE ORDINATE
M.V.L.	MERCURY VAPOR LUMINAIRE
OHD.	OVERHEAD
P.R.V.C.	POINT OF REVERSE VERTICAL CURVE
P.R.V.	PRESSURE REDUCING VALVE
REPL.	REPLACE
REL.	RELOCATE
RELOC.	RELOCATE
REM.	REMOVE
RECONST.	RECONSTRUCT
RED' D	REDWOOD
S.I.D.	SPECIAL IMPROVEMENT DISTRICT
SW.	SIDEWALK
ST. LT.	STREET LIGHT
TRAF. SIG.	TRAFFIC SIGNAL
TOP OF CURB	TOP OF CURB
TELE.	TELEPHONE
UG.	UNDERGROUND
V.G.	VALLEY GUTTER
W.V.	WATER VALVE
W.M.	WATER METER
WD.	WOOD

**NOTE:**  
 ALL ABBREVIATIONS PER "UNIFORM STANDARD SPECIFICATIONS FOR PUBLIC WORKS CONSTRUCTION OFF-SITE IMPROVEMENTS, CLARK COUNTY AREA" SECTION 2. EXCEPT FOR SPECIAL ABBREVIATIONS SHOWN AT LEFT.

REV. DATE	DESCRIPTION	APP'D.
5-16-74	OMIT HEATER REMIX - ADD PAVE. ON	5/17/74
5-16-74	C.C. SID TO ALT. "B"	5/17/74
5-16-74	QUANTITY	5/17/74

**DELTA ENGINEERING INC.**  
 4239 W. SAHARA AVE.  
 LAS VEGAS, NEVADA  
 PHONE: (702) 876-0330

**VALLEY VIEW BLVD.**  
 SPRING MOUNTAIN ROAD TO CHARLESTON BOULEVARD  
 TYPICAL SECTION DETAILS, QUANTITIES, & ABBREVIATIONS

H. SCALE NONE	V. SCALE NONE	DES. D.P.	DWG. NO. 107-V926
W.O. NO. 11102	CHK'D.	DWN. E.C.	FILE NO.
APPROVED:	DATE	SHEET	5 OF 45

2149