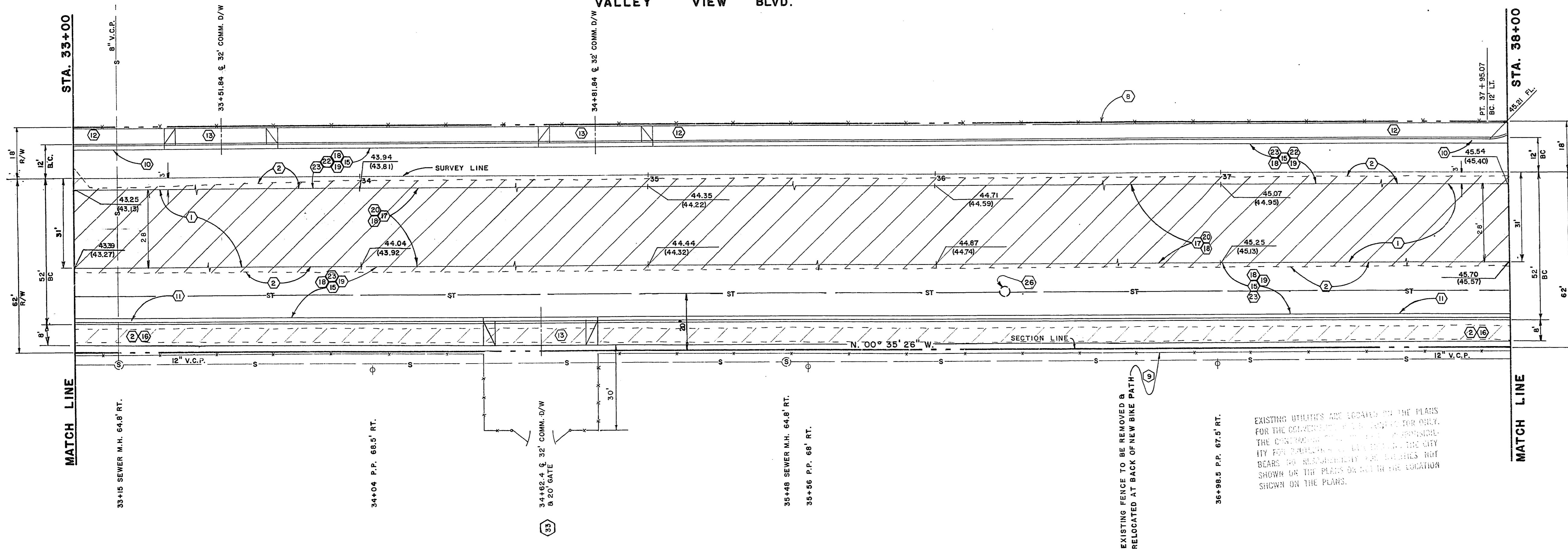
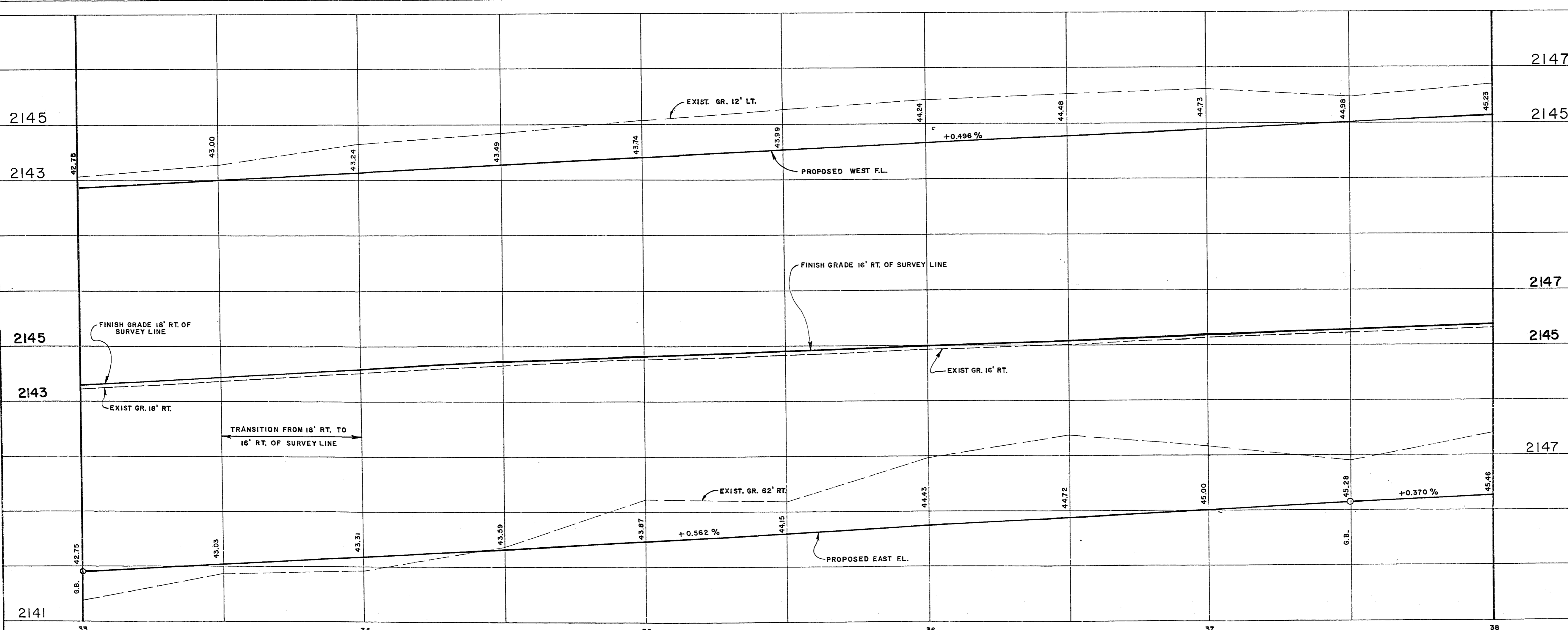


23-4-98

VALLEY VIEW BLVD.



APPROXIMATE QUANTITIES — THIS SHEET						
CONST. NOTE	ITEM NO.	DESCRIPTION	C.L.V.	S.I.D.	R.S.H	UNIT TOTAL
1		WHEEL CUT A.C. PAV'T.		1000		LF 1000
2		REMOVE A.C. PAV'T.		561		SY 561
	201.100	ROADWAY EXCAVATION		1625		CY 1625
		ROADWAY FILL TO SUBGRADE		143		CY 143
9	410.990	REMOVE & RELOCATE FENCE		500		LF 500
26	512.554	ADJUST STORM DRAIN M.H.		1		EA 1
10	340.014	CONST. 24" "L" TYPE CBG		420		LF 420
11	340.016	CONST. 24" "L" TYPE CBG 9"		500		LF 500
12	340.114	CONST 5' CONC. SIDEWALK		2100		SF 2100
13	340.226	CONST. CONC. COMM. D/W		960		SF 960
15	334.006	3" A.C. PAV'T.		314		TN 314
16	334.008	1/2" AC PAV'T. (BIKE PATH)		4.4		TN 4.4
20		TACK COAT		35		GAL 35
23	302.200	TYPE II GRAVEL BASE		264		CY 264
18	333.501	3/4" OPEN GRADE		3334		SY 3334
19		PRIME COAT		667		GAL 667
8	200.111	REMOVE FENCE		500		LF 500
35	410.320	20' DOUBLE C.L. GATE		1		EA 1
17	331.003	1-1/2" OVERLAY A.C.		150		TN 150



CONTRACT DRAWING
OCT. 28, 1977

NO.	DESCRIPTION	BY	DATE	APPROVALS
REVISIONS				

CITY OF LAS VEGAS NEVADA
DEPARTMENT OF PUBLIC SERVICES
ENGINEERING DESIGN DIVISION

**VALLEY VIEW BLVD.
W. CHARLESTON BLVD. TO W. FREMONT EXPWY.
STA. 33+00 TO STA. 38+00**

W.O. NO. 4221	F.B.K. NO. 75-5X	DATE	DRAWING NO.
SC. (H) 1" = 20'	SC. (V) 1" = 2'		107V-967
DES. C. KAJKOWSKI			FILE NO.
DR. S.J.A. & J.A.M.			

APPROVED BY DIRECTOR OF PUBLIC SERVICES: *[Signature]* 11/1/77

SHEET 10 OF 23