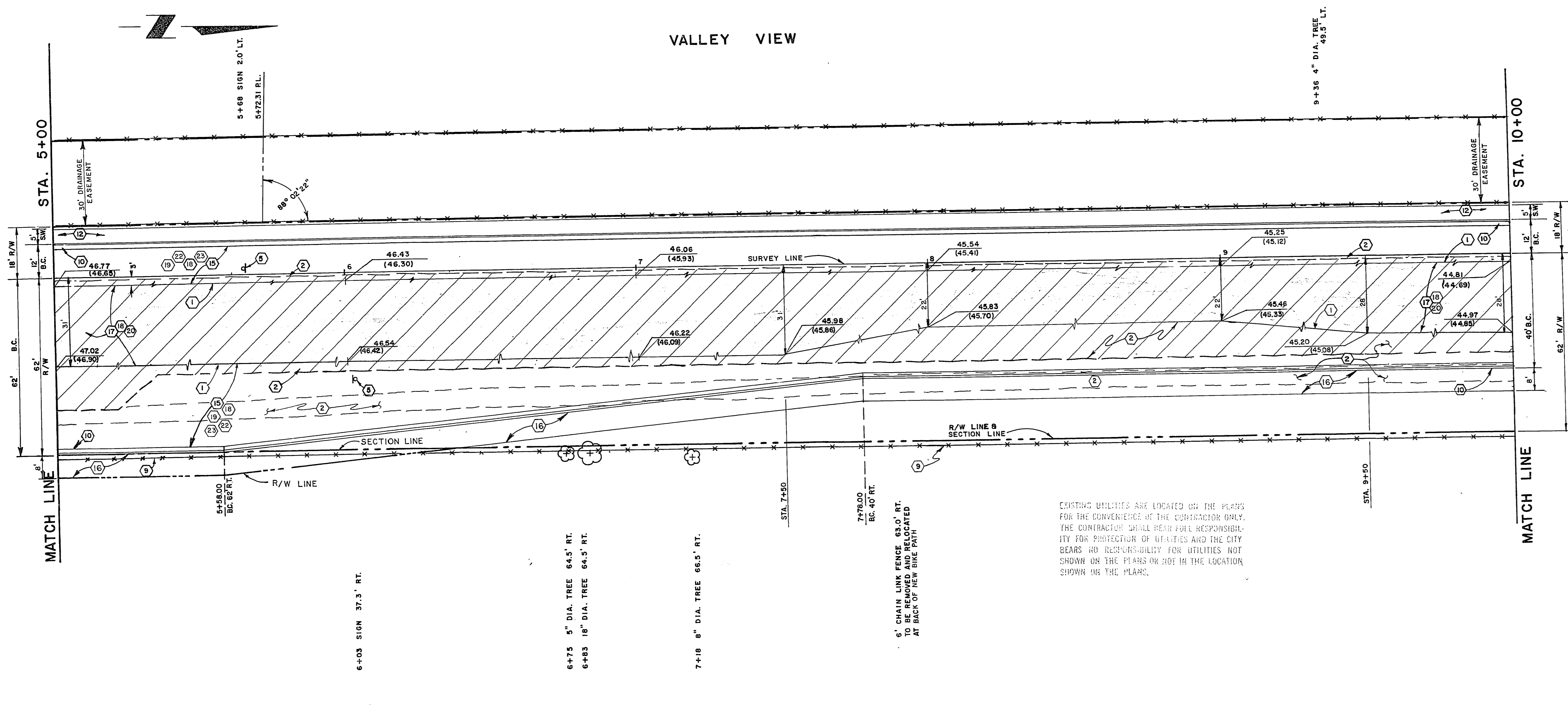


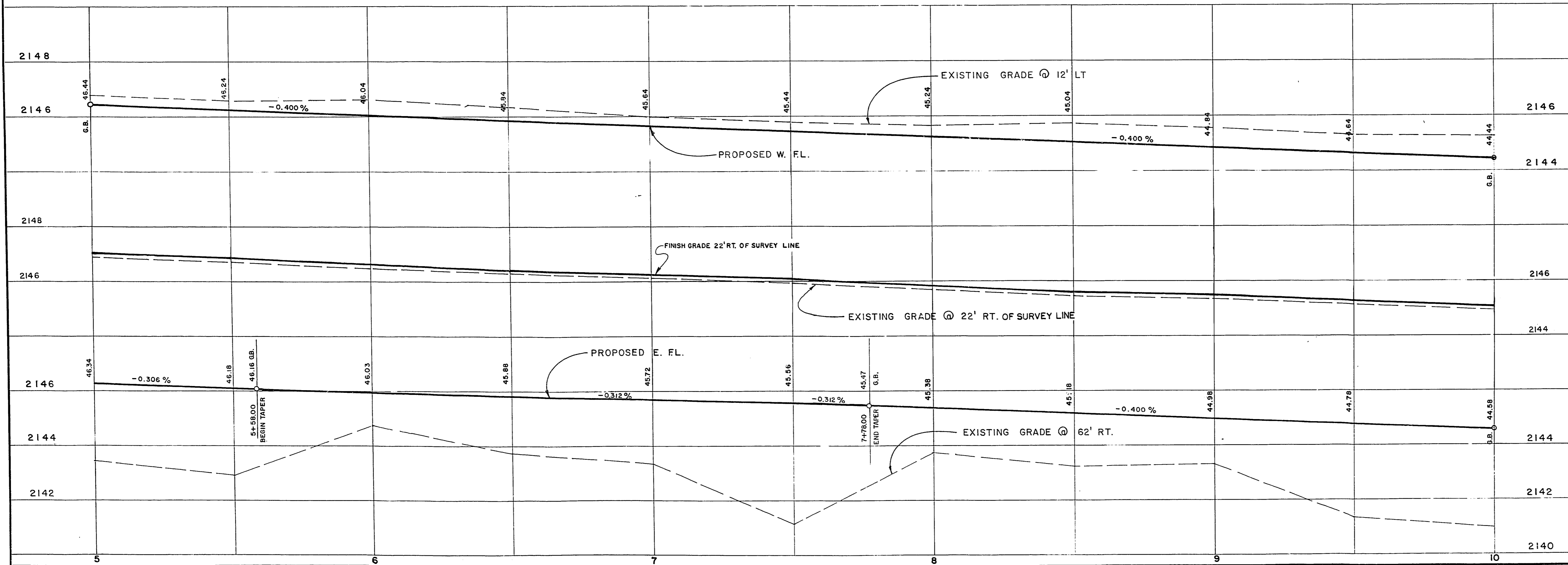
VALLEY VIEW



EXISTING UTILITIES ARE LOCATED ON THE PLANS FOR THE CONVENIENCE OF THE CONTRACTOR ONLY. THE CONTRACTOR SHALL BEAR FULL RESPONSIBILITY FOR PROTECTION OF UTILITIES AND THE CITY BEARS NO RESPONSIBILITY FOR UTILITIES NOT SHOWN ON THE PLANS OR NOT IN THE LOCATION SHOWN ON THE PLANS.

APPROXIMATE QUANTITIES THIS SHEET

ITEM	DESCRIPTION	C.L.V.	S.I.D.	R.S.H.	TOTAL	UNIT
(1)	REMOVE A.C. PAVEMENT	715			715	SY
(2)	WHEELCUT A.C. PAVEMENT	1002			1002	LF
(3)	TYPE I GRAVEL BASE	61			321	CY
(4)	TYPE II GRAVEL BASE	43			281	CY
(5)	3/4 IN. OPEN-GRADE PLANT MIX				3083	SY
(6)	1-1/2 IN. A.C. PAVEMENT (BIKE PATH)				43	TN
(7)	3 IN. A.C. PAVEMENT				327	TN
(8)	BITUMINOUS PRIME COAT				662	GAL
(9)	REMOVE & RELOCATE FENCE	1002			500	LF
(10)	24 IN. 'L' TYPE CURB & GUTTER	2500			1002	SF
(11)	CONCRETE SIDEWALK				2500	SF
(12)	1-1/2\"/>					



BY C.L.V. FORCES

Handwritten signature

CONTRACT DRAWING
OCT 28, 1977

NO. DESCRIPTIONS BY DATE APPROVAL

REVISIONS

CITY OF LAS VEGAS
CLARK COUNTY, NEVADA

Department of Public Services
Engineering Design Division

VALLEY VIEW BLVD.
WEST CHARLESTON BOULEVARD
TO WEST FREMONT EXPRESSWAY

STA 5+00 TO STA. 10+00

scale (h) 1" = 20' scale (v) 1" = 2' drawing no. 107V-967
w.o.no. 7704 f.bk.no. 75-5X
design by C. KAJKOWSKI drawn by S.J.A. & J.A.M. date
approved by Director of Public Services date 11/27/77 sht. 4 of 23