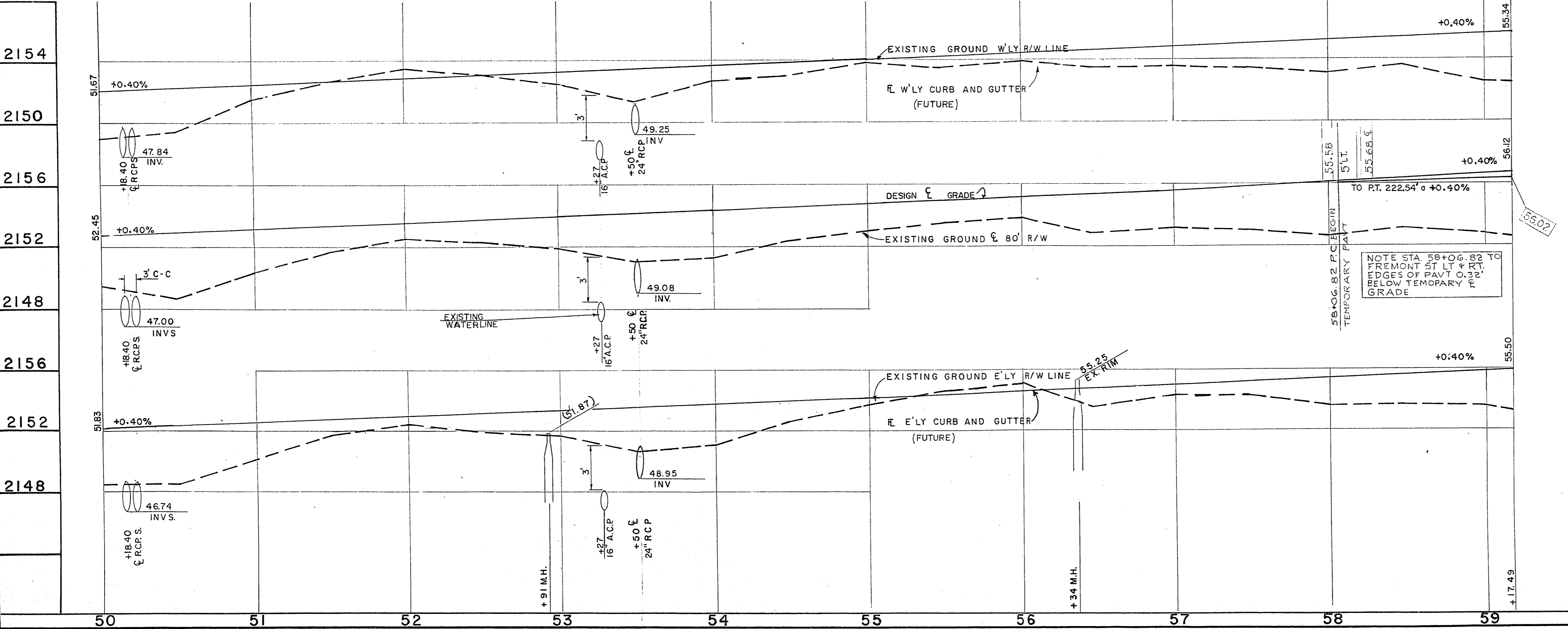
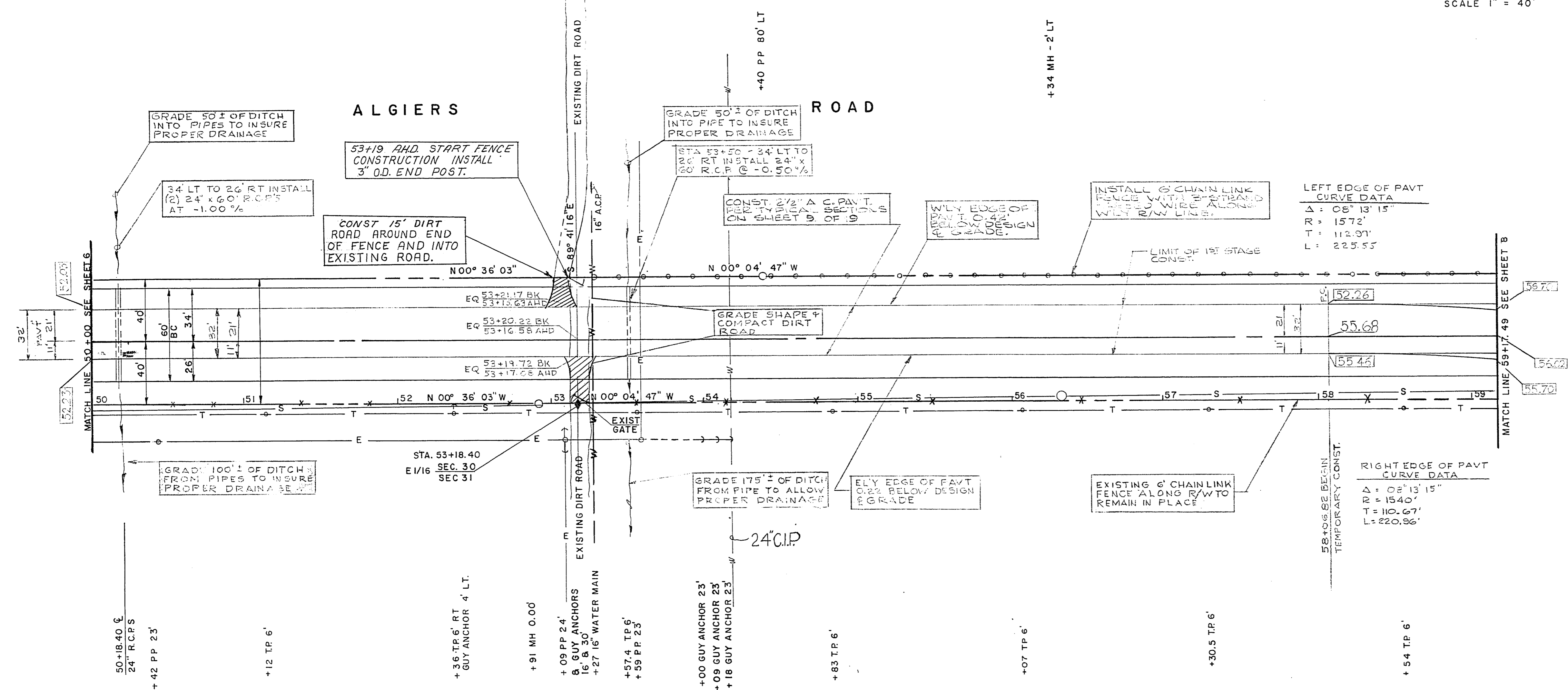


APPROXIMATE QUANTITIES - THIS SHEET

ITEM	DESCRIPTION	UNIT	QUANTITY
201.1	ROADWAY EXCAVATION	C.Y.	
302.1A	TYPE I GRAVEL EMBANKMENT	C.Y.	1190
302.1B	TYPE I GRAVEL BASE	C.Y.	889
302.2	TYPE II GRAVEL BASE	C.Y.	395
334.5	2 1/2" ASPHALT CONCRETE PAVT	S.Y.	3556
333.1	BITUMINOUS FOG SEAL COAT	S.Y.	3556
410.1	INSTALL 6" CHAINLINK FENCE	L.F.	595
121.224	INSTALL 24" R.C.P.	L.F.	180



2154				
2150				
2156				
2152				
2148				
2156				
2152				
2148				

APPROVED
 DATE
 7/2/63
 1/12/20
 2/18/44
 1/16
 1/16

REVISION NO.	DESCRIPTION	BY	DATE	APPROVAL
1	BASE THICKNESS CHANGED	EL		

CITY OF LAS VEGAS NEVADA
 DEPARTMENT OF PUBLIC WORKS
 SERVICES DIVISION

ALGIERS ROAD
CHARLESTON BLVD-WEST-FREMONT ST.

W.O. NO. 7070 F.B.K. NO. 59-3X, 66-7X DATE DRAWING NO.
 SC. (H) 1" = 40' SC. (V) 1" = 4' 107V-604B

DES. E. LOUVIERE FILE NO.
 DR. G. LANGE J.M.C.
 APPROVED BY DIRECTOR OF PUBLIC WORKS

SHEET 7 OF 9