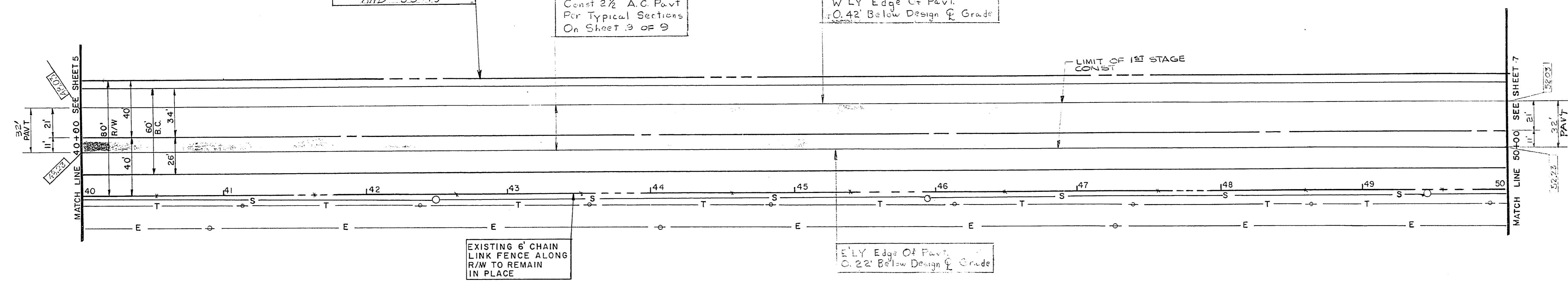


ALGIERS ROAD

NOTE: NO FENCE TO BE INSTALLED BETWEEN STA 39+82 AND 33+19

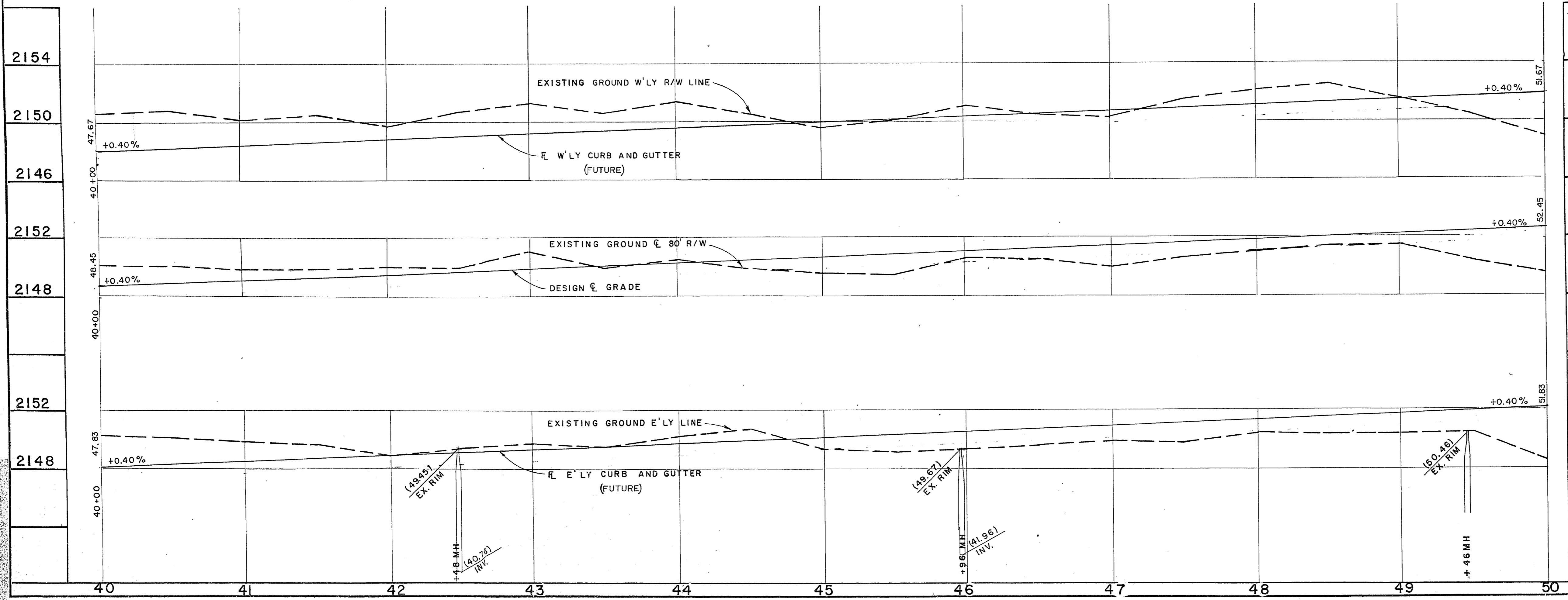
Const 2 1/2" A.C. Pavt Per Typical Sections On Sheet 3 OF 9

W'LY Edge Of Pavt 0.42' Below Design G. Grade



EXISTING 6' CHAIN LINK FENCE ALONG R/W TO REMAIN IN PLACE

E'LY Edge Of Pavt 0.22' Below Design G. Grade



APPROXIMATE QUANTITIES - THIS SHEET

ITEM	DESCRIPTION	UNIT	QUANTITY
201.1	ROADWAY EXCAVATION	CY	
302.1A	TYPE I GRAVEL EMBANKMENT	CY	21
302.1B	TYPE I GRAVEL BASE	CY	889
302.2	TYPE II GRAVEL BASE	CY	395
334.5	2 1/2" ASPHALT CONC. PAVT	S.Y.	3556
333.1	BITUMINOUS FOG SEAL COAT	S.Y.	3556

NO.	DATE	BY	DESCRIPTION
1	12/20/67	KSH	REVISION
2	2-18-68	W	REVISION
3	1-17-69	W	REVISION

2154	2154				
2150	2150				
2146	2146				
2152	2152				
2148	2148				
2152	2152	1	BASE THICKNESS CHANGED	EL	W
2148	2148				

REVISIONS

CITY OF LAS VEGAS NEVADA  
DEPARTMENT OF PUBLIC WORKS  
SERVICES DIVISION

ALGIERS ROAD  
CHARLESTON BLVD.-WEST FREMONT ST.

W.O. NO. 7070	F.B.K. NO. 59-3X, 66-7X	DATE	DRAWING NO.
SC. (H) 1" = 40'	SC. (V) 1" = 4'	4-10-68	107-V604B
DES. LOUVIERE	DR. LANGE J.M.C.	4-10-68	FILE NO.
APPROVED BY DIRECTOR OF PUBLIC WORKS			SHEET 6 OF 9

6-4-68