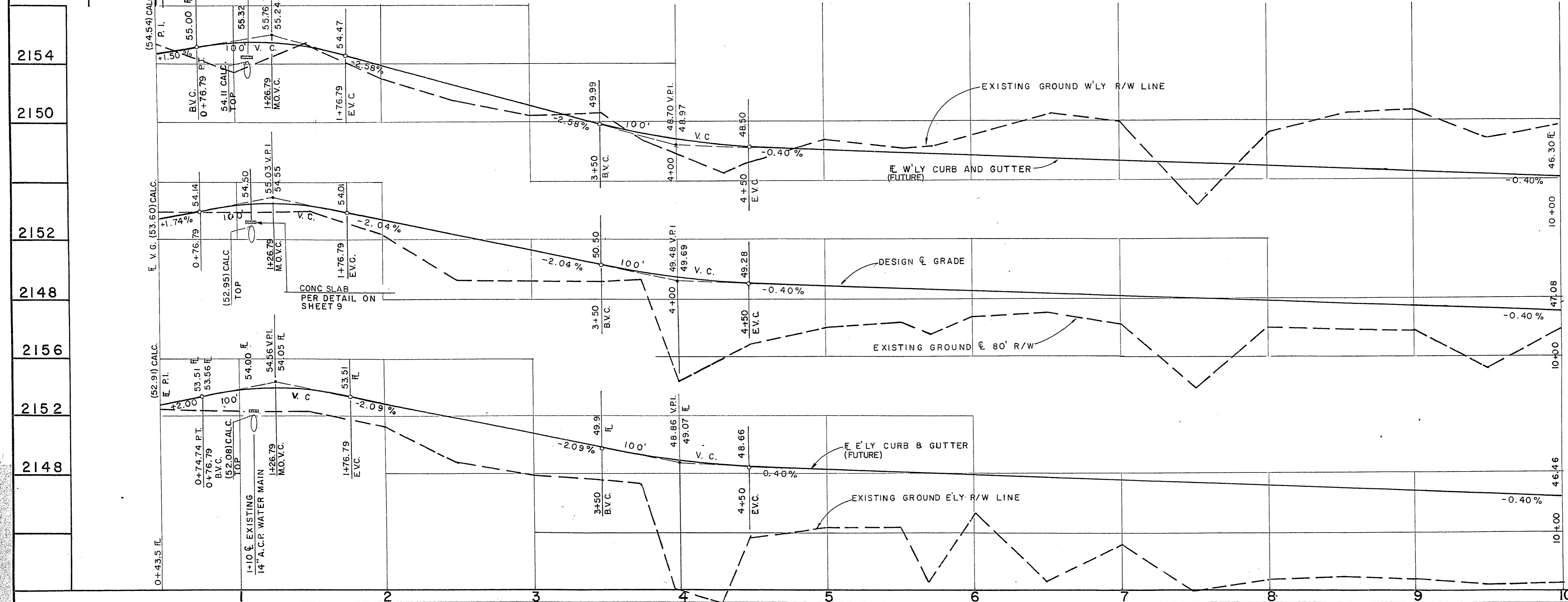
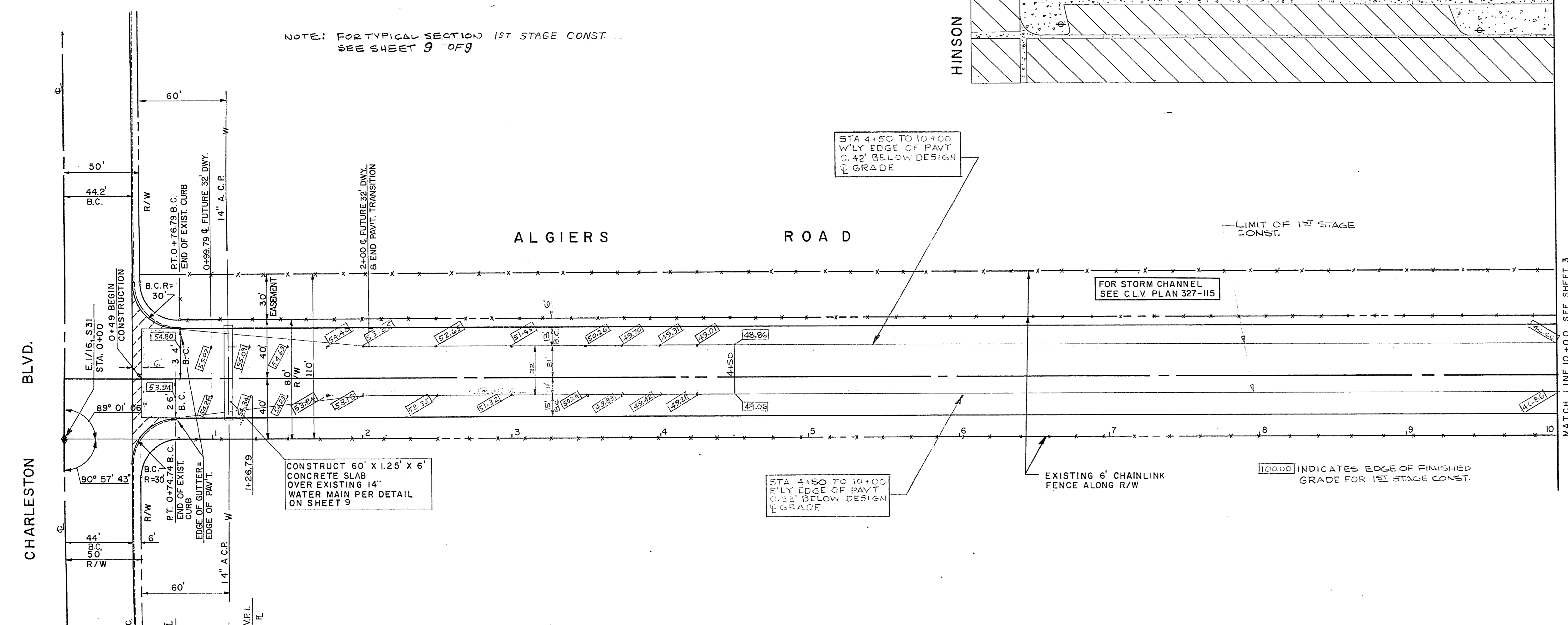
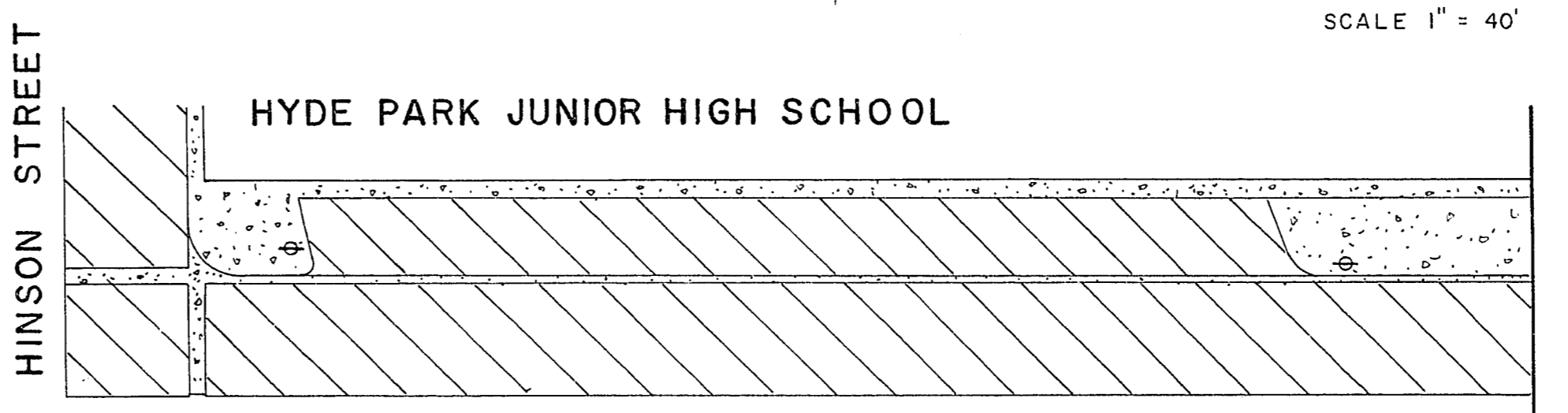


SCALE 1" = 40'

APPROXIMATE QUANTITIES - THIS SHEET

ITEM	DESCRIPTION	UNIT	QUANTITY
201.1	ROADWAY EXCAVATION	C.Y.	
302.1A	TYPE I GRAVEL EMBANKMENT	C.Y.	
302.1B	TYPE I GRAVEL BASE	C.Y.	305
302.2	TYPE II GRAVEL BASE	C.Y.	402
334.5	2 1/2" ASPHALT CONCRETE PAVEMENT	S.Y.	3618
333.1	BITUMINOUS FOG SEAL COAT	S.Y.	3618

NOTE: FOR TYPICAL SECTION 1ST STAGE CONST. SEE SHEET 9 OF 9



2154	2150	2146	2148	2144	2148	2144
------	------	------	------	------	------	------

APPROVED

DATE	BY	USE
12/20/68	RJA	DESIGN
12/20	KSA	ENGR
12/20/68	RJA	FIELD
12/20/68	RJA	REVISION
12/20/68	RJA	REVISION
12/20/68	RJA	REVISION
12/20/68	RJA	REVISION

REVISIONS

REVISION NO.	DESCRIPTION	BY	DATE	APPROVAL

CITY OF LAS VEGAS NEVADA
 DEPARTMENT OF PUBLIC WORKS
 SERVICES DIVISION

ALGIERS ROAD
CHARLESTON BLVD - WEST FREMONT ST.

W.O. NO. 7070	F.BK. NO. 59-3X, 66-7X	DATE	DRAWING NO.
SC. (H) 1" = 40'	SC. (V) 1" = 4'	4-9-68	107V-604B
DES. LOUVIERE	DR. LANGE	4-9-68	FILE NO.
APPROVED BY DIRECTOR OF PUBLIC WORKS			SHEET 2 OF 9

R. Louvier