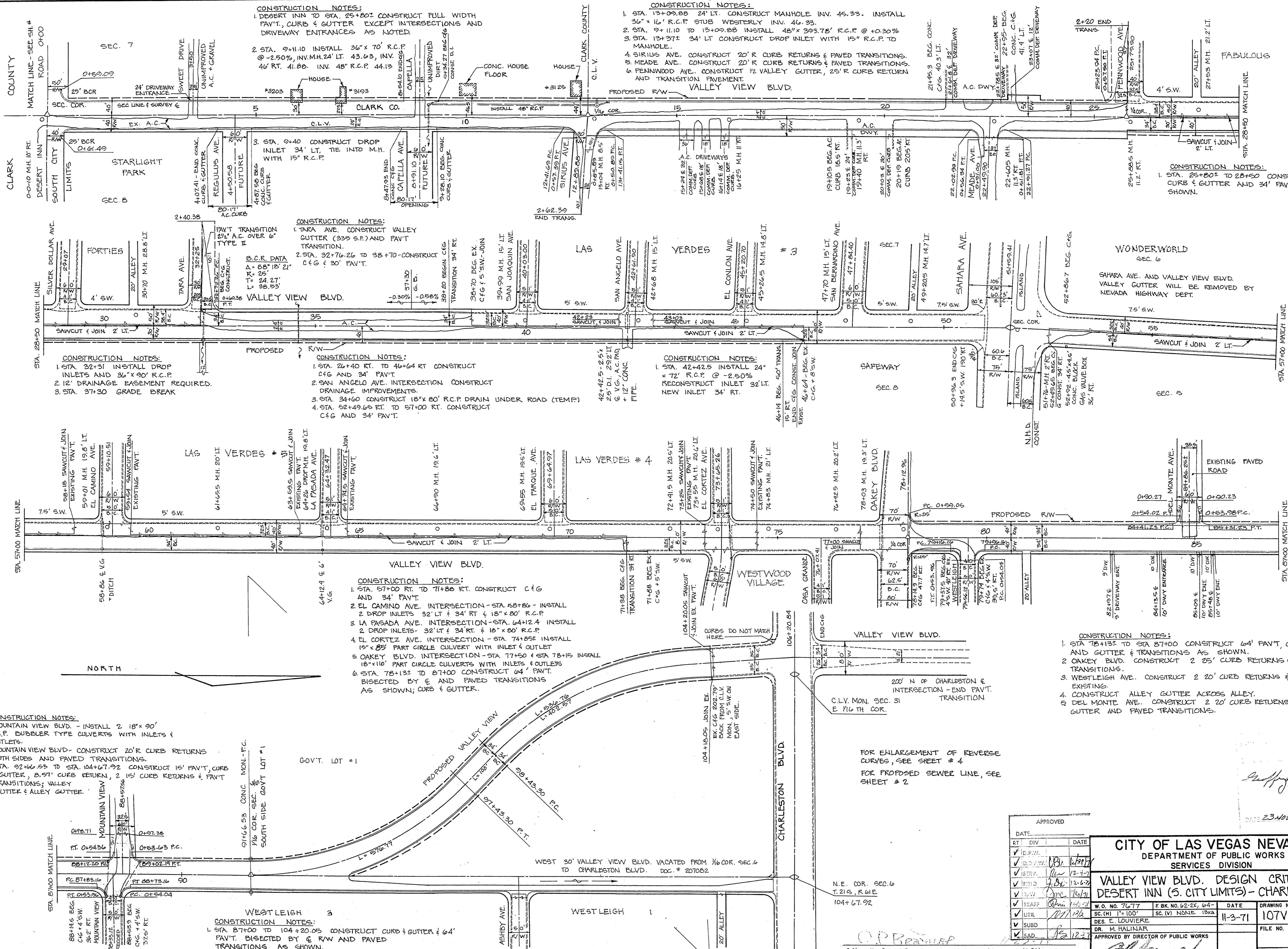


SEC. 18

SEC. 17



CONSTRUCTION NOTES:
 1. DESERT INN TO STA 25+80.1 CONSTRUCT FULL WIDTH PAV'T, CURB & GUTTER EXCEPT INTERSECTIONS AND DRIVEWAY ENTRANCES AS NOTED.
 2. STA. 9+11.10 INSTALL 36" x 70' R.C.P. @ -2.50% INV. M.H. 24' LT. 43.63, INV. 46' RT. 41.86. INV. 48' R.C.P. 44.13

CONSTRUCTION NOTES:
 1. STA. 13+09.88 24' LT. CONSTRUCT MANHOLE INV. 45.33. INSTALL 36" x 16' R.C.P. STUB WESTERLY INV. 46.33.
 2. STA. 9+11.10 TO 13+09.88 INSTALL 48" x 39.78' R.C.P. @ +0.30%
 3. STA. 13+37.1 34' LT CONSTRUCT DROP INLET WITH 15" R.C.P. TO MANHOLE.
 4. SIRIUS AVE. CONSTRUCT 20' R CURB RETURNS & PAVED TRANSITIONS.
 5. MEADE AVE. CONSTRUCT 20' R CURB RETURNS & PAVED TRANSITIONS.
 6. PENNWOOD AVE. CONSTRUCT 1/2 VALLEY GUTTER, 25' R CURB RETURN AND TRANSITION PAVEMENT.

CONSTRUCTION NOTES:
 1. STA. 25+80.1 TO 28+50 CONSTRUCT CURB & GUTTER AND 34' PAV'T AS SHOWN.

CONSTRUCTION NOTES:
 1. STA. 32+31 INSTALL DROP INLETS AND 36" x 90' R.C.P.
 2. 12' DRAINAGE EASEMENT REQUIRED.
 3. STA. 37+30 GRADE BREAK

CONSTRUCTION NOTES:
 1. TARA AVE. CONSTRUCT VALLEY GUTTER (335 S.F.) AND PAV'T TRANSITION.
 2. STA. 32+76.26 TO 38+70 CONSTRUCT C&G & 30' PAV'T.

CONSTRUCTION NOTES:
 1. STA. 42+42.5 INSTALL 24" x 72' R.C.P. @ -2.50% RECONSTRUCT INLET 32' LT. NEW INLET 34' RT.

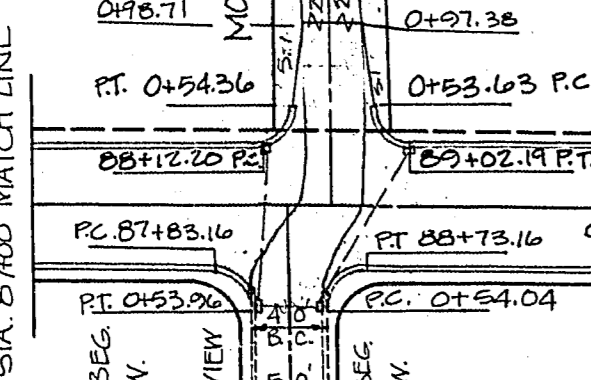
CONSTRUCTION NOTES:
 1. STA. 57+00 RT. TO 71+88 RT. CONSTRUCT C&G AND 34' PAV'T.
 2. EL CAMINO AVE. INTERSECTION - STA. 58+86 - INSTALL 2 DROP INLETS 32' LT & 34' RT & 18" x 80' R.C.P.
 3. LA PASADA AVE. INTERSECTION - STA. 64+24.4 INSTALL 2 DROP INLETS - 32' LT & 34' RT & 18" x 80' R.C.P.
 4. EL CORTEZ AVE. INTERSECTION - STA. 74+85.1 INSTALL 15" x 85' PART CIRCLE CULVERT WITH INLET & OUTLET
 5. OAKLEY BLVD. INTERSECTION - STA. 77+50 & STA. 78+15.1 INSTALL 18" x 110' PART CIRCLE CULVERTS WITH INLETS & OUTLETS
 6. STA. 78+13.1 TO 87+00 CONSTRUCT 64' PAV'T. BISECTED BY E AND PAVED TRANSITIONS AS SHOWN; CURB & GUTTER.

CONSTRUCTION NOTES:
 1. STA 78+13.1 TO STA 87+00 CONSTRUCT 64' PAV'T, CURB AND GUTTER & TRANSITIONS AS SHOWN.
 2. OAKLEY BLVD. CONSTRUCT 2 25' CURB RETURNS & PAVED TRANSITIONS.
 3. WESTLEIGH AVE. CONSTRUCT 2 20' CURB RETURNS & MATCH EXISTING.
 4. CONSTRUCT ALLEY GUTTER ACROSS ALLEY.
 5. DEL MONTE AVE. CONSTRUCT 2 20' CURB RETURNS, VALLEY GUTTER AND PAVED TRANSITIONS.

CONSTRUCTION NOTES:
 1. MOUNTAIN VIEW BLVD. - INSTALL 2 18" x 90' R.C.P. BUBBLER TYPE CULVERTS WITH INLETS & OUTLETS.
 2. MOUNTAIN VIEW BLVD - CONSTRUCT 20' R CURB RETURNS BOTH SIDES AND PAVED TRANSITIONS.
 3. STA. 92+66.93 TO STA. 104+67.92 CONSTRUCT 15' PAV'T, CURB & GUTTER, 8.57' CURB RETURN, 2 15' CURB RETURNS & PAV'T TRANSITIONS; VALLEY GUTTER & ALLEY GUTTER.

CONSTRUCTION NOTES:
 1. STA. 87+00 TO 104+20.05 CONSTRUCT CURB & GUTTER & 64' PAV'T. BISECTED BY E R/W AND PAVED TRANSITIONS AS SHOWN.

FOR ENLARGEMENT OF REVERSE CURVES, SEE SHEET # 4
 FOR PROPOSED SEWER LINE, SEE SHEET # 2



CONSTRUCTION NOTES:
 1. STA. 87+00 TO 104+20.05 CONSTRUCT CURB & GUTTER & 64' PAV'T. BISECTED BY E R/W AND PAVED TRANSITIONS AS SHOWN.

APPROVED	
DATE	DATE
✓	12/17/71
✓	12/17/71
✓	12/17/71
✓	12/17/71
✓	12/17/71
✓	12/17/71
✓	12/17/71
✓	12/17/71
✓	12/17/71
✓	12/17/71

CITY OF LAS VEGAS NEVADA
 DEPARTMENT OF PUBLIC WORKS
 SERVICES DIVISION

VALLEY VIEW BLVD. DESIGN CRITERIA
 DESERT INN (S. CITY LIMITS) - CHARLESTON

W.O. NO. 76-77	F.B.K. NO. 62-26, 64-	DATE	DRAWING NO.
SC.(H) 1"=100'	SC.(V) NONE	11-3-71	107V-604C
DES. E. LOUVIERE		FILE NO.	
DR. M. HALINAR		APPROVED BY DIRECTOR OF PUBLIC WORKS	
CH. BRECHLER, MANAGING ENGINEER R.S.H. DATE		SHEET 1 OF 7	

6-4-50