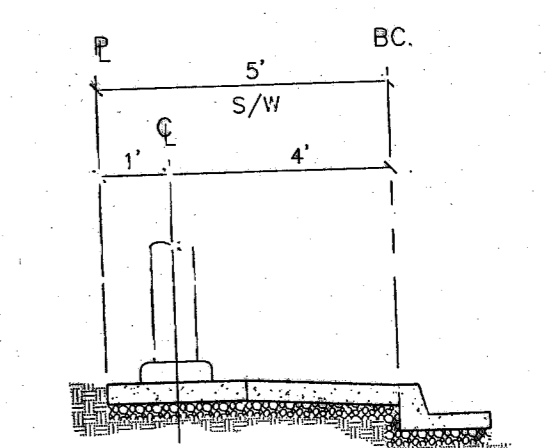
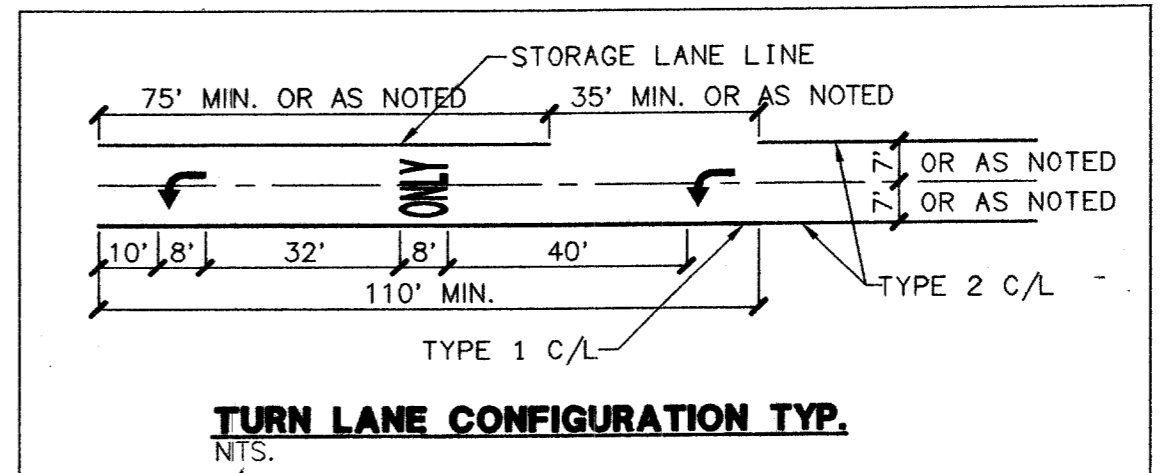


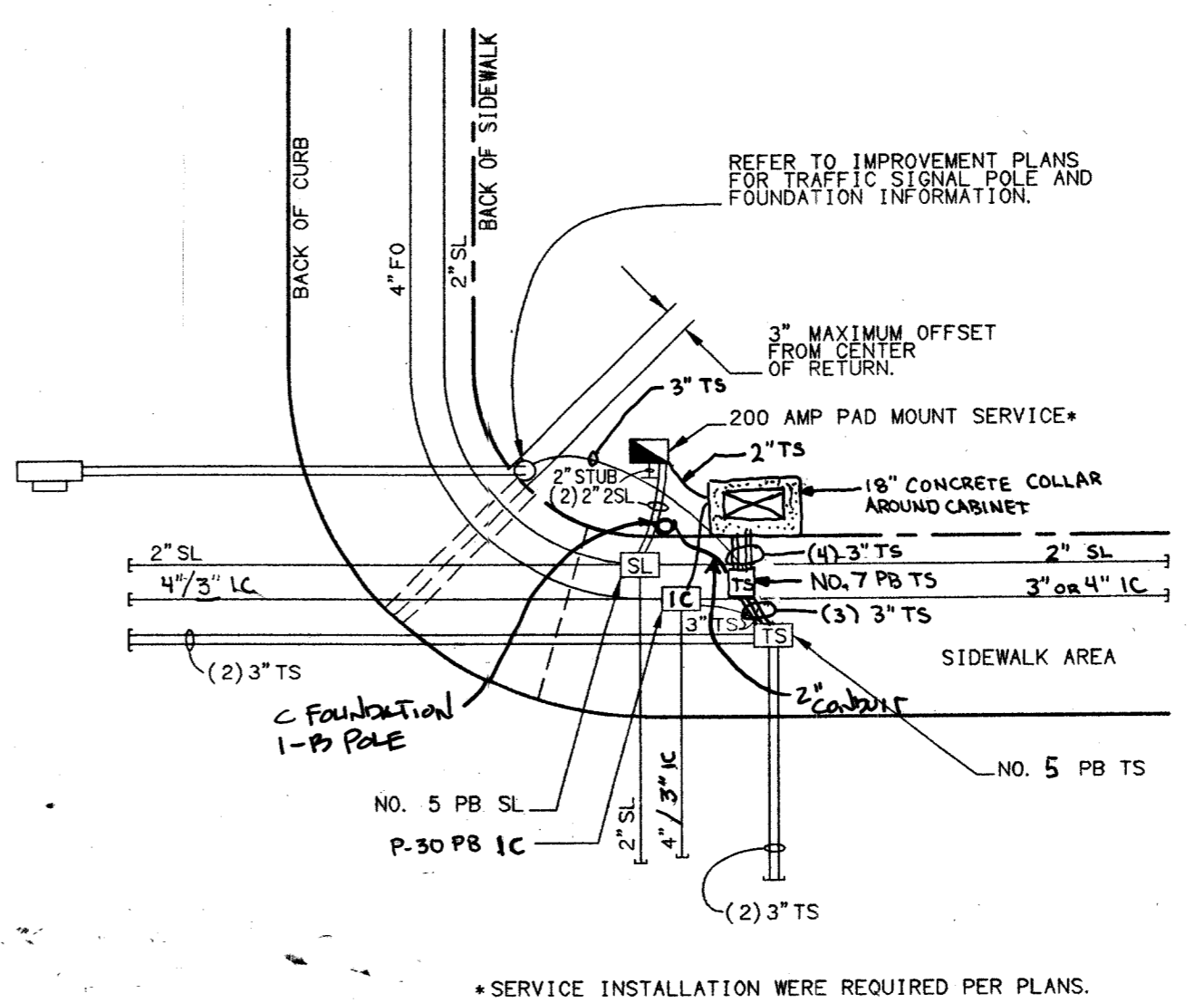
TRAFFIC DELINEATION AND SIGNAGE NOTES

- (A) INSTALL YELLOW TYPE 1 CENTERLINE DELINEATION PER USD #244
- (B) INSTALL YELLOW TYPE 2 CENTERLINE DELINEATION PER USD #244
- (C) INSTALL 4" WHITE PAINTED EDGELINE
- (D) INSTALL (24"x24") R8-3A "NO PARKING" SIGNS
- (E) INSTALL 36" R1-1 "STOP" SIGN WITH (2) 12" D3 "STREET NAME" SIGNS
- (F) INSTALL 30" R1-1 "STOP" SIGN WITH (2) 9" D3 "STREET NAME" SIGNS
- (G) INSTALL TYPE III BARRICADES STANDARD DESIGN PER USD. DWG. #801 W/ W1-6 ARROW SIGN
- (H) INSTALL CONCRETE BARRIER PER USD. DWG. #802
- (I) INSTALL 9" (2) D3 "STREET NAME" SIGNS
- (J) INSTALL 30"x30" R3-7R "RIGHT LANE MUST TURN RIGHT" SIGN
- (K) INSTALL WHITE TURN STORAGE LANE LINE PER USD #246
- (L) INSTALL "ARROWS & ONLY" PAVEMENT MARKINGS WITH WHITE COLD POLYMER FILM PER USD #246. SEE TYPICAL SPACING DETAIL ON THIS SHEET.
- (M) INSTALL 6" WHITE PAINTED EDGE LINE.
- (N) INSTALL 12" (2) D3 "STREET NAME" SIGNS
- (O) INSTALL BLUE COLORED REFLECTIVE RAISED PAVEMENT MARKERS ADJACENT TO THE FIRE HYDRANT. SEE NOTE BELOW.



STREET LIGHT DETAIL
(PUBLIC STREET) N.T.S.
STREETLIGHT NOTE:
ALL HAND HOLE COVERS MUST BE INSTALLED.
POLE CAPS NEEDED, AND BOLL BOX LIDS BOLTED DOWN PRIOR TO ENERGIZING CIRCUIT.
ALL WIRE MUST HAVE THE INSULATION.

FIRE HYDRANT MARKER NOTE
BLUE COLORED REFLECTIVE RAISED PAVEMENT MARKERS ARE TO BE INSTALLED:
1. ON ROADWAYS WITH NO PARKING PERMITTED ON HYDRANT SIDE; LOCATED MARKER 8" FROM FACE OF CURB ON HYDRANT SIDE.
2. ON ROADWAYS WITH PARKING PERMITTED ON HYDRANT SIDE; LOCATED MARKER 16" FROM FACE OF CURB ON HYDRANT SIDE.



*SERVICE INSTALLATION WERE REQUIRED PER PLANS.

TRAFFIC SIGNAL UNDERGROUND DETAIL

STREET LIGHT & SIGNAGE LEGEND

100 WATT H.P.S. (PRIVATE)	16 EA.
150 WATT H.P.S. (PUBLIC)	10 EA.
250 WATT H.P.S. (PUBLIC)	3 EA.
400 WATT H.P.S. (PUBLIC)	1 EA.
1 1/4" ST. LT. CONDUIT	2575 LF
1 POLE 40 AMP CIRCUIT BREAKER/S	2370 LF
2" ST. LT. CONDUIT	
3" FIBER OPTIC CONDUIT	1577 LF
3 1/2" PULLBOX (PUBLIC)	4 EA.
125 AMP SERVICE PEDASTAL	1 EA.
R1-1 "STOP" SIGN & (2) D3 "STREET NAME" SIGNS	4 EA.
(2) D3 "STREET NAME" SIGNS	3 EA.

200 AMP 240V PAD MOUNT SERVICE WITH (TYP.)

2 2 POLE 60 AMP CIRCUIT BREAKER/S
2 1 POLE 15 AMP CIRCUIT BREAKER/S
1 POLE 40 AMP CIRCUIT BREAKER/S
1 POLE 60 AMP CIRCUIT BREAKER/S
2 2 POLE 60 AMP CONTACTOR/S

BENCHMARK
PROJECT DATUM: NAVD83
CITY OF LAS VEGAS BENCHMARK: 84W115NE6
NAVD83 ELEVATION: 873.9310 METERS (2866.89 FEET)
RIVET AND PLATE IN CONCRETE CYLINDER AT THE SOUTHWEST CORNER OF HUALAPAI AND GILCREASE

BASIS OF BEARING
THE BASIS OF BEARINGS FOR THIS PROJECT IS SOUTH 89°11'31" EAST BEING THE NORTH LINE OF THE NORTHWEST QUARTER (NW 1/4) OF THE NORTHWEST QUARTER (NW 1/4), SECTION 18, TOWNSHIP 19 SOUTH, RANGE 60 EAST, M.D.M., CLARK COUNTY, NEVADA, AS SHOWN ON A RECORD OF SURVEY ON FILE IN THE CLARK COUNTY, NEVADA RECORDER'S OFFICE IN FILE 123 AT PAGE 32.

Call before you Overhead 1-702-227-2929 69141

Call before you Dig 1-800-227-2600

Underground Utility

7	6	5	4	3	2	1	REV	DATE	BY

PERMA-BILT HOMES
CITY OF LAS VEGAS, NEVADA
7150 POLLOCK DRIVE, SUITE 104
LAS VEGAS, NEVADA 89119
(702) 886-9100

TRAFFIC PLAN
STREET LIGHT PLAN
VALLEY CREST II WEST

nv
nevada CONSULTING ENGINEERS • PLANNERS • LAND SURVEYORS

2727 SOUTH RAINBOW BOULEVARD LAS VEGAS, NEVADA 89146-5148
PH. (702) 873-7550 FAX (702) 882-2997

SCALE: 1"=40' HORIZ. NONE VERT.

PROJECT NO: 6157

EXPIRES 06-30-05

ROBERT C. HOSEA III
REGISTERED PROFESSIONAL ENGINEER
NO. 10112
DATE: 4-6-04
CIVIL

CIVIL ENGINEERING DIVISION
CLARK COUNTY DEVELOPMENT SERVICES
ACCEPTED

BY: *[Signature]* DATE: 4/6/04

ACCEPTANCE OF THESE PLANS SHALL NOT BE CONSTRUED TO BE A PERMIT FOR AN APPROVAL OF ANY VIOLATION OF STATE, COUNTY OR FEDERAL LAW, SPECIFICATIONS, OR THE MANUAL ON UNIFORM TRAFFIC CONTROL DEVICES.

SHEET **TR1**
30 OF 31 SHEETS
DRAWING NO. **CC HTE#04-1134**

* CLARK COUNTY ONLY