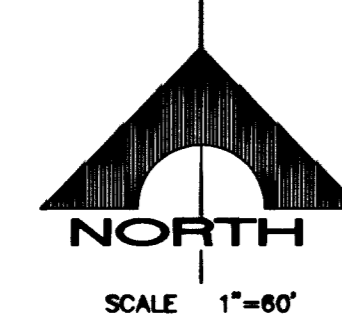
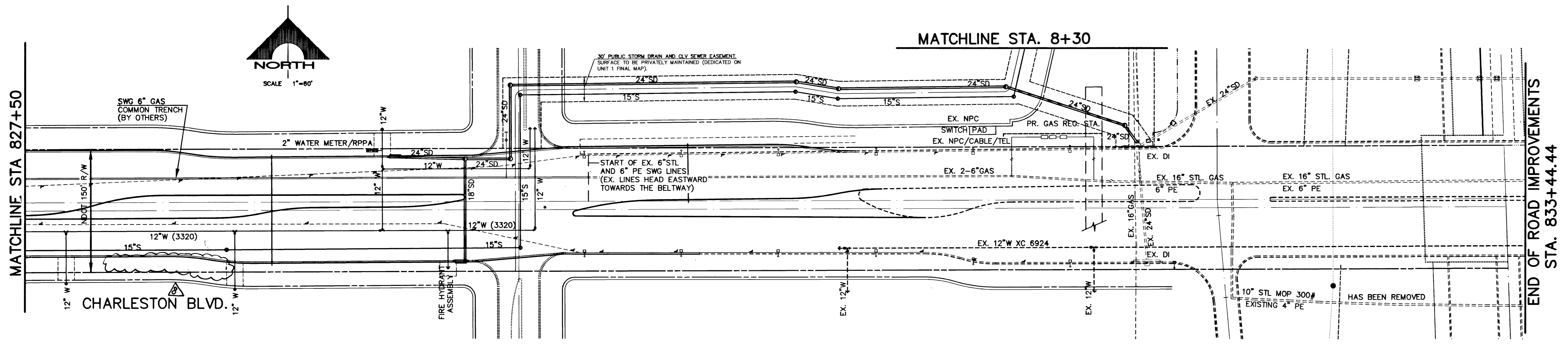
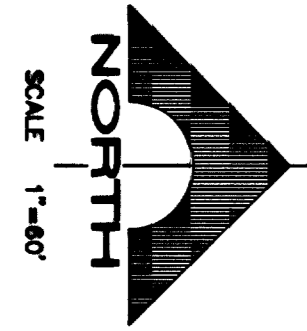
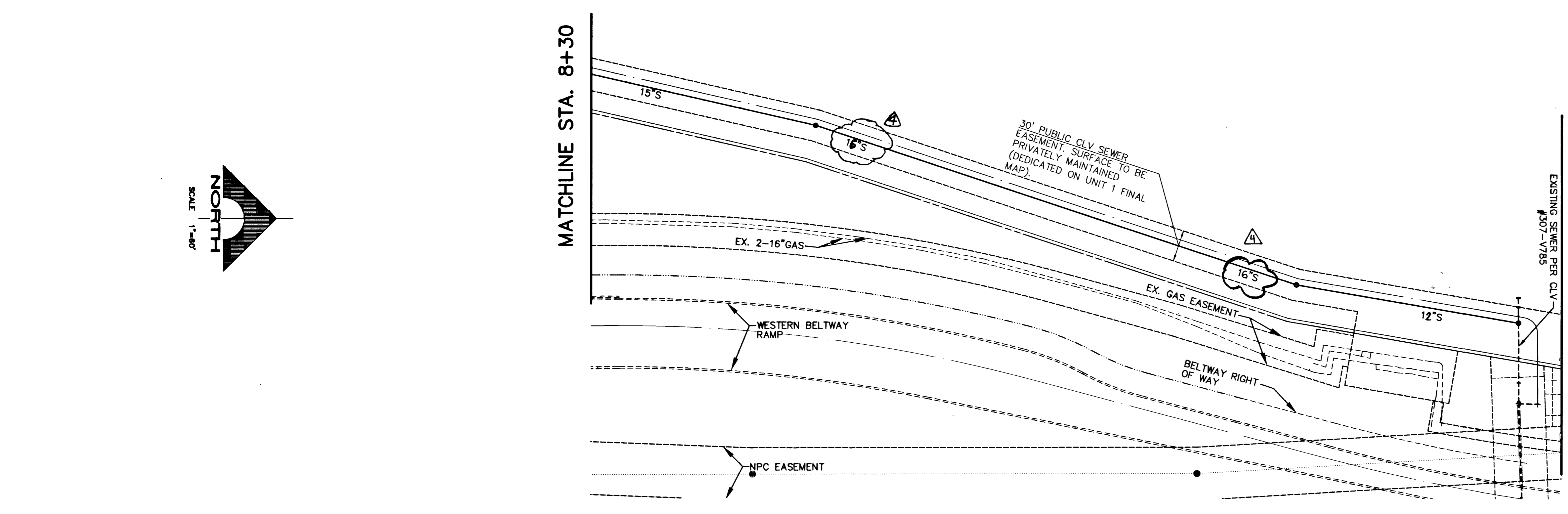


THIS PLAN IS FOR OVER-ALL PROJECT REVIEW AND INFORMATIONAL PURPOSES ONLY. SEE INDIVIDUAL PLAN AND PROFILE SHEETS, CONSTRUCTION DETAILS, AND LATERAL PROFILES FOR CONSTRUCTION INFORMATION



END OF ROAD IMPROVEMENTS
STA. 833+44.44



END WORK CONNECT TO EXISTING SANITARY



APPROVED FOR CONSTRUCTION
LAS VEGAS VALLEY WATER DISTRICT
DATE: 3/26/02

DESIGN: []	DRAWN: []	CHECKED: []	ISSUE DATE: []	ISSUE EDITOR: []	DATE: []
<p>RELOCATE W LAT REMOVE 1.5" WIM&RPPA REVERSE SEWER 63229</p>					
<p>ISSUE DATE: 10/16/01, ISSUE FOR AGENCY APPROVAL</p>					
<p>G.C. WALLACE, INC. Engineering/Architecture 7555 SOUTH RAINBOW BLVD., LAS VEGAS, NEVADA 89146 TELEPHONE: (702) 804-2000 • FAX: (702) 804-2299 F: 602020.014@GCMWALLACE.COM</p>					
<p>SUMMERLIN V 19/20 CHARLESTON BOULEVARD IMPROVEMENTS STATION 787+191 TO STATION 841+02 MASTER UTILITY PLAN</p>					
<p>SHEET C-5 5 OF 30 SHTS</p>					

40167 45191 58302
Fyfe/Martinez

107 V2560