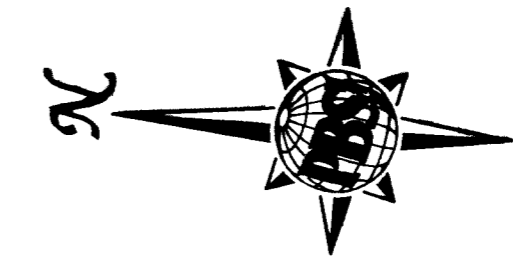
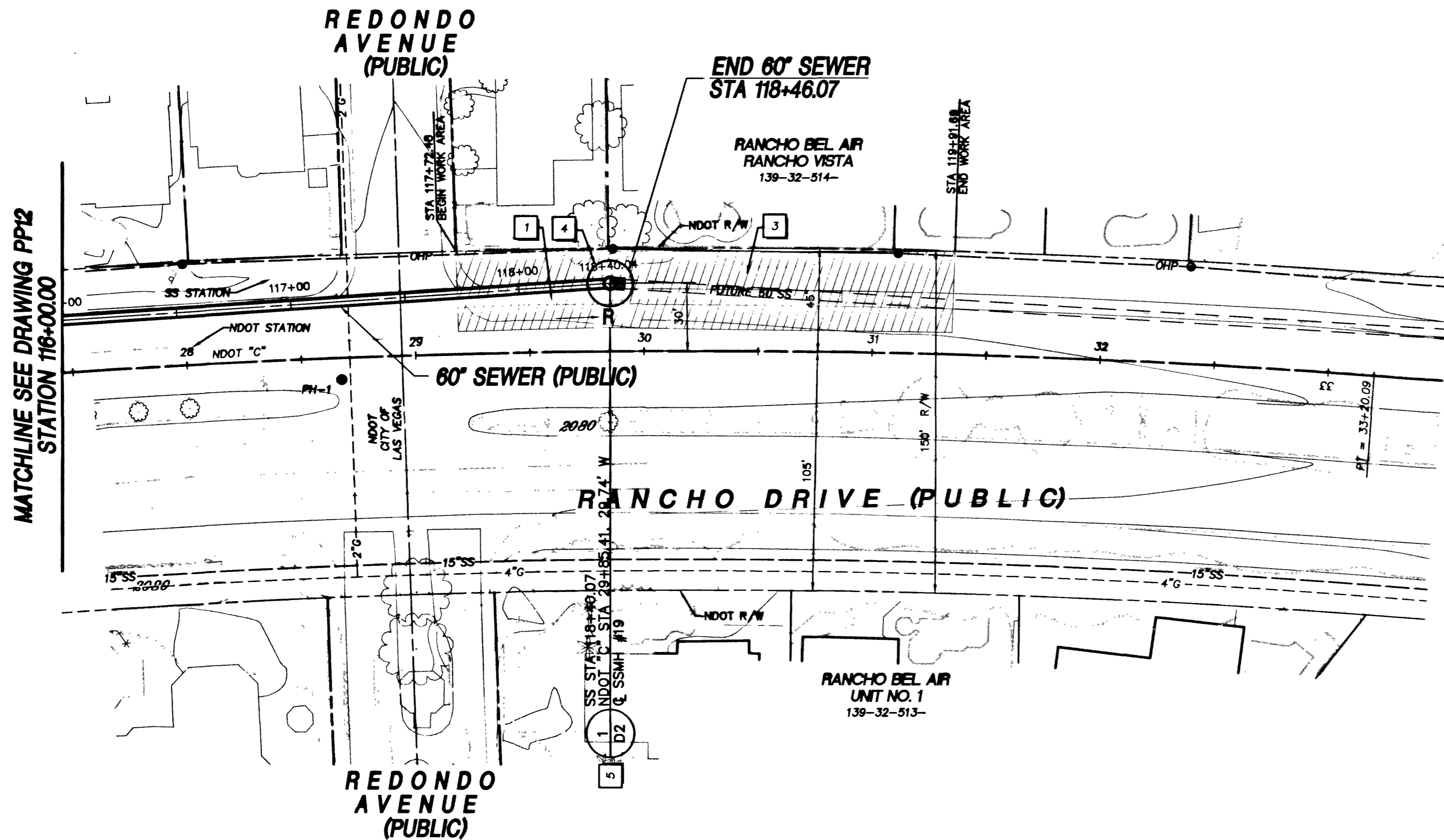


Call before you Dig  
1-800-227-2600

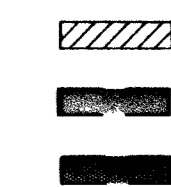


**KEY NOTES**

- 1 - REMOVE AND REPLACE EXISTING TRAFFIC ISLAND AS REQUIRED FOR CONSTRUCTION WITHIN WORK AREA LIMITS SHOWN. SEE DETAIL 3, DWG D1
- 2 - REMOVE AND REPLACE EXISTING CONCRETE CURB, GUTTER AND SIDEWALK AS REQUIRED
- 3 - SAWCUT, REMOVE AND REPLACE EXISTING PAVEMENT DAMAGED DURING CONSTRUCTION WITHIN WORK AREA LIMITS SHOWN. SEE DETAIL 1, DWG D1
- 4 - CONSTRUCT TUNNEL ACCESS SHAFT / JACKING PIT
- 5 - CONSTRUCT NEW MANHOLE

**HATCH LEGEND**

WORK AREA (LIMITS OF CONSTRUCTION ACTIVITIES)  
TEMPORARY CONSTRUCTION EASEMENT  
PERMANENT UTILITY EASEMENT



AND OVERHEAD POWER LINE CONTACT, IT'S COSTLY  
DRAWN BY: C. LUQUETTE  
DESIGNED BY: A. SPATA  
DATE: NOV. 9, 2000  
JOB NO.: 510785

AND CUTTING UNDERGROUND UTILITY LINES, IT'S COSTLY.  
Call before you Overhead  
1-702-593-6111  
SAFETY SERVICES DEPARTMENT

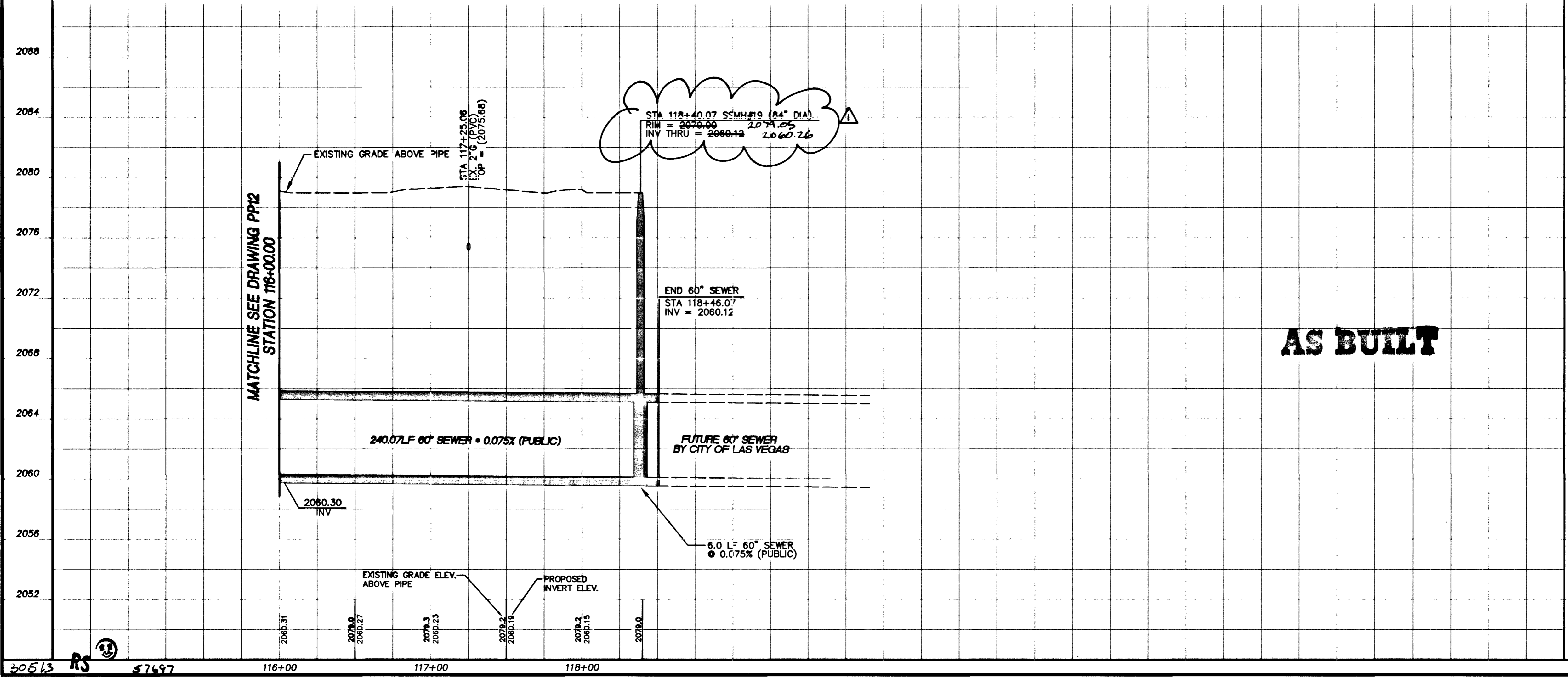
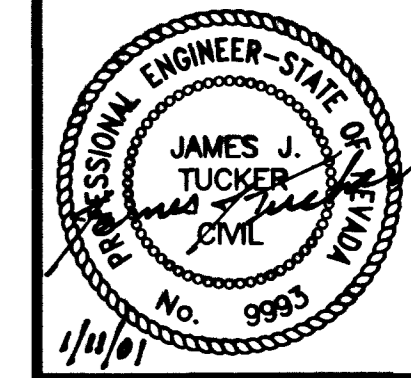
Call before you Dig  
1-800-227-2600  
UNDERGROUND SERVICE (USA)

**LEGEND:**  
L - LAUNCH PIT  
R - RECEIVING PIT

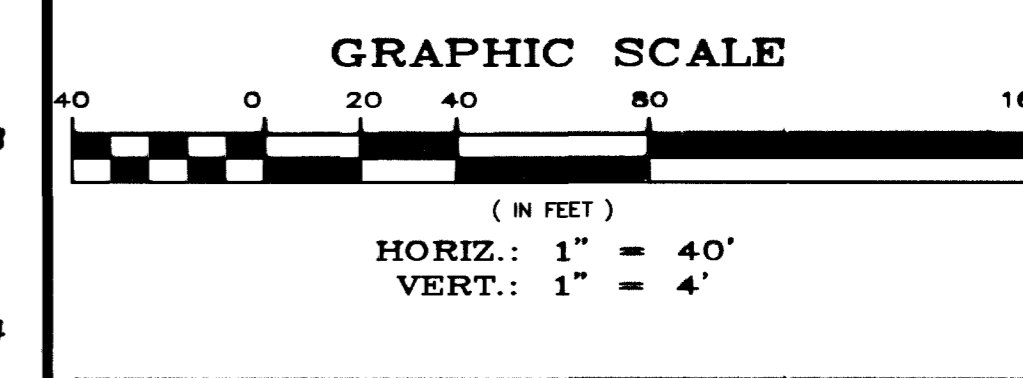
**CAUTION:**  
EXISTING UTILITIES ARE LOCATED ON THE PLANS FROM A SEARCH OF AVAILABLE RECORDS. CONTRACTOR TO VERIFY LOCATIONS AND DEPTHS PRIOR TO CONSTRUCTION.

| REVISIONS |          |
|-----------|----------|
| NO.       | DATE     |
| 1         | AS BUILT |

US 95/RANCHO SEWER PHASE IB  
DRAWN BY: L. ATWELL  
DESIGNED BY: A. SPATA  
DATE: NOV. 9, 2000  
JOB NO.: 510785

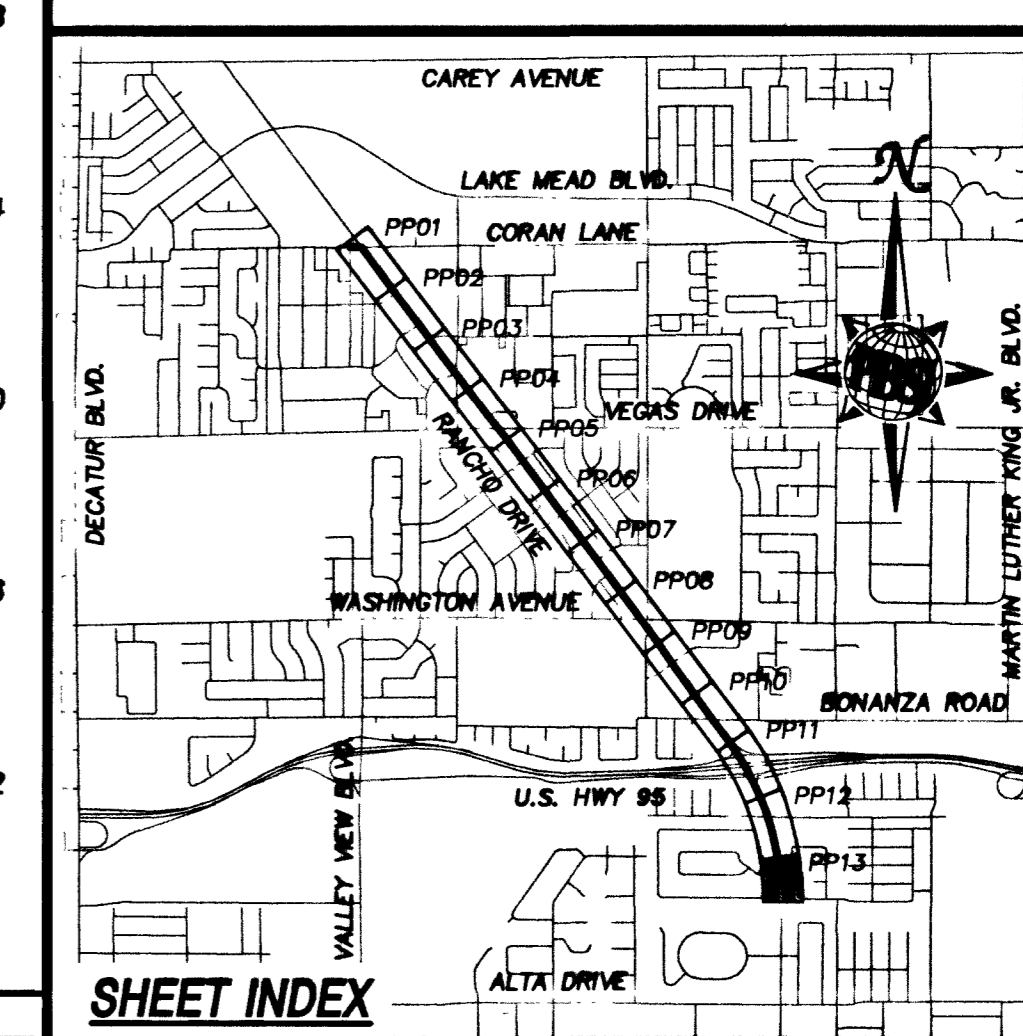


**AS BUILT**

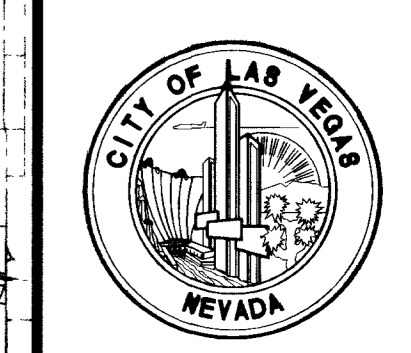


**BASIS OF BEARING**  
THE BASIS OF BEARING FOR THIS PROJECT IS GRID NORTH AS DEFINED BY THE NEVADA COORDINATE SYSTEM OF 1983 (NCSB3), EAST ZONE, (2701), DETERMINED BY GIS CONTROL POINTS, "825" AND "PUPPIES" AS SHOWN ON A RECORD OF SURVEY ON FILE IN THE CLARK COUNTY RECORDER'S OFFICE, IN FILE 88 OF SURVEYS, AT PAGE 53.

**BENCHMARK**  
CLARK COUNTY BENCHMARK NO. 7C01 19E8 - RIVET AND PLATE IN TOP OF CURB SOUTHEAST RETURN OF RANCHO DRIVE AND CORAN LANE.  
NAVD 1988 DATUM  
ELEVATION = 656.6085 METERS  
2154.22 FEET



Department of Public Works  
U.S. 95 / RANCHO SEWER - PHASE IB  
PLAN AND PROFILE  
STA 116+00.00 TO STA 118+46.07



DRAWING No. 17  
**PP13**  
PLAN# 307-V799