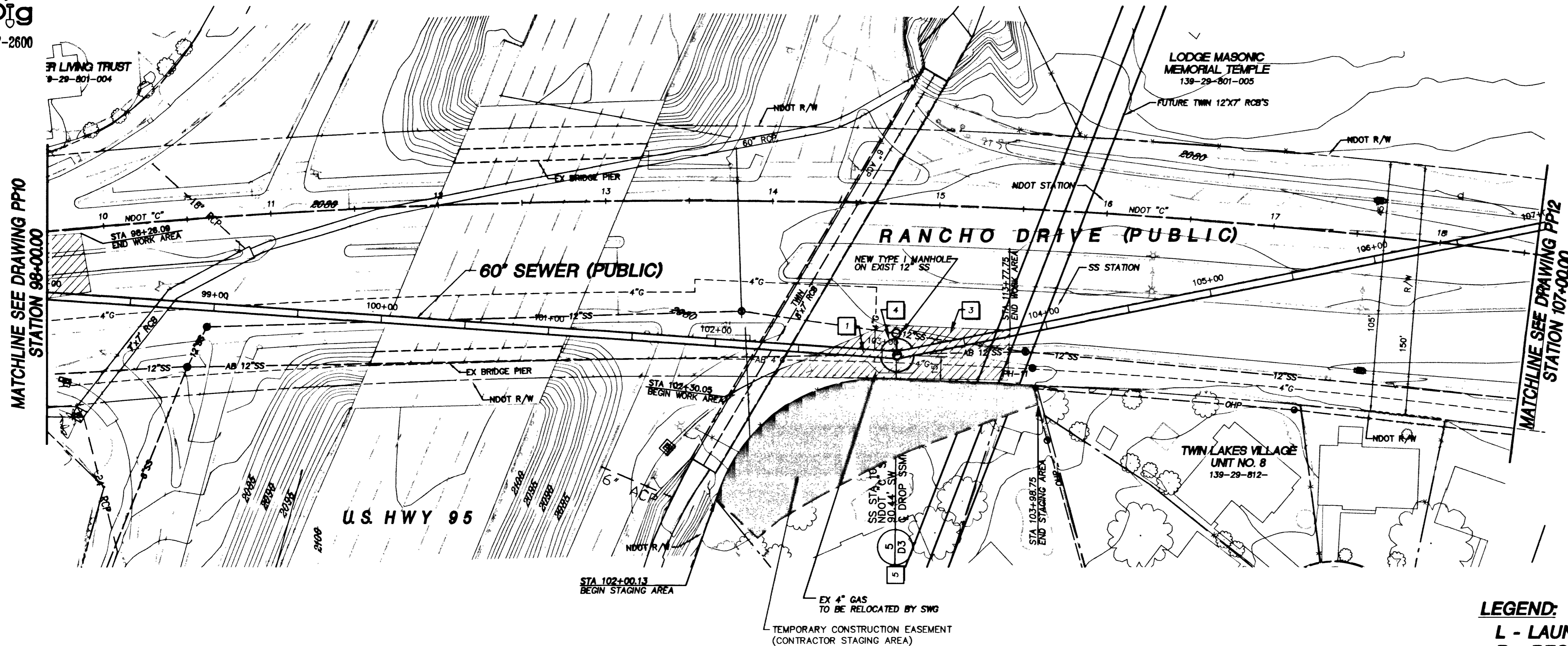
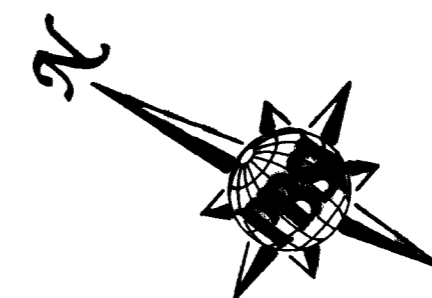


Call before you Dig
1-800-227-2600

U.S. HWY 95



KEY NOTES

- 1 - REMOVE AND REPLACE EXISTING TRAFFIC ISLAND AS REQUIRED FOR CONSTRUCTION WITHIN WORK AREA LIMITS SHOWN. SEE DETAIL 3, DWG D1
- 2 - REMOVE AND REPLACE EXISTING CONCRETE CURB, GUTTER AND SIDEWALK AS REQUIRED
- 3 - SAWCUT, REMOVE AND REPLACE EXISTING PAVEMENT DAMAGED DURING CONSTRUCTION WITHIN WORK AREA LIMITS SHOWN. SEE DETAIL 1, DWG D1
- 4 - CONSTRUCT TUNNEL ACCESS SHAFT / JACKING PIT
- 5 - CONSTRUCT NEW MANHOLE

HATCH LEGEND

WORK AREA (LIMITS OF CONSTRUCTION ACTIVITIES)
TEMPORARY CONSTRUCTION EASEMENT
PERMANENT UTILITY EASEMENT



AND OVERHEAD POWER LINE CONTACT: IT'S COSTLY
AND CUTTING UNDERGROUND UTILITY LINES: IT'S COSTLY.

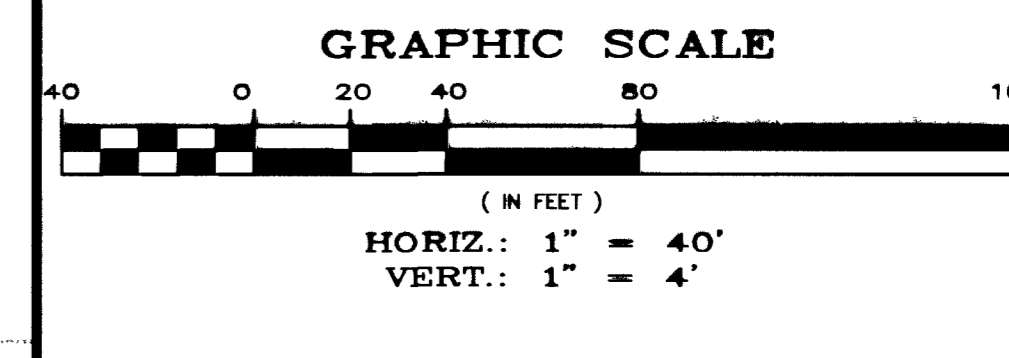
Call before you Overhead
1-702-593-6111
NEVADA POWER DIVISION AND SAFETY SERVICES DEPARTMENT

Call before you Dig
1-800-227-2600
UNDERGROUND SERVICE (USA)

LEGEND:

L - LAUNCH PIT
R - RECEIVING PIT

CAUTION:
EXISTING UTILITIES ARE LOCATED ON THE PLANS FROM A SEARCH OF AVAILABLE RECORDS. CONTRACTOR TO VERIFY LOCATIONS AND DEPTHS PRIOR TO CONSTRUCTION.



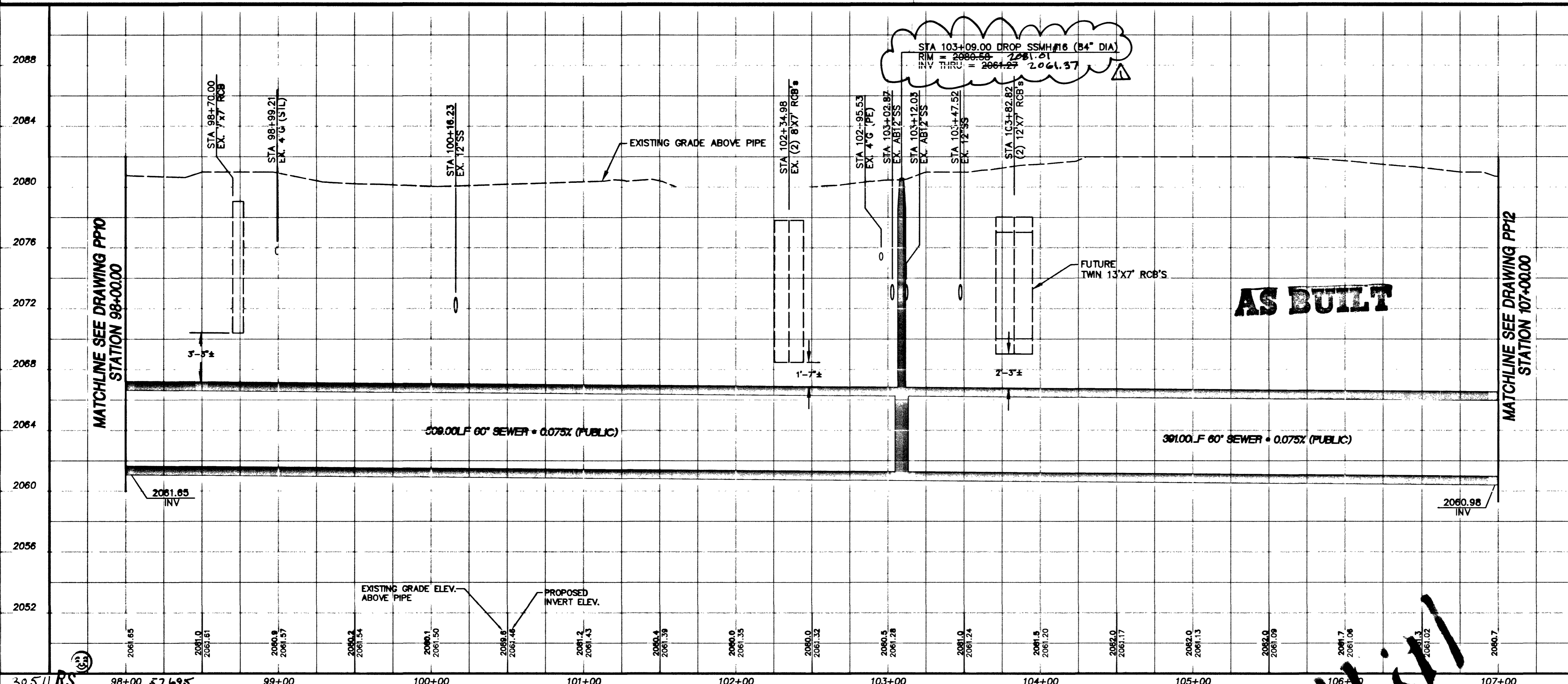
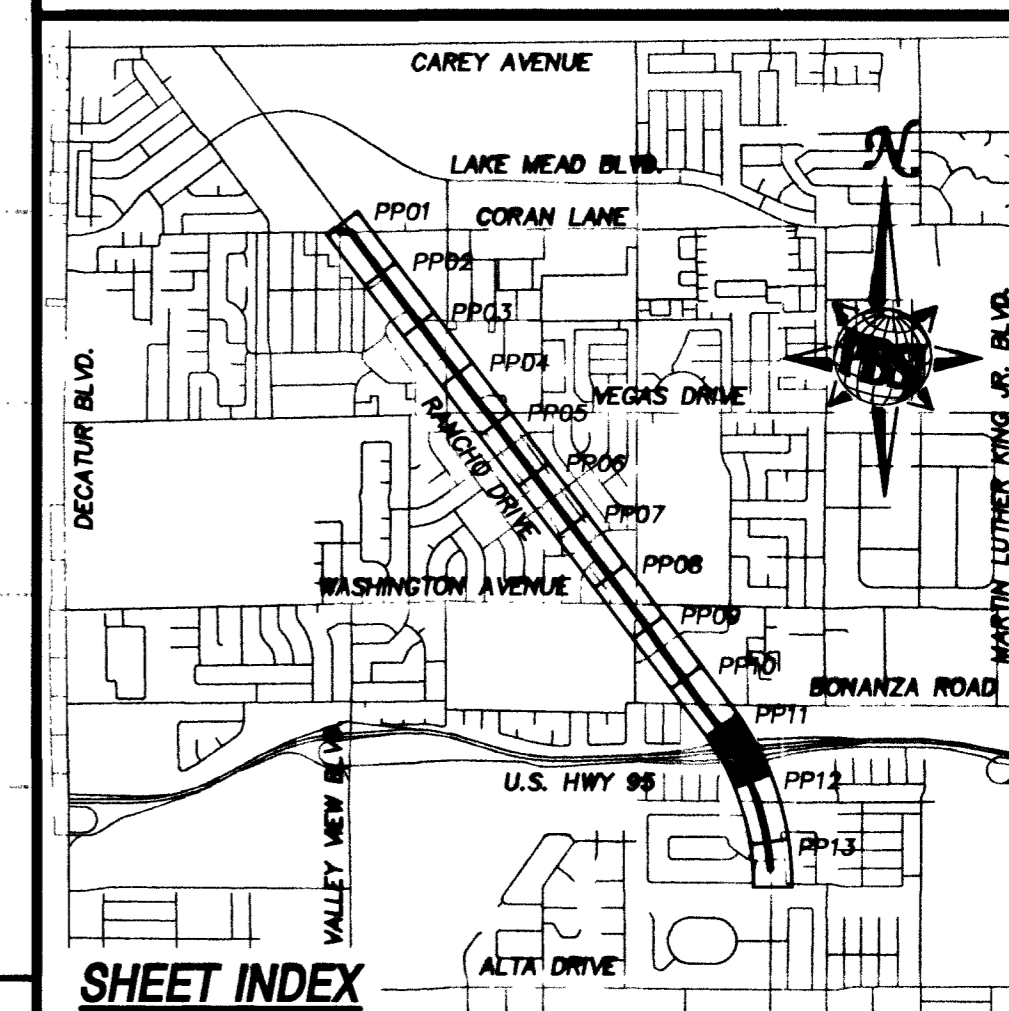
BASIS OF BEARING

THE BASIS OF BEARING FOR THIS PROJECT IS GRID NORTH AS DEFINED BY THE NEVADA COORDINATE SYSTEM OF 1983 (NCS83), EAST ZONE, (2701), DETERMINED BY GIS CONTROL POINTS, "825" AND "PUPPIES" AS SHOWN ON A RECORD OF SURVEY ON FILE IN THE CLARK COUNTY RECORDER'S OFFICE, IN FILE 88 OF SURVEYS, AT PAGE 53.

BENCHMARK

CLARK COUNTY BENCHMARK NO. 7C01 19E8 - RIVET AND PLATE IN TOP OF CURB SOUTHEAST RETURN OF RANCHO DRIVE AND CORAN LANE.

NAVD 1988 DATUM
ELEVATION = 656.6065 METERS
2154.22 FEET



REVISIONS		DATE	DESCRIPTION
1	AS BUILT		

US 95 / RANCHO SEWER PHASE IB
DRAWN BY: C. LUCQUETTE
DESIGNED BY: A. SPATA
CHECKED BY: L. ATWELL
DATE: NOV. 9, 2000
JOB NO.: 510755

PBS

PROFESSIONAL ENGINEER - STATE OF NEVADA
JAMES J. TUCKER
No. 9993

Department of Public Works
U.S. 95 / RANCHO SEWER - PHASE IB
PLAN AND PROFILE
STA 98+00.00 TO STA 107+00.00

DRAWING No. 15
PP11
PLAN# 307-V799