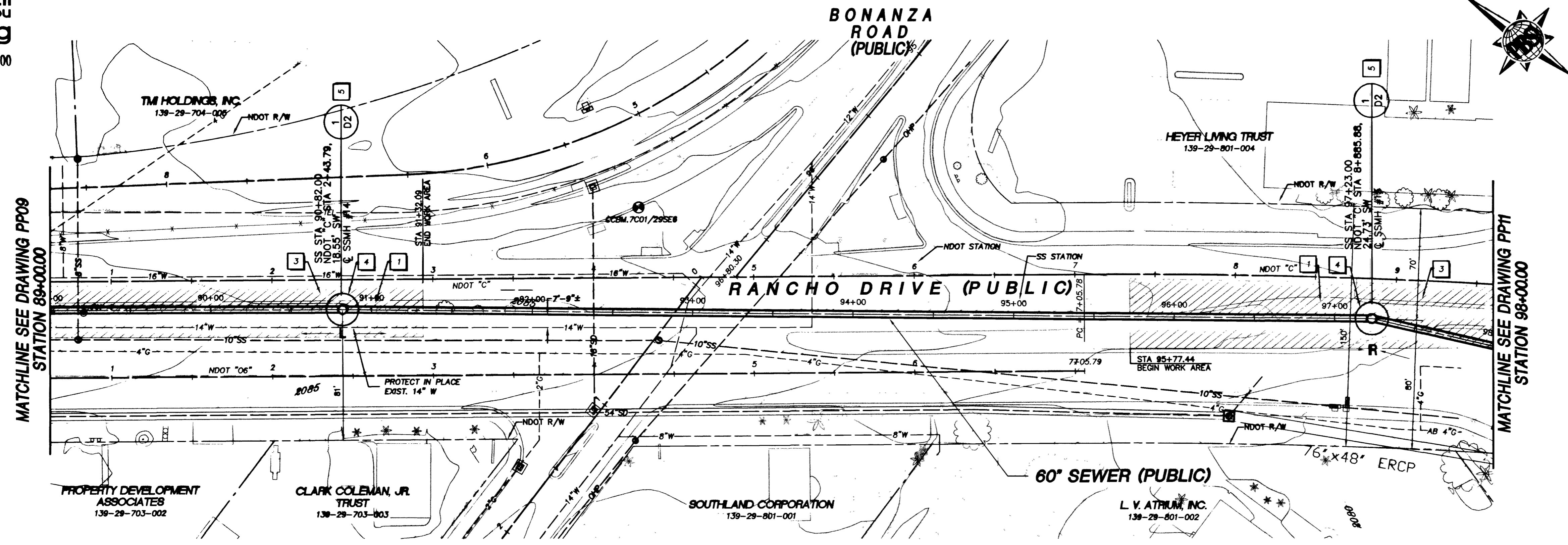


Call before you Dig
1-800-227-2600



MATCHLINE SEE DRAWING PP08
STATION 89+00.00

MATCHLINE SEE DRAWING PP11
STATION 98+00.00

KEY NOTES

- 1 - REMOVE AND REPLACE EXISTING TRAFFIC ISLAND AS REQUIRED FOR CONSTRUCTION WITHIN WORK AREA LIMITS SHOWN. SEE DETAIL 3, DWG D1
- 2 - REMOVE AND REPLACE EXISTING CONCRETE CURB, GUTTER AND SIDEWALK AS REQUIRED
- 3 - SAWCUT, REMOVE AND REPLACE EXISTING PAVEMENT DAMAGED DURING CONSTRUCTION WITHIN WORK AREA LIMITS SHOWN. SEE DETAIL 1, DWG D1
- 4 - CONSTRUCT TUNNEL ACCESS SHAFT / JACKING PIT
- 5 - CONSTRUCT NEW MANHOLE

HATCH LEGEND

- WORK AREA (LIMITS OF CONSTRUCTION ACTIVITIES)
- TEMPORARY CONSTRUCTION EASEMENT
- PERMANENT UTILITY EASEMENT

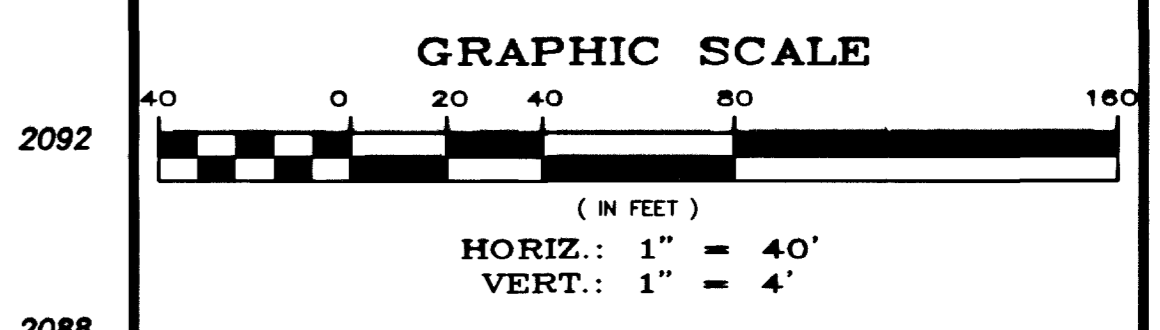
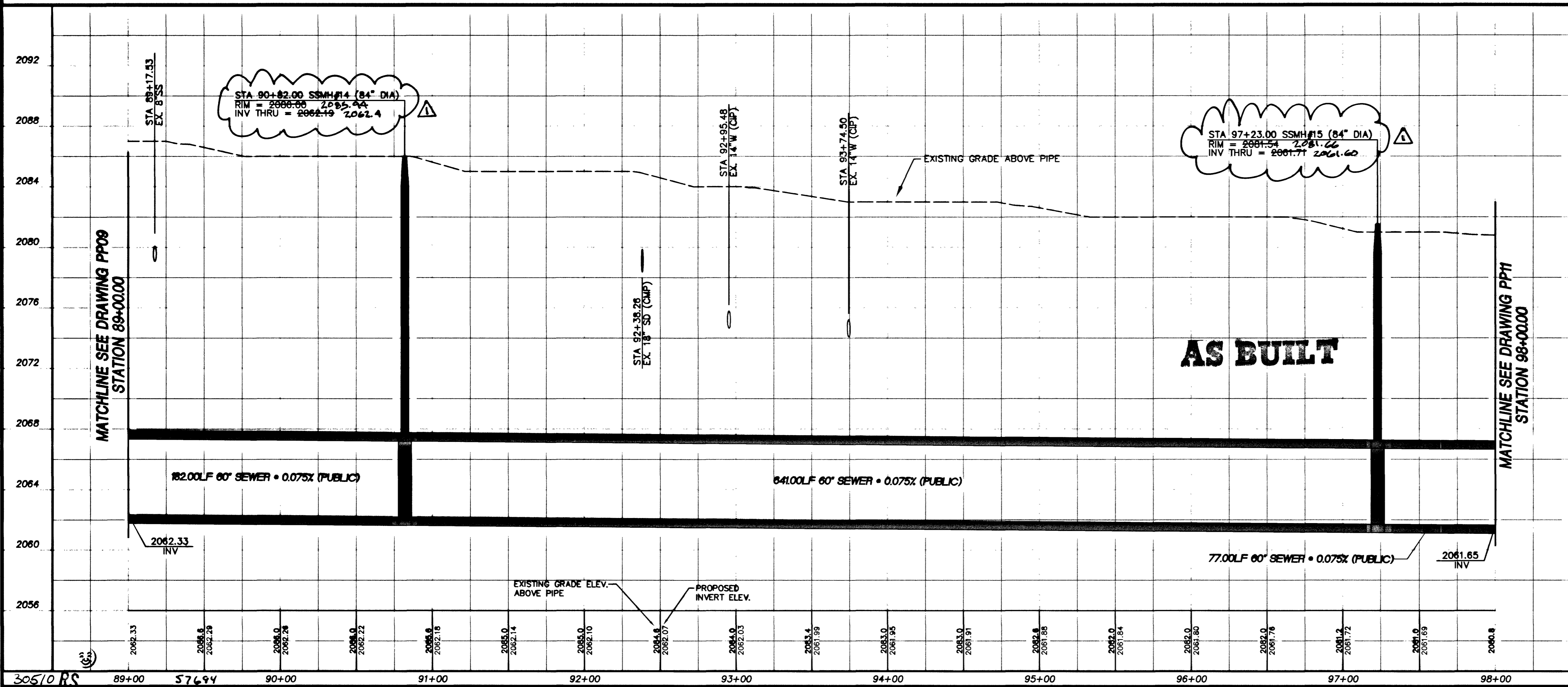
Call before you Overhead
1-702-593-6111
NEVADA POWER ENVIRONMENT AND SAFETY SERVICES DEPARTMENT

Call before you Dig
1-800-227-2600
UNDERGROUND SERVICE (USA)

CAUTION
EXISTING UTILITIES ARE LOCATED ON THE PLANS FROM A SEARCH OF AVAILABLE RECORDS. CONTRACTOR TO VERIFY LOCATIONS AND DEPTHS PRIOR TO CONSTRUCTION.

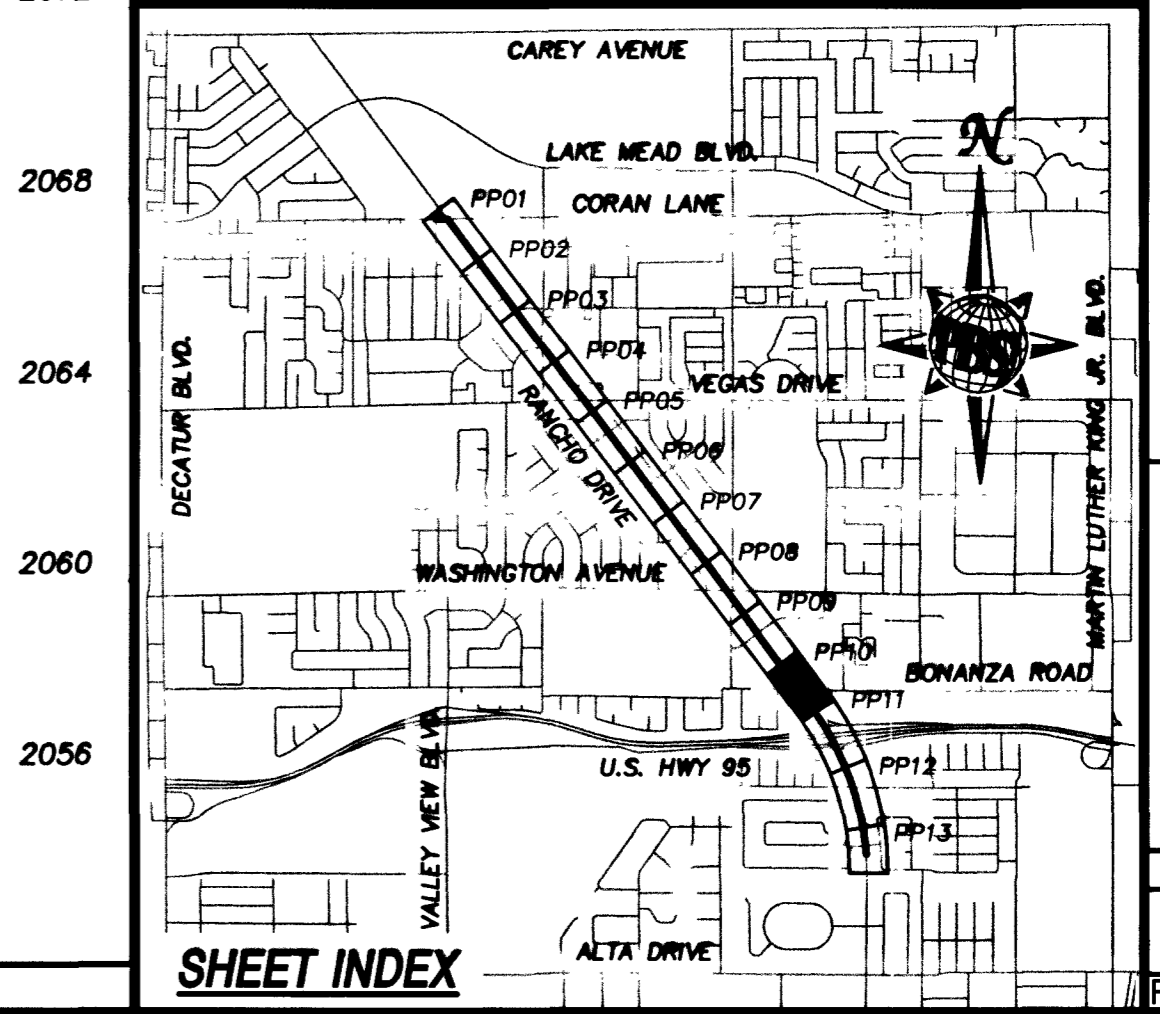
Las Vegas Valley Water District
Date 11/10/01

LEGEND:
L - LAUNCH PIT
R - RECEIVING PIT



BASIS OF BEARING
THE BASIS OF BEARING FOR THIS PROJECT IS GRID NORTH AS DEFINED BY THE NEVADA COORDINATE SYSTEM OF 1983 (NCS83), EAST ZONE, (2701), DETERMINED BY GIS CONTROL POINTS, "825" AND "PUPPIES" AS SHOWN ON A RECORD OF SURVEY ON FILE IN THE CLARK COUNTY RECORDER'S OFFICE, IN FILE 88 OF SURVEYS, AT PAGE 53.

BENCHMARK
CLARK COUNTY BENCHMARK NO. 7001 1966 - RIVET AND PLATE IN TOP OF CURB SOUTHEAST RETURN OF RANCHO DRIVE AND CORAN LANE.
NAVD 1988 DATUM
ELEVATION = 656.6065 METERS
2154.22 FEET



REVISIONS	
NO.	DESCRIPTION

Department of Public Works
U.S. 95 / RANCHO SEWER - PHASE IB
PLAN AND PROFILE
STA 89+00.00 TO STA 98+00.00

DRAWING No. 14
PP10
PLAN# 307-V799