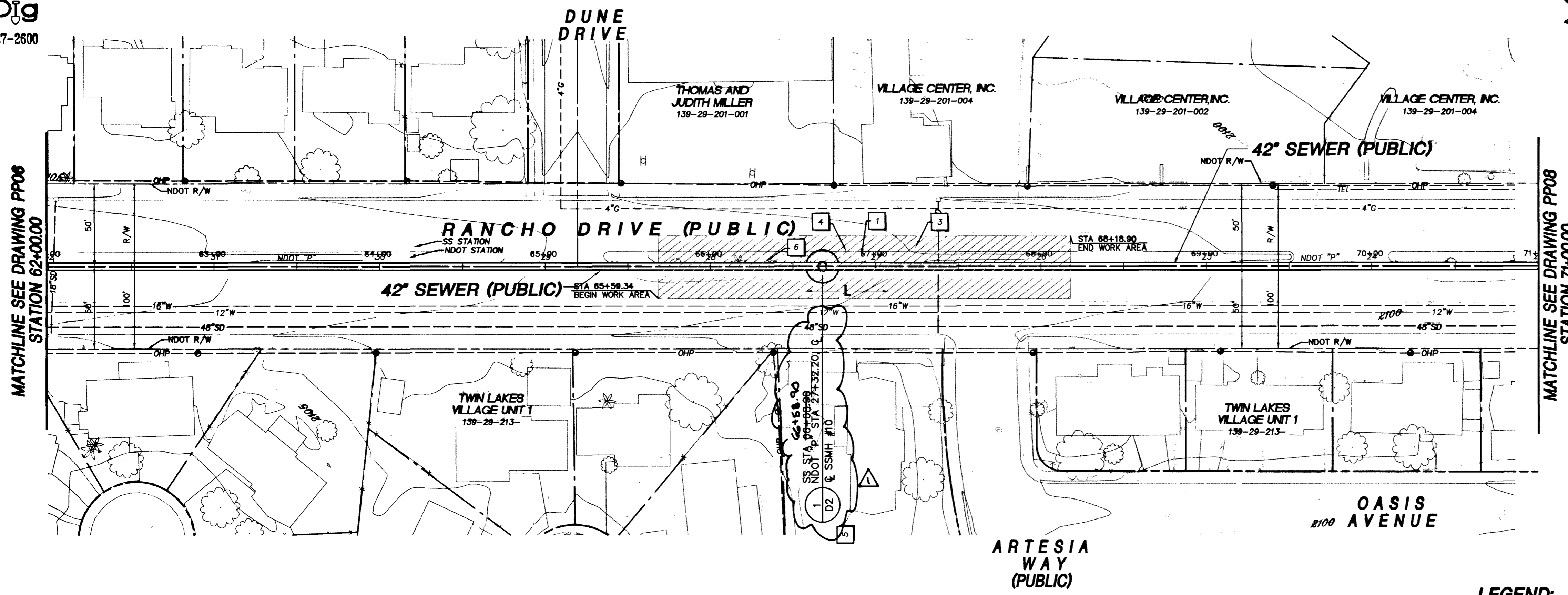
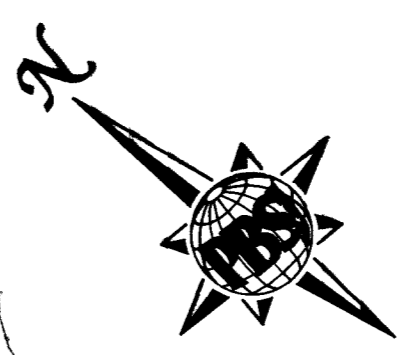


Call before you Dig
1-800-227-2600



KEY NOTES

- 1 - REMOVE AND REPLACE EXISTING TRAFFIC ISLAND AS REQUIRED FOR CONSTRUCTION WITHIN WORK AREA LIMITS SHOWN. SEE DETAIL 3, DWG D1
- 2 - REMOVE AND REPLACE EXISTING CONCRETE CURB, GUTTER AND SIDEWALK AS REQUIRED
- 3 - SAWCUT, REMOVE AND REPLACE EXISTING PAVEMENT DAMAGED DURING CONSTRUCTION WITHIN WORK AREA LIMITS SHOWN. SEE DETAIL 1, DWG D1
- 4 - CONSTRUCT TUNNEL ACCESS SHAFT / JACKING PIT
- 5 - CONSTRUCT NEW MANHOLE
- 6 - REMOVE AND REPLACE EXIST PALM TREE

HATCH LEGEND

- WORK AREA (LIMITS OF CONSTRUCTION ACTIVITIES)
- TEMPORARY CONSTRUCTION EASEMENT
- PERMANENT UTILITY EASEMENT

Call before you Overhead
1-702-593-6111
NEVADA POWER AND SAFETY SERVICES DEPARTMENT

Call before you Dig
1-800-227-2600
UNDERGROUND SERVICE (USA)

CAUTION
EXISTING UTILITIES ARE LOCATED ON THE PLANS FROM A SEARCH OF AVAILABLE RECORDS. CONTRACTOR TO VERIFY LOCATIONS AND DEPTHS PRIOR TO CONSTRUCTION.

LEGEND:
L - LAUNCH PIT
R - RECEIVING PIT

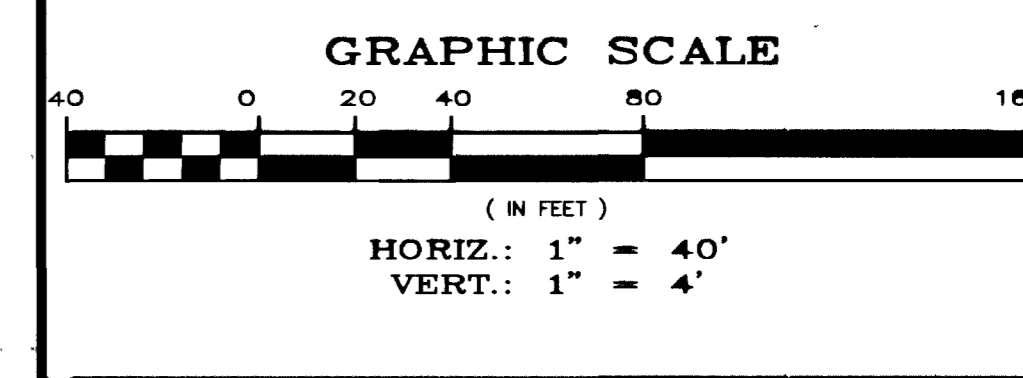
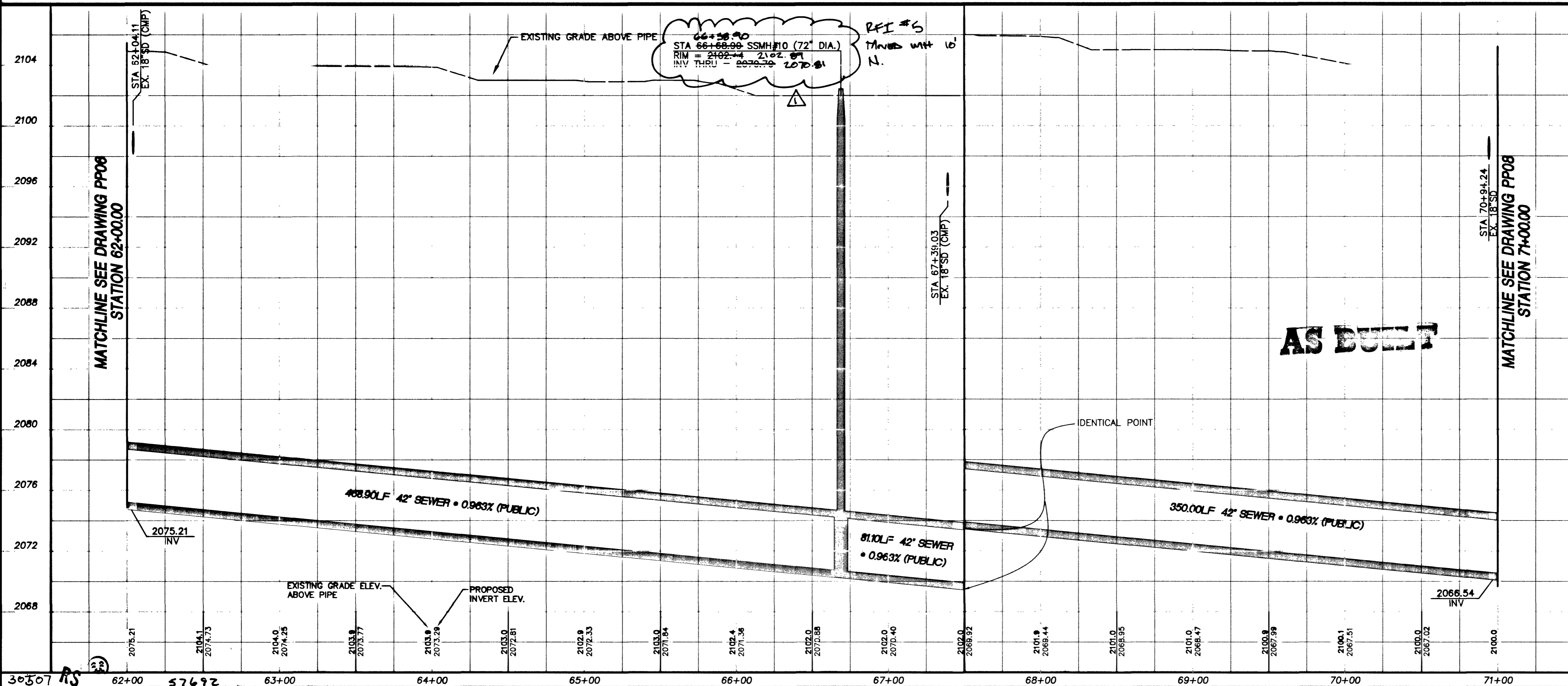
REVISIONS

NO.	DATE	DESCRIPTION
1	9/11/08	AS BUILT

US 95/RANCHO SEWER PHASE IB
DESIGNED BY: L. ATWELL
CHECKED BY: A. SPATA
DRAWN BY: C. LUQUETTE
DATE: NOV. 9, 2000
JOB NO.: 510755

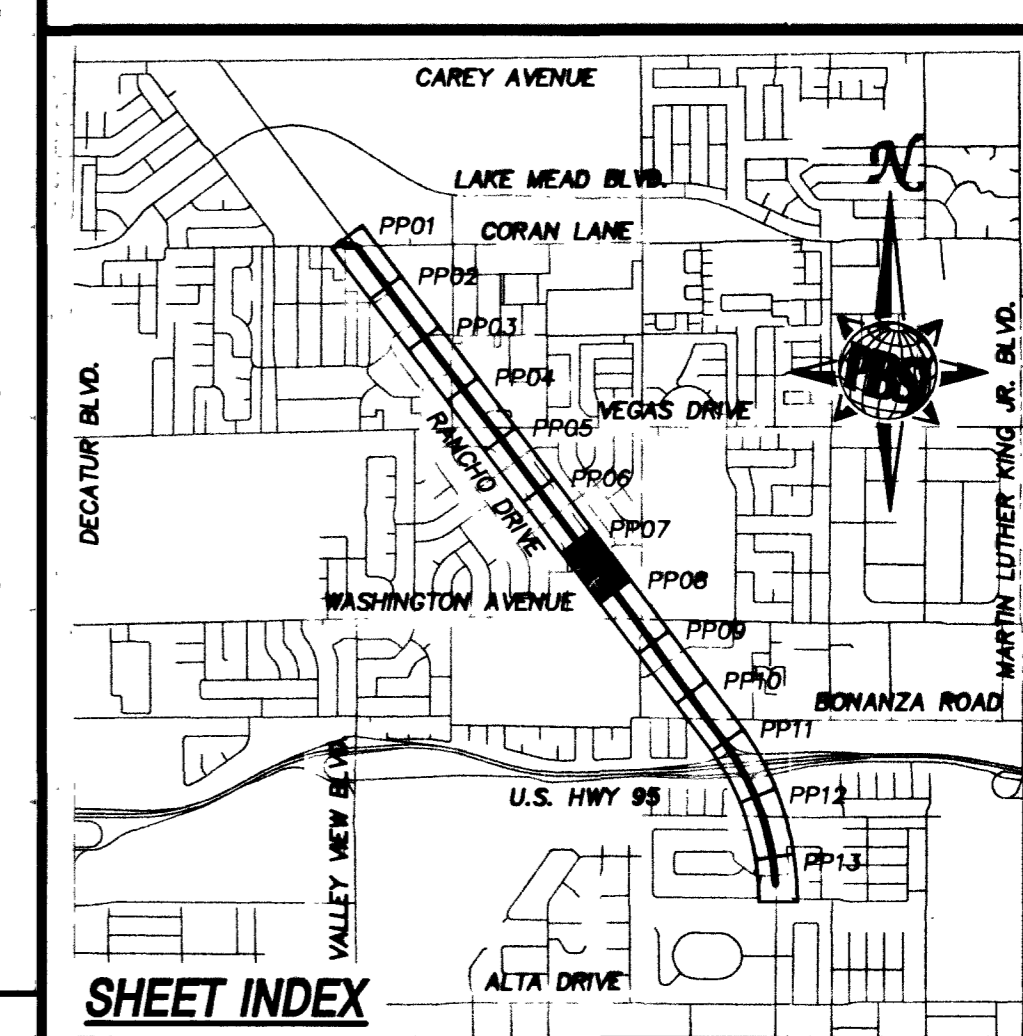
PBS

PROFESSIONAL ENGINEER-STATE OF NEVADA
JAMES J. TUCKER
No. 9993
11/11/01



BASIS OF BEARING
THE BASIS OF BEARING FOR THIS PROJECT IS GRID NORTH AS DEFINED BY THE NEVADA COORDINATE SYSTEM OF 1983 (NCS83), EAST ZONE, (2701), DETERMINED BY GIS CONTROL POINTS, "825" AND "PUPPIES" AS SHOWN ON A RECORD OF SURVEY ON FILE IN THE CLARK COUNTY RECORDER'S OFFICE, IN FILE 88 OF SURVEYS, AT PAGE 53.

BENCHMARK
CLARK COUNTY BENCHMARK NO. 7C01 19E8 - RIVET AND PLATE IN TOP OF CURB SOUTHEAST RETURN OF RANCHO DRIVE AND CORAN LANE.
NAVD 1988 DATUM
ELEVATION = 656.6065 METERS
2154.22 FEET



Department of Public Works

U.S. 95 / RANCHO SEWER - PHASE IB
PLAN AND PROFILE
STA 62+00.00 TO STA 71+00.00

DRAWING No. 11
PP07
PLAN# 307-V799