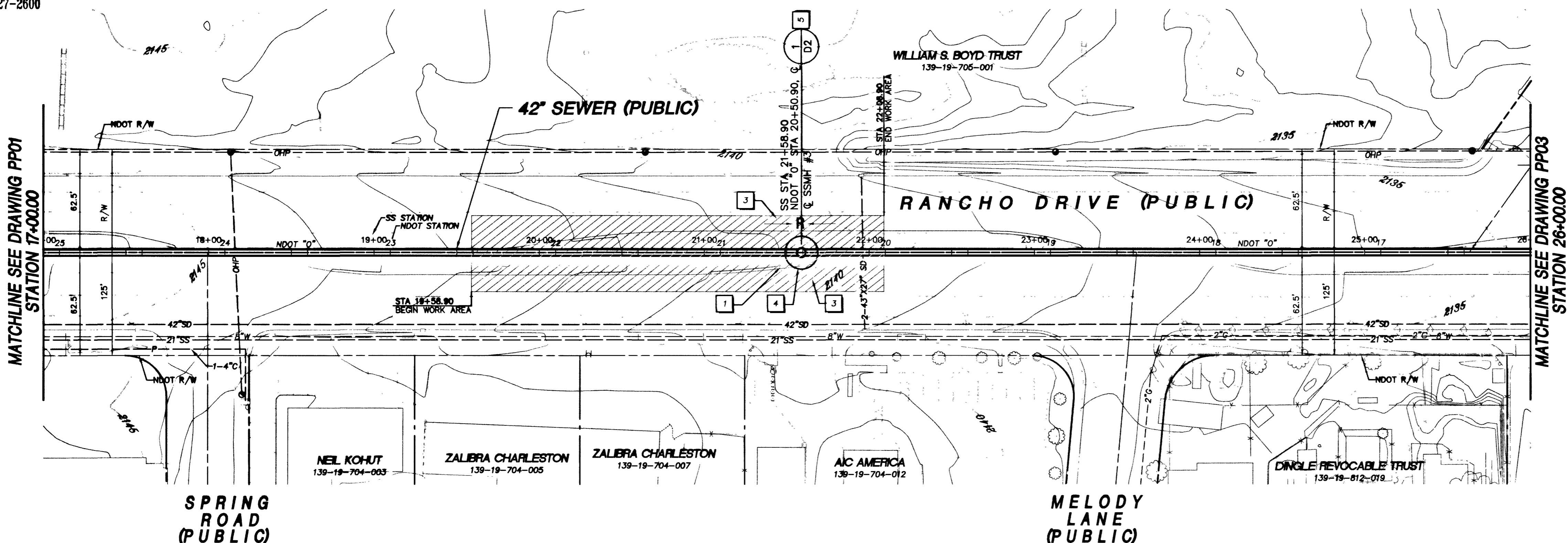


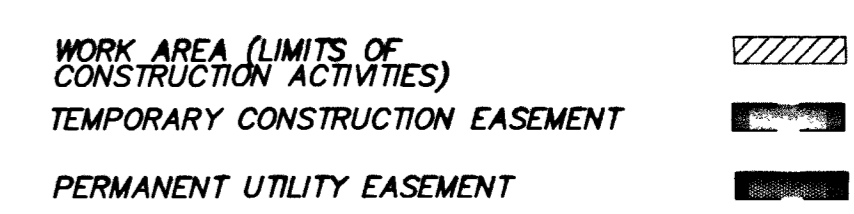
Call before you Dig
1-800-227-2600



KEY NOTES

- 1 - REMOVE AND REPLACE EXISTING TRAFFIC ISLAND AS REQUIRED FOR CONSTRUCTION WITHIN WORK AREA LIMITS SHOWN. SEE DETAIL 3, DWG D1
- 2 - REMOVE AND REPLACE EXISTING CONCRETE CURB, GUTTER AND SIDEWALK AS REQUIRED
- 3 - SAWCUT, REMOVE AND REPLACE EXISTING PAVEMENT DAMAGED DURING CONSTRUCTION WITHIN WORK AREA LIMITS SHOWN. SEE DETAIL 1, DWG D1
- 4 - CONSTRUCT TUNNEL ACCESS SHAFT / JACKING PIT
- 5 - CONSTRUCT NEW MANHOLE

HATCH LEGEND



Call before you Overhead
1-702-593-6111
NEVADA PUBLIC UTILITIES AND SAFETY SERVICES DEPARTMENT

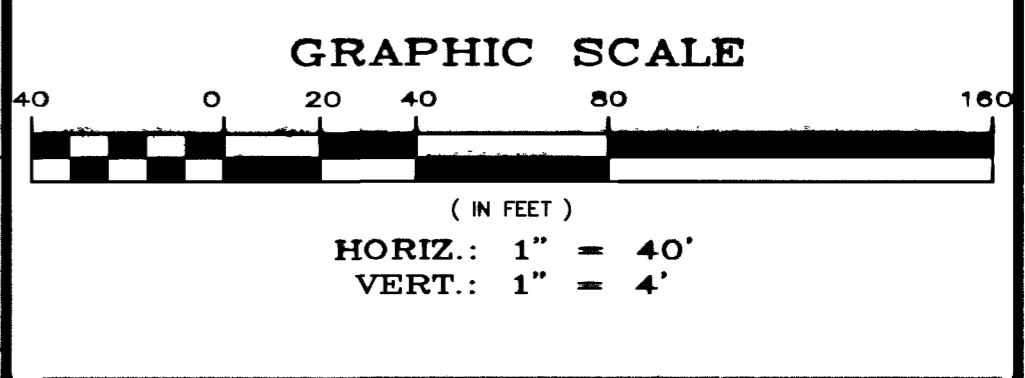
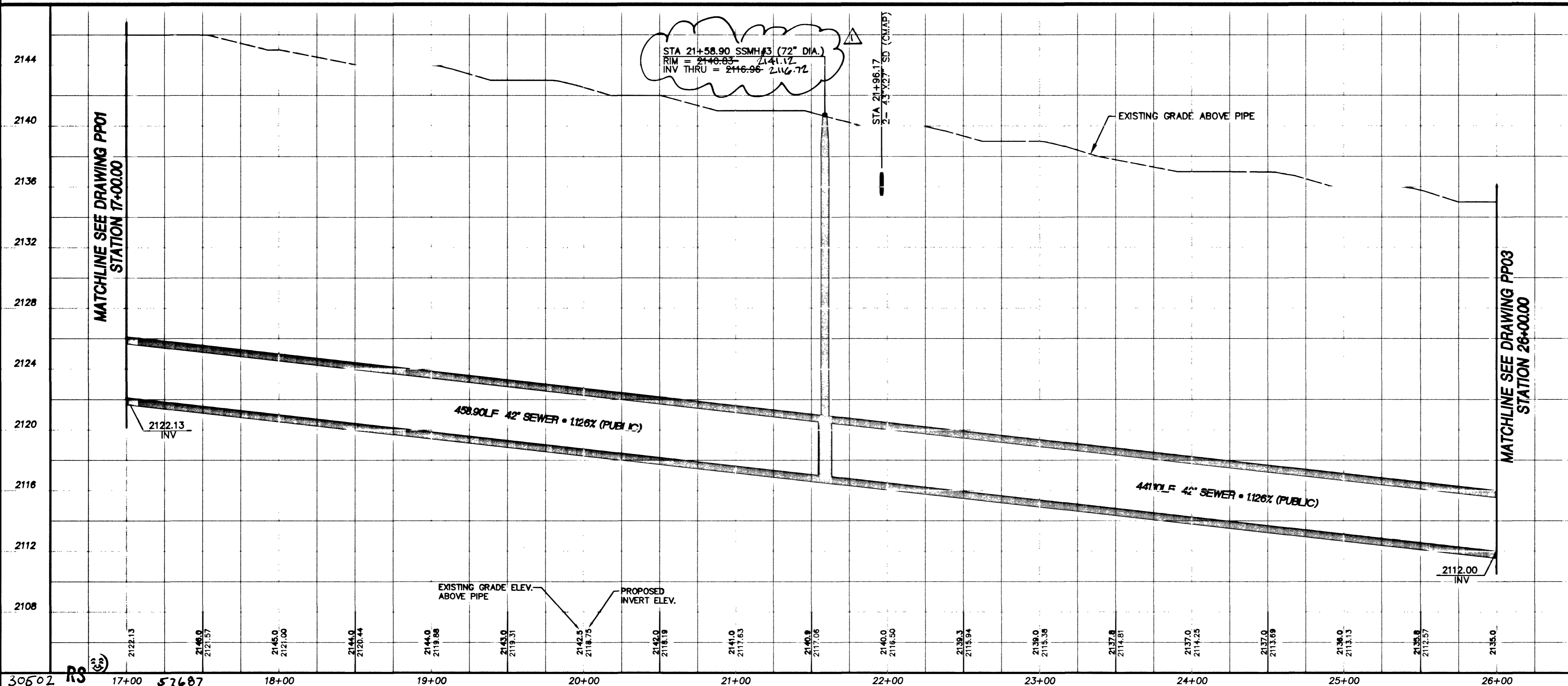
Call before you Dig
1-800-227-2600
UNDERGROUND SERVICE (USA)

LEGEND:
L - LAUNCH PIT
R - RECEIVING PIT

CAUTION
EXISTING UTILITIES ARE LOCATED ON THE PLANS FROM A SEARCH OF AVAILABLE RECORDS. CONTRACTOR TO VERIFY LOCATIONS AND DEPTHS PRIOR TO CONSTRUCTION.

REVISIONS	
NO.	DATE
1	9/16/05 AS BUILT
2	
3	
4	
5	

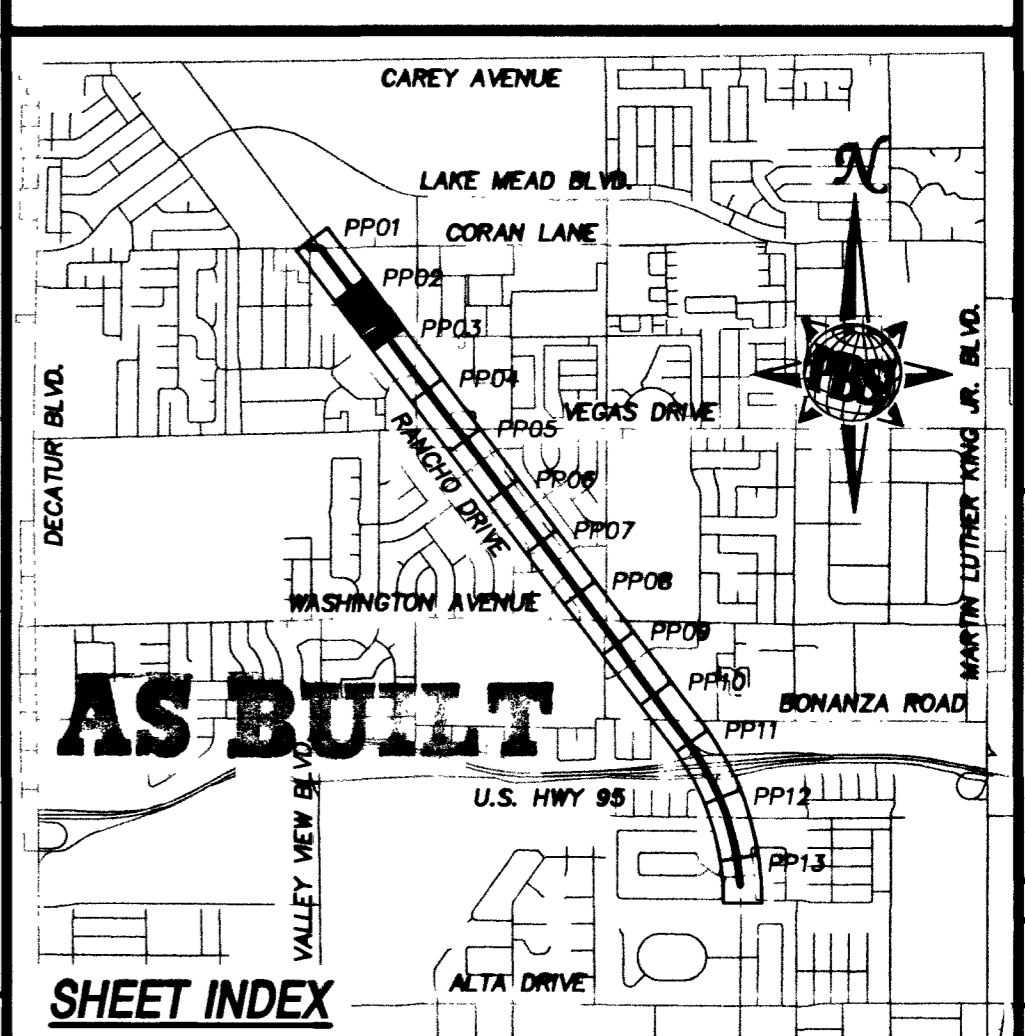
US 95/RANCHO SEWER PHASE IB
DRAWN BY: C. LUQUETTE
DESIGNED BY: A. SPATA
CHECKED BY: L. ATWELL
DATE: NOV. 9, 2000
JOB NO.: 510755
PROFESSIONAL ENGINEER-STATE OF NEVADA
JAMES J. TUCKER
CIVIL
No. 9993
1/11/01



BASIS OF BEARING
THE BASIS OF BEARING FOR THIS PROJECT IS GRID NORTH AS DEFINED BY THE NEVADA COORDINATE SYSTEM OF 1983 (NCS83), EAST ZONE, (2701), DETERMINED BY GIS CONTROL POINTS, "B25" AND "PUPPIES" AS SHOWN ON A RECORD OF SURVEY ON FILE IN THE CLARK COUNTY RECORDER'S OFFICE, IN FILE 88 OF SURVEYS, AT PAGE 53.

BENCHMARK
CLARK COUNTY BENCHMARK NO. 7C01 19E6 - RIVET AND PLATE IN TOP OF CURB SOUTHEAST RETURN OF RANCHO DRIVE AND CORAN LANE.

NAVD 1988 DATUM
ELEVATION = 656.6065 METERS
2154.22 FEET



Department of Public Works
U.S. 95 / RANCHO SEWER - PHASE IB
PLAN AND PROFILE
STA 17+00.00 TO STA 26+00.00

DRAWING No. 6
PP02
PLAN# 307-V799