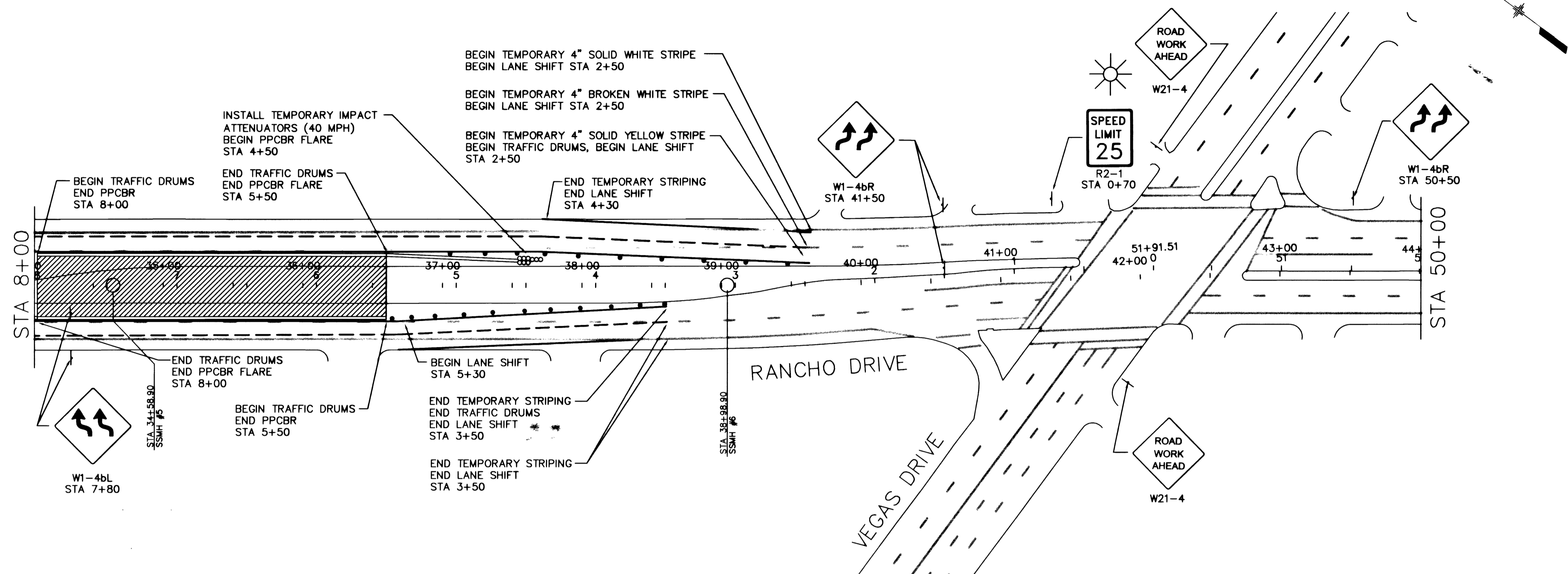


PHASE 3-A



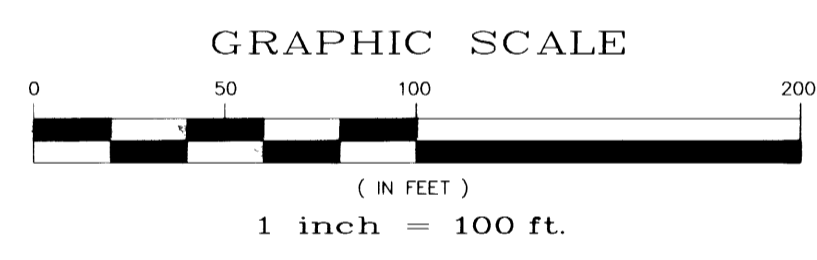
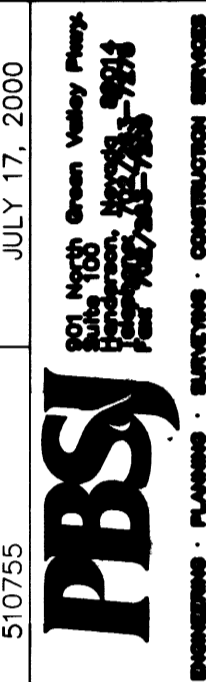
LEGEND

- CONSTRUCTION SIGN
- TRAFFIC DRUM
- TYPE C ARROWBOARD
- TYPE III B BARRICADE
- PORTABLE PRECAST CONCRETE BARRIER RAIL
- TEMPORARY IMPACT ATTENUATOR (40 mph)
- TEMPORARY 4" SOLID STRIPE
- TEMPORARY 4" BROKEN WHITE STRIPE
- WORK ZONE
- TYPE B WARNING LIGHT

REVISIONS

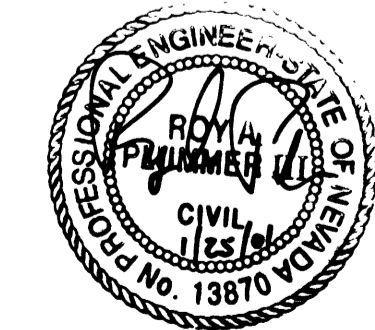
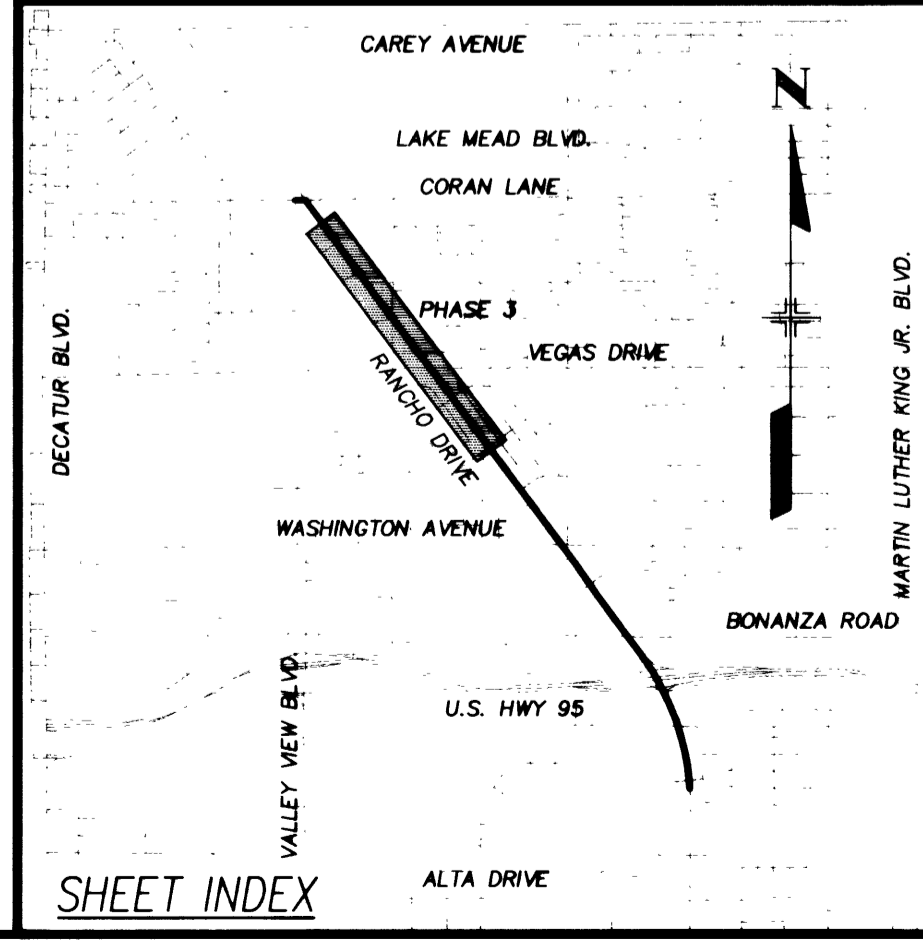
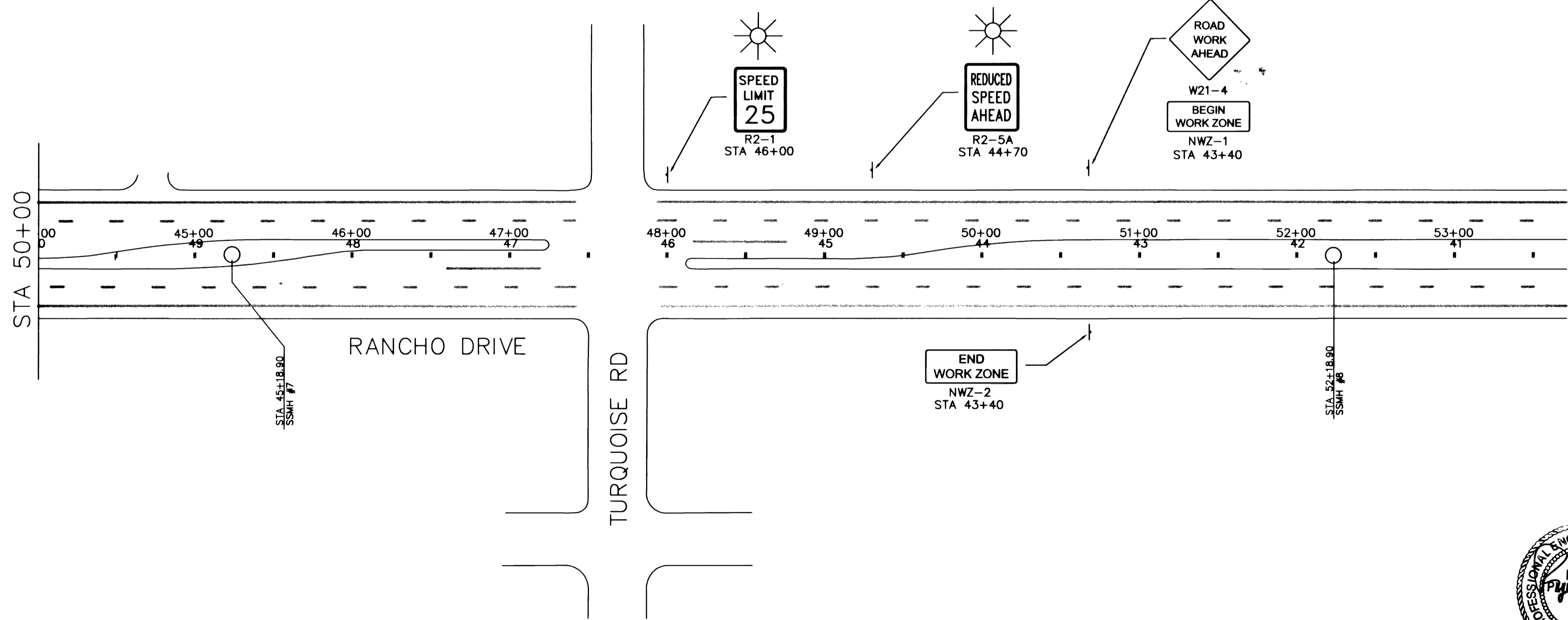
NO.	DATE	DESCRIPTION	APPROVED

US 95/RANCHO SEWER PHASE 3-A  
 DRAWN BY: J. HANAK  
 DESIGNED BY: R. PLUMMER  
 CHECKED BY: J. HANAK  
 DATE: JULY 17, 2000  
 JOB NO: 07075



**BASIS OF BEARING**  
 THE BASIS OF BEARING FOR THIS PROJECT IS GRID NORTH AS DEFINED BY THE NEVADA COORDINATE SYSTEM OF 1983 (NCS83), EAST ZONE, (2701), DETERMINED BY GIS CONTROL POINTS, "B25" AND "PUPPIES" AS SHOWN ON A RECORD OF SURVEY ON FILE IN THE CLARK COUNTY RECORDER'S OFFICE, IN FILE 88 OF SURVEYS, AT PAGE 53.

**BENCHMARK**  
 CLARK COUNTY BENCHMARK NO. 7001 1966 - RIVET AND PLATE IN TOP OF CURB SOUTHEAST RETURN OF RANCHO DRIVE AND CORAN LANE.  
 NAVD 1988 DATUM  
 ELEVATION = 656.6065 METERS  
 2154.22 FEET



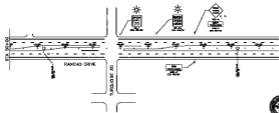
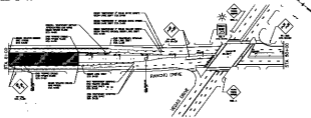
Department of Public Works

U.S. 95 / RANCHO SEWER  
 TRAFFIC CONTROL PLAN



307-7999  
 DRAWING No. 14  
 TC 14

PHASE 3-A



- LEGEND
- CONSTRUCTION SIGN
  - TRAFFIC SIGN
  - TYPE II ARROWBOARD
  - TYPE III ARROWBOARD
  - PORTABLE IMPACT ATTENUATION (PIA) SYSTEM
  - TEMPORARY TRAFFIC CONTROL (TTC) ZONE
  - TEMPORARY TRAFFIC CONTROL (TTC) ZONE
  - TEMPORARY TRAFFIC CONTROL (TTC) ZONE
  - WORK ZONE
  - TYPE II WARNING LIGHT



DATE OF REVIEW: 10/15/2014  
 PROJECT: PHASE 3-A  
 DRAWING NO.: 10/15/2014-001  
 DRAWN BY: [Name]  
 CHECKED BY: [Name]  
 APPROVED BY: [Name]



Department of Public Works U.S. DE. OF TRANSPORTATION FEDERAL AID DISTRICT OFFICE	REVISIONS
	[Revision Table]
[Logo]	[Logo]