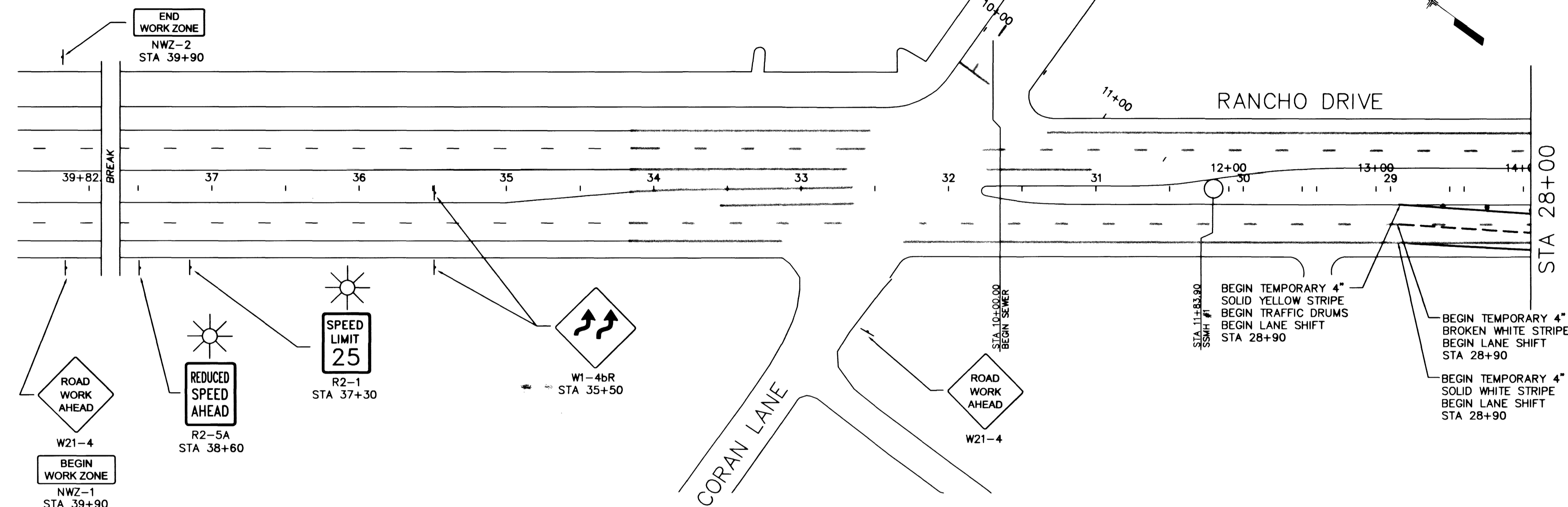


PHASE 2-B

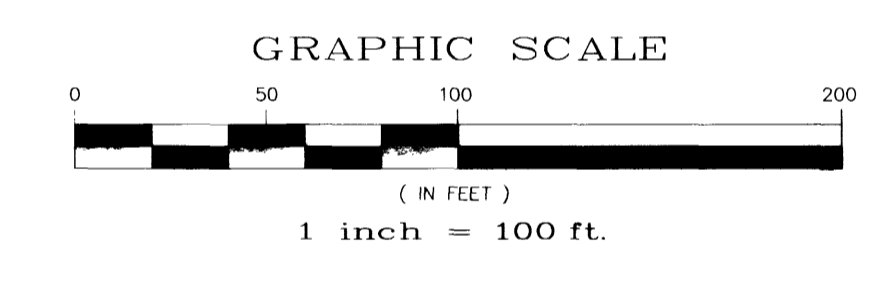
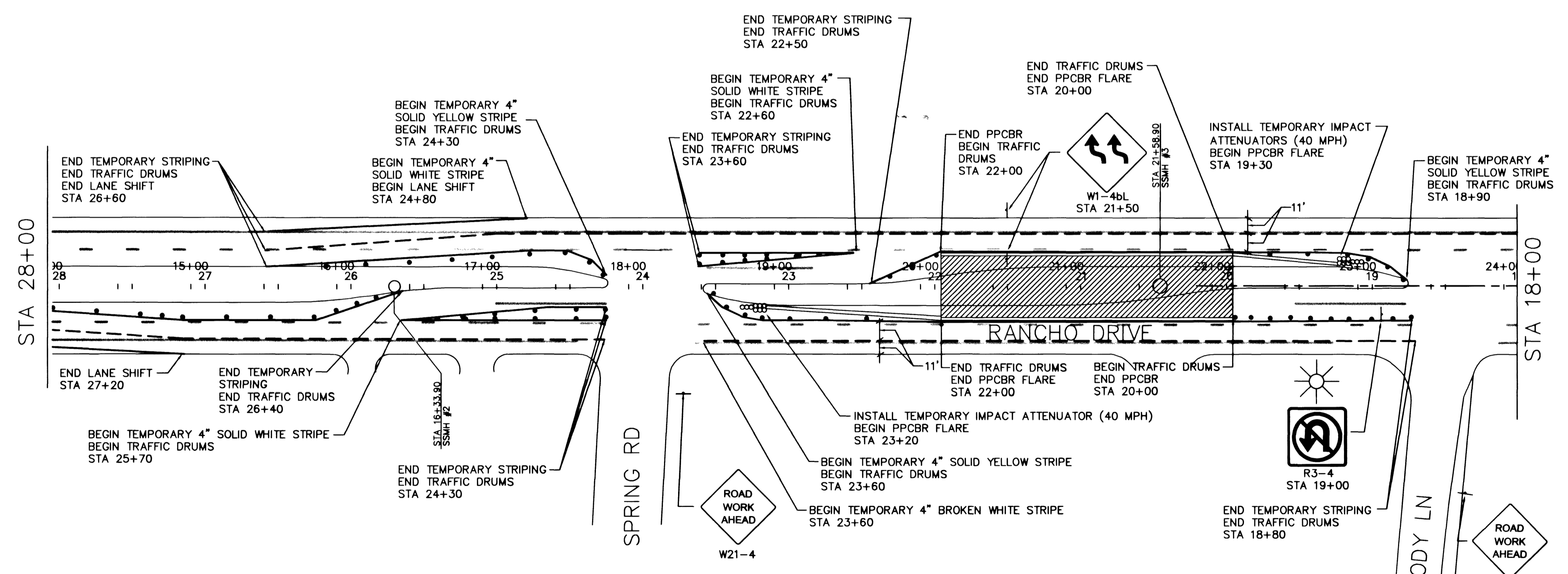


- LEGEND**
- CONSTRUCTION SIGN
  - TRAFFIC DRUM
  - TYPE C ARROWBOARD
  - TYPE IIIB BARRICADE
  - PORTABLE PRECAST CONCRETE BARRIER RAIL
  - TEMPORARY IMPACT ATTENUATOR (40 mph)
  - TEMPORARY 4" SOLID STRIPE
  - TEMPORARY 4" BROKEN WHITE STRIPE
  - WORK ZONE
  - TYPE B WARNING LIGHT

REVISIONS		US 95/RANCHO SEWER PHASE II B	
NO.	DATE	DESCRIPTION	APPROVED

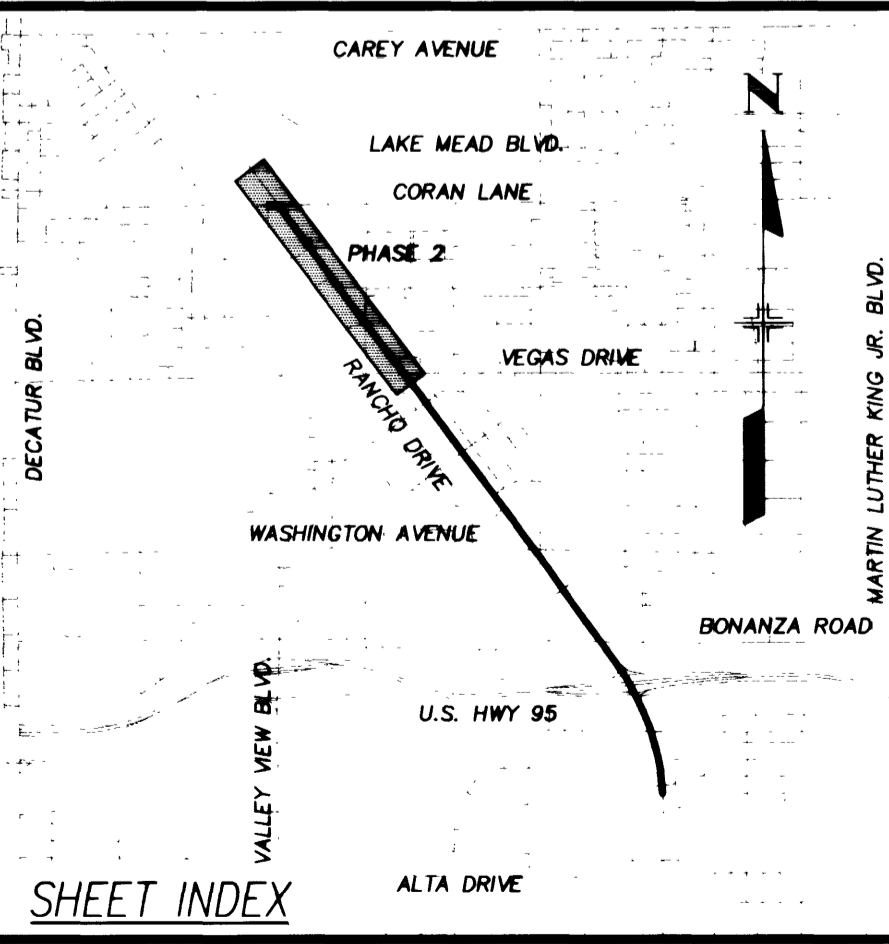
DESIGNED BY: J. HANAK	CHECKED BY: R. PLUMMER	DATE: JULY 17, 2000
DRAWN BY: J. HANAK	DATE: JULY 17, 2000	
JOB NO: 310735		

**PBS**  
 PROFESSIONAL BUSINESS SERVICES - SURVEYING - CONSTRUCTION SERVICES



**BASIS OF BEARING**  
 THE BASIS OF BEARING FOR THIS PROJECT IS GRID NORTH AS DEFINED BY THE NEVADA COORDINATE SYSTEM OF 1983 (NCS83), EAST ZONE, (2701), DETERMINED BY GIS CONTROL POINTS, "B25" AND "PUPPIES" AS SHOWN ON A RECORD OF SURVEY ON FILE IN THE CLARK COUNTY RECORDER'S OFFICE, IN FILE 88 OF SURVEYS, AT PAGE 53.

**BENCHMARK**  
 CLARK COUNTY BENCHMARK NO. 7C01 19E6 - RIVET AND PLATE IN TOP OF CURB SOUTHEAST RETURN OF RANCHO DRIVE AND CORAN LANE.  
 NAVD 1988 DATUM  
 ELEVATION = 656.6065 METERS  
 2154.22 FEET



Department of Public Works  
 U.S. 95 / RANCHO SEWER  
 TRAFFIC CONTROL PLAN

**CITY OF LAS VEGAS**  
 NEVADA

307-799  
 DRAWING No. 10  
 TC 10

32/17  
 10/55

