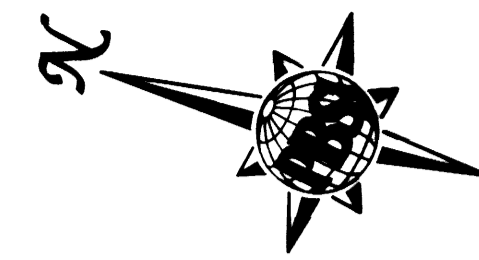
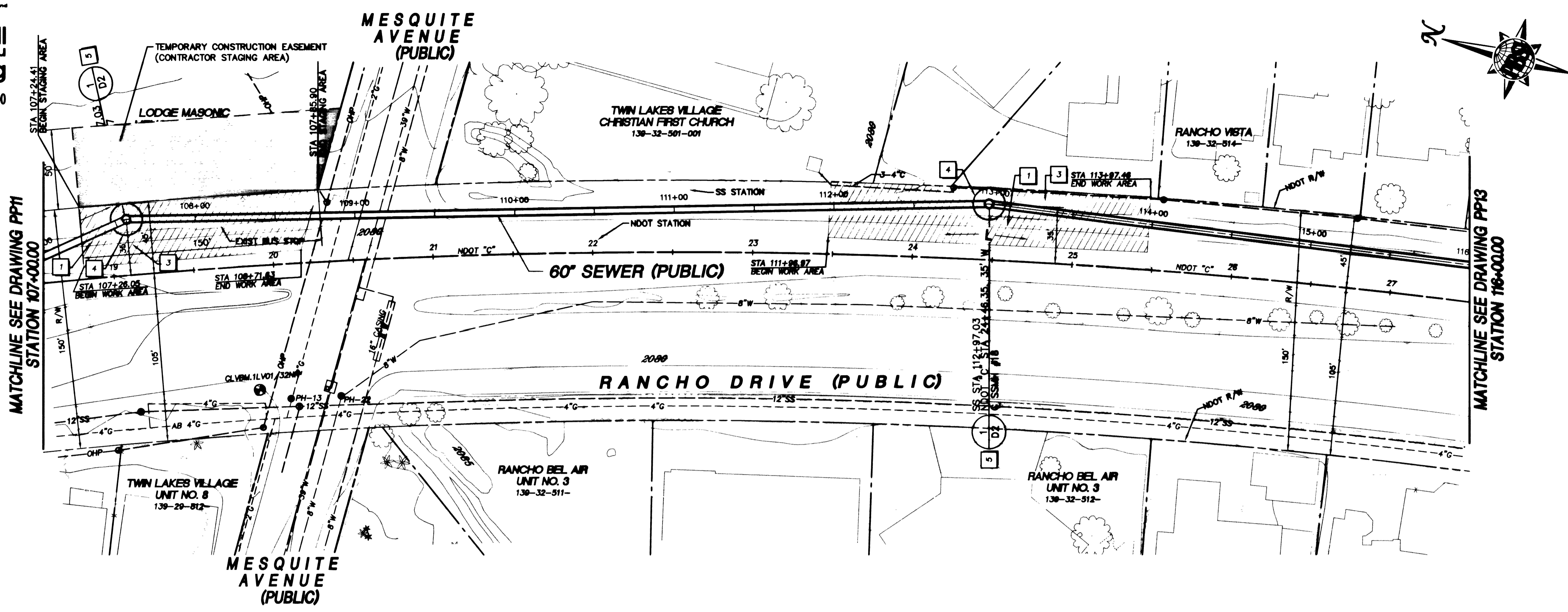


Call before you Dig
1-800-227-2600



- KEY NOTES**
- 1 - REMOVE AND REPLACE EXISTING TRAFFIC ISLAND AS REQUIRED FOR CONSTRUCTION WITHIN WORK AREA LIMITS SHOWN. SEE DETAIL 3, DWG D1
 - 2 - REMOVE AND REPLACE EXISTING CONCRETE CURB, GUTTER AND SIDEWALK AS REQUIRED
 - 3 - SAWCUT, REMOVE AND REPLACE EXISTING PAVEMENT DAMAGED DURING CONSTRUCTION WITHIN WORK AREA LIMITS SHOWN. SEE DETAIL 1, DWG D1
 - 4 - CONSTRUCT TUNNEL ACCESS SHAFT / JACKING PIT
 - 5 - CONSTRUCT NEW MANHOLE

HATCH LEGEND

WORK AREA (LIMITS OF CONSTRUCTION ACTIVITIES) [Hatched pattern]

TEMPORARY CONSTRUCTION EASEMENT [Double line pattern]

PERMANENT UTILITY EASEMENT [Single line pattern]

Call before you Dig
1-702-593-6111
NEVADA POWER ENVIRONMENT AND SAFETY SERVICES DEPARTMENT

Call before you Dig
1-800-227-2600
UNDERGROUND SERVICE (USA)

LEGEND:
L - LAUNCH PIT
R - RECEIVING PIT

CAUTION:
EXISTING UTILITIES ARE LOCATED ON THE PLANS FROM A SEARCH OF AVAILABLE RECORDS. CONTRACTOR TO VERIFY LOCATIONS AND DEPTHS PRIOR TO CONSTRUCTION.

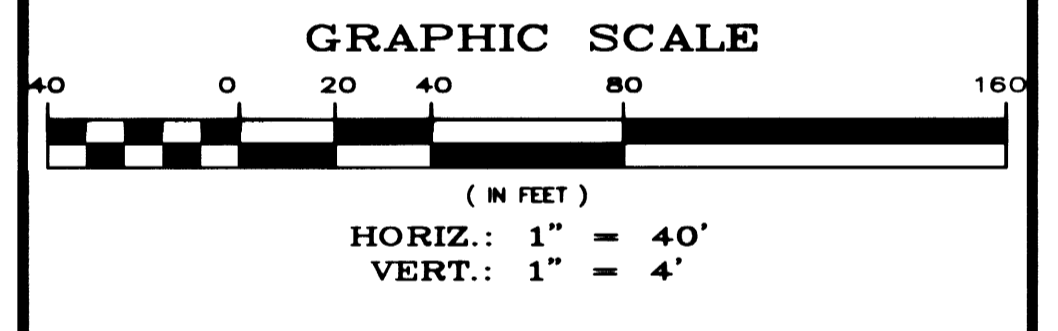
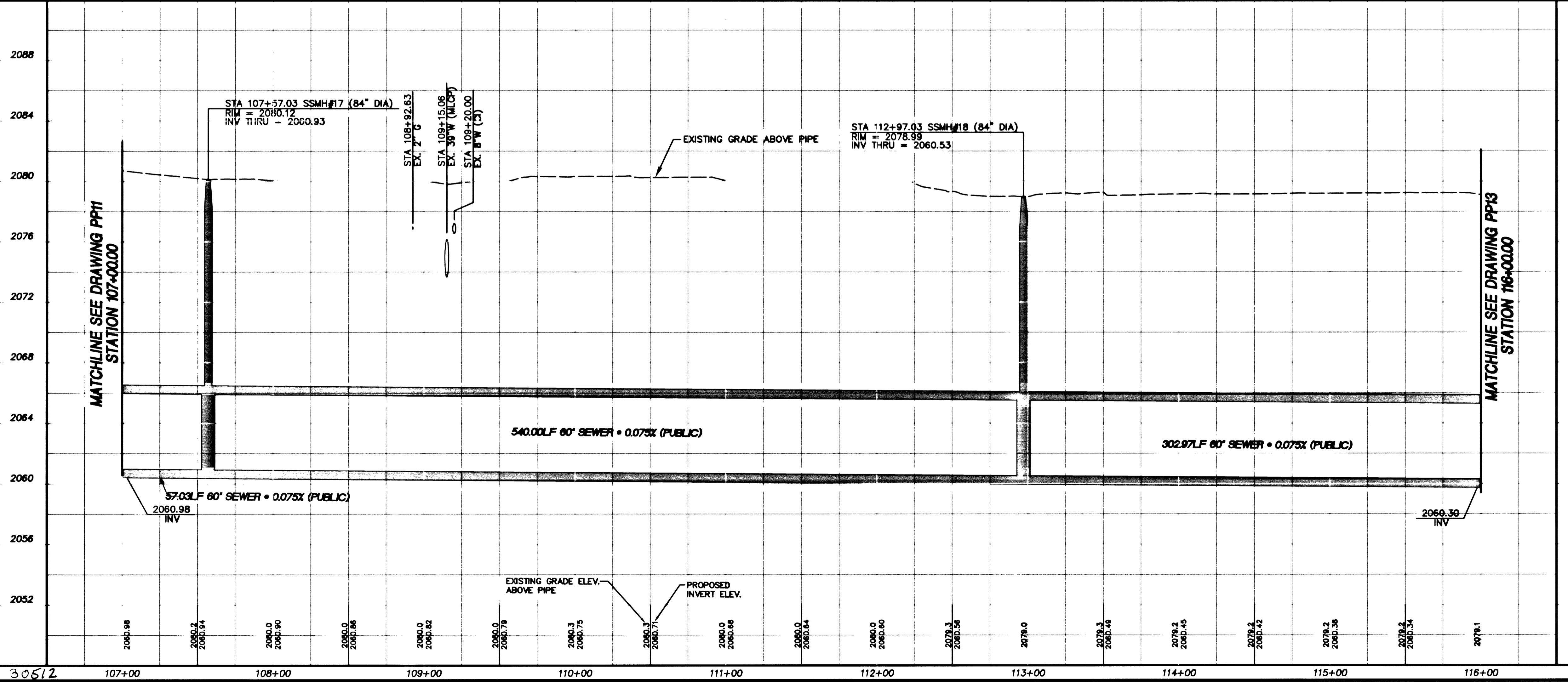
REVISIONS

NO.	DATE	DESCRIPTION	APPROVED

US 95/RANCHO SEWER PHASE IB
DESIGNED BY: A. SPATA
CHECKED BY: L. ATWELL
DATE: NOV. 9, 2000
JOB NO.: 510755

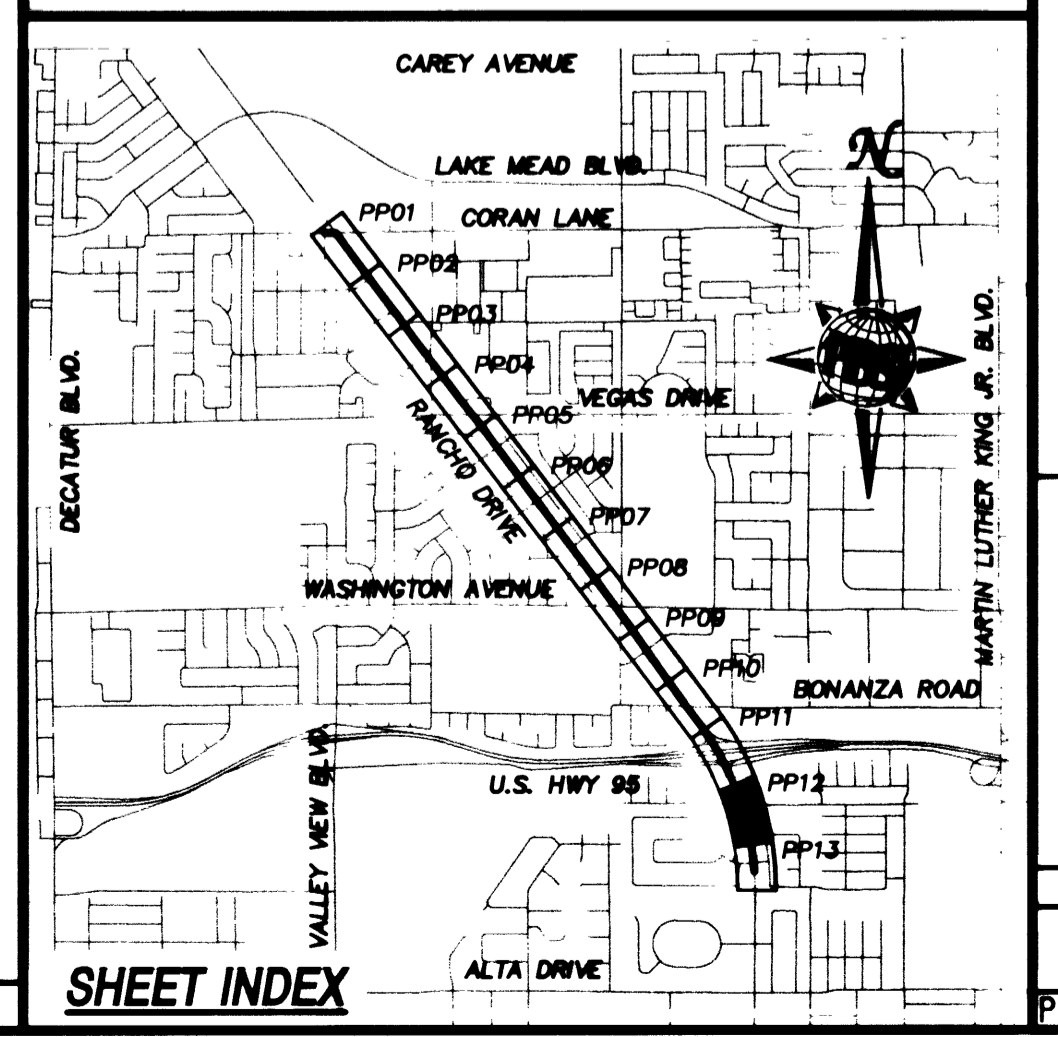
PBSJ

PROFESSIONAL ENGINEER - STATE OF NEVADA
JAMES J. TUCKER
No. 9993
11/1/00



BASIS OF BEARING
THE BASIS OF BEARING FOR THIS PROJECT IS GRID NORTH AS DEFINED BY THE NEVADA COORDINATE SYSTEM OF 1983 (NCS83), EAST ZONE, (2701), DETERMINED BY GIS CONTROL POINTS, "B25" AND "PUPPIES" AS SHOWN ON A RECORD OF SURVEY ON FILE IN THE CLARK COUNTY RECORDER'S OFFICE, IN FILE 88 OF SURVEYS, AT PAGE 53.

BENCHMARK
CLARK COUNTY BENCHMARK NO. 7C01 19E8 - RIVET AND PLATE IN TOP OF CURB SOUTHEAST RETURN OF RANCHO DRIVE AND CORAN LANE.
NAVD 1988 DATUM
ELEVATION = 656.6065 METERS
2154.22 FEET

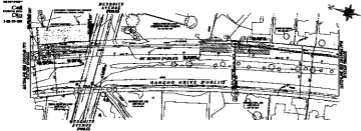


Department of Public Works

U.S. 95 / RANCHO SEWER - PHASE IB
PLAN AND PROFILE
STA 107+00.00 TO STA 116+00.00

CITY OF LAS VEGAS
NEVADA

DRAWING No. 16
PP12
PLAN# 307-V799



LEGEND
 1 - LAMINATED
 2 - REINFORCED CONCRETE

- NOTES**
1. SEE ARCHITECTURAL DRAWING FOR DETAILS.
 2. SEE ARCHITECTURAL DRAWING FOR DETAILS.
 3. SEE ARCHITECTURAL DRAWING FOR DETAILS.
 4. SEE ARCHITECTURAL DRAWING FOR DETAILS.
 5. SEE ARCHITECTURAL DRAWING FOR DETAILS.
 6. SEE ARCHITECTURAL DRAWING FOR DETAILS.

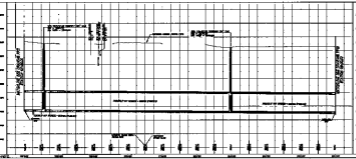
REVISIONS

NO.	DATE	DESCRIPTION

BY: _____
 CHECKED: _____
 DATE: _____

SCALE: _____

PROJECT: _____



GRAPHIC SCALE

1" = 10'-0"

NOTES

1. SEE ARCHITECTURAL DRAWING FOR DETAILS.
2. SEE ARCHITECTURAL DRAWING FOR DETAILS.
3. SEE ARCHITECTURAL DRAWING FOR DETAILS.
4. SEE ARCHITECTURAL DRAWING FOR DETAILS.
5. SEE ARCHITECTURAL DRAWING FOR DETAILS.
6. SEE ARCHITECTURAL DRAWING FOR DETAILS.

BY: _____
 CHECKED: _____
 DATE: _____

SCALE: _____

PROJECT: _____



REVISIONS

Department of Public Works

U.S. 86 / SARGENT SHRIVER - PHASE III

PLAN AND PROFILE

STA. 00+00.00 TO STA. 118+00.00