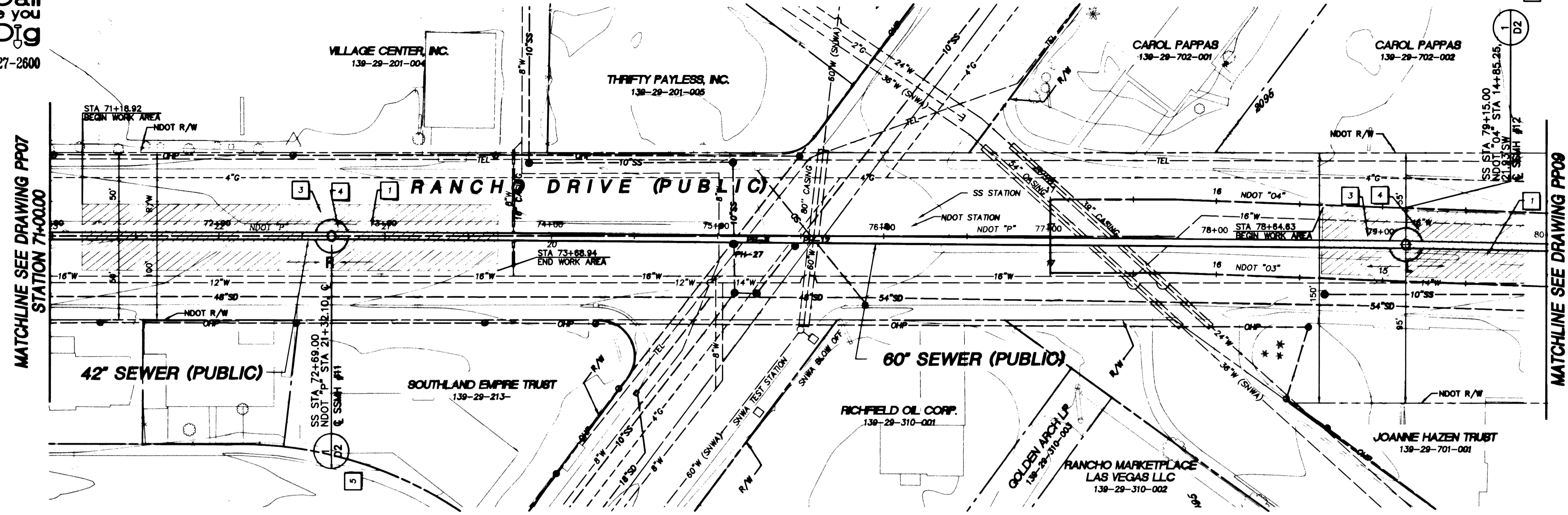
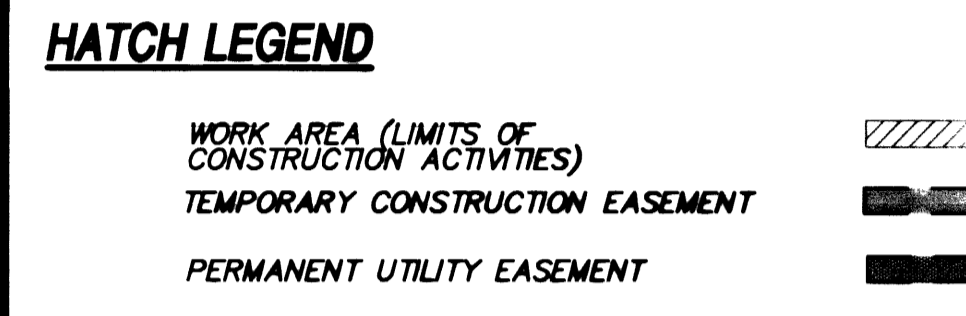


Avoid cutting underground utility lines. It's costly.
Call before you Dig
 1-800-227-2600

WASHINGTON AVENUE (PUBLIC)



- KEY NOTES**
- 1 - REMOVE AND REPLACE EXISTING TRAFFIC ISLAND AS REQUIRED FOR CONSTRUCTION WITHIN WORK AREA LIMITS SHOWN. SEE DETAIL 3, DWG D1
 - 2 - REMOVE AND REPLACE EXISTING CONCRETE CURB, GUTTER AND SIDEWALK AS REQUIRED
 - 3 - SAWCUT, REMOVE AND REPLACE EXISTING PAVEMENT DAMAGED DURING CONSTRUCTION WITHIN WORK AREA LIMITS SHOWN. SEE DETAIL 1, DWG D1
 - 4 - CONSTRUCT TUNNEL ACCESS SHAFT / JACKING PIT
 - 5 - CONSTRUCT NEW MANHOLE



SNWA CONSTRUCTION NOTE

CONTRACTOR SHALL FIELD LOCATE AND PROTECT ALL SNWA/SNWS APPURTENANCES INCLUDING, BUT NOT LIMITED TO AV/AR, ACCESS MANWAYS & CATHODIC PROTECTION SYSTEMS PRIOR TO CONSTRUCTION. ALL ABOVE GROUND STRUCTURES AND AT GRADE STRUCTURES MUST BE ADJUSTED TO NEW GRADE AT CONTRACTOR'S EXPENSE. CONTRACTOR TO NOTIFY RICK DUSEK AT (702) 862-3444 AT LEAST 48-HOURS PRIOR TO CONSTRUCTION ACTIVITY.

SNWA APPROVAL IS VALID FOR ONE (1) YEAR FROM THE SIGNATURE DATE IF CONSTRUCTION WITHIN THE EASEMENT OR RESTRICTED ZONE IS NOT COMPLETE, PLANS MUST BE RESUBMITTED TO SNWA FOR APPROVAL.

James Tucker 11/10/11
 SNWA SIGNATURE DATE

Call before you Overhead
 1-702-593-6111
 NEVADA POWER ENVIRONMENT AND SAFETY SERVICES DEPARTMENT

Call before you Dig
 1-800-227-2600
 UNDERGROUND SERVICE (USA)

LEGEND:
 L - LAUNCH PIT
 R - RECEIVING PIT

CAUTION
 EXISTING UTILITIES ARE LOCATED ON THE PLANS FROM A SEARCH OF AVAILABLE RECORDS. CONTRACTOR TO VERIFY LOCATIONS AND DEPTHS PRIOR TO CONSTRUCTION.

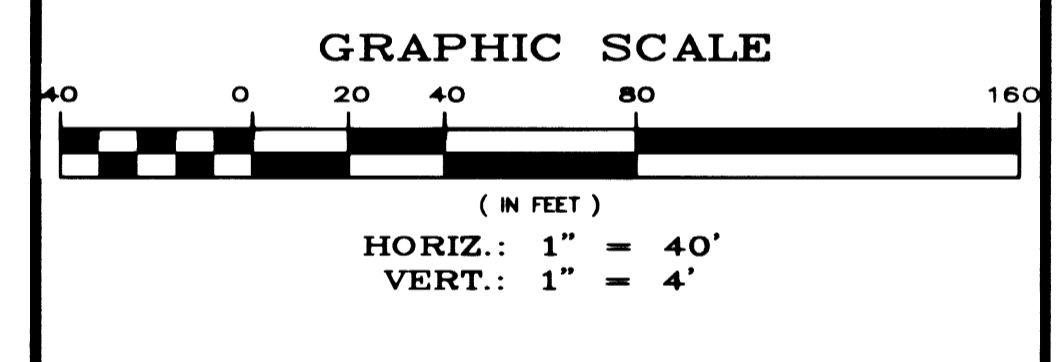
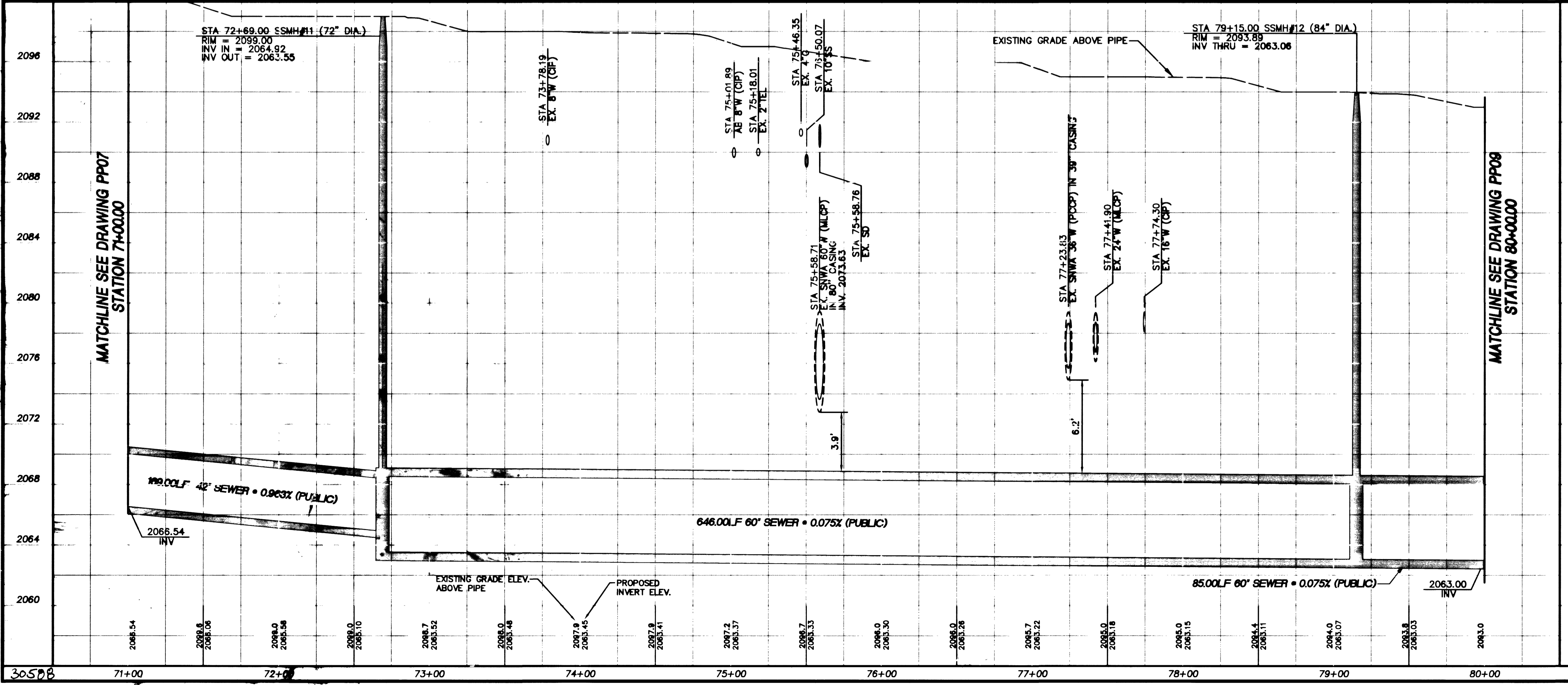
REVISIONS

NO.	DATE	DESCRIPTION	APPROVED

US 95/RANCHO SEWER PHASE IB
 PREPARED BY: L. ATWELL
 CHECKED BY: A. SPATA
 DATE: NOV. 9, 2000
 510755

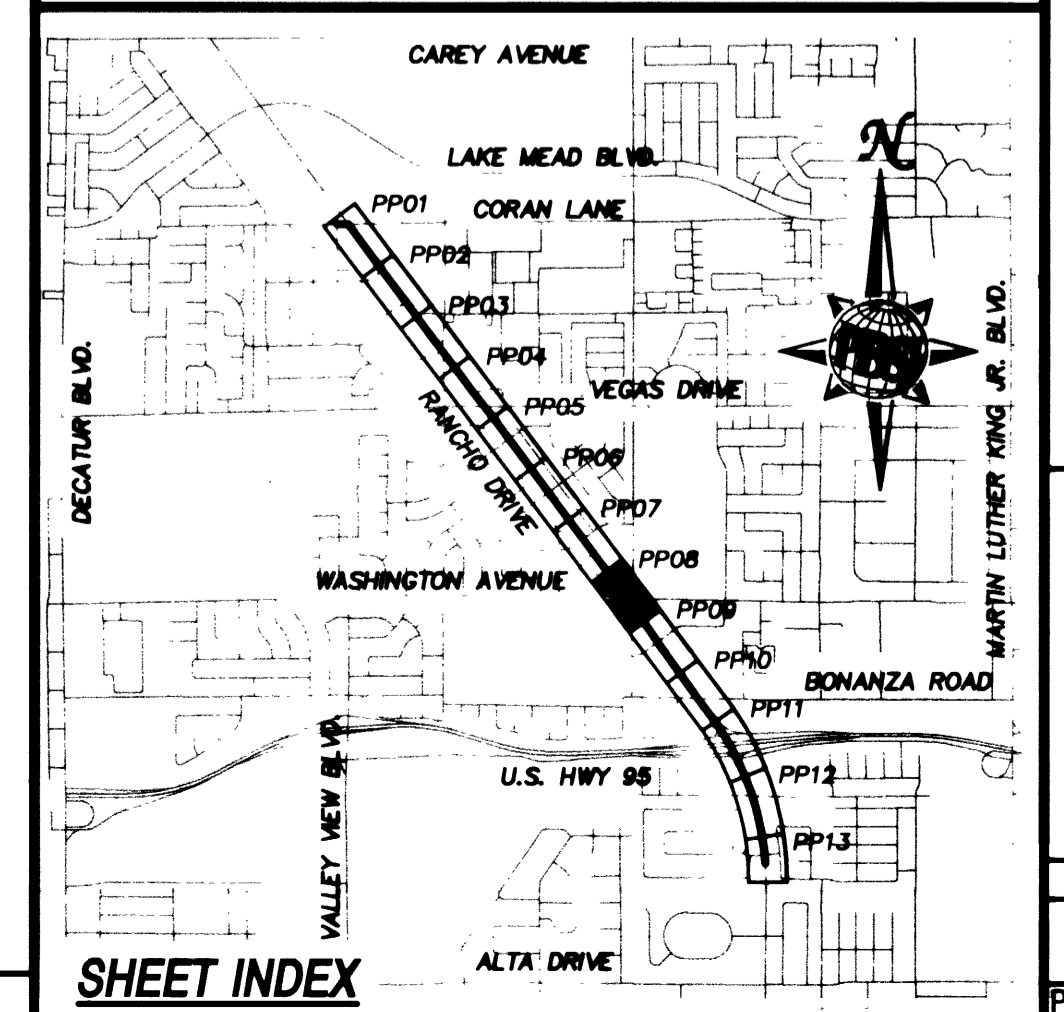
PBS

PROFESSIONAL ENGINEER-STATE OF NEVADA
 JAMES J. TUCKER
 CIVIL
 No. 9993
 11/10/11



BASIS OF BEARING
 THE BASIS OF BEARING FOR THIS PROJECT IS GRID NORTH AS DEFINED BY THE NEVADA COORDINATE SYSTEM OF 1983 (NCS83), EAST ZONE, (2701), DETERMINED BY GIS CONTROL POINTS, "B25" AND "PUPPIES" AS SHOWN ON A RECORD OF SURVEY ON FILE IN THE CLARK COUNTY RECORDER'S OFFICE, IN FILE 88 OF SURVEYS, AT PAGE 53.

BENCHMARK
 CLARK COUNTY BENCHMARK NO. 7C01 19E6 - RIVET AND PLATE IN TOP OF CURB SOUTHEAST RETURN OF RANCHO DRIVE AND CORAN LANE.
 NAVD 1988 DATUM
 ELEVATION = 656.6065 METERS
 2154.22 FEET



Department of Public Works

U.S. 95 / RANCHO SEWER - PHASE IB
 PLAN AND PROFILE
 STA 71+00.00 TO STA 80+00.00

CITY OF LAS VEGAS
 NEVADA

DRAWING No. 12
 PP08
 PLAN# 307-V799