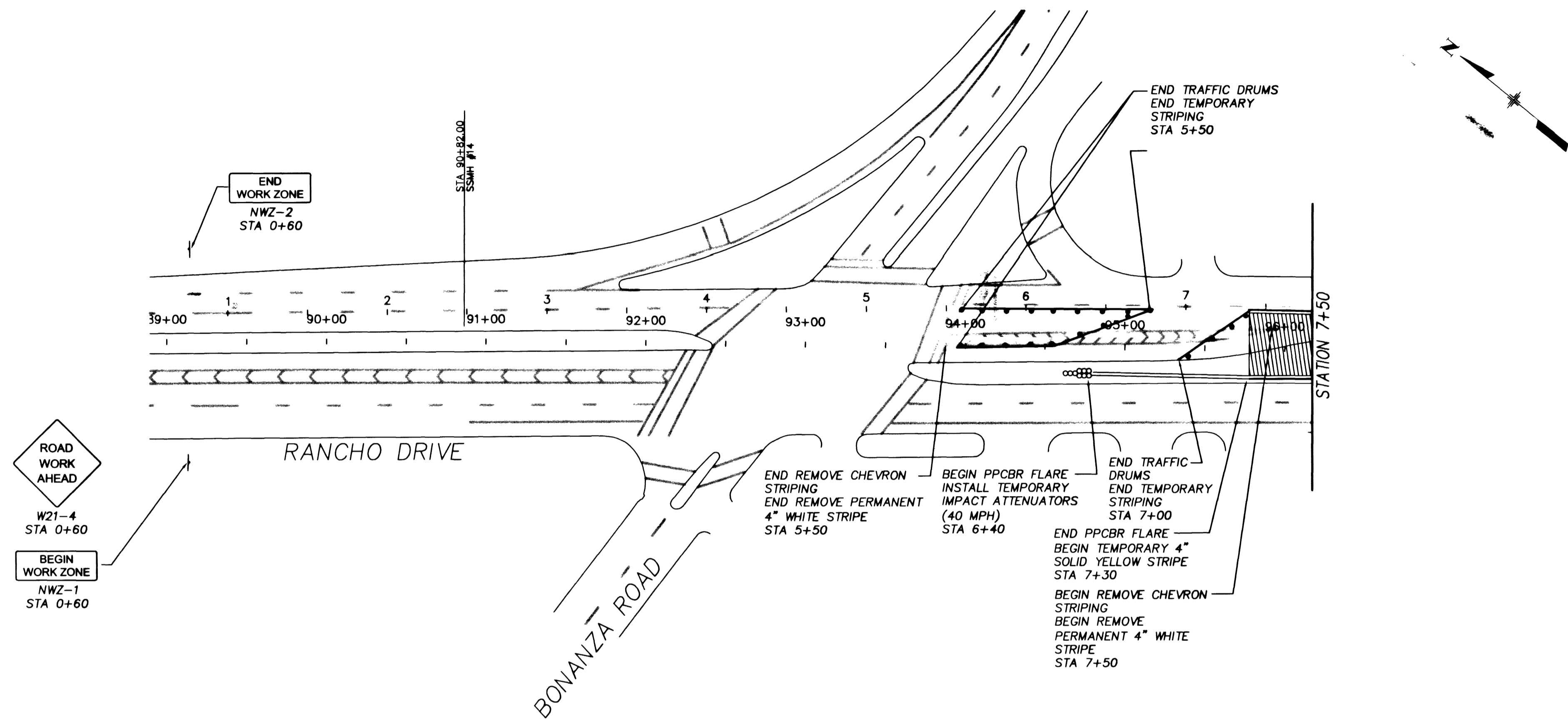


PHASE 8-B

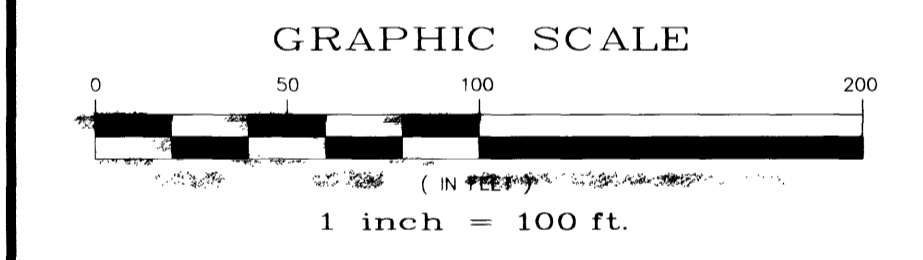


- LEGEND**
- CONSTRUCTION SIGN
 - TRAFFIC DRUM
 - TYPE C ARROWBOARD
 - TYPE III B BARRICADE
 - PORTABLE PRECAST CONCRETE BARRIER RAIL
 - TEMPORARY IMPACT ATTENUATOR (40 mph)
 - TEMPORARY 4" SOLID STRIPE
 - TEMPORARY 4" BROKEN WHITE STRIPE
 - WORK ZONE
 - TYPE B WARNING LIGHT

REVISIONS

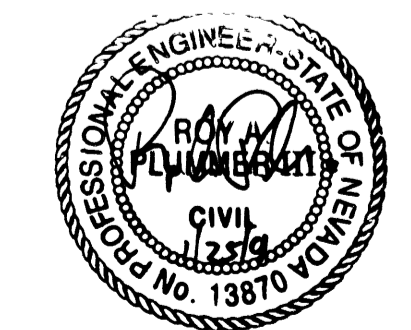
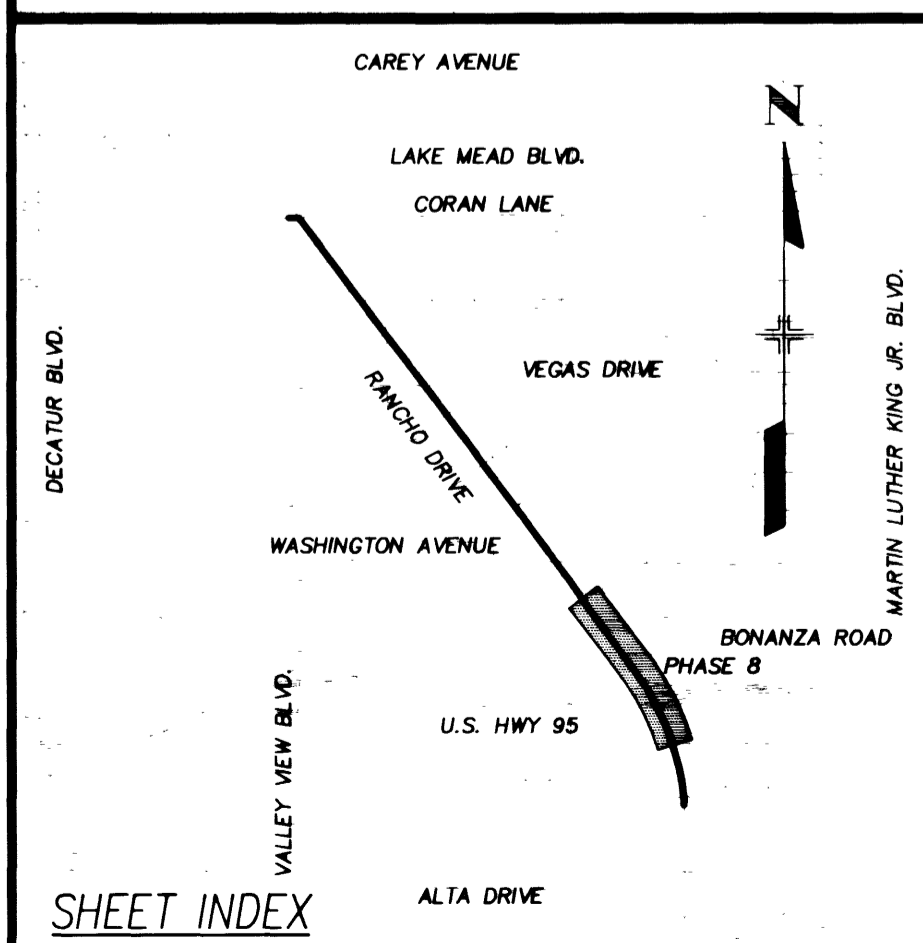
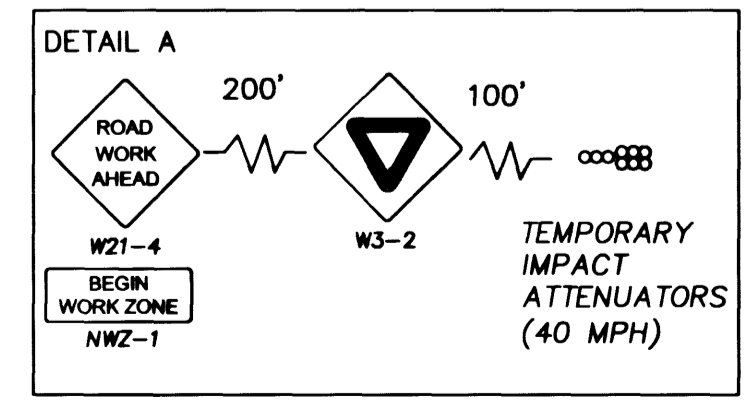
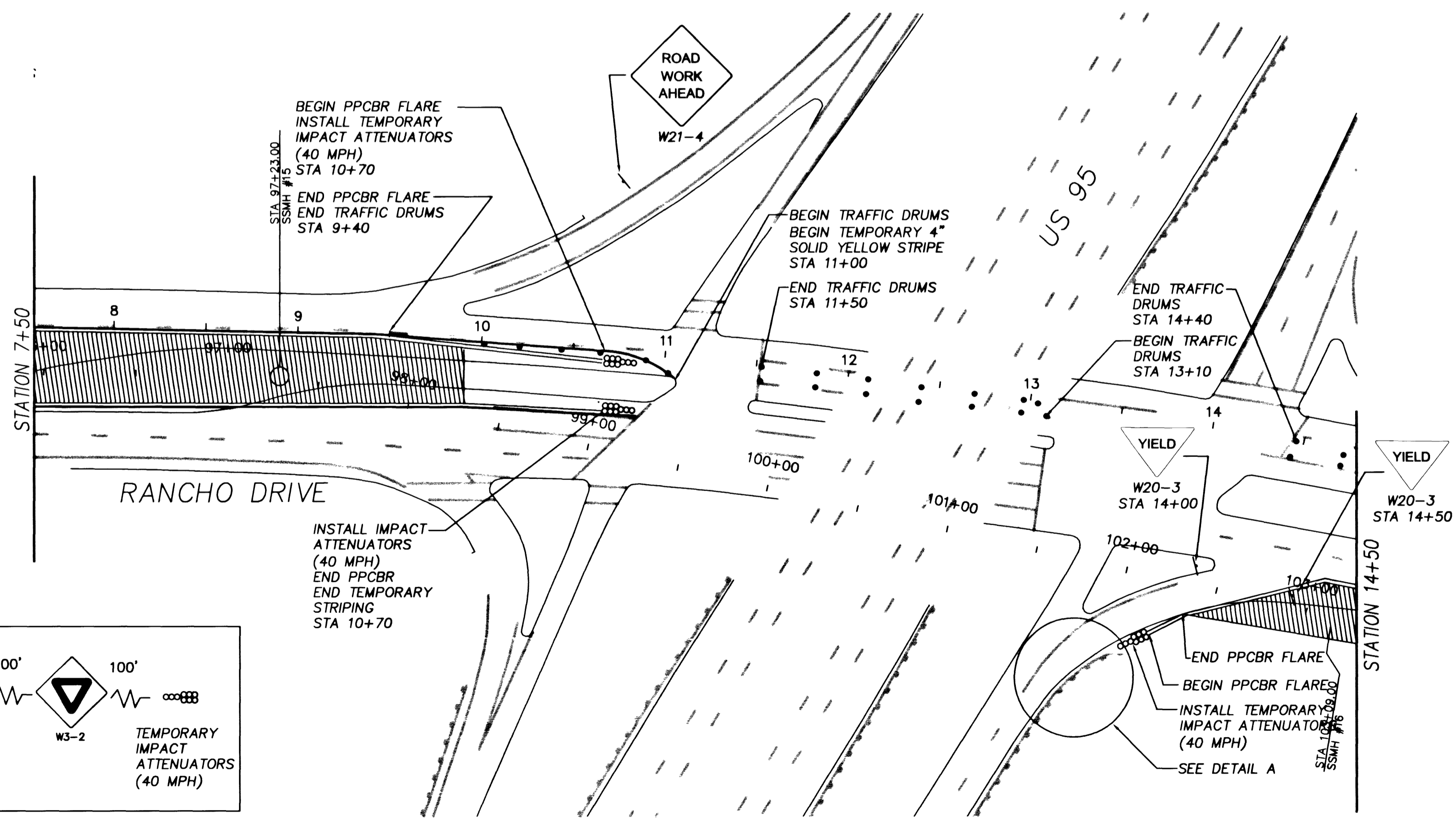
NO.	DATE	DESCRIPTION	APPROVED

US 95/RANCHO SEWER PHASE 8-B
 DRAWN BY: HANAK
 DESIGNED BY: S. REAK
 CHECKED BY: R. PLUMMER
 DATE: JULY 17, 2000
 PROJECT NO.: 510755
 SHEET NO.: 47
 TOTAL SHEETS: 77
 PROJECT: U.S. 95/Rancho Valley Sewer
 DRAWING: TRAFFIC CONTROL PLAN
 PHASE: 8-B



BASIS OF BEARING
 THE BASIS OF BEARING FOR THIS PROJECT IS GRID NORTH AS DEFINED BY THE NEVADA COORDINATE SYSTEM OF 1983 (NCSB3), EAST ZONE, (2701), DETERMINED BY GIS CONTROL POINTS, "B25" AND "PUPPIES" AS SHOWN ON A RECORD OF SURVEY ON FILE IN THE CLARK COUNTY RECORDER'S OFFICE, IN FILE 88 OF SURVEYS, AT PAGE 53.

BENCHMARK
 CLARK COUNTY BENCHMARK NO. 7001 19E6 - RIVET AND PLATE IN TOP OF CURB SOUTHEAST RETURN OF RANCHO DRIVE AND CORAN LANE.
 NAVD 1988 DATUM
 ELEVATION = 656.6065 METERS
 2154.22 FEET



Department of Public Works

U.S. 95 / RANCHO SEWER TRAFFIC CONTROL PLAN

CITY OF LAS VEGAS
 NEVADA

307-7797
 DRAWING No. 47
 TC 47

77
 47
 55

