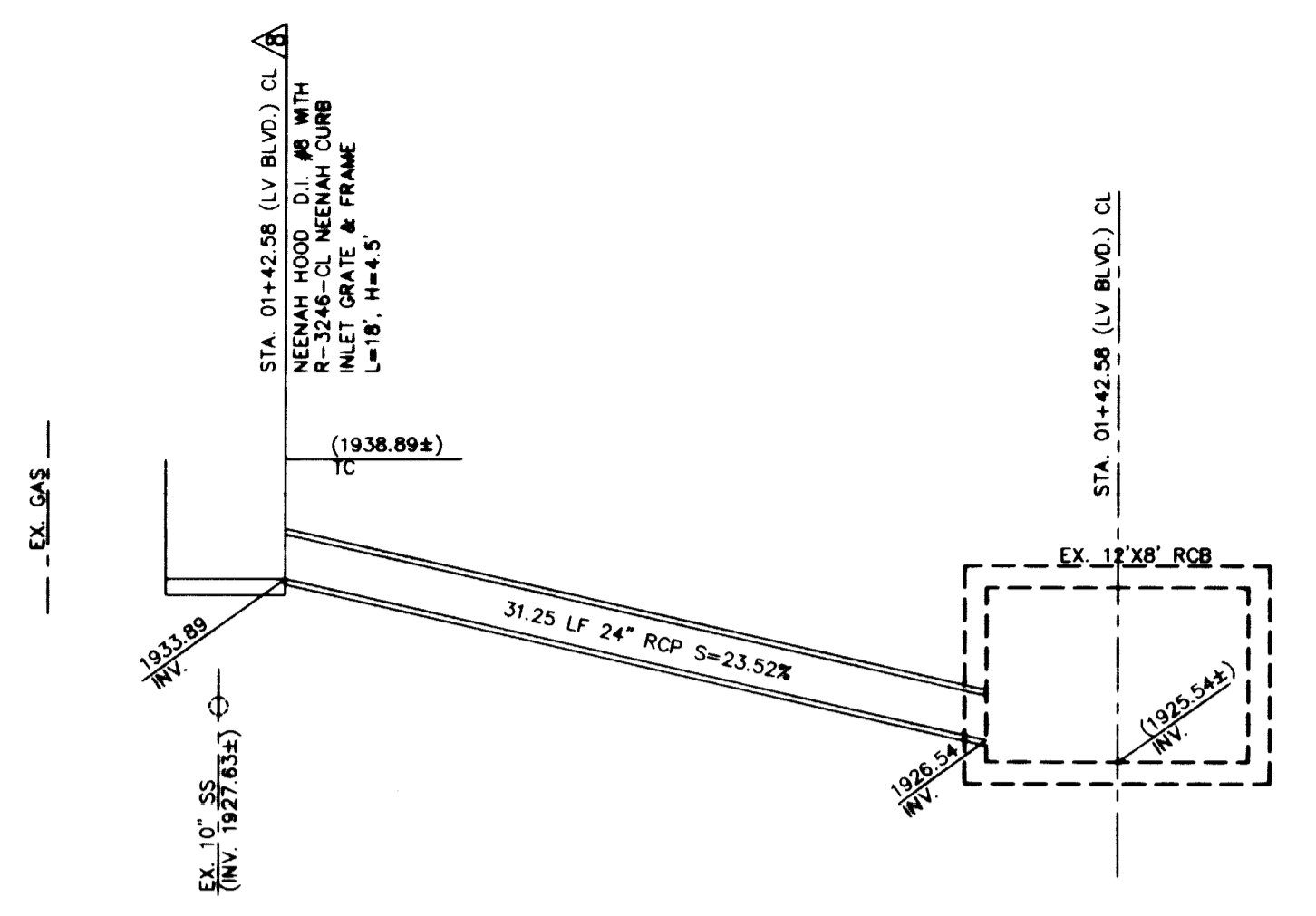
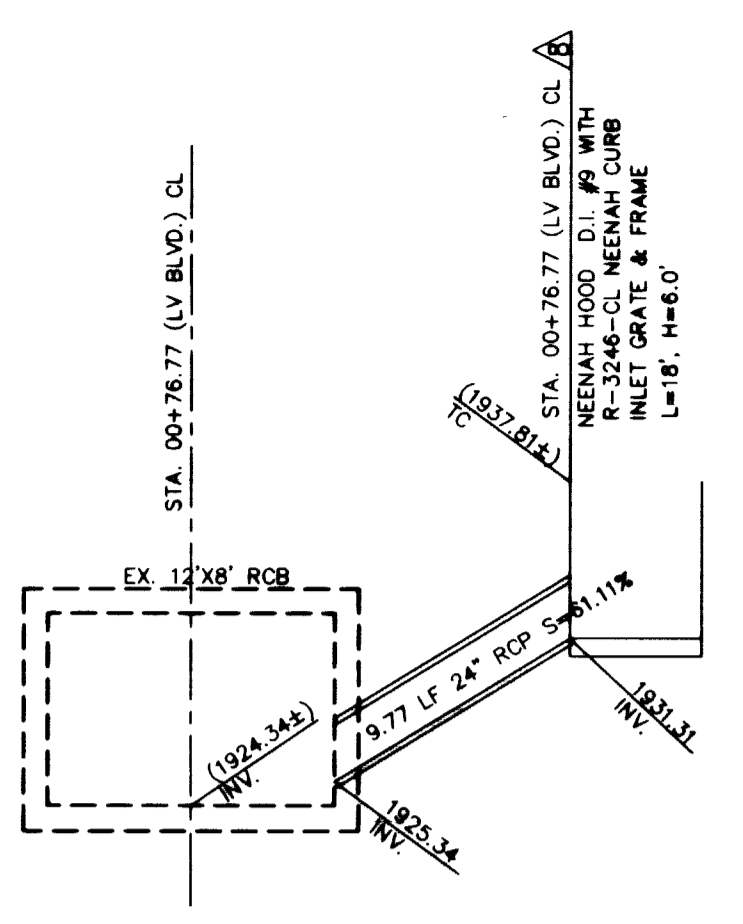


1940
1930
1920



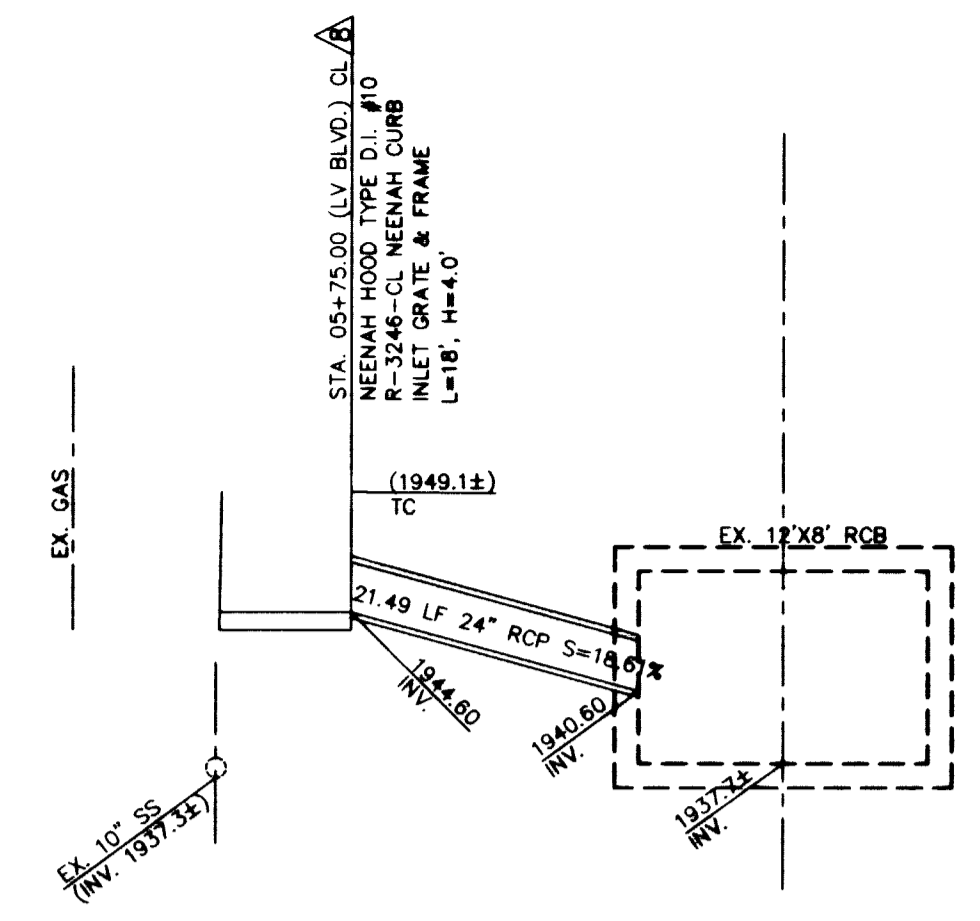
18' NEENAH HOOD DROP INLET 8
STA. 01+42.58 (LV BLVD.) NTS

1940
1930
1920



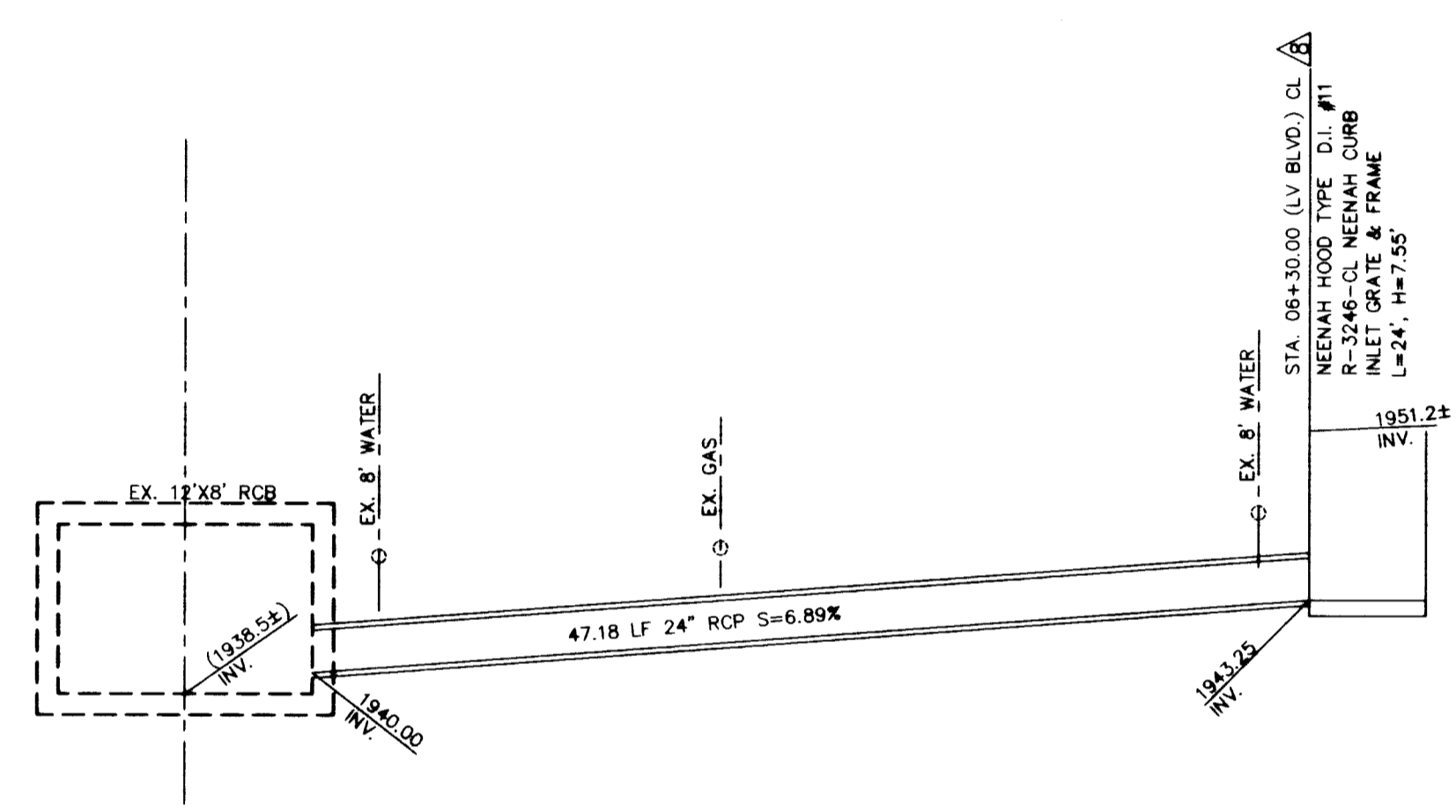
18' NEENAH HOOD DROP INLET 9
STA. 00+76.77 (LV BLVD.) NTS

1950
1940
1930



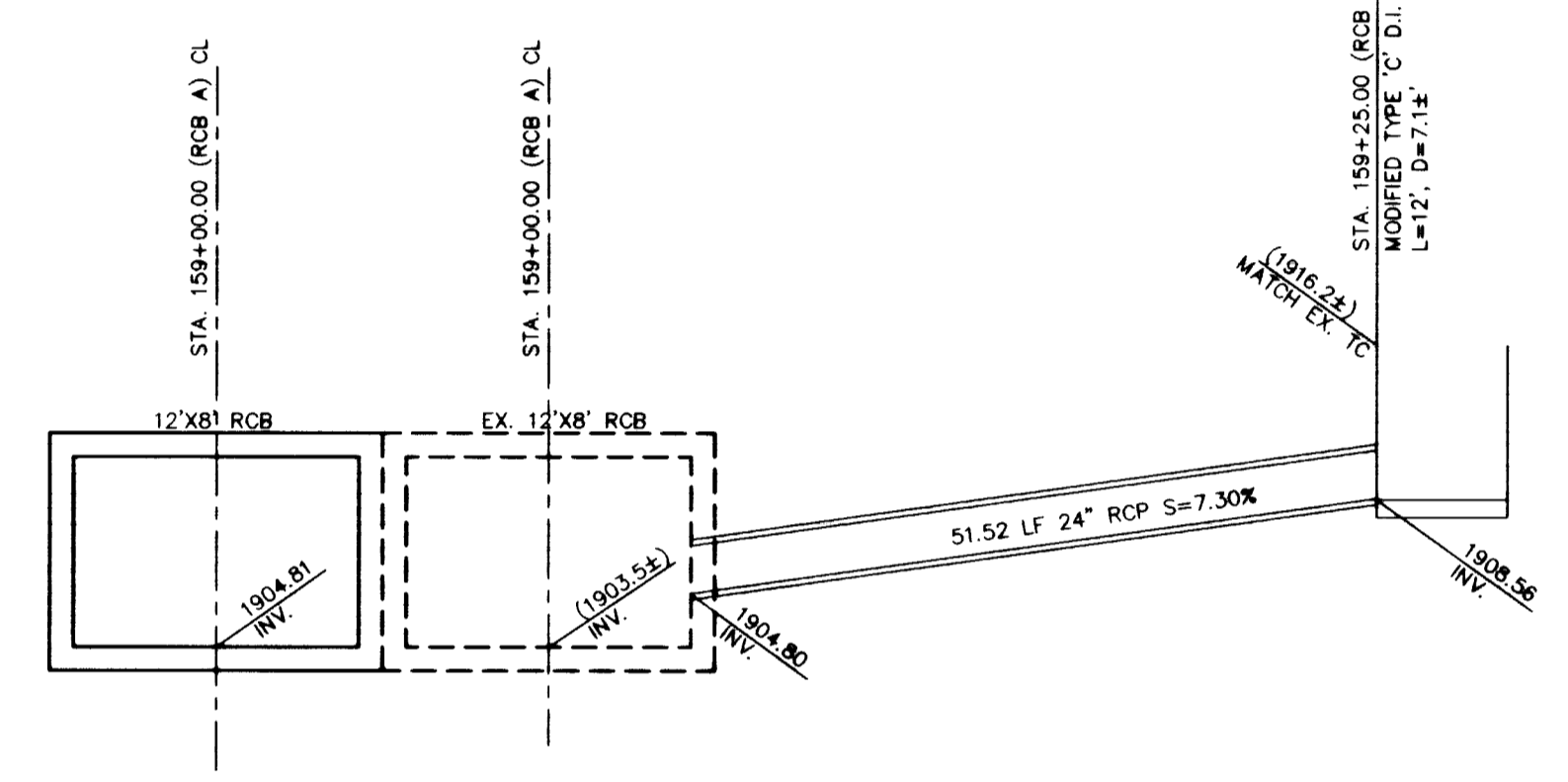
18' NEENAH HOOD DROP INLET 10
STA. 5+75.00 (LV BLVD.) NTS

1960
1950
1940



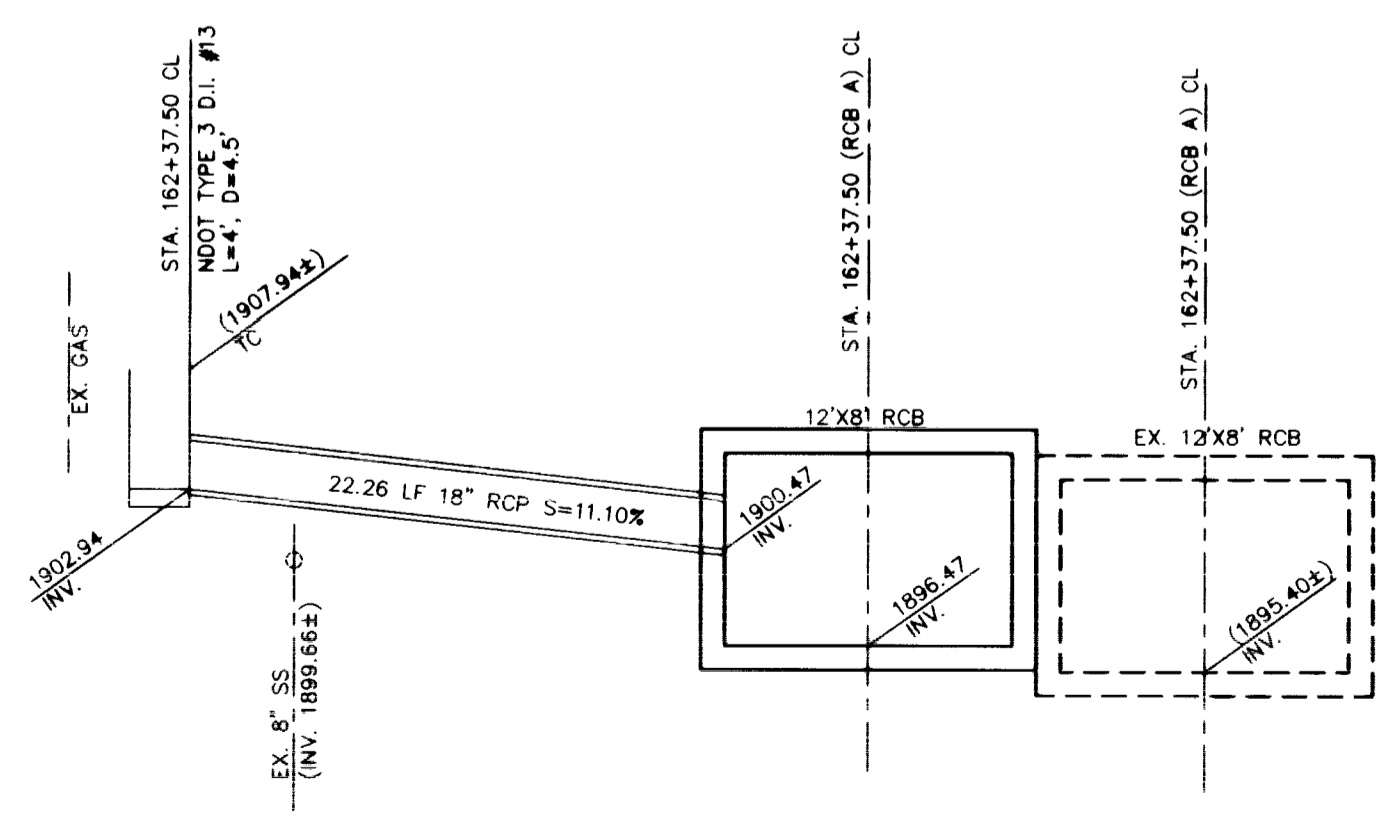
24' NEENAH HOOD DROP INLET 11
STA. 06+30.00 (LV BLVD.) NTS

1920
1910
1900



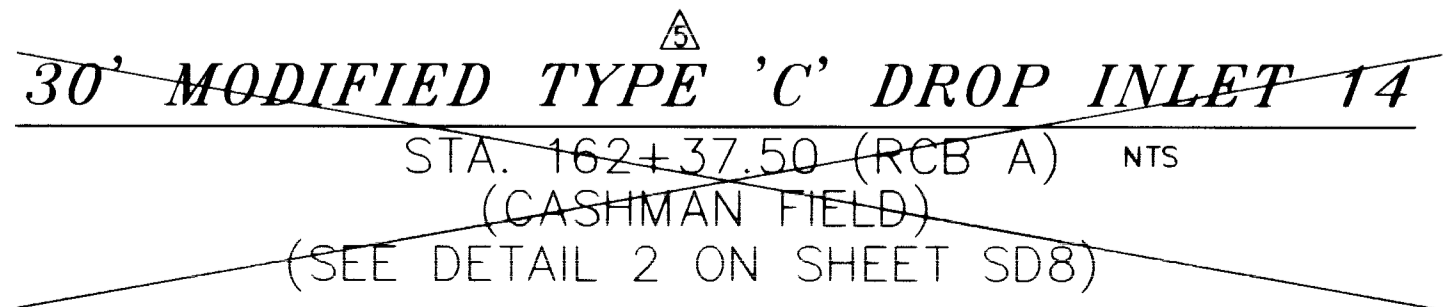
12' MODIFIED NDOT TYPE '11' DROP INLET 12
STA. 159+00 (RCB A) NTS
(SEE DETAIL 2 ON SHEET SD8)

1910
1900
1890



NDOT TYPE 3 DROP INLET 13
STA. 162+37.50 (RCB A) NTS
PER R-4.3.1.(609)

1910
1900
1890



30' MODIFIED TYPE 'C' DROP INLET 14
STA. 162+37.50 (RCB A) NTS
(CASHMAN FIELD)
(SEE DETAIL 2 ON SHEET SD8)

REVISIONS

No.	Date	Description	CHKD	APPD
1	7/28/99	MOD. TYPE 'C' TO NDOT TYPE '11' D.I.	GRB	S.F.
2	7/28/99	DELETED DROP INLET	GRB	S.F.
3	7/28/99	CHANGED D.I. FROM NDOT TYPE '11' TO NEENAH HOOD TYPE D.I.	GRB	S.F.

RECORD DRAWING
This drawing is to be used for record purposes only. It is not to be used for construction. The original drawing is the only one to be used for construction.

DESIGNED: JL/EP
DRAWN: LAH
CHECKED: 68L-95
JOB No.: AS NOTED
HORIZ: AS NOTED
VERT: AS NOTED
DATE: 12/01/98

Carter Burgess
Consultants in Engineering,
Planning and the Environment
2955 East Sunset Road, Suite 105
Las Vegas, NV 89120
(702) 998-1007 Fax (702) 998-7056

PROJECT: CITY OF LAS VEGAS
UPPER WASHINGTON AVENUE CONVEYANCE SYSTEM
DESCRIPTION: PHASE 1
DROP INLET PROFILES
PROJECT NO. 98.1730.21-RC

DRAWING NO. 731-54E
SHEET SD6
17 OF 35

