

**GENERAL NOTES**

- All work to conform to Las Vegas Valley Water District Standard Specification S-1 and standard plates.
- All work, except as modified herein, shall be done in accordance with Clark County Standard Specifications.
- Notice to be given Engineering Department of the Las Vegas Valley Water District 48 hours prior to actual construction.
- Service saddles or tapped collars will be required on all services, double tap collars are not permitted.
- Contractor to provide thrust blocks as required.
- All lines to be pressure tested to 200 psi. for 2 hours with C.C.F.D. Insp.
- All flanged fittings to be coated with EC-244, and wrapped with 6 mil thick polyethylene, two layers.
- All valve boxes shall have concrete collars at surface of paved areas.
- No other utility lines may be placed in same trench with water line.
- Parallel sewer and water lines shall have a minimum of 10 feet horizontal separation and 3 foot minimum vertical separation on all water lines.
- All water valves shall be operated only under the direction of the Water District.
- Deflection angle shall not exceed 5° per 13 foot section of pipe for pipe sizes smaller than 10 inches and shall not exceed 3° for pipe sizes 10 inches and larger.
- All water lines to be flushed to a velocity of 10 feet per second.
- Contractor to furnish & install meter boxes to District specifications.
- Service laterals for Lots 1 thru 10, inclusive, Block 3, Lots 57 thru 63, inclusive, Block 5, Lots 21 thru 23, inclusive, Block 1, will be tapped on existing main by owner's contractor under direction of the Las Vegas Valley Water District.

**NOTES:**

ALL SEWER CONSTRUCTION TO BE IN ACCORDANCE WITH THE UNIFORM STANDARD DRAWINGS FOR PUBLIC WORKS CONSTRUCTION CLARK COUNTY AREA. (1978 ED.)  
 USE CLASS 'A' BEDDING (SEE U.S.D. NO. SSI.2 AND SSI.1)  
 USE U.S.D. NO. S12.9 FOR MANHOLE AND WATER VALVE PROTECTION  
 ALL FIRE HYDRANTS TO BE LOCATED 18" BEHIND CURB.  
 ALL CONSTRUCTION TO BE IN ACCORDANCE WITH CITY OF LAS VEGAS FIRE DEPT.

**STREET LIGHTING**

ALL STREET LIGHTING INSTALLATIONS, EXCEPT AS NOTED ON THE STREET LIGHTING PLANS SHALL CONFORM TO THE STANDARD DETAILS FOR STREET LIGHTING AND TRAFFIC SIGNALS DRAWINGS 1-779 (INCLUDING STANDARD STREET LIGHTING NOTES) WITH REVISIONS NO LATER THAN MARCH 26, 1976. THESE INSTALLATIONS SHALL ALSO CONFORM TO THE UNIFORM STANDARD SPECIFICATIONS FOR PUBLIC WORKS CONSTRUCTION OF OFF-SITE IMPROVEMENTS, CLARK COUNTY AREA, NEVADA AND THE UNIFORM STANDARD DRAWINGS FOR PUBLIC WORKS CONSTRUCTION, CLARK COUNTY AREA, WHERE APPLICABLE. NEW SERVICE REQUIRED.

**ESTIMATE OF QUANTITIES**

ITEM	QUANTITY	UNIT
8" VCP	500	LF.
SEWER MANHOLE	3	EA.
8" ACP	500	LF.
8" TEE	1	EA.
8"x 6" TEE	1	EA.
8" GATE VALVE	1	EA.
6" GATE VALVE	1	EA.
STREET LIGHT	1	EA.
6" V.C.P. SEWER LATERAL	60	EA.

**APPROVALS**

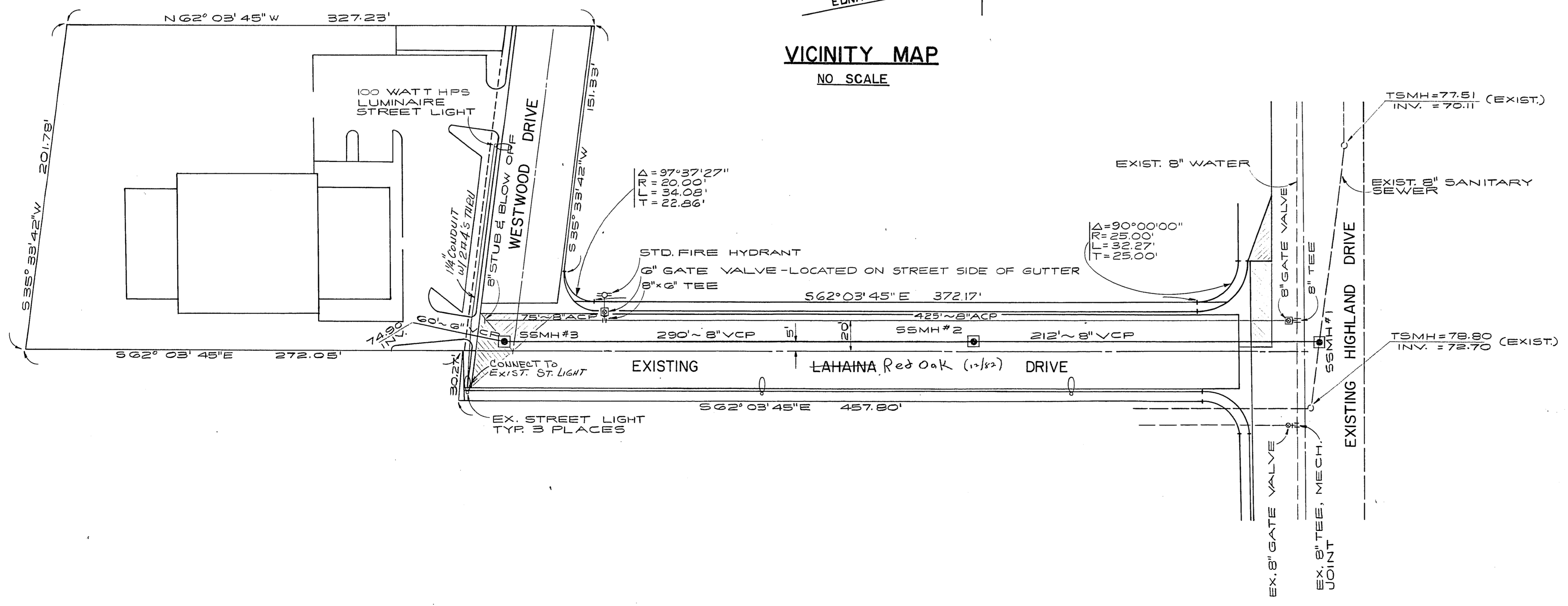
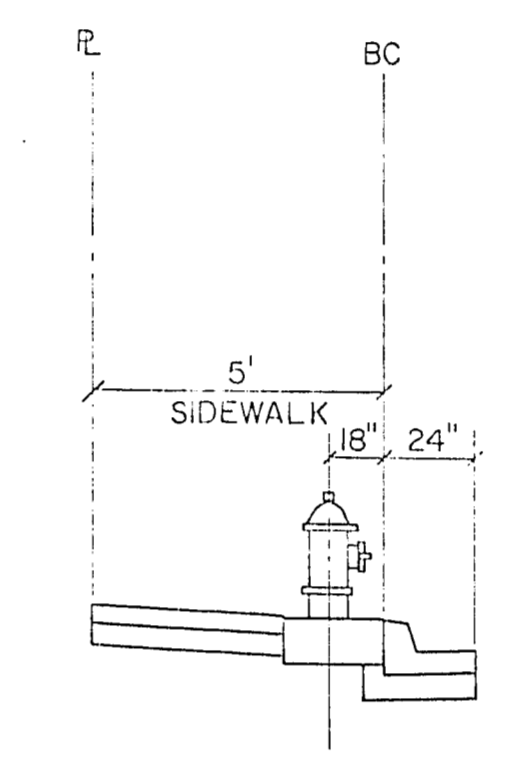
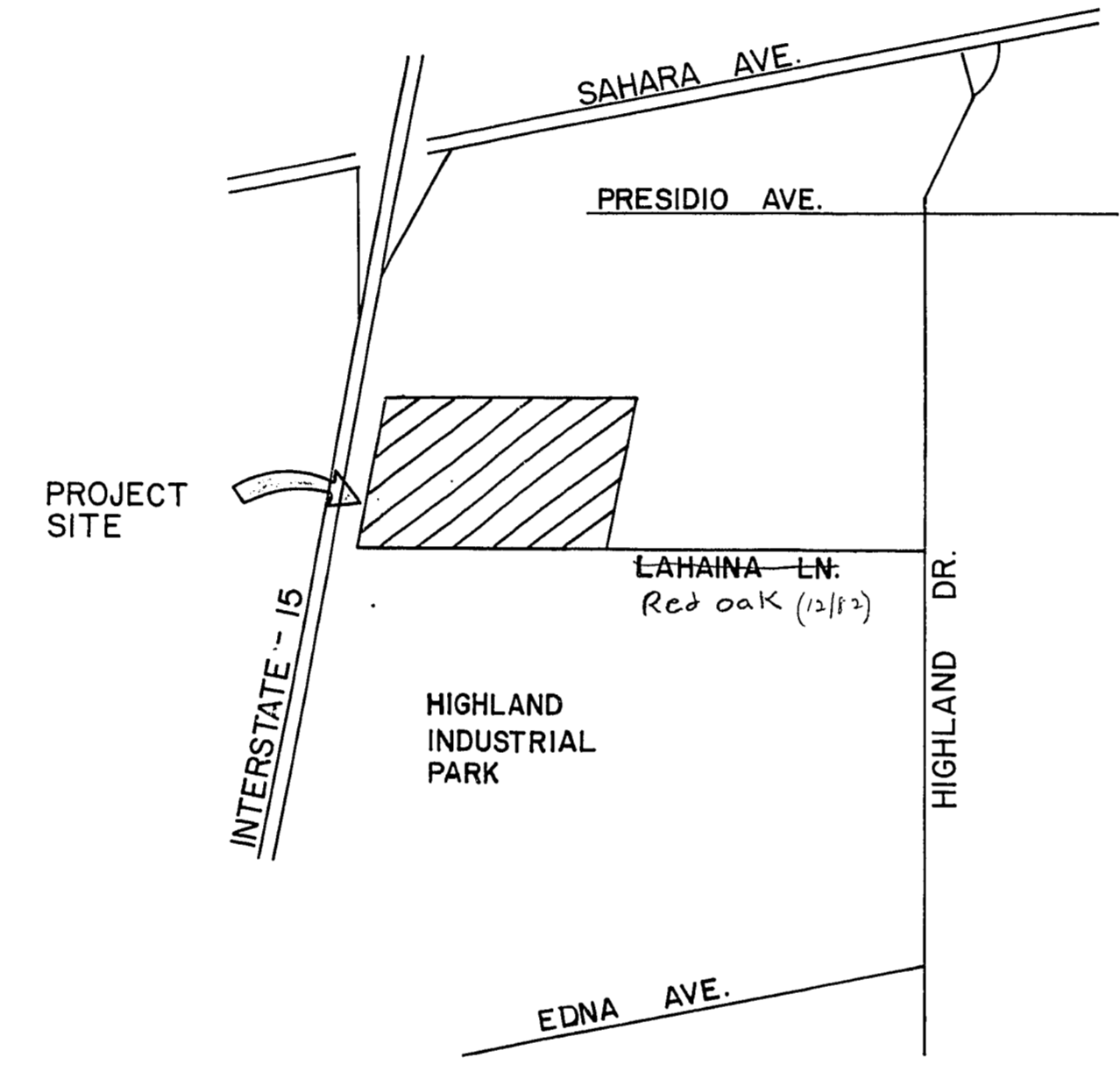
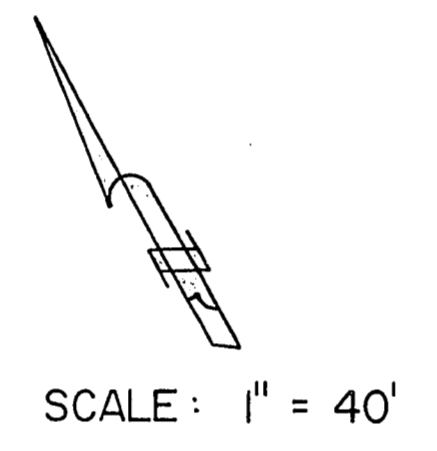
*Eugene Rogus* 4/6/79  
 CITY OF LAS VEGAS  
 ELECTRICAL COORDINATOR  
 DATE

*Doniglen* 4-9-79  
 CITY OF LAS VEGAS  
 ELECTRICAL SUPERVISOR  
 DATE

*Stephen Hampton* 3-27-79  
 CITY OF LAS VEGAS  
 FIRE MARSHALL  
 DATE

*E.D. Will* 4-9-79  
 CITY OF LAS VEGAS  
 QUALITY CONTROL  
 DATE

*Tom* 4/9/79  
 CITY OF LAS VEGAS  
 FIELD OPERATIONS ENGINEER  
 DATE



REVISIONS		
NO.	DESCRIPTION/DATE	BY
1	ADD 1/2" STREET IMPROVE. 3-18-79	TET

*Thomas* 1/22/79

SPARKS, NEVADA  
 LAS VEGAS, NEVADA  
 SEATTLE, WASHINGTON  
 incorporated  
**SEA**  
 ENGINEERS/PLANNERS

**UNITED OUTDOOR ADVERTISING**  
**UTILITY PLAN**

JOB NO. 2-0169-002-814
DESIGNED E.D.
DRAWN P.J.
COMP.
CHECKED
DATE
SHEET NO.