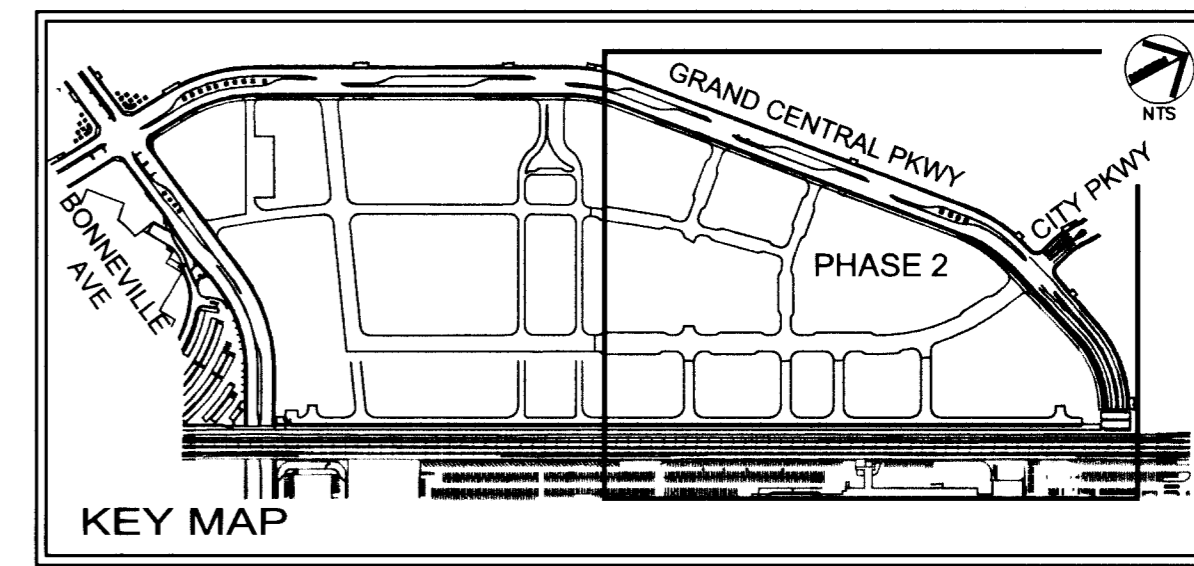
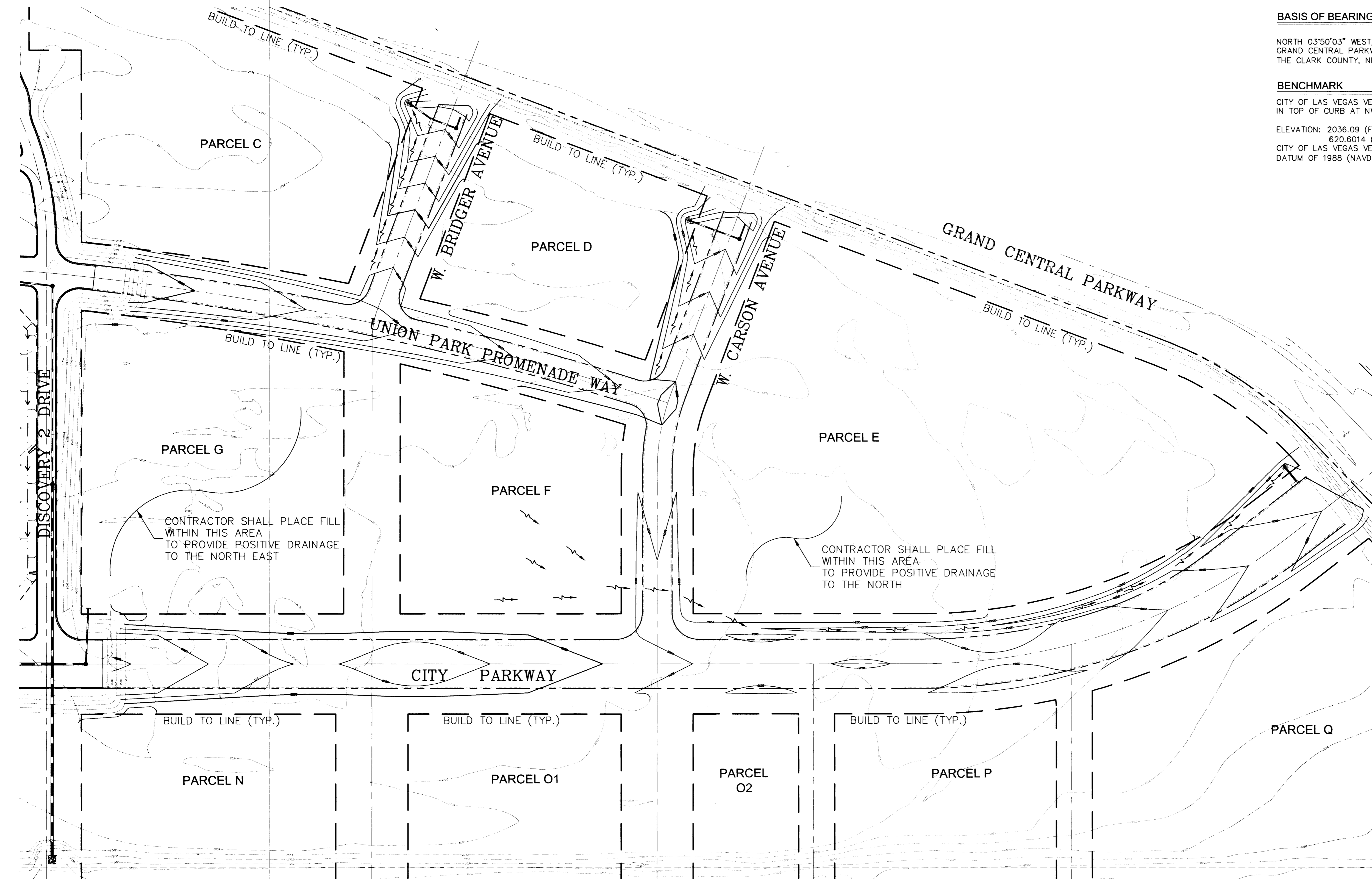


Date: December 19, 2007
 User: pm@urce
 Path: C:\GIS\Projects\107336\107336.dwg
 This document, together with the contract and design, represents the entire agreement between the City of Las Vegas and Kimley-Horn and Associates, Inc. No other conditions, specifications, or drawings shall be relied upon unless specifically referred to in this document.



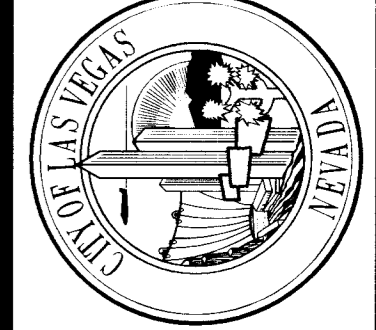
BASIS OF BEARING
 NORTH 03°50'03" WEST, BEING THE BEARING OF A PORTION OF THE CENTERLINE OF GRAND CENTRAL PARKWAY, AS SHOWN ON BOOK 43, PAGE 61 OF PLATS ON FILE AT THE CLARK COUNTY, NEVADA RECORDER'S OFFICE

BENCHMARK
 CITY OF LAS VEGAS VERTICAL CONTROL POINT "0LV01 33E6", BEING A RIVET AND PLATE IN TOP OF CURB AT NW CORNER OF BONNEVILLE AVENUE & GRAND CENTRAL PARKWAY.
 ELEVATION: 2036.09 (FEET)
 620.6014 (METERS)
 CITY OF LAS VEGAS VERTICAL CONTROL v.2002 BASED ON NORTH AMERICAN VERTICAL DATUM OF 1988 (NAVD 88).

REV	DATE	BY	REVISION

DRAWN BY: KHA
 DESIGNED BY: FAB
 CHECKED BY: DDW
 SCALE (H): 1"=60'
 SCALE (V): -
 DATE: December 2007

Kimley-Horn and Associates, Inc.
 Engineering, Planning, and Environmental Consultants
 2080 East Flamingo Road Suite 210
 Las Vegas, Nevada 89119
 TEL No. (702) 734-5666
 FAX No. (702) 735-4849



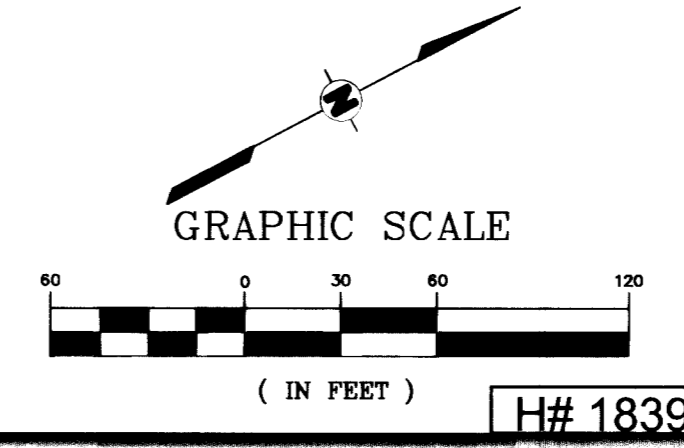
DEPARTMENT OF PUBLIC WORKS
 PROJECT: **UNION PARK PHASE 1**

SHEET: **OVERALL CONTOUR PLAN ADD/ALT FOR PHASE 2**

STATE OF NEVADA
 CIVIL ENGINEER
 DAVID D. WILSON
 Exp. 6/30/08
 CIVIL
 No. 8441

SHEET NO. **O-CP-3**
 SHEET 23 OF 168
 DRAWING NO. 107V4816

ADD/ALT FOR PHASE 2



Avoid cutting underground utility lines. It's costly.
Call before you Dig
 811

SAFETY ALERT
Call Before You Overhead
 1-702-455-7511
 1-702-227-2929

Call before you UnderGround
 1-702-455-7511
 CLARK COUNTY TRAFFIC OPERATIONS AND
 1-702-229-6611
 LAS VEGAS AREA COMPUTERIZED TRAFFIC SYSTEM

NOTE:
 ATTENTION IS DRAWN TO THE FACT THAT THE SCALE OF THESE DRAWINGS MAY HAVE BEEN DISTORTED DURING REPRODUCTION PROCESSES

H# 18393

107336

092587003 - UNION PARK PHASE