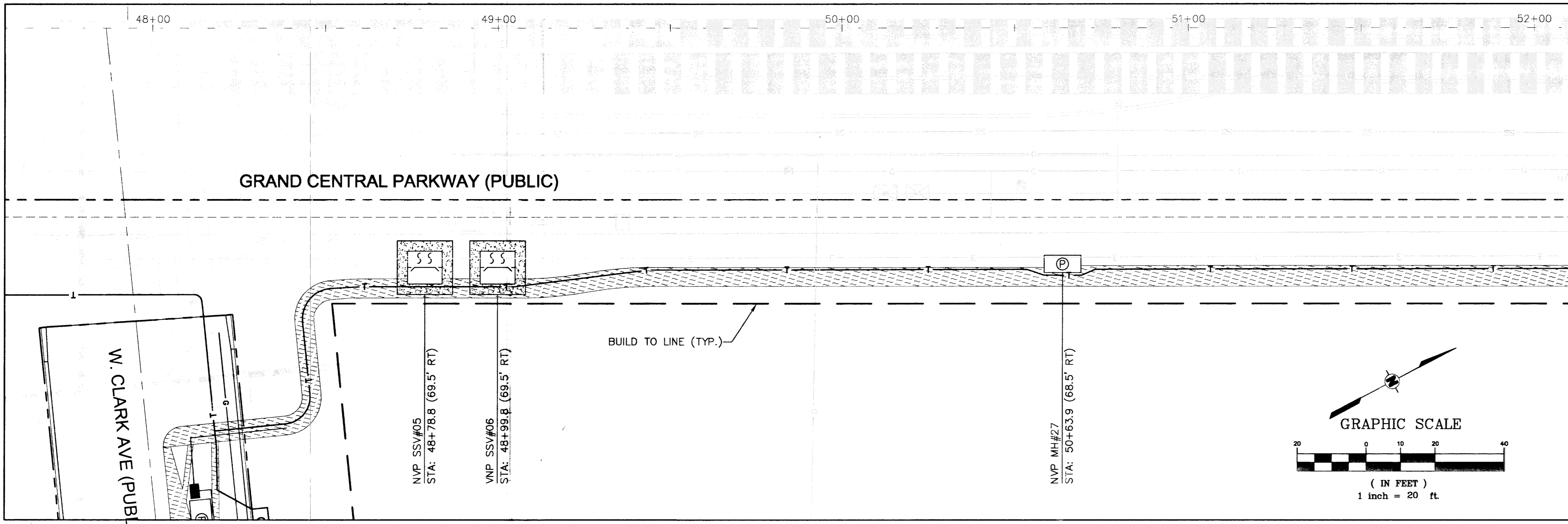
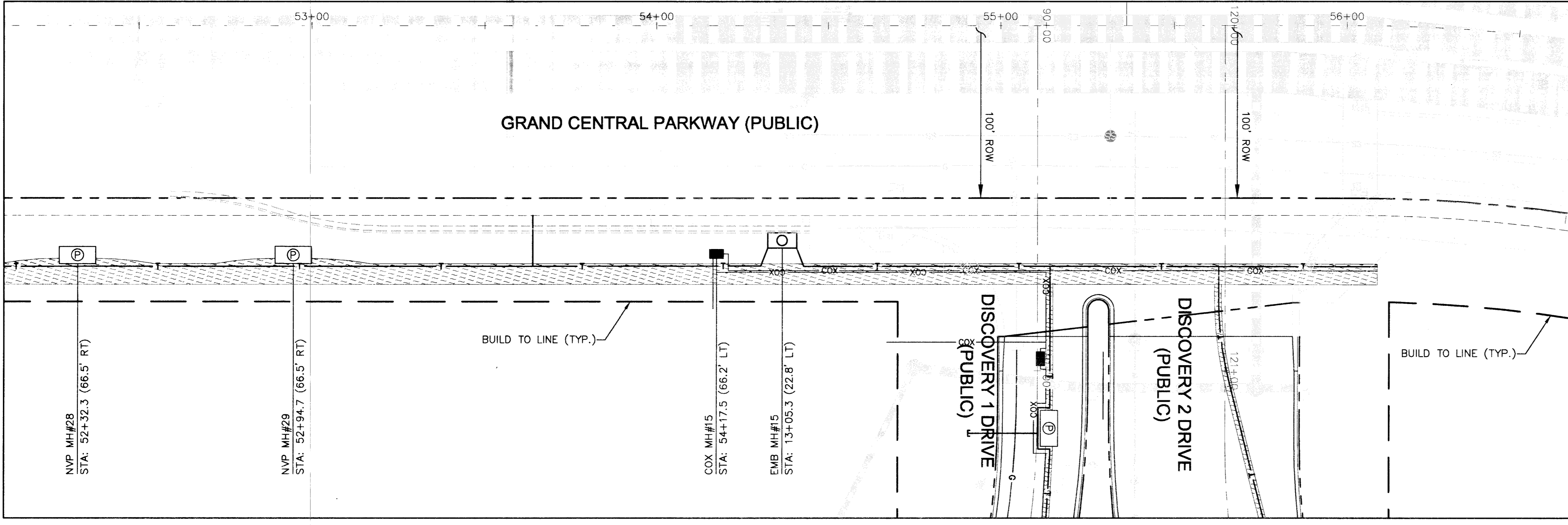


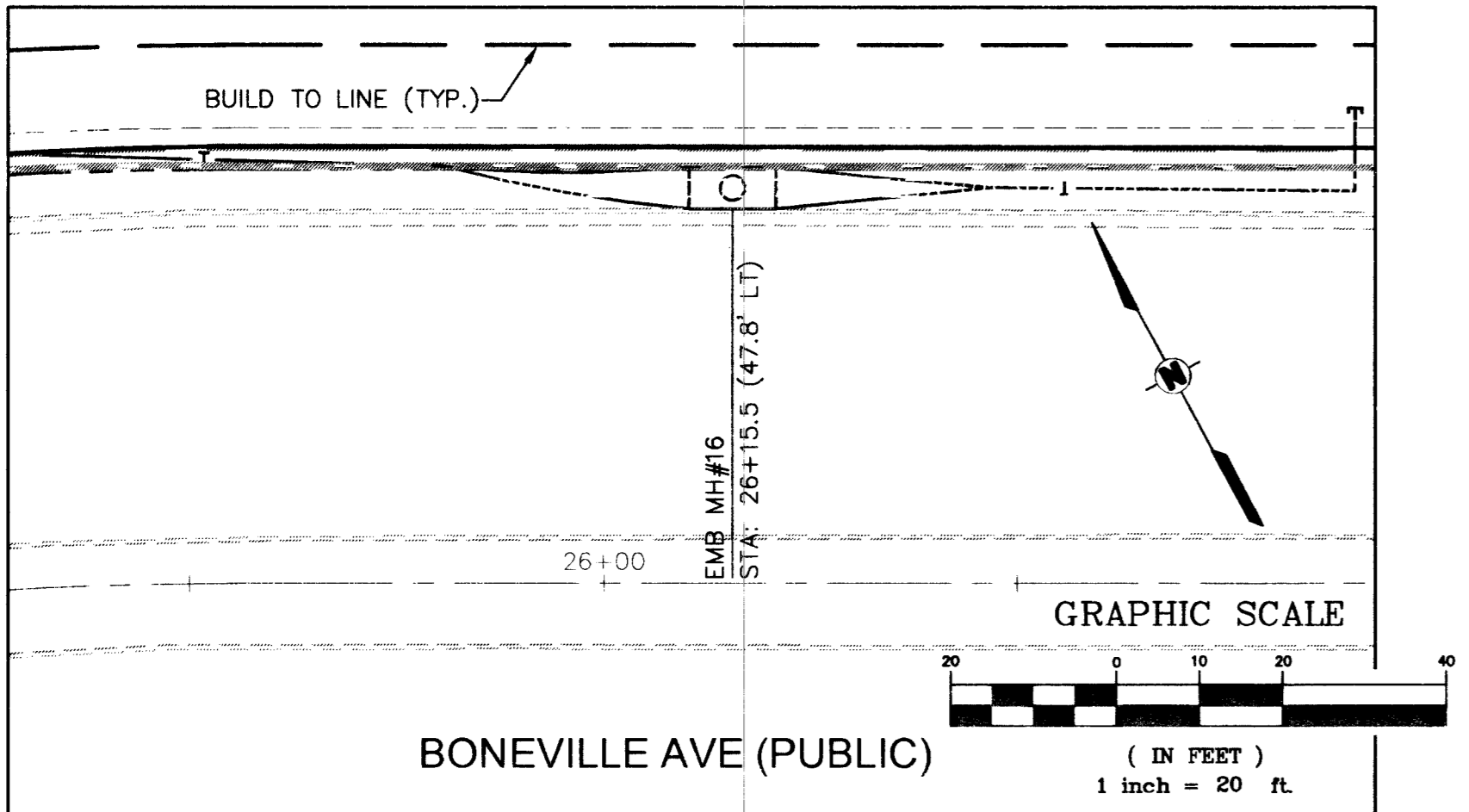
Date: November 28, 2007 9:14am / User: Jim Nease  
 Path: K:\CV\092887 - Nevada\003 - Phase 1\CADD\987003\UT-Dry-CC-BONNEVILLE.DWG  
 This document, together with the concepts and designs contained herein, is intended only for the specific purpose and client for which it was prepared. Reuse of and improper reliance on this document without written authorization and adaptation by Kimley-Horn and Associates, Inc. shall be without liability to Kimley-Horn and Associates, Inc.



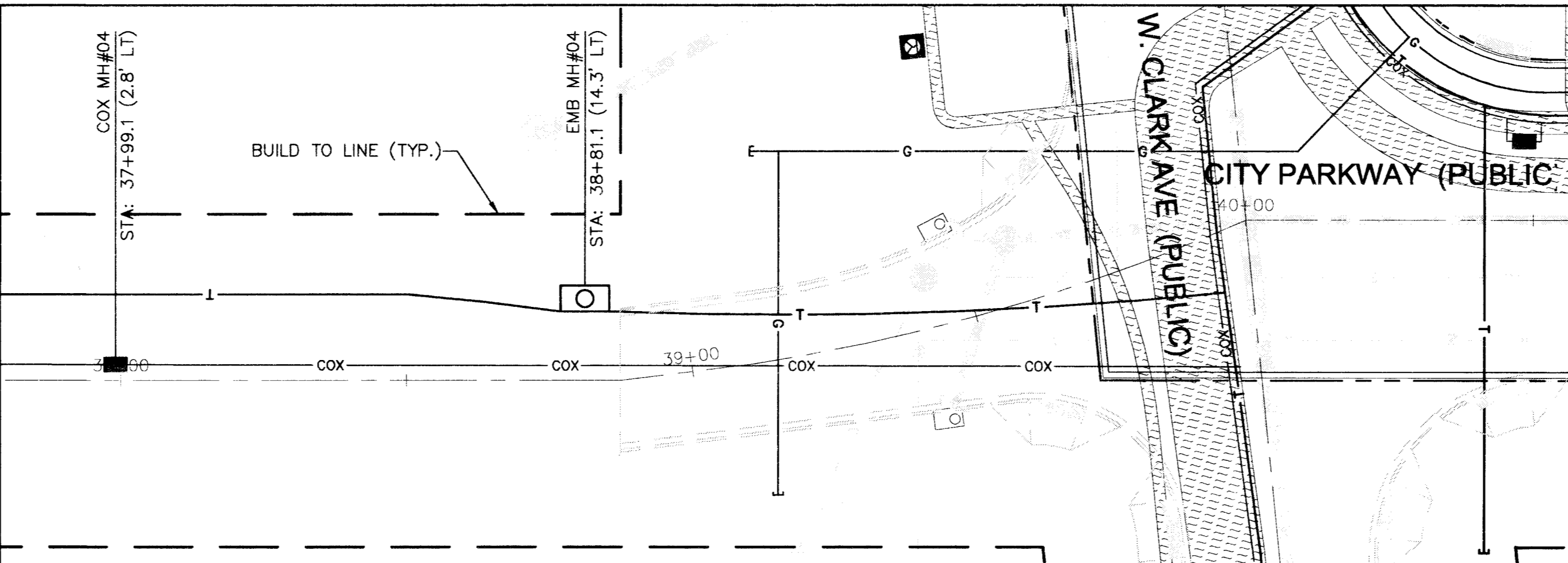
PLAN VIEW - GRAND CENTRAL PARKWAY



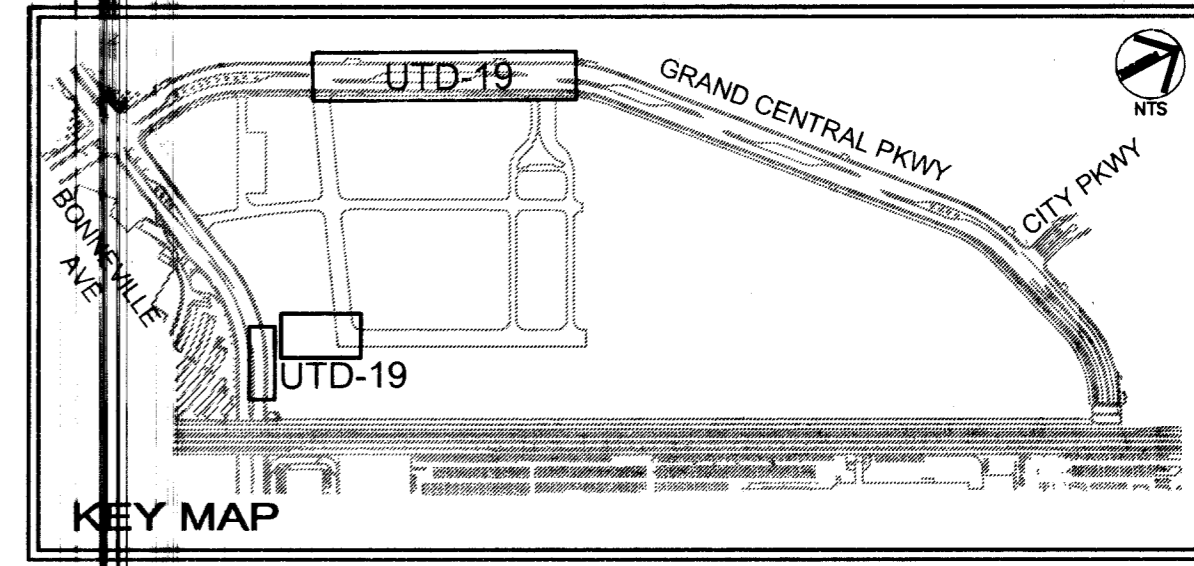
PLAN VIEW - GRAND CENTRAL PARKWAY



PLAN VIEW - BONEVILLE AVENUE



PLAN VIEW - CITY PARKWAY



**BASIS OF BEARING**

NORTH 03°50'03" WEST, BEING THE BEARING OF A PORTION OF THE CENTERLINE OF GRAND CENTRAL PARKWAY, AS SHOWN ON BOOK 43, PAGE 61 OF PLATS ON FILE AT THE CLARK COUNTY, NEVADA RECORDER'S OFFICE

**BENCHMARK**

CITY OF LAS VEGAS VERTICAL CONTROL POINT "0LV01 33E6", BEING A RIVET AND PLATE IN TOP OF CURB AT NW CORNER OF BONNEVILLE AVENUE & GRAND CENTRAL PARKWAY.

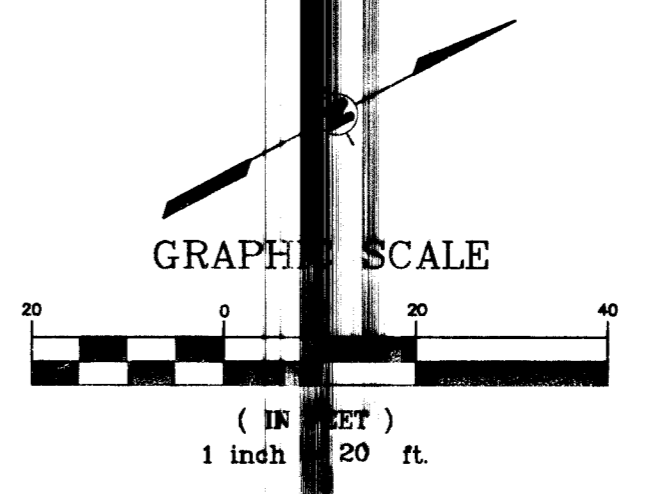
ELEVATION: 2033.09 (FEET)  
 620.6014 (METERS)  
 CITY OF LAS VEGAS VERTICAL CONTROL v.2002 BASED ON NORTH AMERICAN VERTICAL DATUM OF 1988 (NAVD 88).

**GENERAL NOTES**

1. THE CONTRACTOR SHALL PROTECT ALL EXISTING UNDERGROUND UTILITIES IN PLACE DURING EXCAVATION AND BACKFILL.
2. THE DRY UTILITY ALIGNMENTS, (GAS, ELECTRIC, TELEPHONE, CABLE) ARE SHOWN FOR REFERENCE AND ONLY THE MANHOLE LOCATIONS ARE INDICATED. SEE THE RESPECTIVE UTILITY DESIGN FOR FURTHER DETAILS. ANY RELOCATION OF THE MANHOLES FROM THE POSITIONS INDICATED MUST BE COORDINATED WITH THE ENGINEER.
3. CONTRACTOR SHALL MAINTAIN 3' HORIZONTAL DISTANCE BETWEEN WATER MAIN AND ANY DRY UTILITY.
4. ALL DRY UTILITY STRUCTURES ARE SHOWN WITH STATIONS AND OFFSETS TO THE CENTER OF THE STRUCTURE.

**LEGEND**

- PROP. NEVADA POWER CONDUIT
- PROP. COX COMMUNICATIONS
- PROP. EMBARQ TELEPHONE
- PROP. TELEPHONE/CABLE
- PROP. GAS LINE
- SPRINT 650 MH PER EMBARQ STDs
- SPRINT 510 MH PER EMBARQ STDs
- MH PER NPC STDs
- B200 MH PER COX STDs
- PULLBOX PER NPC STDs
- TRANSFORMER PAD PER NPC STDs
- SUBMERSIBLE SWITCH VAULT PER NPC STDs



Avoid cutting underground utility lines. It's costly.  
**Call before you Dig**  
 811

**SAFETY ALERT**  
 Call Before You Overhead  
 1-702-227-2929

Call before you UnderGround  
 1-702-455-7511  
 CLARK COUNTY TRAFFIC OPERATIONS AND LAS VEGAS AREA COMPUTERIZED TRAFFIC SYSTEM

DEPARTMENT OF PUBLIC WORKS  
 PROJECT: DRY UTILITIES GRAND CENTRAL PARKWAY & BONNEVILLE AVENUE  
 PHASE 1

STATE OF NEVADA  
 CIVIL ENGINEER  
 DAVID D. WILSON  
 Exp. 6/30/08  
 No. 8441 WOV  
 UTD-19  
 SHEET 137 OF 166  
 DRAWING NO. 107V4816

DRAWN BY: KHA SCALE (H): 1"=20'  
 DESIGNED BY: PAB SCALE (V): 1"=2'  
 CHECKED BY: DDW DATE: November 2007  
 Kimley-Horn and Associates, Inc.  
 Engineering, Planning, and Environmental Consultants  
 2080 East Flamingo Road, Suite 210  
 Las Vegas, Nevada 89119  
 TELE No. (702) 734-5666  
 FAX No. (702) 735-4949

107450

H# 18893

BIDD 081730T

REV DATE BY  
 08/25/07 003 - UNION PARK PHASE