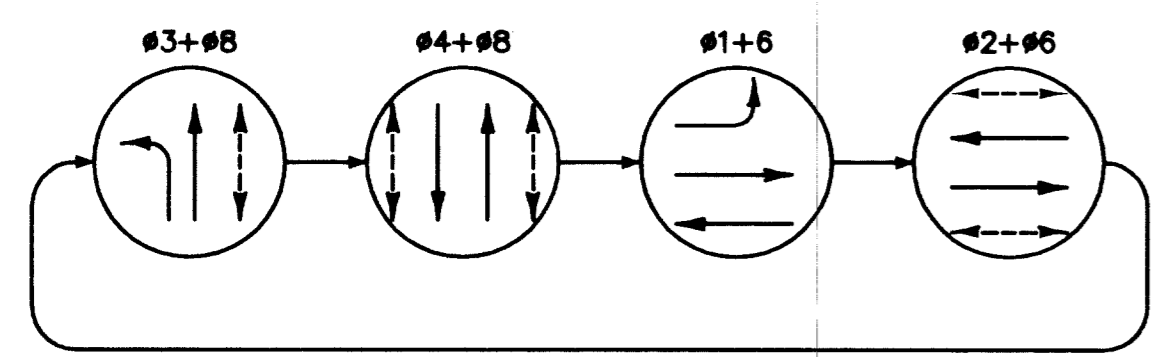


POLE SCHEDULE

POLE	POLE				VEHICLE SIGNALS				PEDESTRIAN SIGNALS		REMARKS			
	LOCATION STATION & OFFSET (GRAND CENTRAL)	TYPE	FOUND.	MAST ARM		LUMINAIRE		TYPE	QUAD	TYPE		QUAD		
				QUAD	LENGTH	QUAD	LENGTH							
A	EXISTING	XX-A	EXIST.	3	60'	3	15'	(3) M-2 B-2T (N)	MA 1 (N)	W-0T	1	EXIST.	EXIST.	REMOVE EXISTING B-1T & REPLACE WITH PROPOSED B-2T (PHASES AS SHOWN) 2
B	EXISTING	XX	EXIST.	4	40'	4	15'	(3) M-2 B-1T (N)	MA 2 (N)	-	-	-	-	1 2 3
C	EXISTING	1-A	EXIST.	-	-	-	-	A-2T	TOP	W-3T	2	EXIST.	EXIST.	
D	EXISTING	XX-A	EXIST.	1	45'	1	15'	(4) M-2 B-6T	MA 3	W-3T	3	EXIST.	EXIST.	
E	EXISTING	XX-A	EXIST.	2	60'	2	15'	(3) M-2	MA	W-3T	4	EXIST.	EXIST.	3 4
F	EXISTING	1-A	EXIST.	-	-	-	-	-	TOP	W-0T	1	EXIST.	EXIST.	
G	EXISTING	1-B	EXIST.	-	-	-	-	-	TOP	W-2T	TOP	EXIST.	EXIST.	

(N) - NEW EQUIPMENT TO BE FURNISHED AND INSTALLED PER PLAN.
ALL EQUIPMENT IS EXISTING UNLESS OTHERWISE NOTED AS NEW EQUIPMENT.

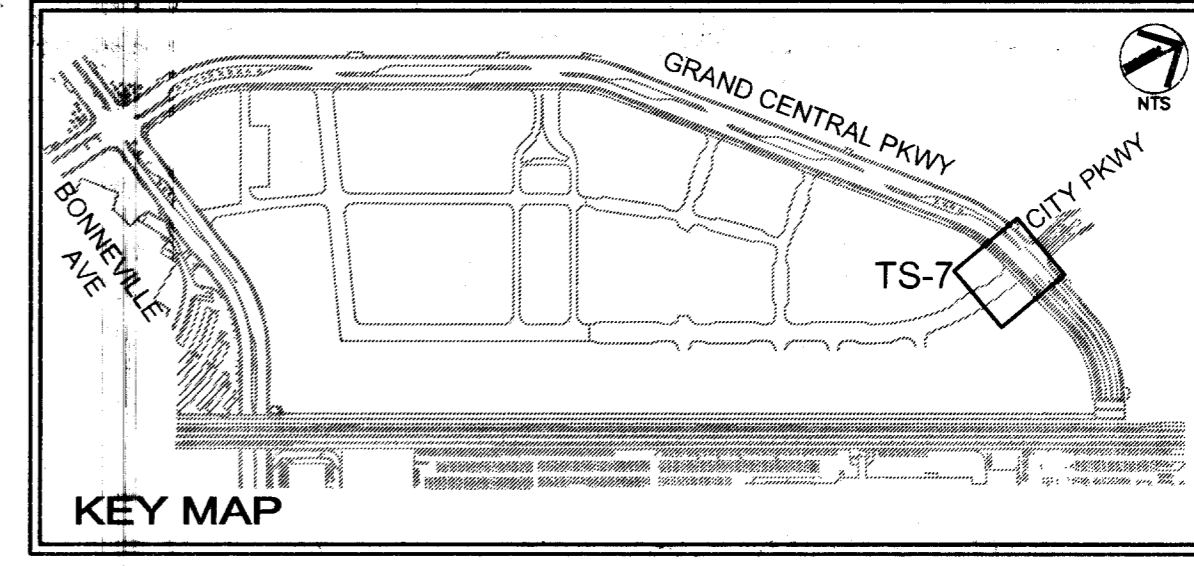
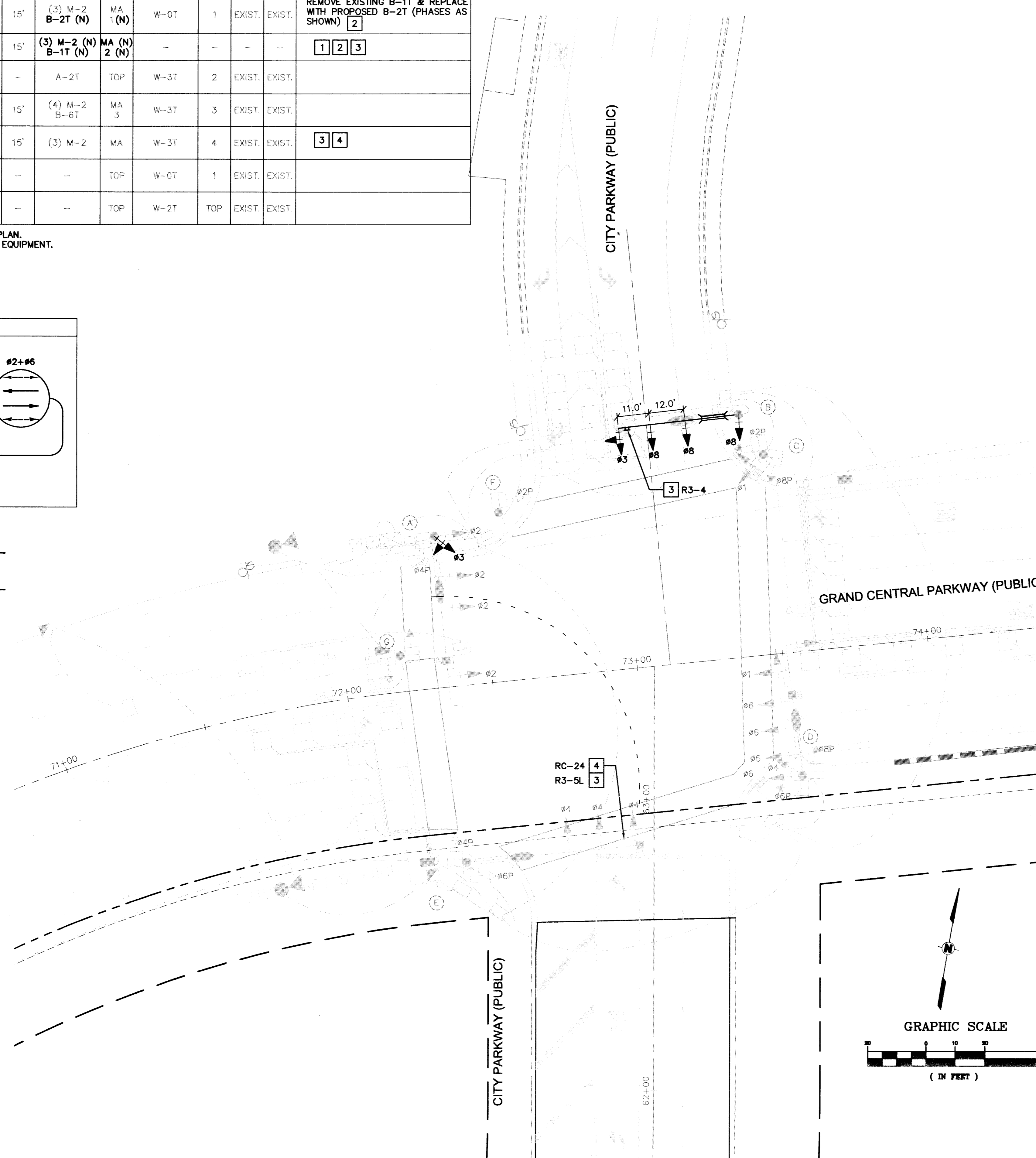
PROPOSED PHASE DIAGRAM



FLASH OPERATIONS - ALL RED
OPTICOM PREEMPTION - #2, #4, #6, #8

SEE CITY OF LAS VEGAS DOWNTOWN CONNECTOR, BUS RAPID TRANSIT, PROJECT GRAND CENTRAL PARKWAY WIDENING (BID No. 07.1730.15) FOR EXISTING TRAFFIC SIGNAL DETAILS

SIGN SCHEDULE		
R3-4 24"x24"	RC-24 30"x36"	R3-5L 30"x36"



BASIS OF BEARING
NORTH 03°50'03" WEST, BEING THE BEARING OF A PORTION OF THE CENTERLINE OF GRAND CENTRAL PARKWAY, AS SHOWN ON BOOK 43, PAGE 61 OF PLATS ON FILE AT THE CLARK COUNTY, NEVADA RECORDER'S OFFICE

BENCHMARK
CITY OF LAS VEGAS VERTICAL CONTROL POINT "OLV01 33E6", BEING A RIVET AND PLATE IN TOP OF CURB AT NW CORNER OF BONNEVILLE AVENUE & GRAND CENTRAL PARKWAY.

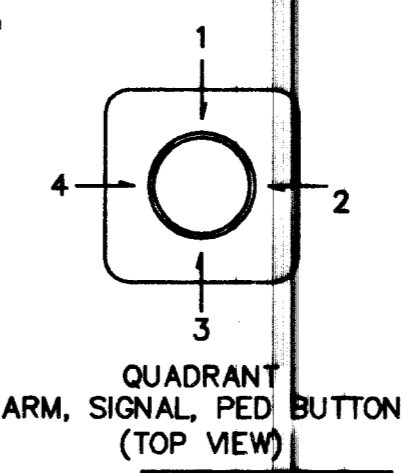
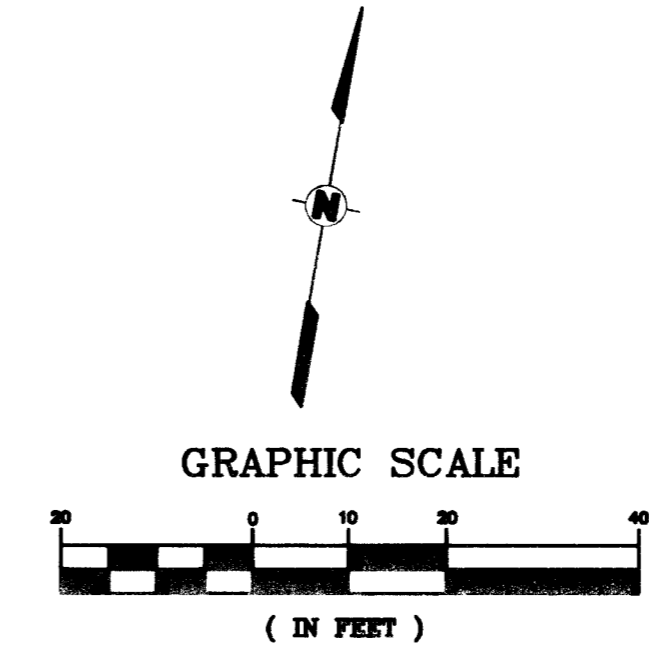
ELEVATION: 2036.09 (FEET)
#20.6014 (METERS)
CITY OF LAS VEGAS VERTICAL CONTROL v.2002 BASED ON NORTH AMERICAN VERTICAL DATUM OF 1988 (NAVD 88).

- CONSTRUCTION NOTES**
- FURNISH AND INSTALL INTERNALLY-ILLUMINATED STREET NAME SIGN. MOUNT STREET NAME SIGN ONTO MAST ARM PER CCAUSD STD DWG No. 404.416, 404.117 AND CLV MODIFIED STANDARD DETAIL (SEE SHEET TS-8). SEE STREET NAME SIGN SCHEDULE THIS SHEET.
 - ALL VEHICLE SIGNAL INDICATIONS SHALL BE SUPPLIED WITH LIGHT EMITTING DIODE (LED) SIGNAL MODULES INSTALLED.
 - FURNISH AND INSTALL SIGN ON MAST ARM. SEE SIGN SCHEDULE (THIS SHEET) FOR DESIGNATION AND SIZE.
 - REMOVE AND SALVAGE EXISTING MAST ARM SIGN.

- GENERAL NOTES**
- CONTRACTOR SHALL VERIFY ALL UNDERGROUND UTILITIES PRIOR TO CONSTRUCTING SIGNAL POLE FOUNDATION.
 - CONTRACTOR SHALL INSTALL RED MARKING TAPE ABOVE ALL PROPOSED CONDUITS, 18" BELOW GRADE.
 - CONTRACTOR SHALL VERIFY ALL UTILITY CONFLICTS AND OBSTACLES PRIOR TO TRENCHING.
 - CONTRACTOR TO COORDINATE LOCATIONS OF PROPOSED PULL BOXES TO BE ADJACENT TO CURB JOINTS AND SCORING PATTERN LINES.
 - ALL TRAFFIC SIGNAL EQUIPMENT SHALL BE RAL 6012 IN COLOR PER PROJECT SPECIAL PROVISIONS.
 - ALL POLE LOCATIONS AND FOUNDATION ELEVATIONS SHALL BE APPROVED BY ENGINEER BEFORE CONSTRUCTION IS STARTED OR POLES ARE ORDERED. ALL ELEVATIONS ARE TO TOP OF FOUNDATION UNLESS NOTED OTHERWISE. SEE STATION AND OFFSET REFERENCE DETAILS ON SHEET TS-8.
 - SITE CONDITIONS MAY REQUIRE RELOCATION OR ADJUSTMENT OF PULL BOX LOCATIONS. ALL RELOCATION SHALL BE APPROVED BY ENGINEER AND INCIDENTAL TO THE CONTRACT. SEE STATION, OFFSET AND ELEVATION REFERENCE DETAILS ON SHEET TS-8.
 - CONTRACTOR SHALL REVIEW LANDSCAPE PLAN TO AVOID LOCATING CONDUIT RUNS AND PULL BOX IN CONFLICT WITH FUTURE LANDSCAPE IMPROVEMENTS.

- LEGEND**
- ⊞ SIGN
 - PREFORMED 6' x 6' LOOP
 - ⊙ TRAFFIC SIGNAL POLE & FOUNDATION

SEE SHEET TS-8 FOR TRAFFIC SIGNAL NOTES & FOR RELATED TRAFFIC SIGNAL DETAILS.



QUADRANT
ARM, SIGNAL, PED BUTTON
(TOP VIEW)

SAFETY ALERT
Call before you Dig
811

Call Before You UnderGround
1-702-455-7511
CLARK COUNTY TRAFFIC OPERATIONS AND
1-702-229-6611
LAS VEGAS AREA COMPUTERIZED TRAFFIC SYSTEM

092587003 - UNION PARK PHASE 1

REVISION

BY DATE

REV DATE

CHECKED BY: DDW DATE: November 2007

DESIGNED BY: PAB SCALE: N/A

DRAWN BY: KHA SCALE: 1"=20'

Kimley-Horn and Associates, Inc.
Engineering, Planning, and Environmental Consultants
2080 East Flamingo Road, Suite 210
Las Vegas, Nevada 89119
TEL No. (702) 734-5666
FAX No. (702) 735-4949

DEPARTMENT OF PUBLIC WORKS

**TRAFFIC SIGNAL PLAN
CITY PARKWAY & GRAND
CENTRAL PARKWAY**

**UNION PARK
PHASE 1**

PROJECT:

SHEET: 11-30-07

DATE: 11/30/07

DESIGNED BY: ANDY CARROLL

CHECKED BY: [Signature]

DATE: 11/30/07

PROJECT NO: 16131

DATE: 11/30/07

PROJECT: TS-7

SHEET 157 OF 166

DRAWING NO. 107V4816

BID# 08173011

Date: November 28, 2007 8:51am / User: rcs/rdw
 Path: K:\CV\092587 - Newberry\03 - Phase 1\03\587003-1a-7.dwg
 The document, together with the concepts and designs presented herein, is intended only for the specific purpose and client for which it was prepared. Review of and approval of this document without written authorization and approval by Kimley-Horn and Associates, Inc. shall be without liability to Kimley-Horn and Associates, Inc.

107470

H# 18393