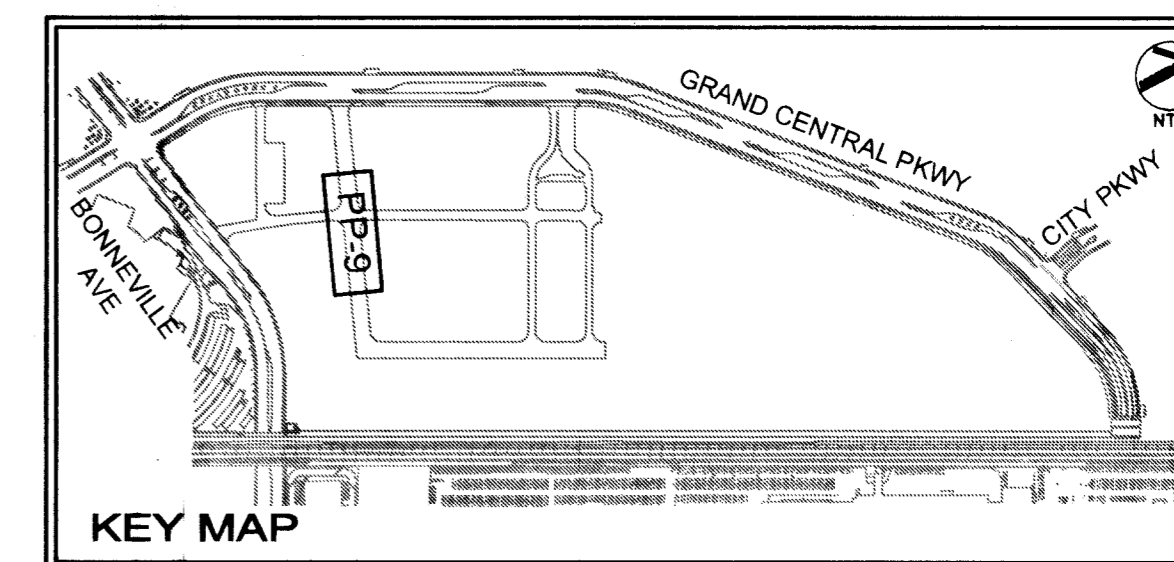
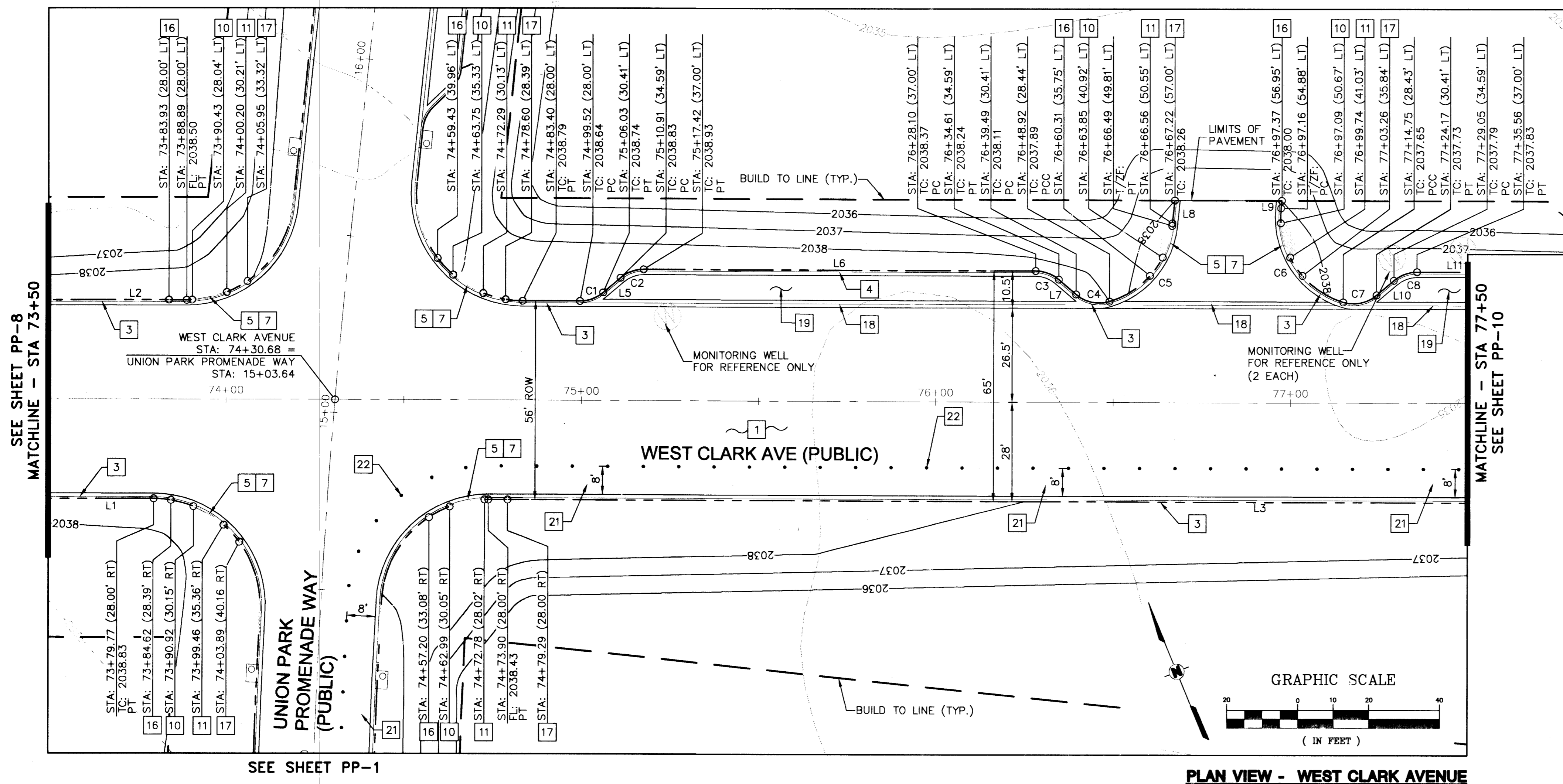


SEE SHEET PP-2



BASIS OF BEARING

NORTH 03°50'03" WEST, BEING THE BEARING OF A PORTION OF THE CENTERLINE OF GRAND CENTRAL PARKWAY, AS SHOWN ON BOOK 43, PAGE 61 OF PLATS ON FILE AT THE CLARK COUNTY, NEVADA RECORDER'S OFFICE

BENCHMARK

CITY OF LAS VEGAS VERTICAL CONTROL POINT "0LV01 33E6", BEING A RIVET AND PLATE IN TOP OF CURB AT NW CORNER OF BONNEVILLE AVENUE & GRAND CENTRAL PARKWAY.
ELEVATION: 2036.09 (FEET)
620.6014 (METERS)
CITY OF LAS VEGAS VERTICAL CONTROL v.2002 BASED ON NORTH AMERICAN VERTICAL DATUM OF 1988 (NAVD 88).

ROADWAY CONSTRUCTION NOTES

- 1 INSTALL PAVEMENT SECTION TO LIMITS SHOWN ON PLANS. SEE TYPICAL SECTIONS SHEETS TYP-1 AND TYP-2 FOR STRUCTURAL DIMENSIONS AND DETAILS.
- 3 INSTALL MODIFIED TYPE "L" CURB W/ CATCH GUTTER PER SECTION DETAIL ON SHEET DT-1.
- 4 INSTALL MODIFIED TYPE "L" CURB W/ SPILL GUTTER PER SECTION DETAIL ON SHEET DT-1.
- 5 INSTALL ZERO FACED CURB SECTION. SEE DETAIL ON SHEET DT-1 FOR APPLICABLE DIMENSIONS AND DETAILS.
- 7 SIDEWALK RAMP SHOWN AS REFERENCE ONLY. RAMP TO BE CONSTRUCTED BY PARCEL DEVELOPER.
- 10 BEGIN ZERO FACE CURB.
- 11 END ZERO FACE CURB.
- 16 BEGIN CURB TRANSITION.
- 17 END CURB TRANSITION.
- 18 INSTALL MODIFIED V-GUTTER PER DETAIL ON SHEET DT-2.
- 19 INSTALL CONCRETE SECTION. SEE TYPICAL SECTIONS FOR DETAILS.
- 21 RUVO TEMPORARY PEDESTRIAN PATH. SEE DETAIL ON SHEET DT-1.
- 22 FLEXIBLE DELINEATORS INSTALLED AT 8' O/C SEE SHEET DT-1 FOR DETAIL.

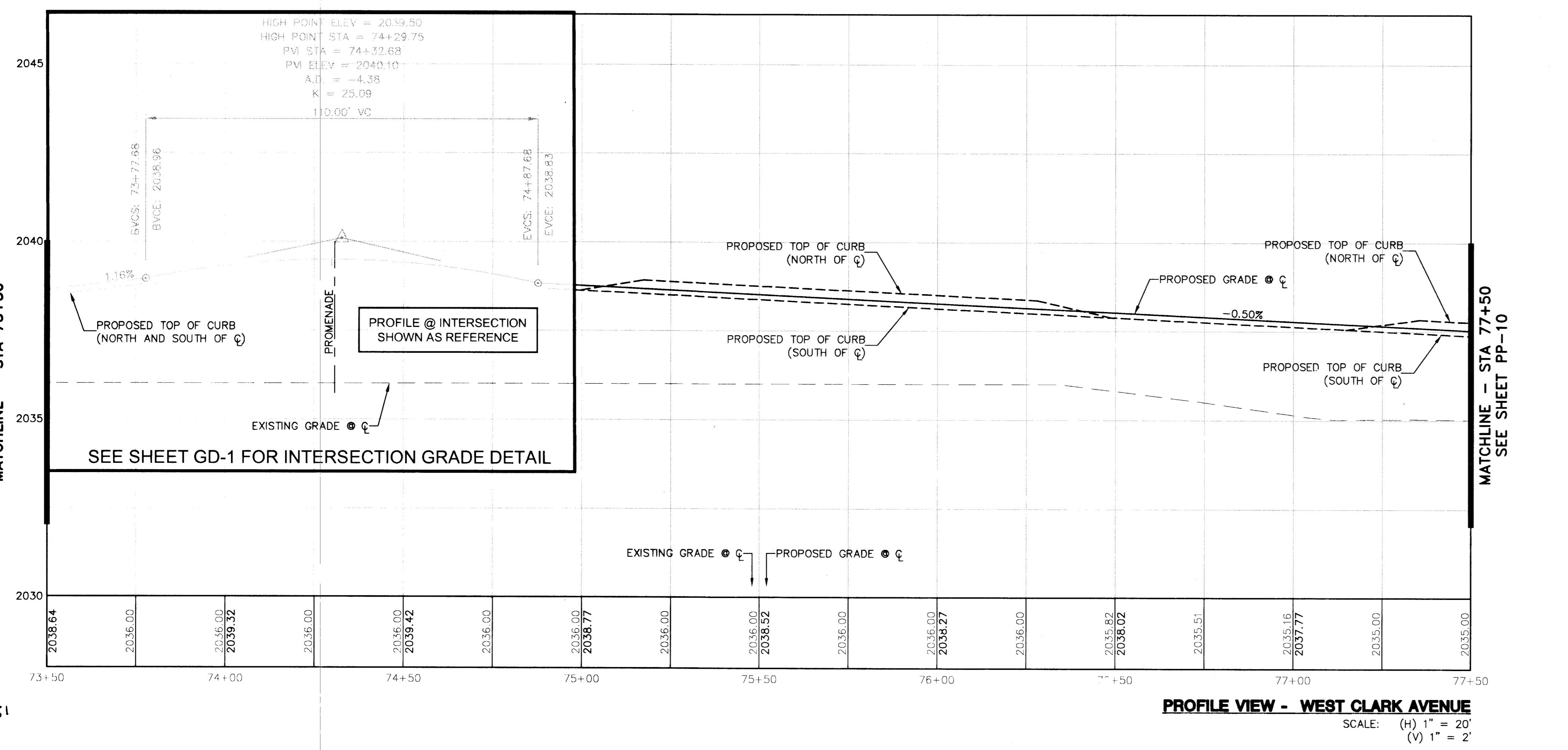
GENERAL NOTES

1. CURVE DATA FOR THE CURB AND GUTTER IS AT THE BACK OF CURB.

RELATED TABLES:

LINE	LENGTH	BEARING
L1	295.15	N67°53'54"W
L2	302.50	N67°53'54"W
L3	435.16	N67°53'54"W
L4	16.12	N67°53'54"W
L5	6.43	N71°30'01"E
L6	110.68	N67°53'54"W
L7	6.43	N27°17'26"W
L8	7.23	N27°55'12"E
L9	2.13	N27°55'12"E
L10	6.43	N71°30'01"E
L11	61.67	N67°53'54"W

CURVE	LENGTH	RADIUS	DELTA	TANGENT
C1	7.09'	10.00	40°36'04.7"	3.70'
C2	7.09'	10.00	40°36'04.7"	3.70'
C3	7.09'	10.00	40°36'28.5"	3.70'
C4	10.05'	10.00	57°34'58.0"	5.50'
C5	29.32'	25.00	67°12'24.1"	16.61'
C6	34.42'	25.00	78°52'30.2"	20.56'
C7	10.04'	10.00	57°32'40.8"	5.49'
C8	7.09'	10.00	40°36'04.7"	3.70'



SAFETY ALERT

Call before you Dig
Call Before You Overhead

811

1-702-455-7511
1-702-229-2929

UnderGround
1-702-455-7511
1-702-229-6611

LAZ VEGAS AREA COMPREHENSIVE TRAFFIC SYSTEM

09/25/03 - UNION PARK PHASE

REV DATE BY

DESIGNED BY: PAB
CHECKED BY: DDW
DATE: December 2007

SCALE (H): 1" = 20'
SCALE (V): 1" = 2'

Kimley-Horn and Associates, Inc.
Engineering, Planning, and Environmental Consultants
2080 East Flamingo Road, Suite 210
Las Vegas, Nevada 89119
TEL: (702) 734-5666
FAX: (702) 735-4949

CITY OF LAS VEGAS

DEPARTMENT OF PUBLIC WORKS

UNION PARK PHASE 1

PLAN & PROFILE WEST CLARK AVENUE STA: 73+50 - 77+50

SHEET: PP-9

DATE: 6/30/08

BY: DAVID D. WILSON

Exp. 6/30/08

CIVIL

107V4816

BID# 0817301