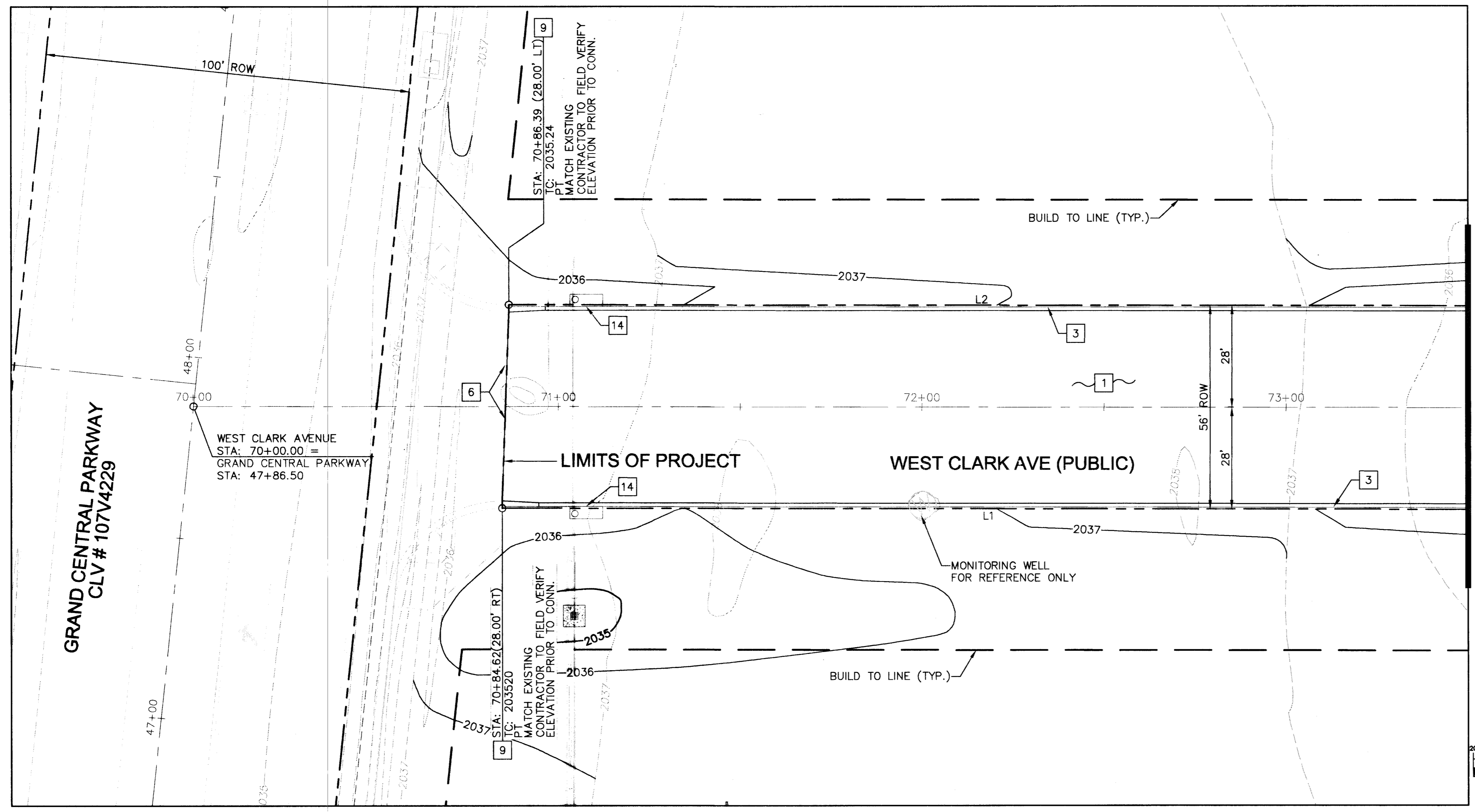
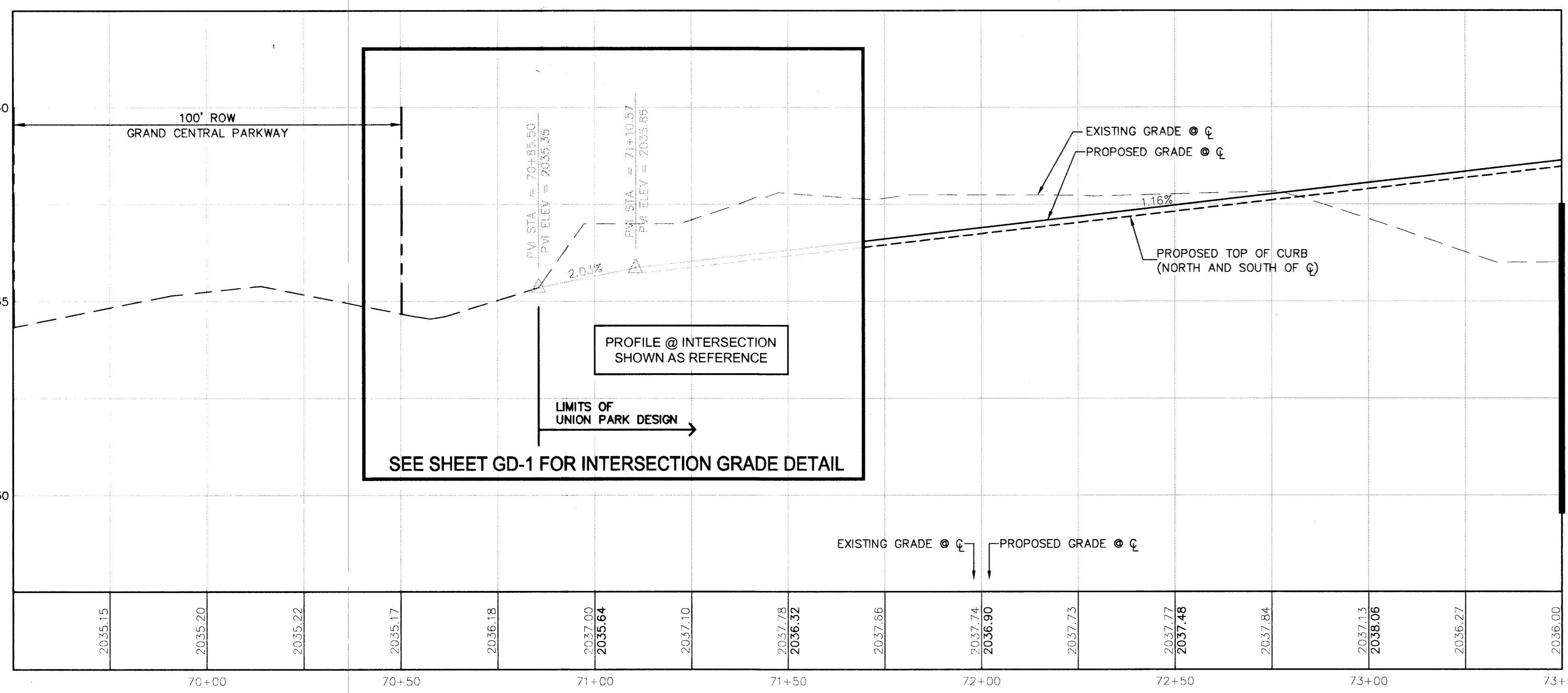


Date: 11/15/07 9:22am / user: fernando.vega
 Path: C:\Users\fernando.vega\Documents\107V4229.dwg
 Plot: 107350.ctb
 Plot Date: 11/15/07 9:22am
 Plot Time: 9:22am
 Plot User: fernando.vega
 Plot Device: HP DesignJet 5000

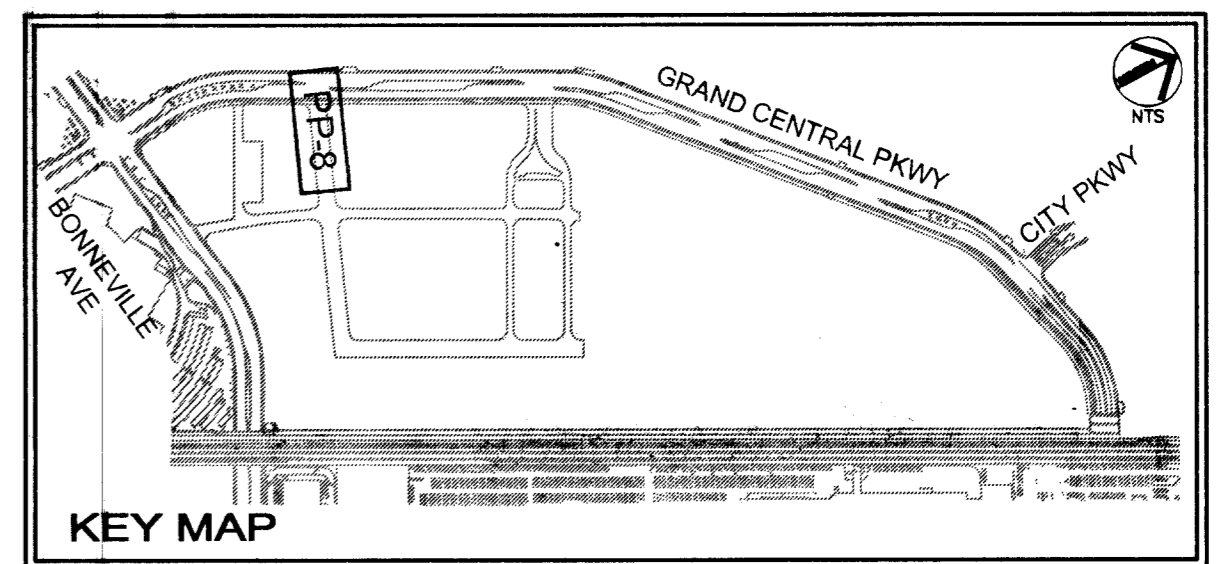


PLAN VIEW - WEST CLARK AVENUE



PROFILE VIEW - WEST CLARK AVENUE

SCALE: (H) 1" = 20'
(V) 1" = 2'



BASIS OF BEARING

NORTH 03°50'03" WEST, BEING THE BEARING OF A PORTION OF THE CENTERLINE OF GRAND CENTRAL PARKWAY, AS SHOWN ON BOOK 43, PAGE 61 OF PLATS ON FILE AT THE CLARK COUNTY, NEVADA RECORDER'S OFFICE

BENCHMARK

CITY OF LAS VEGAS VERTICAL CONTROL POINT "0LV01 33E6", BEING A RIVET AND PLATE IN TOP OF CURB AT NW CORNER OF BONNEVILLE AVENUE & GRAND CENTRAL PARKWAY.

ELEVATION: 2036.09 (FEET)

620.6014 (METERS)
CITY OF LAS VEGAS VERTICAL CONTROL v.2002 BASED ON NORTH AMERICAN VERTICAL DATUM OF 1988 (NAVD 88).

ROADWAY CONSTRUCTION NOTES

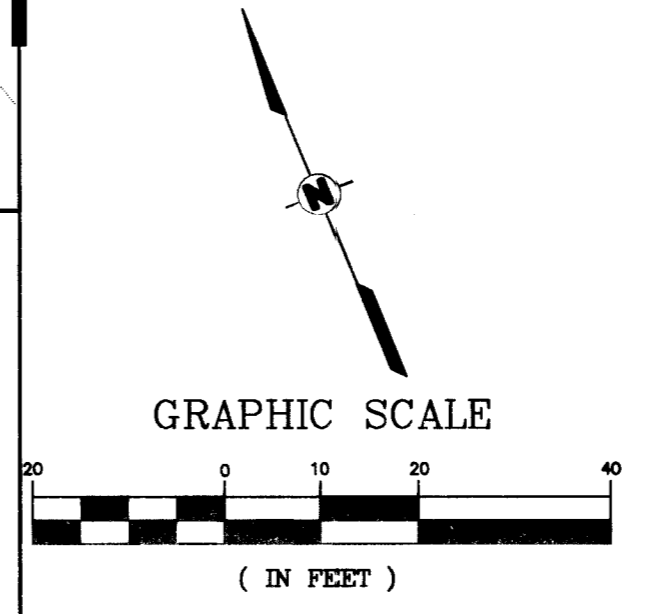
- 1 INSTALL PAVEMENT SECTION TO LIMITS SHOWN ON PLANS. SEE TYPICAL SECTIONS SHEETS TYP-1 AND TYP-2 FOR STRUCTURAL DIMENSIONS AND DETAILS.
- 3 INSTALL MODIFIED TYPE "L" CURB W/ CATCH GUTTER PER SECTION DETAIL ON SHEET DT-1.
- 6 MATCH EXISTING CONSTRUCTION BY OTHERS.
- 9 CONNECT CURB AND GUTTER TO EXISTING.
- 14 DRAINAGE INLET-SHOWN AS REFERENCE.

GENERAL NOTES

- 1. CURVE DATA FOR THE CURB AND GUTTER IS AT THE BACK OF CURB.

RELATED TABLES:

LINE	LENGTH	BEARING
L1	295.15	N67°53'54"W
L2	302.50	N67°53'54"W



PROJECT: UNION PARK PHASE 1
 PLAN & PROFILE WEST CLARK AVENUE STA: 70+00 - 73+50
 SHEET: PP-8
 DATE: 6/30/08
 DRAWN BY: KHA
 DESIGNED BY: PAB
 CHECKED BY: DWW
 SCALE: 1" = 20'
 SCALE: 1" = 2'
 DATE: November 2007
 Kimley-Horn and Associates, Inc.
 Engineering, Planning, and Environmental Consultants
 2080 East Flamingo Road Suite 210
 Las Vegas, Nevada 89119
 TEL No. (702) 734-5666
 FAX No. (702) 735-4949
 09/25/07/003 - UNION PARK PHASE 1
 REV DATE BY

SAFETY ALERT
 Call before you Dig
 Call Before You Overhead
 811
 1-702-227-2929
 Avoid cutting underground utility lines. It's costly.
 Call before you dig. Call before you overhead.
 UnderGround
 1-702-455-7511
 CLARK COUNTY TRAFFIC OPERATIONS AND
 1-702-229-6611
 LAS VEGAS AREA COMPILED TRAFFIC SYSTEM

STATE OF NEVADA
 DEPARTMENT OF PUBLIC WORKS
 DAVID D. WILSON
 Exp. 6/30/08
 REG. NO. 8441
 507V.07
 SHEET NO. PP-8
 SHEET 37 OF 166
 107V4816

107350

H# 18393