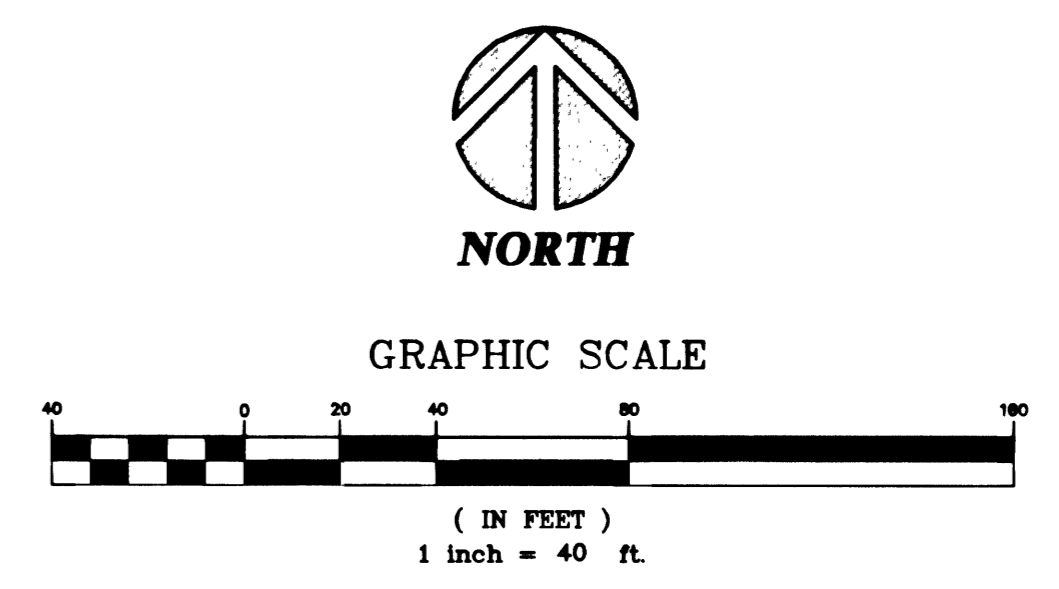
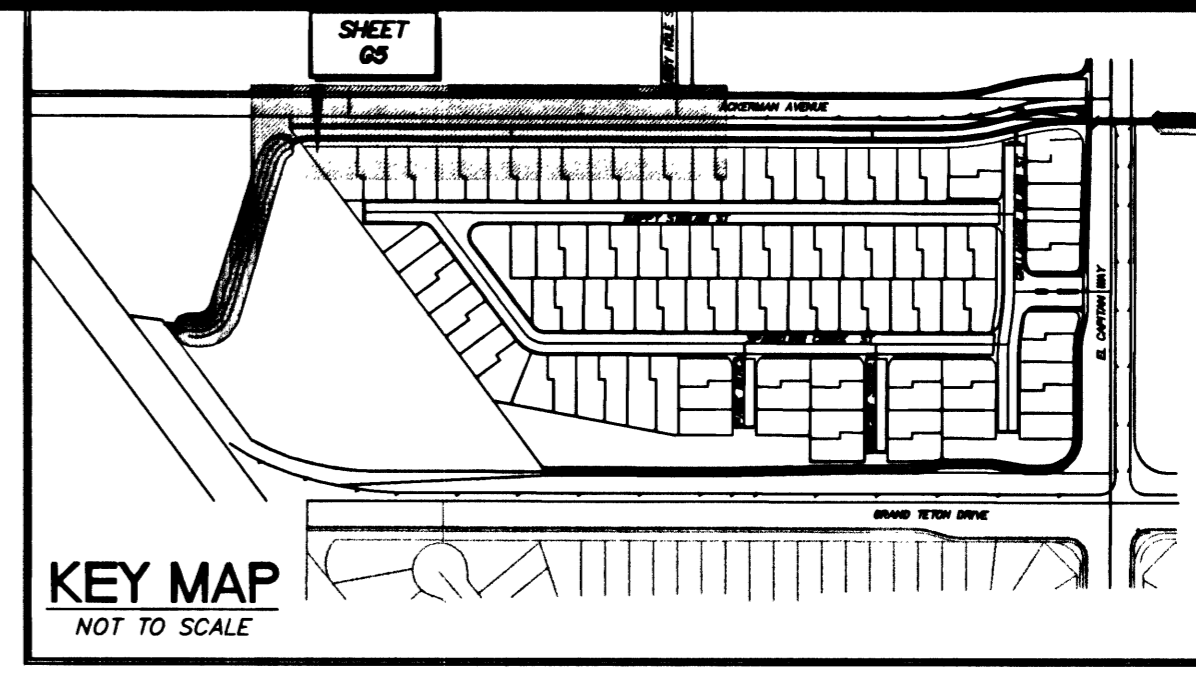
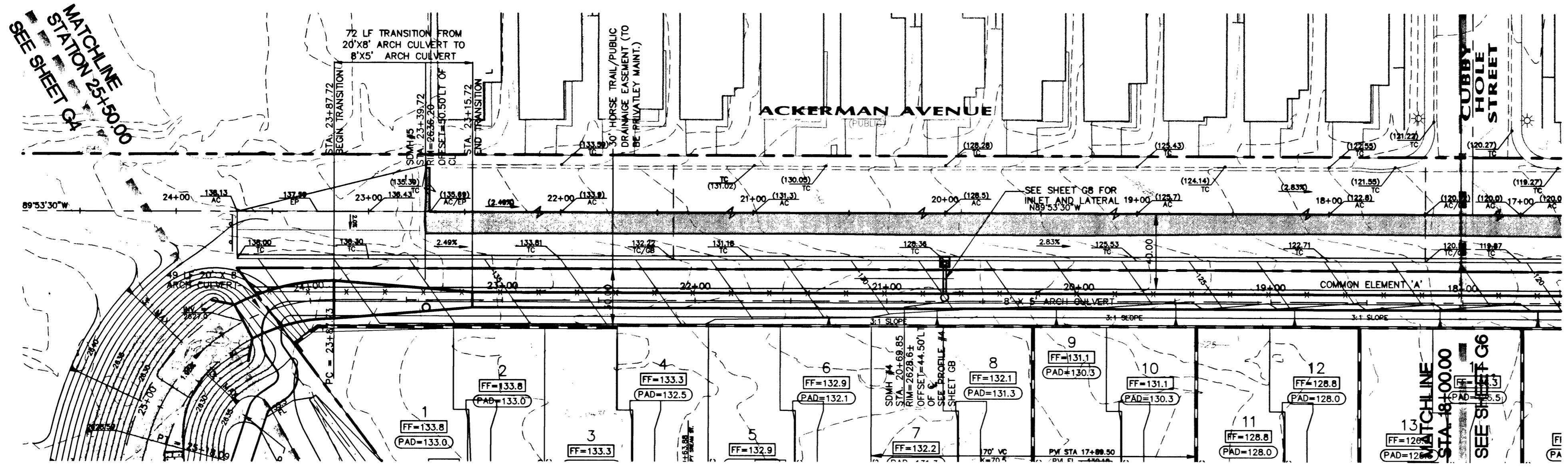


Call before  
you Dig  
1-800-227-2600

Call before  
you Overhead  
1-702-593-6111

MATCHLINE  
STATION 25+50.00  
SEE SHEET G4



DESIGNED BY:	J.T.C.
DRAWN BY:	B.W.A.
CHECKED BY:	P. SMITH
PROJECT DATE:	4-24-02

TWILIGHT NORTH  
CITY OF LAS VEGAS

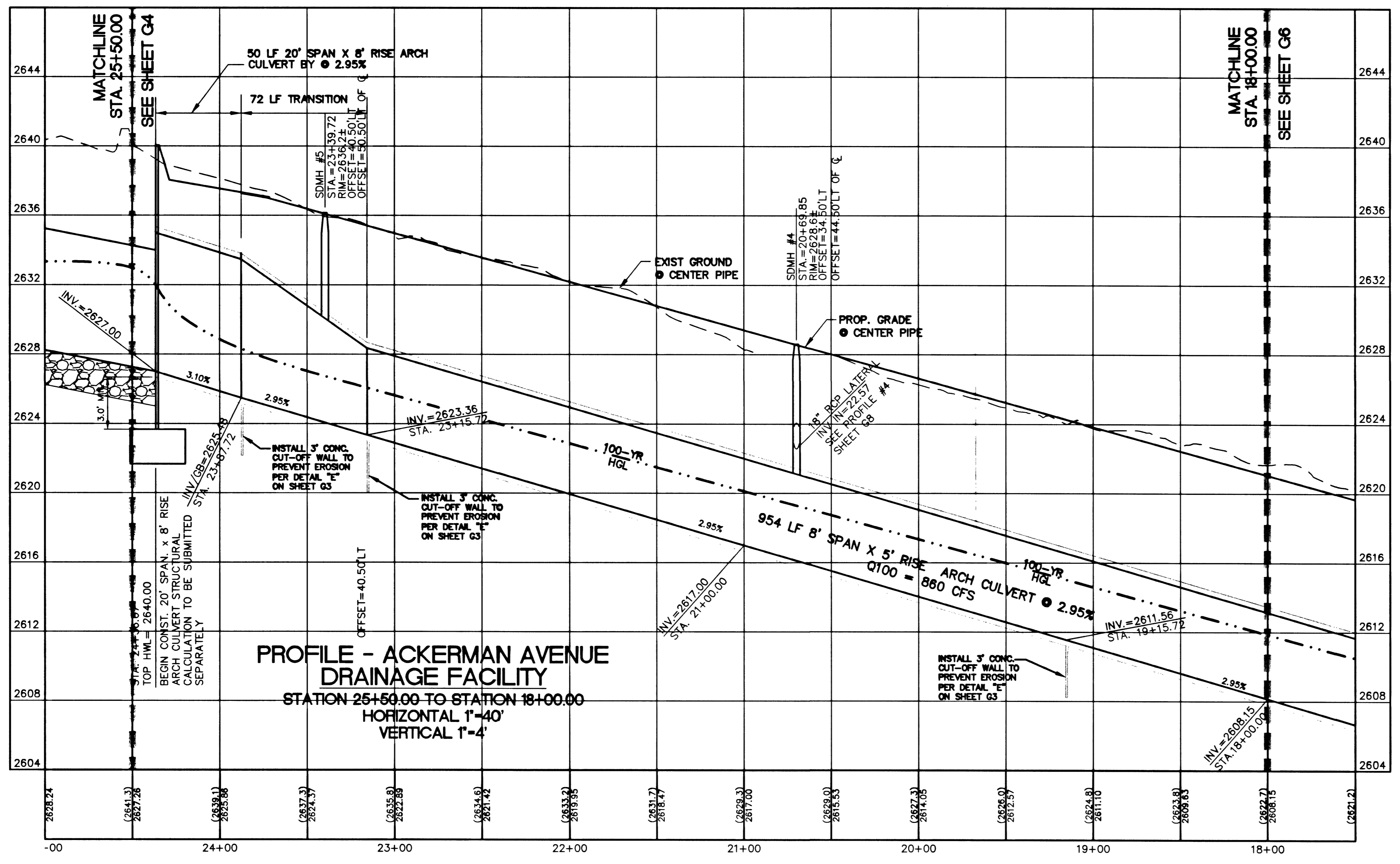
**CULVERT PLAN AND PROFILE  
STA. 25+50 TO 18+00**

DEVELOPER  
**D.R. HORTON**

PROFESSIONAL ENGINEER-STATE OF NEVADA  
DARREN M. BENCH  
No. 10547

6280 S. Valley View Blvd  
Suite 200  
Las Vegas, NV 89118  
Tel: (702) 368-3008  
Fax: (702) 368-0047

**CVL CONSULTANTS, INC.**  
ENGINEERING · PLANNING · LAND SURVEYING



**NOTE**  
PRIVATE STREETS ARE P.U.E.'s. CLV SEWER EASMENTS AND PUBLIC DRAINAGE EASEMENTS TO BE PRIVATELY MAINTAINED.

**BENCHMARK**  
Elevation = 2532.70 FEET (NAVD 88 DATUM)  
CITY OF LAS VEGAS BENCHMARK No. 1L908NS  
A BLM BRASS CAP AT THE INTERSECTION OF DURANGO DRIVE AND IRON MOUNTAIN ROAD  
NAVD 88 ELEVATION = 771.9659 METERS

**BASIS OF BEARINGS**  
NORTH 89°53'30" WEST, BEING THE BEARING OF THE SOUTH LINE OF THE SOUTHWEST QUARTER (SW 1/4) OF SECTION 8, TOWNSHIP 19 SOUTH, RANGE 80 EAST, M.D.M., CITY OF LAS VEGAS, CLARK COUNTY, NEVADA, AS SHOWN IN FILE 86 OF SURVEYS, PAGE 75, OFFICIAL RECORDS OF CLARK COUNTY, NEVADA.

I CERTIFY THAT THIS GRADING PLAN CONFORMS TO THE APPROVED DRAINAGE STUDY FOR THIS SITE ON FILE AT CITY OF LAS VEGAS PUBLIC WORKS

DARREN M. BENCH P.E. No. 10547

DATE: 5/3/02

3274-4701