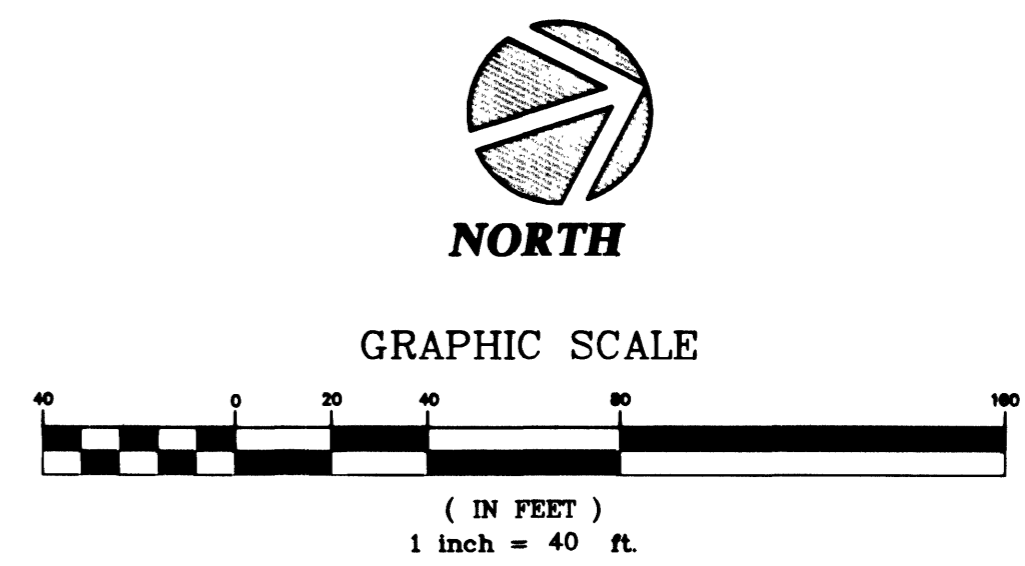
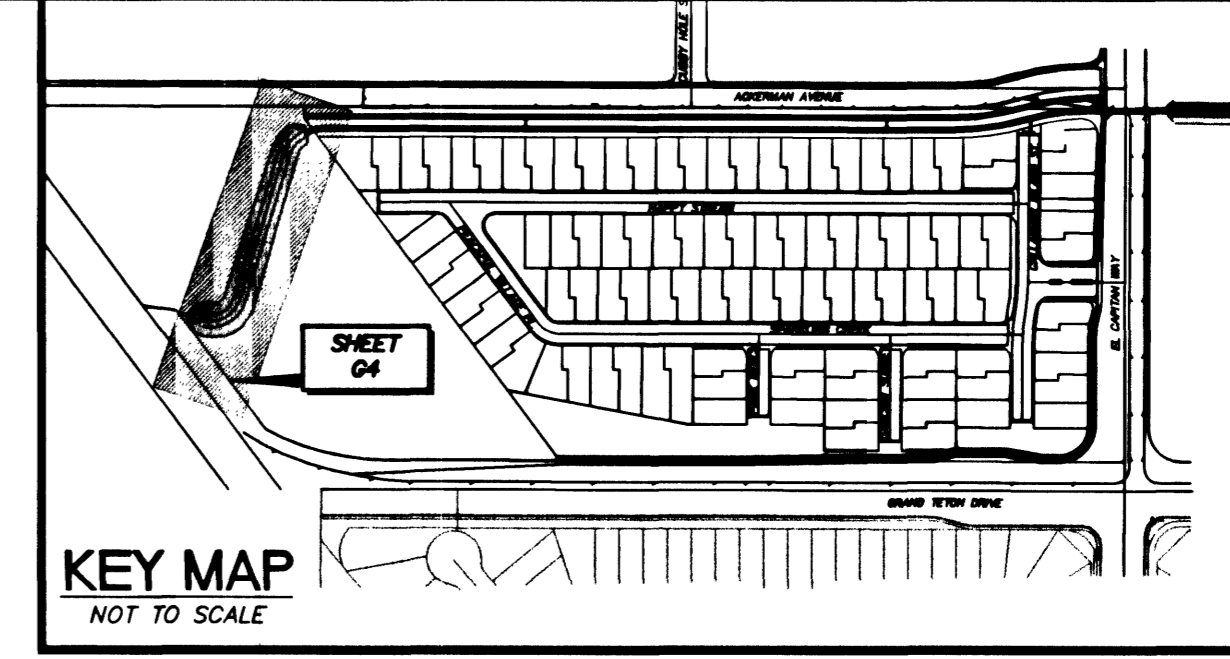
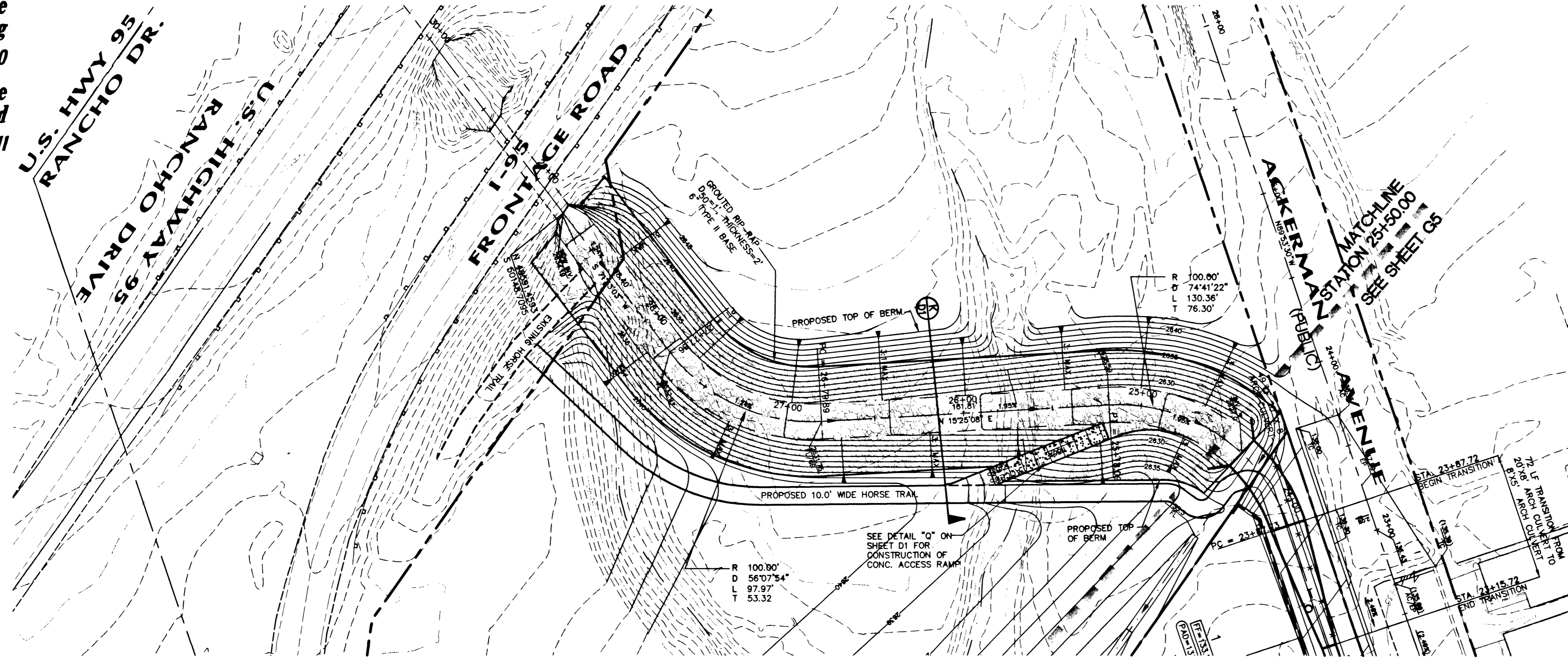


Call before
you Dig
1-800-227-2600
Call before
you Overhead
1-702-593-6111

U.S. HWY 95
RANCHO DR.
66 RANCHO DRIVE
U.S. HIGHWAY 95



NO.	REVISION	DATE	BY	DATE	DATE
1			J.T.C.		
2			B.W.A.		
3			P. SMITH		
4					
5					
6					

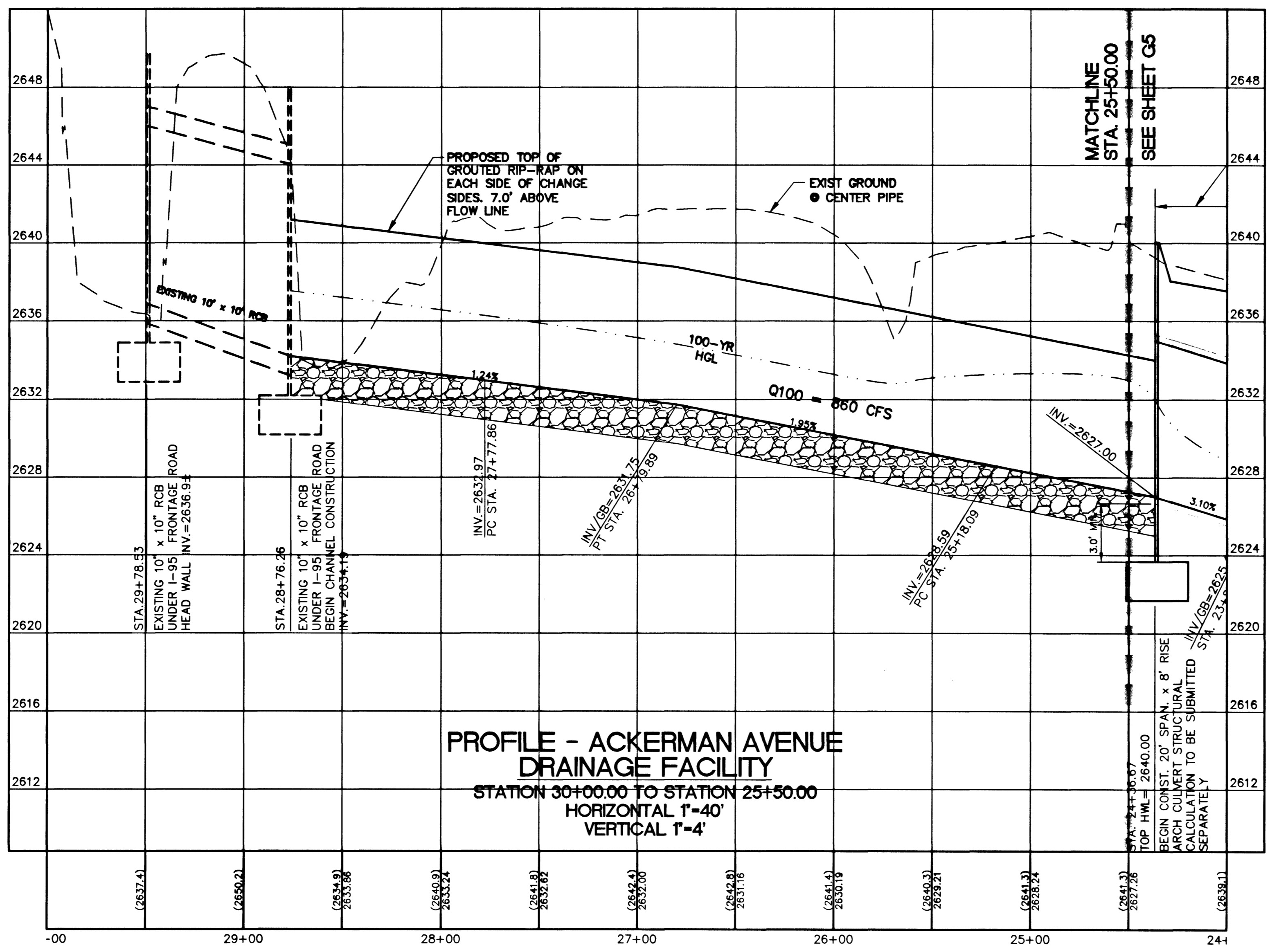
NEVADA
CITY OF LAS VEGAS
TWILIGHT NORTH
CULVERT PLAN AND PROFILE
STA. 30+00 TO 25+50

DEVELOPER
D.R. HORTON
PROFESSIONAL ENGINEER-STATE OF NEVADA
DARREN M. BENCH
No. 10574

6280 S. Valley View Blvd
Suite 200
Las Vegas, NV 89118
Tel: (702) 368-3008
Fax: (702) 368-0047

CVL
CONSULTANTS, INC.
ENGINEERING · PLANNING · LAND SURVEYING

SHEET
G4
11 OF 25
AGENCY DWG. NO.
327Y-470



ESTIMATE FLOOD PROTECTION QUANTITIES

DESCRIPTION	PUBLIC	PRIVATE
20' x 8' ARCH CULVERT	49 LF	- LF
8' x 5' ARCH CULVERT	1416 LF	- LF
TRANSITION ARCH CULVERT 20' x 8' TO 8' x 5'	72 LF	- LF
HEADWALL STRUCTURE FOR 20' x 8' ARCH CULVERT	1 EA	- EA
HEADWALL STRUCTURE FOR 8' x 5' ARCH CULVERT	1 EA	- EA
4' NEEHAN DROP INLET	2 EA	- EA
16' NEEHAN DROP INLET	2 EA	- EA
GROUTED RIP-RAP	350 CY	- CY
CONC RAMP	690 SF	- SF
3' VALLEY GUTTER	200 LF	- SF
9' CONC. CHANNEL SIDE SLOPES	478 LF	- LF

NOTE:
PRIVATE STREETS ARE P.U.E.'S. CLV SEWER EASEMENTS AND PUBLIC DRAINAGE EASEMENTS TO BE PRIVATELY MAINTAINED.

BENCHMARK
Elevation = 2532.70 FEET (NAVD 88 DATUM)
CITY OF LAS VEGAS BENCHMARK No. 1LV908NS
A BLM BRASS CAP AT THE INTERSECTION OF DURANGO DRIVE AND IRON MOUNTAIN ROAD
NAVD 88 ELEVATION = 771.9659 METERS

BASIS OF BEARINGS
NORTH 89°53'30" WEST, BEING THE BEARING OF THE SOUTH LINE OF THE SOUTHWEST QUARTER (SW 1/4) OF SECTION 8, TOWNSHIP 19 SOUTH, RANGE 60 EAST, M.D.M., CITY OF LAS VEGAS, CLARK COUNTY, NEVADA, AS SHOWN IN FILE 86 OF SURVEYS, PAGE 75, OFFICIAL RECORDS OF CLARK COUNTY, NEVADA.

I CERTIFY THAT THIS GRADING PLAN CONFORMS TO THE APPROVED DRAINAGE STUDY FOR THIS SITE ON FILE AT CITY OF LAS VEGAS PUBLIC WORKS

DARREN M. BENCH P.E. No. 10547
5/16/02

CVL Proj. No.

41123