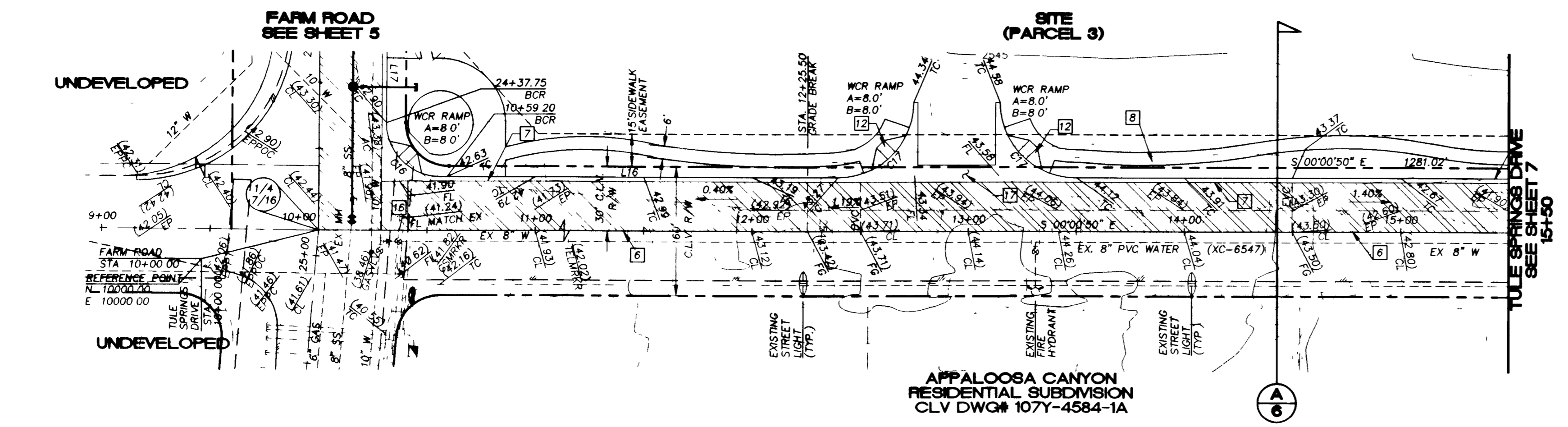
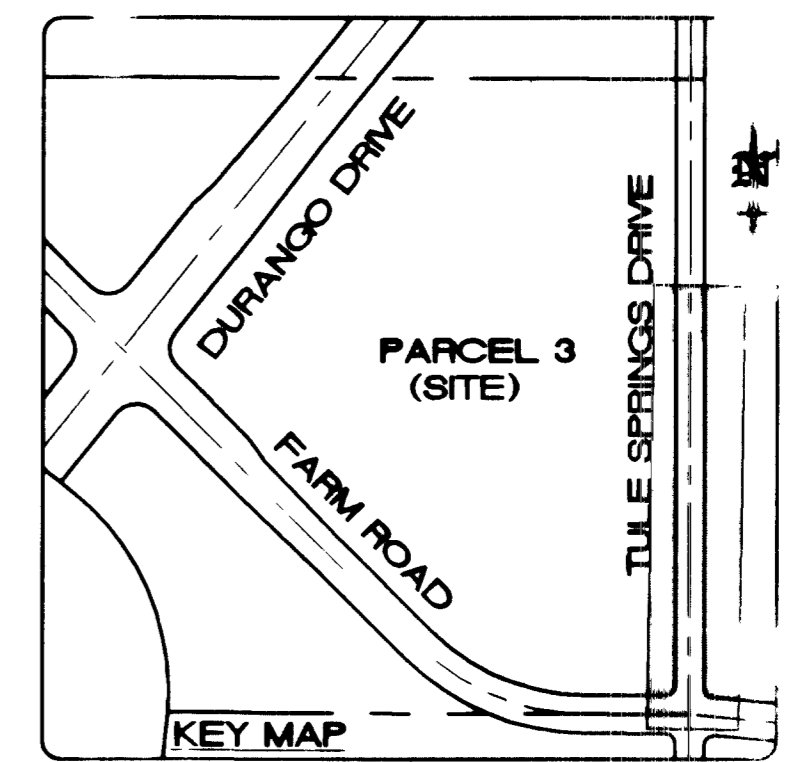


**DISCLAIMER NOTE**  
 UTILITY LOCATIONS SHOWN HEREON ARE APPROXIMATE ONLY. IT SHALL BE THE CONTRACTOR'S RESPONSIBILITY TO DETERMINE THE EXACT HORIZONTAL AND VERTICAL LOCATION OF ALL EXISTING UNDERGROUND OR OVERHEAD UTILITIES PRIOR TO COMMENCING CONSTRUCTION. NO REPRESENTATION IS MADE THAT ALL EXISTING UTILITIES ARE SHOWN HEREON. THE ENGINEER ASSUMES NO RESPONSIBILITY FOR UTILITIES NOT SHOWN OR UTILITIES NOT SHOWN IN THEIR PROPER LOCATION.

**Call before you Dig.**  
 1-800-227-2600

**Call before you Overhead.**  
 1-702-593-6111

- LEGEND**
- EXISTING CONTOURS (1 FOOT)
  - EXISTING CONTOURS (5 FOOT)
  - EXISTING TOP OF CURB ELEVATION
  - FLOWLINE ELEVATION
  - FINISHED GRADE ELEVATION
  - TOP OF CURB ELEVATION
  - RATE & DIRECTION OF SLOPE
  - RETAINING WALL (PER CLV STANDARD)
  - PERMETER BLOCK WALL (PER CLV STANDARD)
  - GRADEBREAK
  - 8" PVC WATER
  - FIRE HYDRANT ASSEMBLY
  - 8" x 8" x 8" TEE
  - 2" BLOWOFF ASSEMBLY
  - 8" GATE VALVE
  - 48" SANITARY SEWER MANHOLE
  - 8" PVC SANITARY SEWER MAIN (PUBLIC)



**BACK OF CURB DATA**

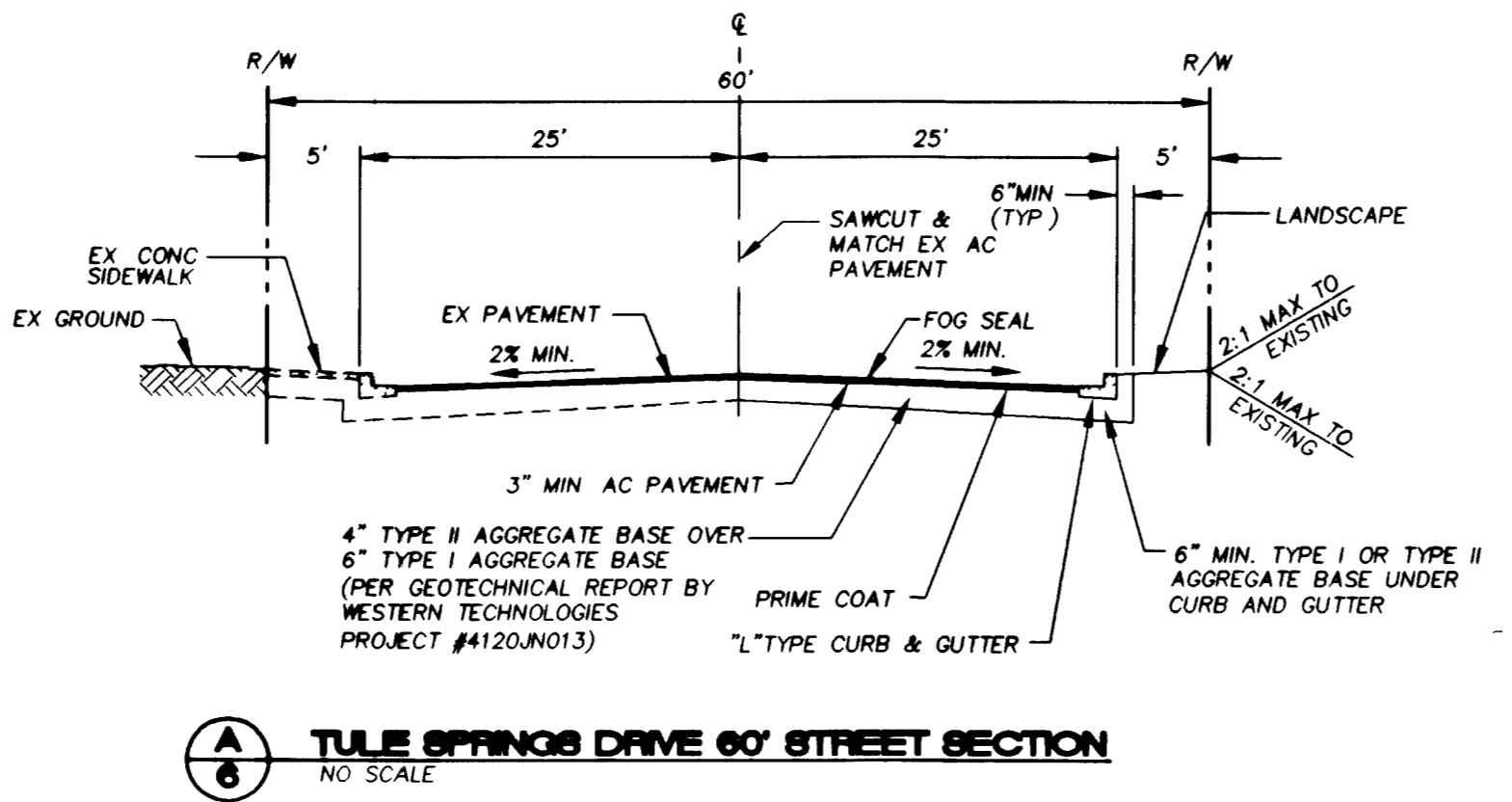
LINE TABLE			CURVE TABLE				
NO.	BEARING	DISTANCE	NO.	RADIUS	DELTA	LENGTH	TANGENT
L1	S38°29'08"W	27.97	C1	25.00	133°57'33"	6.09	1.06
L2	S38°29'08"W	45.34	C2	35.00	99°29'39"	4.14	1.06
L3	S37°13'28"W	13.47	C3	35.00	88°44'20"	38.72	4.46
L4	S23°15'55"W	35.33	C4	30.00	83°18'47"	43.62	26.69
L5	S37°13'28"W	74.88	C5	25.00	91°15'40"	39.82	25.56
L6	S46°43'07"W	56.47	C6	31.00	181°3'01"	28.53	14.53
L7	S37°13'28"W	27.93	C7	109.00	16°57'21"	32.28	16.28
L8	S38°29'08"W	218.83	C8	469.00	18°48'32"	153.96	77.68
L9	S44°49'39"E	138.91	C9	35.00	116°22'39"	71.09	46.42
L10	N44°49'39"W	20.47	C10	35.00	76°16'33"	46.59	1.48
L11	S43°33'59"E	161.66	C11	469.00	03°28'09"	28.12	14.07
L12	S44°49'39"E	254.41	C12	25.00	17°10'09"	7.49	1.77
L13	N81°04'59"E	34.23	C13	25.00	113°22'28"	5.04	2.53
L14	S89°47'08"E	56.07	C14	25.00	09°47'00"	4.27	2.14
L15	S80°00'08"E	53.37	C15	25.00	121°3'33"	5.33	2.68
L16	N00°00'50"W	183.36	C16	25.00	90°13'42"	39.71	25.10
L17	N89°47'08"W	47.52	C17	35.00	90°00'00"	54.98	35.00
L18	N00°00'50"W	991.66	C18	25.00	90°00'00"	39.27	25.10

I CERTIFY THAT THIS GRADING PLAN IS IN CONFORMANCE WITH THE APPROVED DRAINAGE STUDY ON FILE AT THE CITY OF LAS VEGAS FOR THIS PROJECT.

*Brian P. Norris*  
 BRIAN P. NORRIS, P.E. NO. 14449  
 11/18/00 DATE

**BENCHMARK (CITY OF LAS VEGAS)**  
 BEING CITY OF LAS VEGAS BENCHMARK 1LV90 16W4, BEING A BLM BRASS CAP AT DURANGO DRIVE AND FARM ROAD. PUBLISHED ELEVATION = 774.2201 METERS NAVD88 DATUM. CONVERTED ELEVATION = 2541.73 FEET NAVD88 DATUM.  
 NOTE: THE CLARK COUNTY BENCHMARK WAS UTILIZED FOR THIS PROJECT AND THE CITY OF LAS VEGAS BENCHMARK WAS TIED INTO THE COUNTY BENCHMARK. PLEASE NOTE THAT THE CITY OF LAS VEGAS BENCHMARK IS 0.18 FEET HIGHER.

**BASIS OF BEARING**  
 BEING THE EAST LINE OF THE NE 1/4 SECTION 17, T19S, R60E, M.D.M., AS DEPICTED UPON THE FINAL MAP OF ELKHORN SPRINGS, - UNIT NO. 1, FILED OF RECORD IN BOOK 60 PAGE 72 OF PLATS, OFFICIAL RECORDS, CLARK COUNTY, NEVADA. SAID LINE BEARS N00°00'50"W.



**CONSTRUCTION NOTES**

- CONNECT TO EXISTING 12" WATER WITH 12"x12" TAPPING TEE
- STUB AND CAP 5' BEYOND PROPERTY LINE WITH A 2" BLOW OFF ASSEMBLY
- STUB & CAP FOR FUTURE USE
- INSTALL 1 1/2" (IRRIGATION) METER PER U.D.A.C.S. PLATE NO. 1C
- REMOVE AND RELOCATE RIPRAP
- SAWCUT AND MATCH PAVEMENT
- CONSTRUCT 1" TYPE CURB AND GUTTER PER STD. DWG NO. 216
- CONSTRUCT 6" MEANDERING CONCRETE SIDEWALK PER C.D.A.S.D. NO. 234 SEE LANDSCAPE ARCHITECT PLANS
- INSTALL 1 1/2" (DOMESTIC) PUBLIC METER PER U.D.A.C.S. PLATE NO. 1C
- NOT USED
- STA. 15+96.04 CONNECT 45 LF 2" WATER TO EX. 8" PVC WATER
- CONSTRUCT SIDEWALK RAMP PER DETAIL "B" SHEET NO. 2
- REMOVE CAP, CONNECT TO EXISTING 12" PVC WATER
- REMOVE EXISTING STUB, CONNECT TO EXISTING MANHOLE
- STUB AND CAP 5' BEYOND PROPERTY LINE
- REMOVE PORTION OF EXISTING VALLEY GUTTER, CONSTRUCT PARTIAL VALLEY AND SPANDREL TO MATCH
- CONSTRUCT 8" VALLEY GUTTER PER STD. DWG NO. 228

PROJECT NAME: Tule Springs Commercial Center.  
 This project water plan complies with the Las Vegas Valley Water District's technical requirements. However, this water plan is NOT APPROVED FOR CONSTRUCTION at this time and this signature does not provide or imply a water commitment.

*James E. Rankins*  
 JAMES E. RANKINS, P.E. NO. 14449  
 11-23-00 DATE

**APPROVALS**

*B.P.N.*  
 LAS VEGAS, NV  
 11-18-00

DESIGNED BY: RAY  
 CHECKED BY: GUV  
 NO.

DRAWN BY: RAY  
 JOB NUMBER: 042-9001  
 REVISION

DATE: 10-25-00  
 BY: DATE

PLAN AND PROFILE TULE SPRINGS DRIVE  
 STA. 10+00.00 TO 15+50.00  
 INFRASTRUCTURE PLANS FOR TULE SPRINGS VILLAGE COMMERCIAL CENTER  
 ALBERTSONS  
 250 PARKER CENTER BLVD., BOISE, IDAHO 83706  
 NEVADA  
 CITY OF LAS VEGAS

ORION ENGINEERING AND SURVEYING, INC.  
 3068 E. SUNSET ROAD, SUITE 9  
 LAS VEGAS, NEVADA 89120  
 (702) 739-5921 FAX (702) 739-5923

