

BASIS OF BEARINGS

NORTH 86°19'48" WEST - BEING THE SOUTH LINE OF THE NORTHEAST QUARTER (NE 1/4) OF SECTION 27, TOWNSHIP 19 SOUTH, RANGE 60 EAST, M.D.M., AS SHOWN BY MAP THEREOF IN BOOK 3 OF PLATS, PAGE 98 (TROPICAL PARK SUBDIVISION), OFFICIAL RECORDS, CLARK COUNTY, NEVADA.

BASIS OF ELEVATIONS

CITY OF LAS VEGAS B.M. NO. 8LV90 27E6 ELEVATION = 713.249 MT/2340.05 FT (NAVD 88) RIVET AND ROUND PLATE IN THE TOP OF CURB AT THE NORTHEAST CORNER OF TROPICAL PKWY AND RIO VISTA STREET.

NOTE: ADD 2300 FEET TO GRADES THIS DRAWING FOR TRUE ELEVATION

LEGAL DESCRIPTION

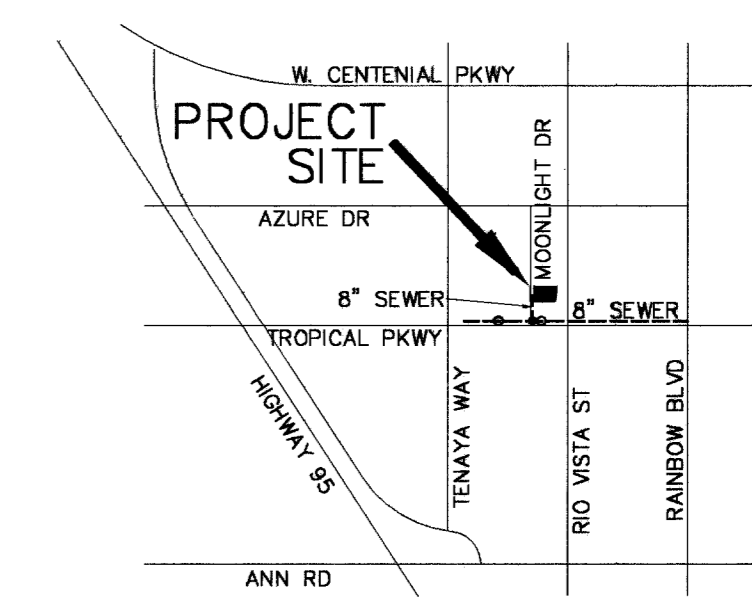
LOT 54 OF TROPICAL PARK SUBDIVISION - BOOK 3 OF PLATS, PAGE 98, OFFICIAL RECORDS, IN THE SOUTHWEST QUARTER (SW 1/4) OF THE NORTHEAST QUARTER (NE 1/4) OF SECTION 27, TOWNSHIP 19 SOUTH, RANGE 60 EAST, M.D.M., CLARK COUNTY, NEVADA.
A.P.N. - 125-27-610-053

**ESTIMATED QUANTITIES
PUBLIC SEWER**

8" PVC GRAVITY SEWER 396 L.F.
48" DIA CONCRETE MANHOLE 2 EA.
4" PVC SEWER LATERAL 13 L.F.

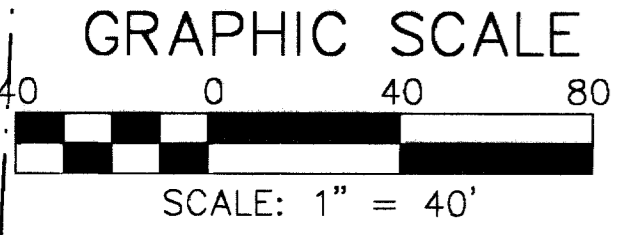
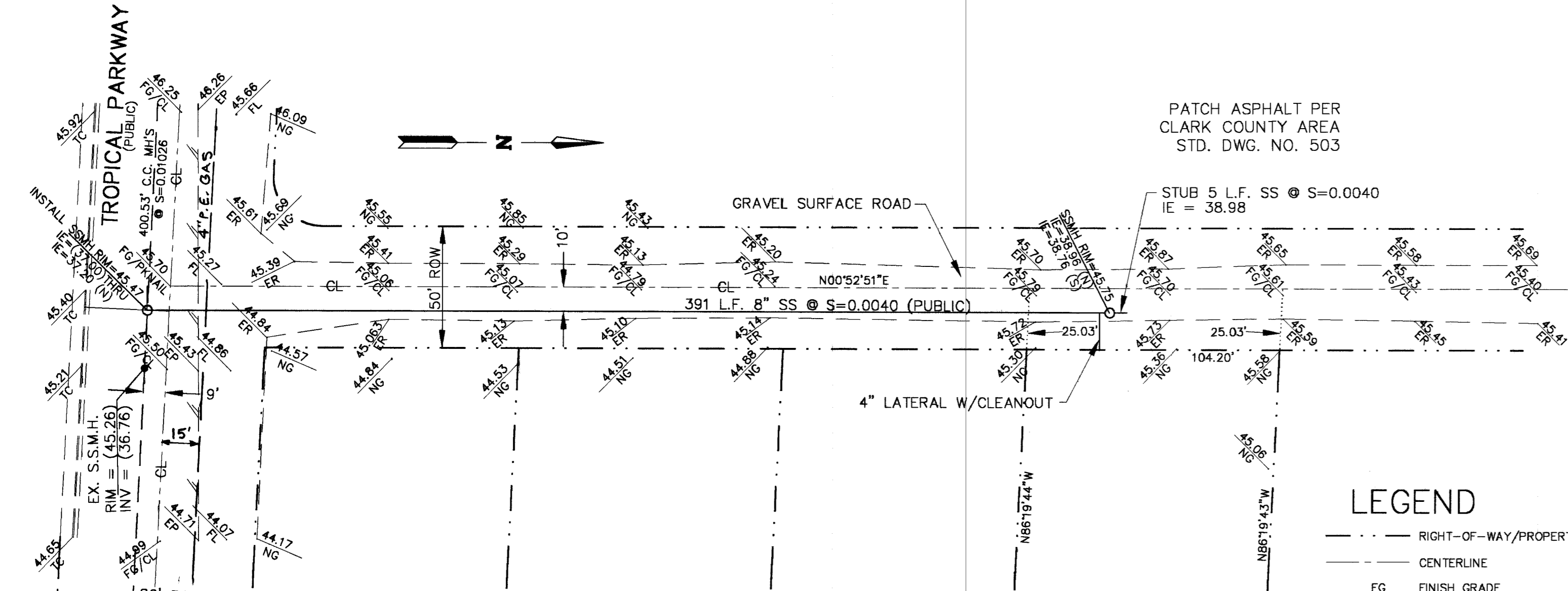
Call Before You Dig
1-800-227-2600
UNDERGROUND SERVICE, U.S.A.

NOTE:
EXISTING UTILITY LOCATIONS SHOWN HEREIN ARE APPROXIMATE ONLY. IT SHALL BE THE CONTRACTOR'S RESPONSIBILITY TO DETERMINE THE EXACT VERTICAL AND HORIZONTAL LOCATION OF ALL EXISTING UNDERGROUND UTILITIES PRIOR TO COMMENCING CONSTRUCTION. NO REPRESENTATION IS MADE THAT ALL EXISTING UTILITIES ARE SHOWN HEREON. THE ENGINEER ASSUMES NO RESPONSIBILITY FOR UTILITIES NOT SHOWN OR UTILITIES NOT SHOWN IN THEIR PROPER LOCATION.



CITY OF LAS VEGAS SEWER NOTES

- ALL CONSTRUCTION AND MATERIALS SHALL BE IN ACCORDANCE WITH THE LATEST EDITION OF THE DESIGN AND CONSTRUCTION STANDARD FOR WASTEWATER COLLECTION SYSTEMS AND THE UNIFORM STANDARD SPECIFICATIONS FOR PUBLIC WORKS' CONSTRUCTION OFF-SITE IMPROVEMENTS, CLARK COUNTY AREA, NEVADA, AS AMENDED. IT WILL BE THE RESPONSIBILITY OF THE CONTRACTOR TO BE AWARE OF THE CONTENTS OF THE ABOVE SPECIFICATIONS.
- IT SHALL BE THE CONTRACTOR'S RESPONSIBILITY TO PERFORM CONSTRUCTION AS PER PLANS. ANY ADDITIONS, DELETIONS, OR CHANGES SHALL FIRST MEET WITH THE APPROVAL OF THE CITY ENGINEER.
- CHISEL "S" OR "G" IN CURBS WHERE SEWER OR GAS LATERALS PASS UNDER THE CURB.
- POLYETHYLENE (PE) SEWER PIPE SHALL MEET ASTM D-3034 SDR 35 SPECIFICATIONS, INSTALLED WITH SAND BEDDING AND BACKFILL OF TYPE II AGGREGATE BASE.
- ALL MANHOLES PAVED IN STREETS EIGHT (8') FOOT R/W AND LARGER SHALL HAVE CONCRETE COLLARS. STREETS LESS THAN EIGHTY (80') FOOT R/W WILL REQUIRE RETROFIT IF PAVING DOES NOT CONFORM TO CITY STANDARDS AT THE MANHOLE.
- TEE SADDLES SHALL BE USED TO CONNECT SEWER LATERALS TO EXISTING MAIN LINES UP TO TWELVE INCH (12") DIAMETER. CONNECTIONS TO FIFTEEN INCH (15") OR LARGER MAINS SHALL REQUIRE SPECIAL PROCEDURES. IN LINE "YS" SHALL BE USED ON LINES TWELVE INCHES (12") OR ABOVE.
- A SEWER MAIN CROSSING OVER A WATER MAIN OR LESS THAN EIGHTEEN INCH (18") UNDER A WATER MAIN, MUST BE REINFORCED CONCRETE ENCASED FOR A DISTANCE NOT LESS THAN TEN FEET (10') TO EACH SIDE OF THE CENTERLINE OF THE WATER MAIN.
- ALL CONTRACTORS INSTALLING SEWER MAINS THAT WILL BE UNDER THE JURISDICTION OF THE CITY OF LAS VEGAS MUST BE STATE OF NEVADA CLASS "A" CONTRACTORS.
- THE CITY OF LAS VEGAS WILL NOT ACCEPT ANY SEWER MAINS WHICH HAVE A VERTICAL DEFLECTION OF MORE THAN ONE TENTH (0.1) OF A FOOT FROM THE APPROVED CONSTRUCTION PLANS AT ANY LOCATION. SEWER MAINS FOUND TO EXCEED THIS TOLERANCE WILL HAVE TO BE REPAIRED OR REMOVED AND REPLACED TO THE SATISFACTION OF THE CITY ENGINEER PRIOR TO ACCEPTANCE BY THE CITY OF LAS VEGAS.
- INSTALLATION OF CURVED SEWER REQUIRES SPECIAL CONSTRUCTION PROCEDURES AND INSPECTIONS. CONTACT CITY OF LAS VEGAS CONSTRUCTION SERVICES 24 HOURS PRIOR TO INSTALLATION.



MOONLIGHT DRIVE (PUBLIC)

SCALE: HORIZONTAL 1" = 40'
VERTICAL 1" = 4'

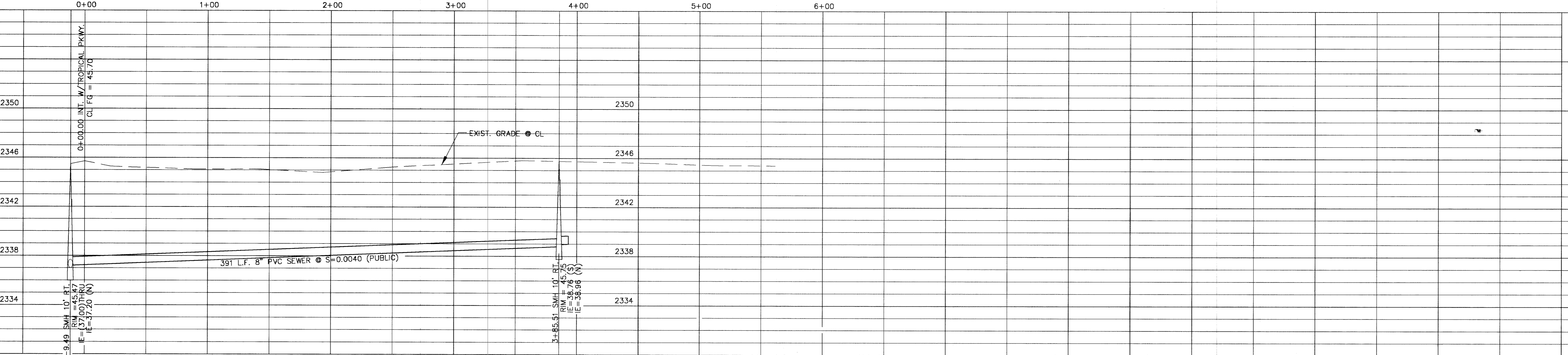
LEGEND

- - - RIGHT-OF-WAY/PROPERTY LINE
- - - CENTERLINE
- FG FINISH GRADE
- TC TOP OF CURB
- FL FLOW LINE
- CL CENTERLINE
- NG NATURAL GROUND
- ER EDGE OF GRAVEL ROAD
- EP EDGE OF PAVEMENT
- (05.4) EXISTING ELEVATION
- 05.4 NEW ELEVATION

TRENCH BACKFILL

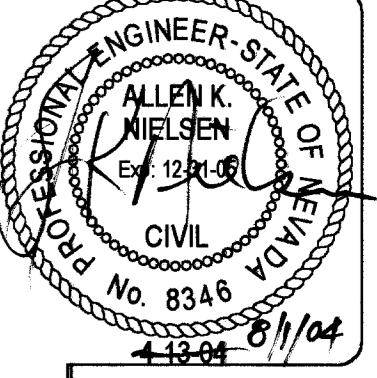
ALL TRENCH BACKFILL MUST MEET THE REQUIREMENTS AS SET FORTH IN THE UNIFORM STANDARD SPECIFICATIONS FOR PUBLIC WORKS' CONSTRUCTION, DESIGN AND CONSTRUCTION STANDARDS FOR WASTEWATER COLLECTION SYSTEMS 1991, UNIFORM STANDARD SPECIFICATIONS FOR PUBLIC WORKS' CONSTRUCTION OFF-SITE IMPROVEMENTS OR THE PROJECT GEOTECHNICAL REPORT RECOMMENDATIONS, WHICHEVER APPLIES.

SEWER FLOW	
AVE. FLOW	= 0.00023 M.G.D.
PEAK FLOW	= 0.00092 M.G.D.



REV	DATE	BY	REVISION

A K Nielsen
Consulting Engineers
2900 SOUTH RANCHO DRIVE, STE. 202
LAS VEGAS, NEVADA 89102
TEL. (702) 878-9885 FAX. (702) 871-4527



SEWER PLAN & PROFILE MOONLIGHT DRIVE
TAZ COFER
125-27-610-053
CLARK COUNTY, NEVADA

JOB No. _____
DESIGNED: AKN
DRAWN: AKN 4/04
CHECKED: _____
SHEET **2**
OF 2 SHEETS
CLV DWG. # **307V833**

72084