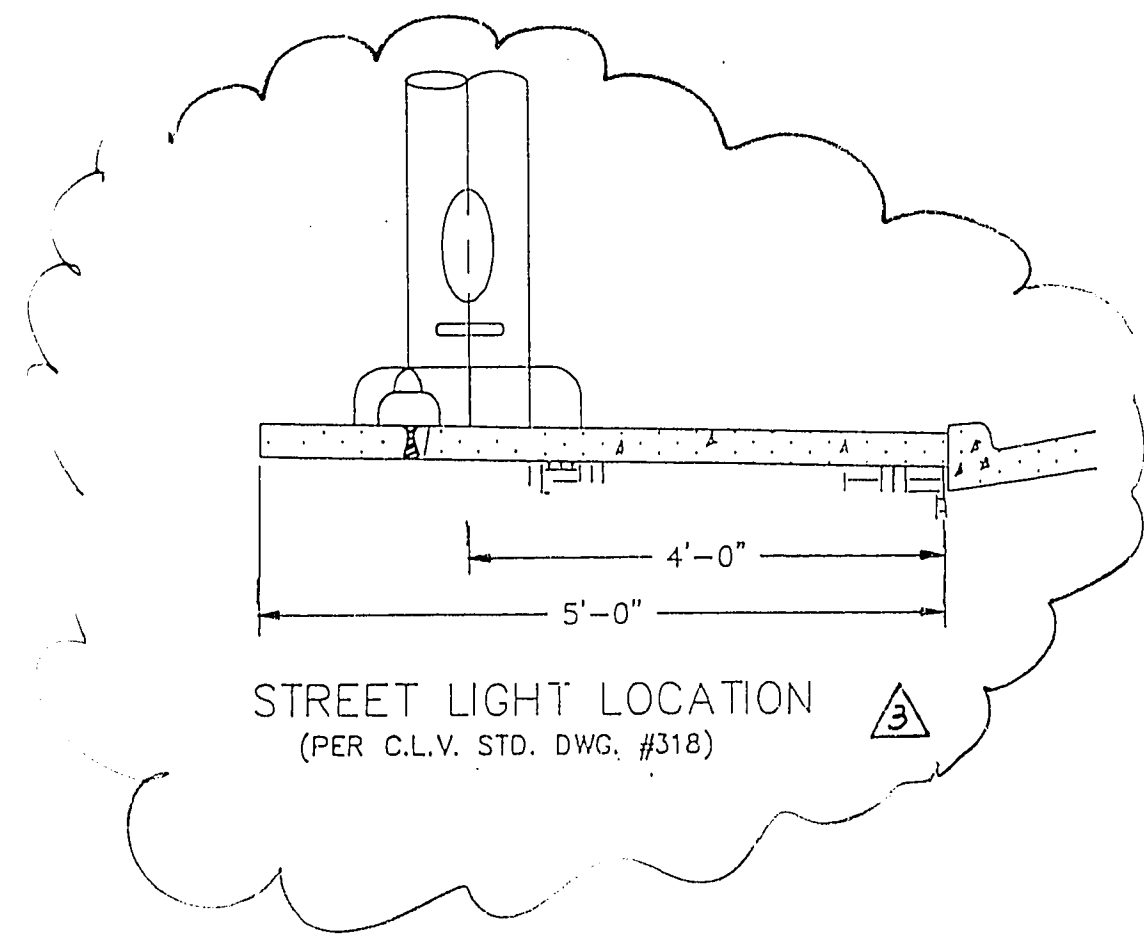


Rancho

Road



**Water Quantities**

	Unit 1	Unit 2
1 8" Watermain	1,186 L.F.	
2 8" Valve, B & C.	1 Ea.	
3 6" x 6" M.J. Tapping sleeve & 6" tapping valve, B & C.	1 Ea.	
4 6" Fire hydrant (Complete)	2 Ea.	1 Ea.
5 6" x 45' Bend	1 Ea.	
6 8" x 6" Reducer	1 Ea.	
7 3/4" copper Service Lateral w/ 3/4" meter (from LVVWD)	19 Ea.	38 Ea.
8 22 1/2" Bend	1 Ea.	

NOTE: Water service may only be installed to Unit 1, Lots 13-36, LOTS 38-47

**Street Light Quantities**

	Unit 1	Unit 2
11 100W H.P.S.	4 Ea.	2 Ea.
12 1 1/4" S.L. Conduit	740 L.F.	620 L.F.
13 200W H.P.S.		2 Ea.
14 #3 1/2 Pullbox		1 Ea.

**Sewer Quantities**

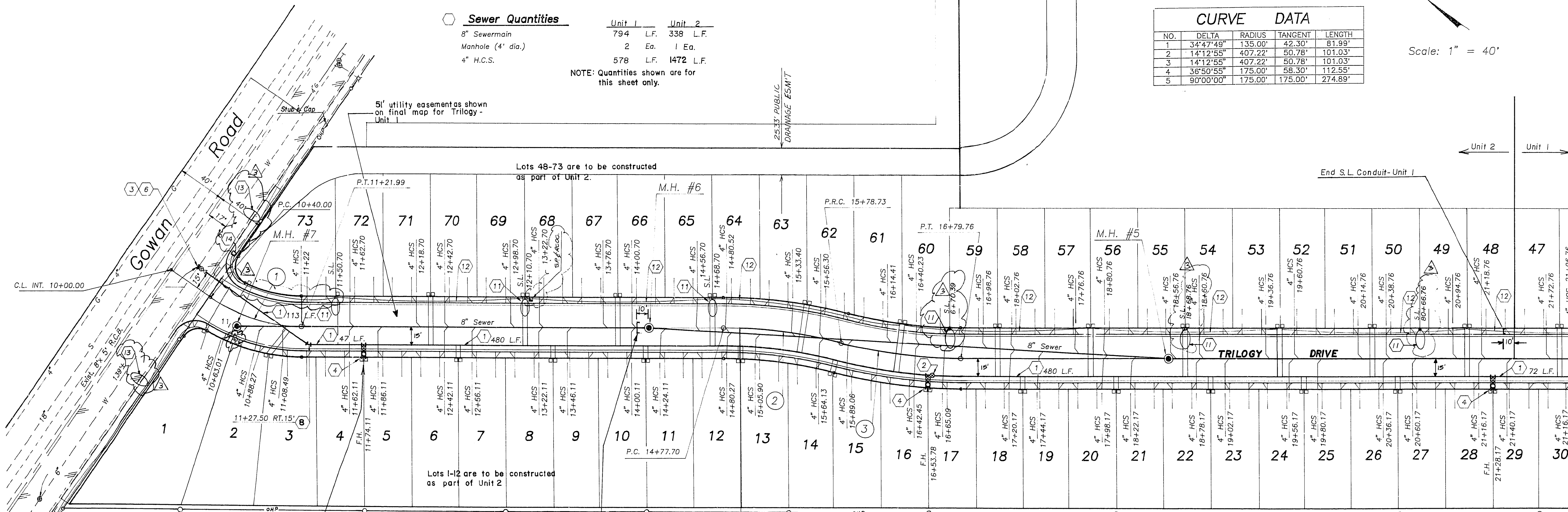
	Unit 1	Unit 2
8" Sewermain	794 L.F.	338 L.F.
Manhole (4' dia.)	2 Ea.	1 Ea.
4" H.C.S.	578 L.F.	1472 L.F.

NOTE: Quantities shown are for this sheet only.

**CURVE DATA**

NO.	DELTA	RADIUS	TANGENT	LENGTH
1	34°47'49"	135.00'	42.30'	81.99'
2	14°12'55"	407.22'	50.78'	101.03'
3	14°12'55"	407.22'	50.78'	101.03'
4	36°50'55"	175.00'	58.30'	112.55'
5	90°00'00"	175.00'	175.00'	274.89'

Scale: 1" = 40'



Match Line Sta. 22+00 See Sheet No. 7

NOTES

Fire Flow: 1500 G.P.M. @ 20 p.s.i.  
1500 sq. ft. max.  
V-N Construction

- Under Unit 1 Construction, install 4" HCS WYES for service to Lots 11-12 & 48-65. HCS extensions to E to be done under Unit 2.
- Under Unit 1 Construction, street lights from Sta 16+27.35 to Sta 21+06.76, total of 4 are to be built. Unit 2 will install Remaining 4 from Sta. 10+71.46 to 14+68.70
- Under Unit 1 Construction, service laterals for Lots 48-64 are to be extended to R for Unit 2 construction.

Approval  
 Unit 1: *[Signature]* 8/12/94 Date  
 LVVWD  
 Unit 2: LVVWD Date



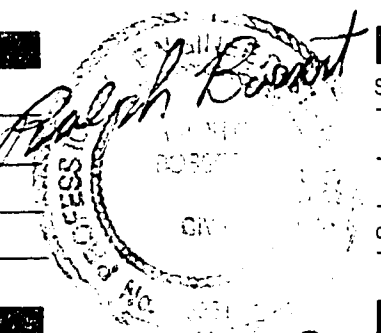
Engineering • Planning • Surveying  
 Landscape Architecture • Urban Design  
 Offices located in Tucson, Phoenix  
 Las Vegas, and Victor Valley, CA

Project: *Trilogy*

Master Utility & Street Light Plan

No.	Date	Item
1	9-8-94	Show Esmt - Lot 73
2	9-11-94	Revise Street Lights

Scale: 1" = 40'  
 Job No: 493019A-1  
 Date: 8-93  
 Drawn By: RRH  
 Checked By: ROB



Sheet 6 of 7

11-16-196 9/01/93 3074-4342