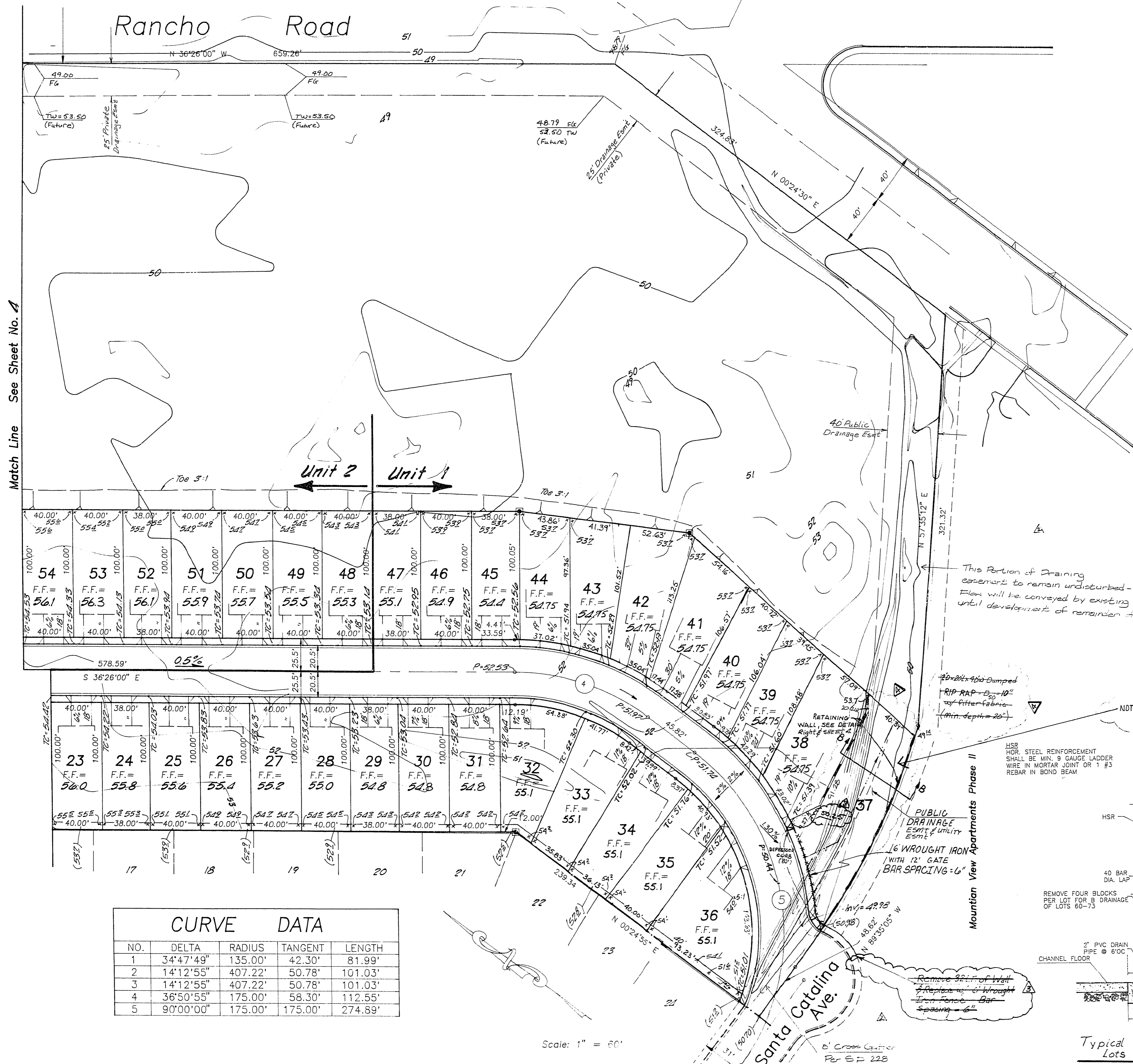


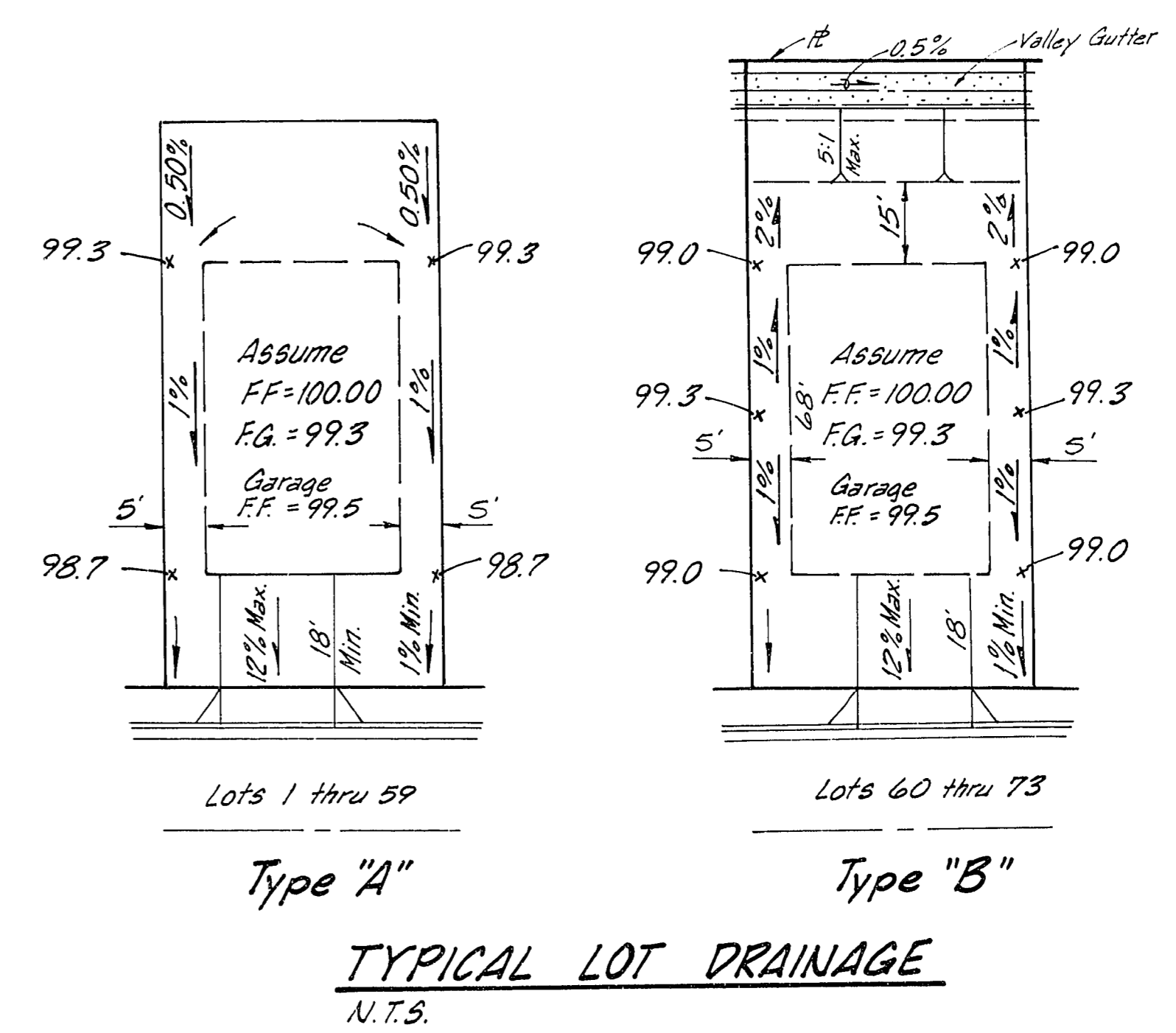
Rancho Road

Match Line See Sheet No. 4

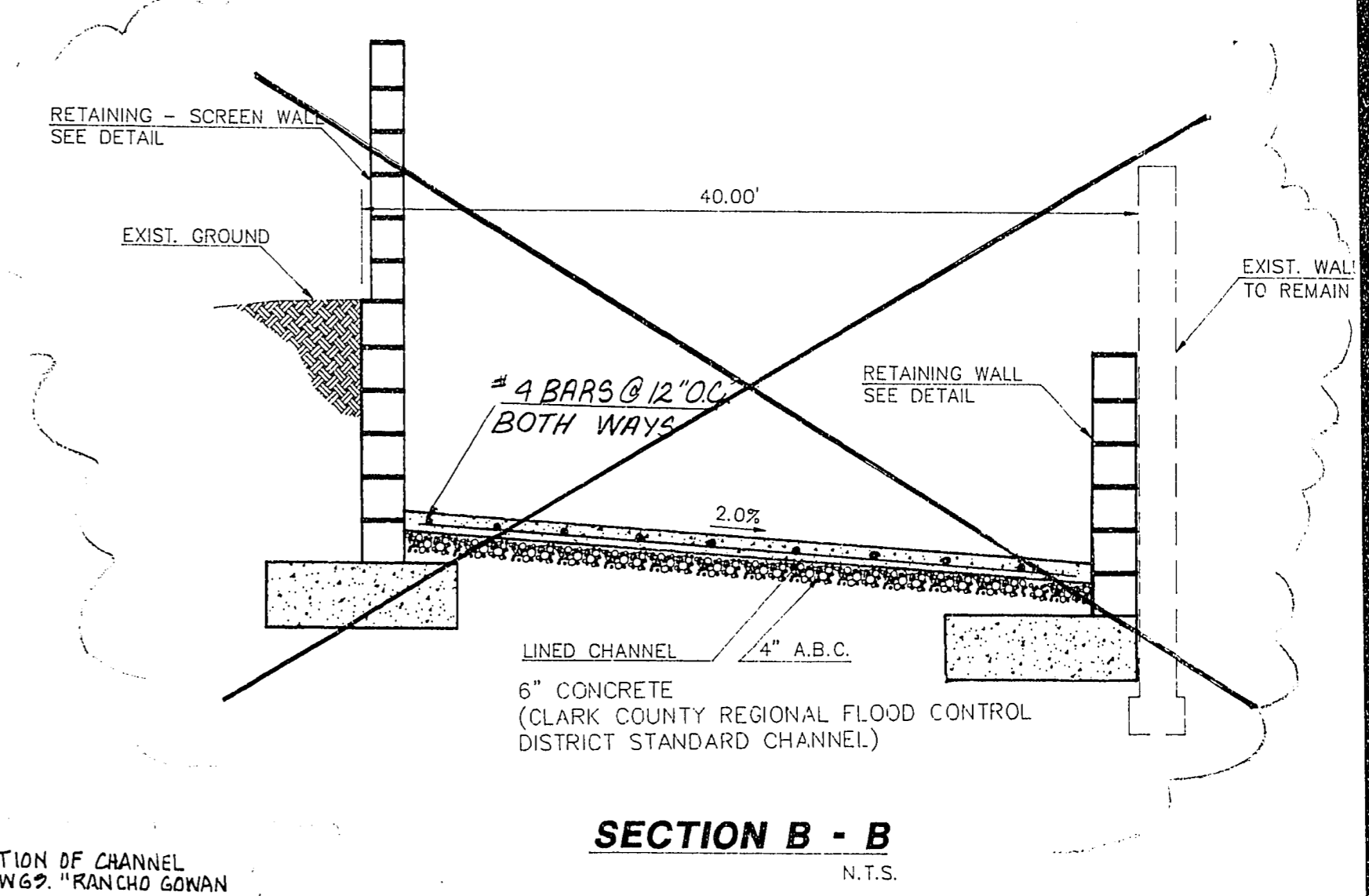


CURVE DATA				
NO.	DELTA	RADIUS	TANGENT	LENGTH
1	34°47'49"	135.00'	42.30'	81.99'
2	14°12'55"	407.22'	50.78'	101.03'
3	14°12'55"	407.22'	50.78'	101.03'
4	36°50'55"	175.00'	58.30'	112.55'
5	90°00'00"	175.00'	175.00'	274.89'

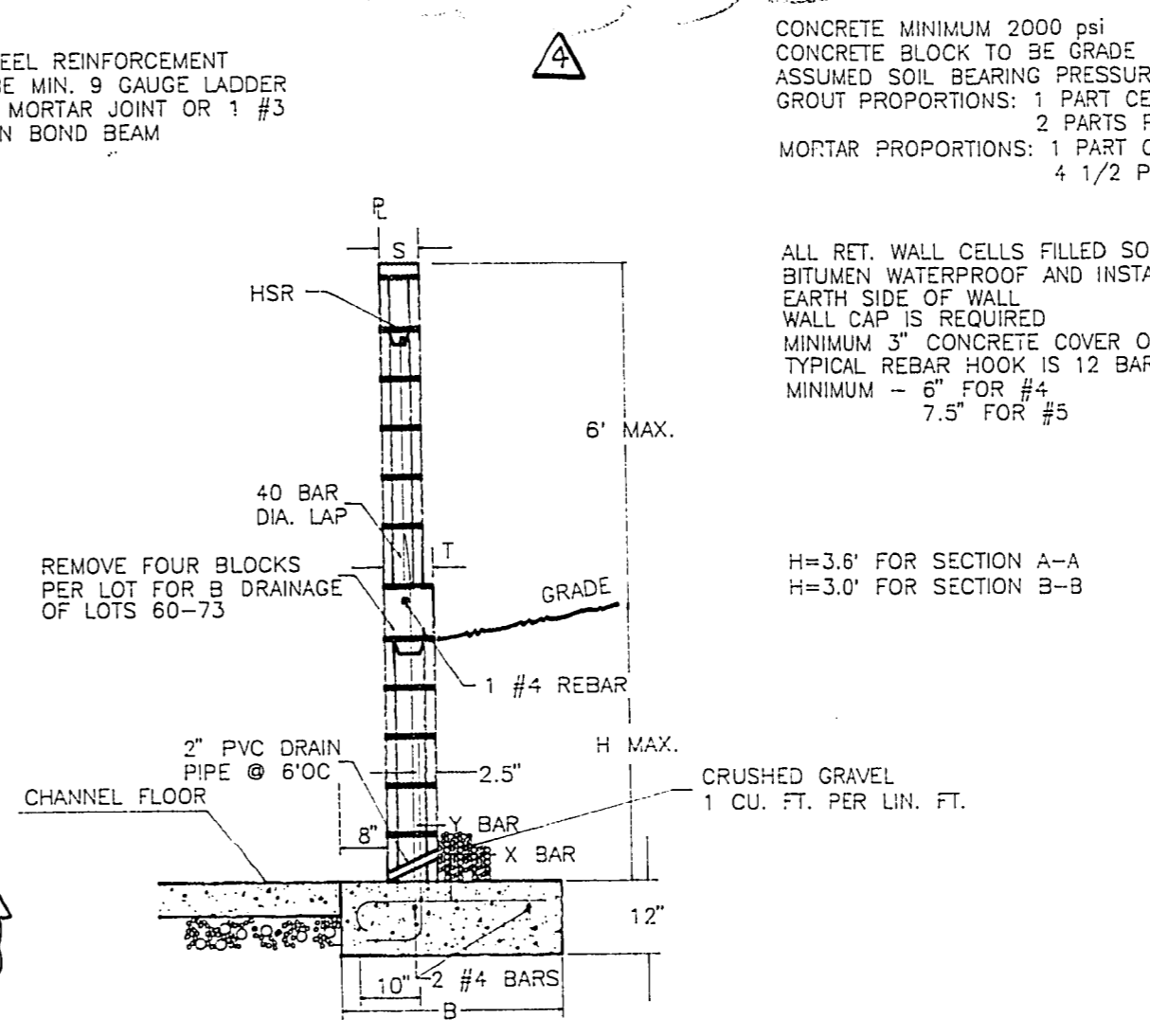
Scale: 1" = 60'



Typical Lot Drainage  
N.T.S.



SECTION B - B  
N.T.S.



Typical Retaining/Screen Wall Detail -  
Lots 1, 38, 60-73

NOTE: FOR THE CONSTRUCTION OF CHANNEL REFER TO VTN DWG. "RANCHO GONAN CHANNEL No. 2"

CONCRETE MINIMUM 2000 PSI  
CONCRETE BLOCK TO BE GRADE N FOR RETAINING WALLS  
ASSUMED SOIL BEARING CAPACITY IS 1000 PSF  
GROUT PROPORTIONS: 1 PART CEMENT, 3 PARTS SAND,  
2 PARTS PEA GRAVEL  
MORTAR PROPORTIONS: 1 PART CEMENT, 1 1/2 PART LIME,  
4 1/2 PARTS SAND

ALL RET. WALL CELLS FILLED SOLID WITH GROUT  
BITUMEN WATERPROOF AND INSTALL FIBER BOARD  
EARTH SIDE OF WALL  
WALL CAP IS REQUIRED  
MINIMUM 3" CONCRETE COVER OVER REBAR  
TYPICAL REBAR HOOK IS 12 BAR DIAMETER  
MINIMUM - 6" FOR #4  
7.5" FOR #5

FOR PLAN REVISION ONLY

FOR PLAN REVISION ONLY

REVISIONS REQUIRED

- FOOTING PRIOR TO PLACING CONCRETE
- WALL STEEL AT EACH CHANGE OF BLOCK SIZE BEFORE GROUTING
- FINAL INSPECTION AFTER COMPLETION

4-20-95

James  
Lupton  
2/11/97

I CERTIFY THAT THIS GRADING PLAN IS IN CONFORMANCE WITH THE APPROVED DRAINAGE STUDY ON FILE AT THE CITY OF LAS VEGAS FOR THIS PROJECT.