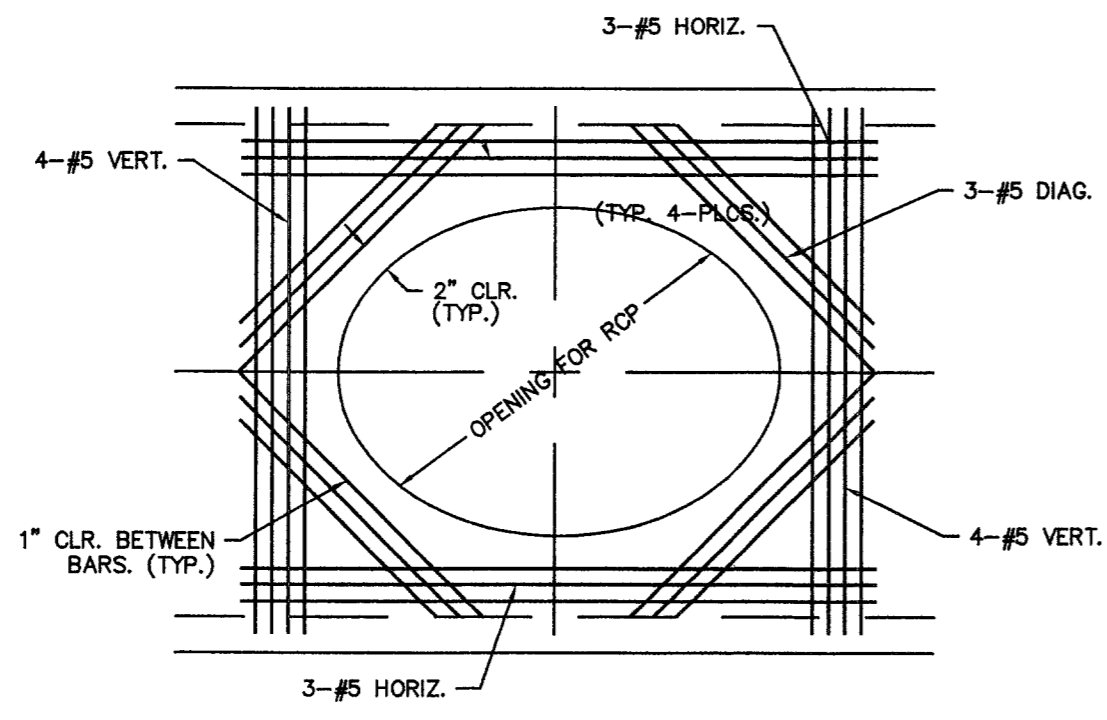
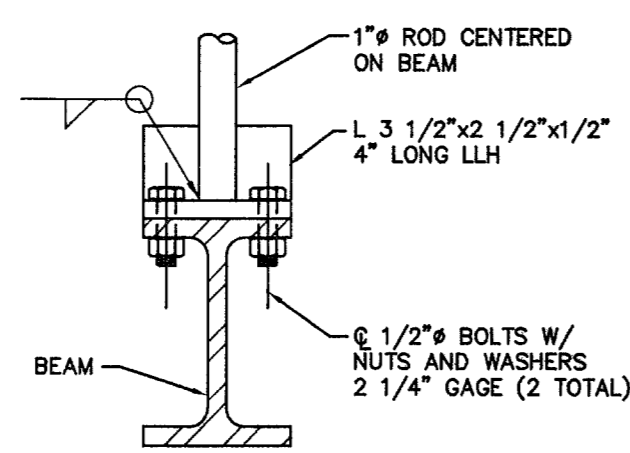


TYPE "CM" DROP INLET SECTION
NO SCALE

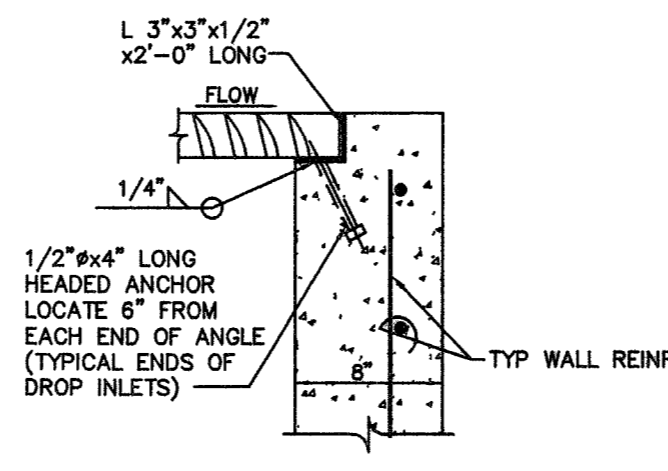
- NOTES:**
1. ALL EXPOSED METALS SHALL BE HOT DIP GALVANIZED AFTER FABRICATION.
 2. PROVIDE 1/2" (MIN.) CLEARANCE ALL AROUND THE STEEL BEAM, DRY PACK AFTER INSTALLATION.
 3. WHEN REQUIRED BY LENGTH OF OPENING, PLATE ANGLE MAYBE DELIVERED IN SECTIONS AND BUTT WELDED IN PLACE.
 4. ALL GALVANIZING DAMAGED BY WELDING SHALL RECEIVE TWO COATS OF GALVALLOY OR EQUAL.
 5. CONCRETE SHALL BE MODIFIED CLASS DA, SEE SPECIAL PROVISIONS SECTION 501.
 6. SEE GENERAL NOTES FOR STRUCTURES ON DWG DS.
 7. ANGLE ANCHORS SHALL BE EMBEDDED MIDPOINT IN EACH ENDWALL AND EVENLY SPACED. (MAXIMUM SPACING OF 2')



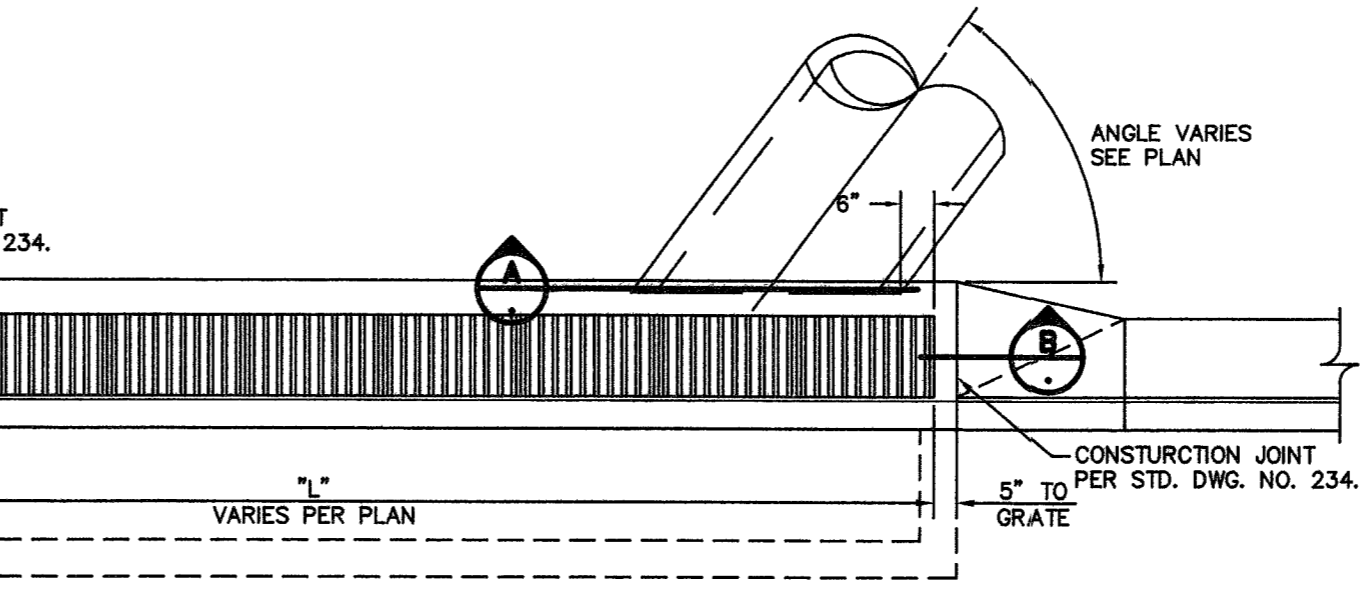
SECTION "A"
NO SCALE



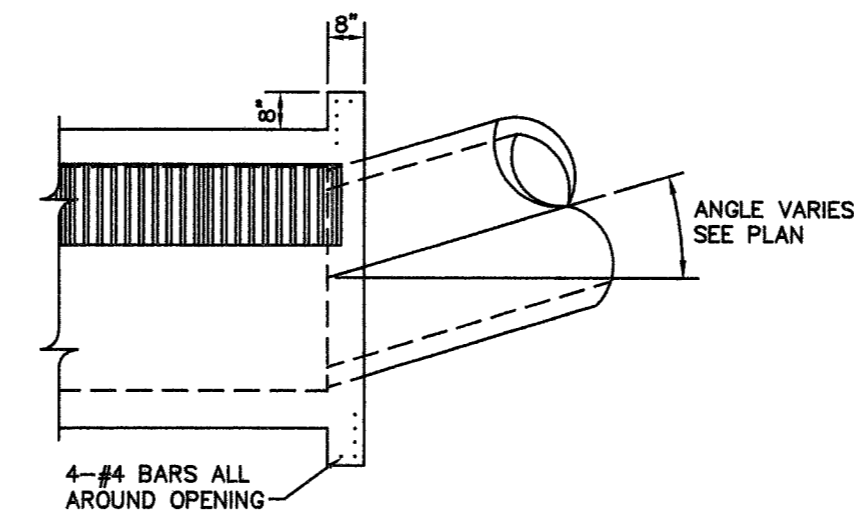
DETAIL "B"
NO SCALE



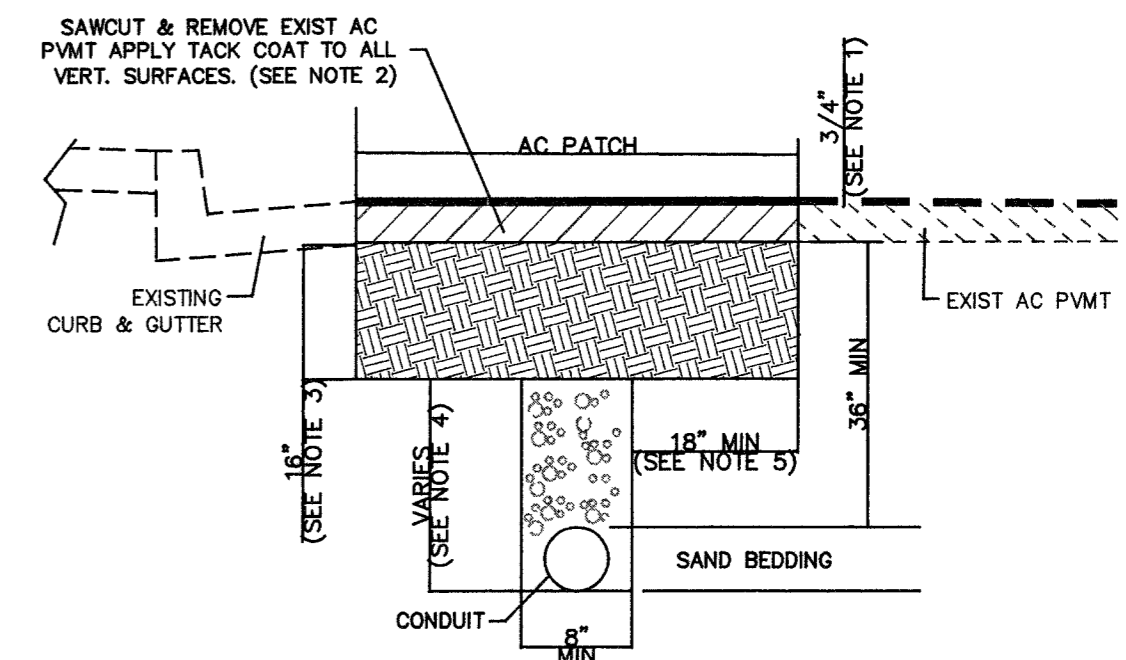
SECTION "B"
NO SCALE



DROP INLET LAYOUT PLAN
NO SCALE

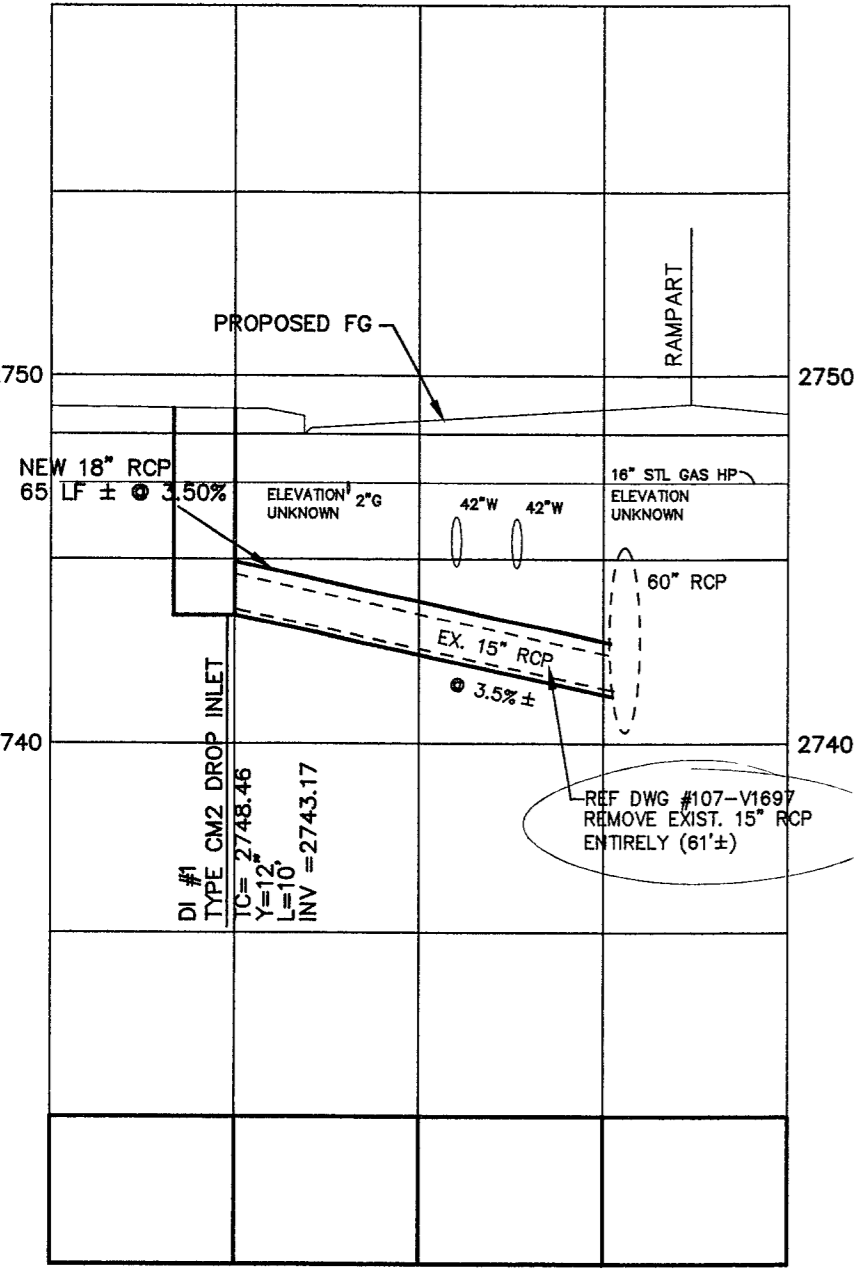


ALTERNATE CONNECTION DETAIL
NO SCALE



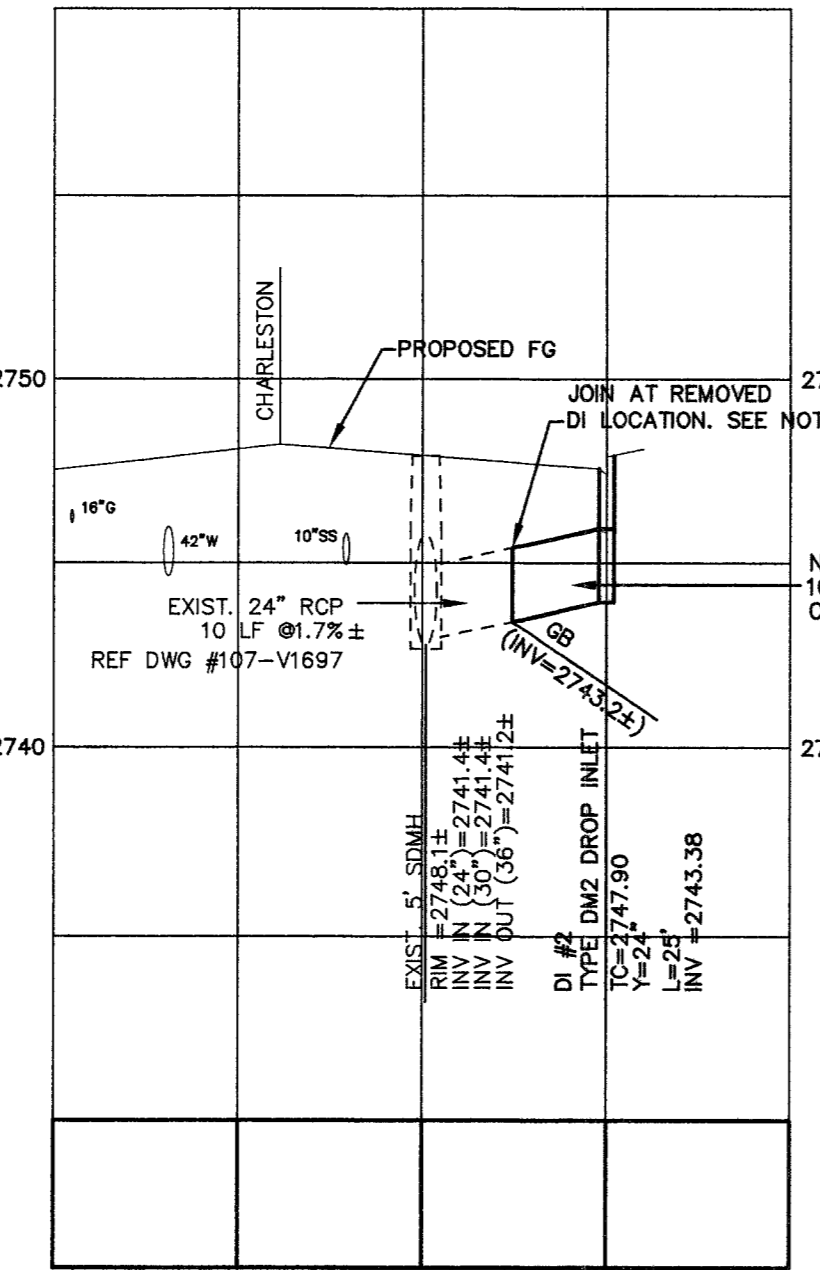
- NOTE:**
1. 3/4" OPEN GRADE (P676-22NV)
 2. 4 INCH MINIMUM DENSE GRADE (P676-22NV) OR MATCH EXISTING, WHICHEVER IS GREATER.
 3. TYPE II AGGREGATE BASE, A MINIMUM OF 16 INCHES TO BE LAID IN MAXIMUM 8 INCH LOOSE LIFTS, 95% COMPACTION REQUIRED.
 4. BACKFILL WITH SELECT MATERIAL TO BASE OF GRAVEL, 90% COMPACTION REQUIRED.
 5. LIMITS OF PAVING SHALL BE DETERMINED BY THE INSPECTOR.

DETAIL "K"
NO SCALE
(NDOT TRENCH DETAIL)



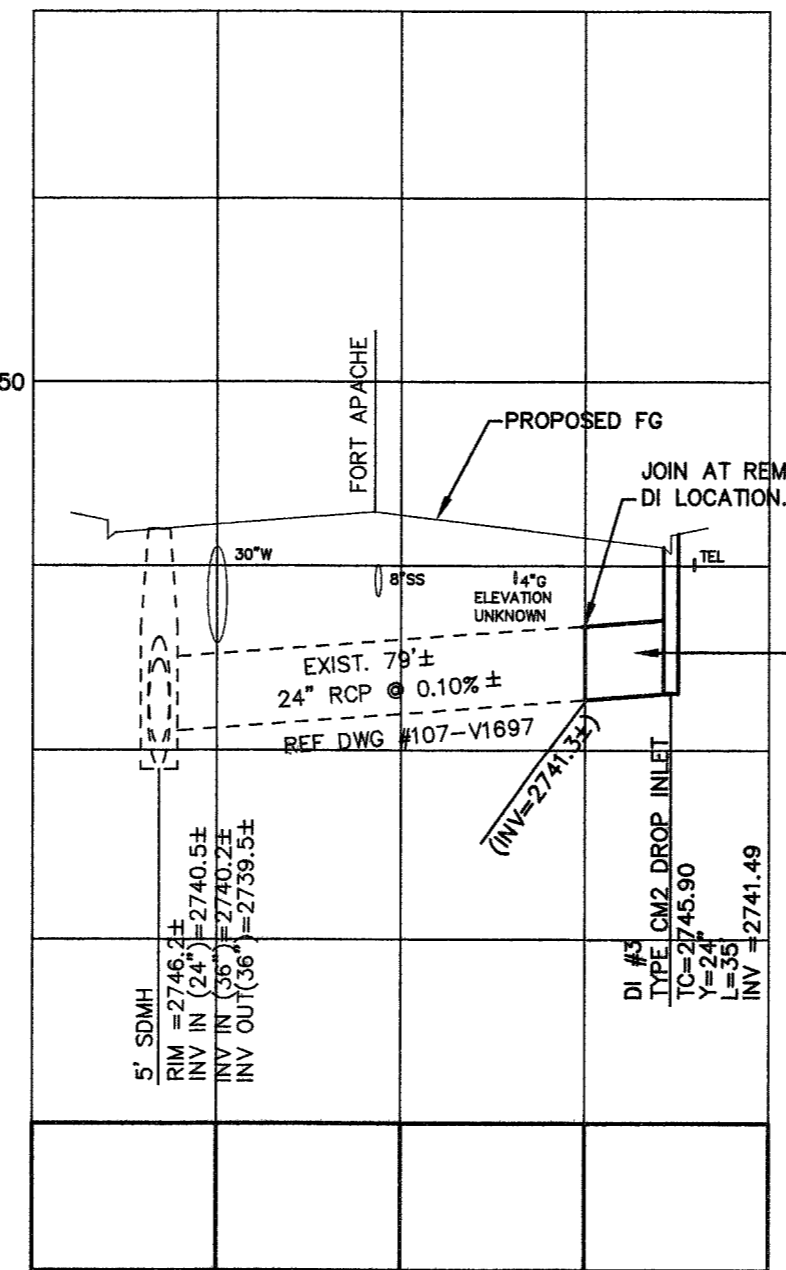
LATERAL #1
DI #1 - STA. 9+13.5, 49.2' LT
NO SCALE
NDOT STA 46+28.254

found existing 18" RCP

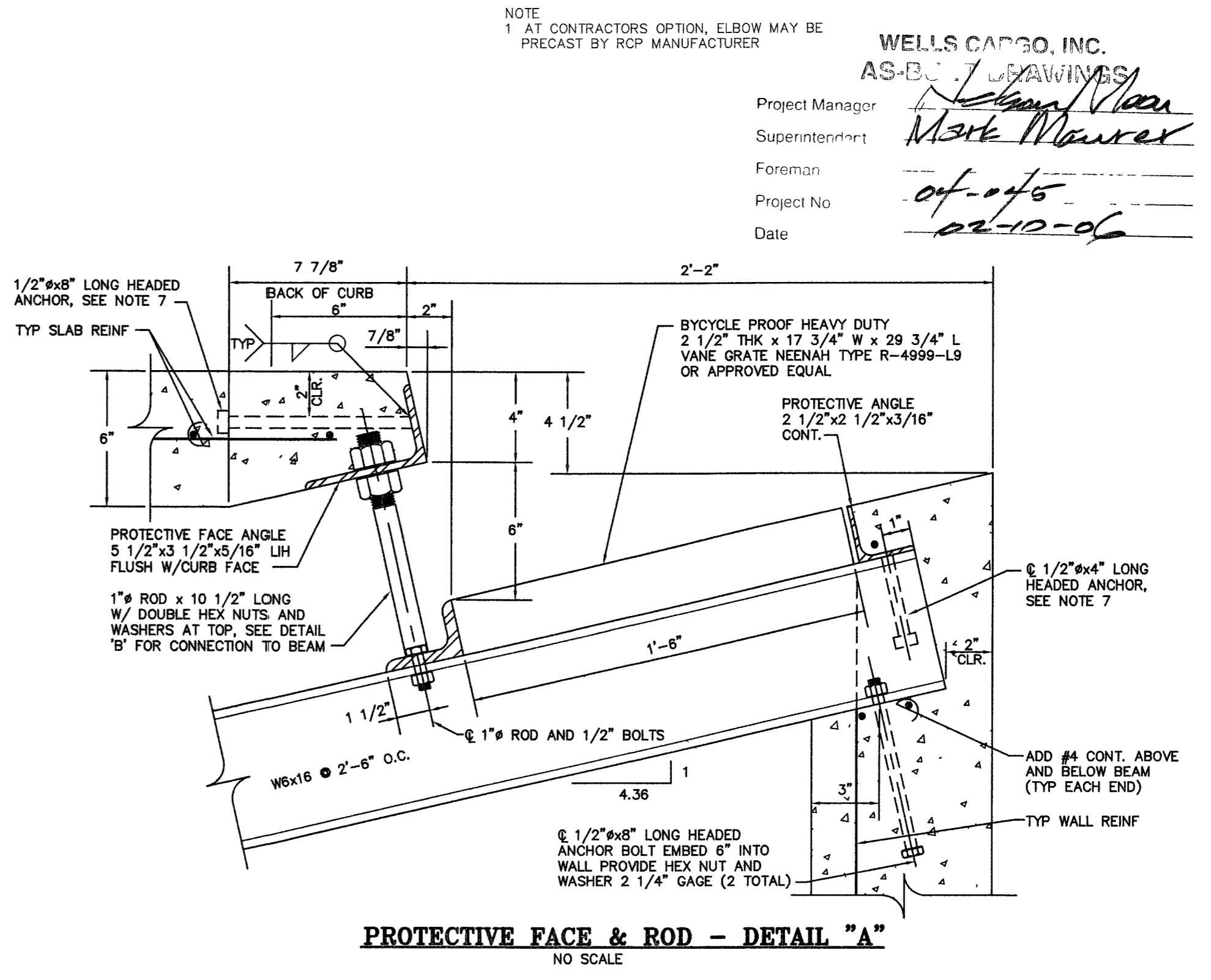


LATERAL #2
DI #2 - STA. 9+00.6, 54.0' RT
NO SCALE
NDOT STA 46+23.629

NOTES:
REMOVE AND REPLACE ANY DAMAGED PIPE TO NEAREST JOINT.



LATERAL #3
DI #3 - STA. 19+04.7, 61.5' RT
NO SCALE



PROTECTIVE FACE & ROD - DETAIL "A"
NO SCALE

NOTE:
1. AT CONTRACTORS OPTION, ELBOW MAY BE PRECAST BY RCP MANUFACTURER

WELLS CAPCO, INC.
AS-BUILT DRAWINGS
Project Manager: *Mark Maurer*
Superintendent: *Mark Maurer*
Foreman: *of-016*
Project No: *02-10-06*
Date: *02-10-06*

NO.	DATE	DESCRIPTION

DEPARTMENT OF PUBLIC WORKS
ENGINEERING DESIGN SECTION
CITY ENGINEER: CHARLES KAJKOWSKI JR. P.E.
PROGRAM MANAGER: THERESA M. HANRAHAN, P.E.
DESIGNED BY: RC
DRAWN BY: RC
CHECKED BY: TMH
HORIZONTAL SCALE: N/A
VERTICAL SCALE: N/A
DATE: JANUARY 2004

INTERSECTION IMPROVEMENTS
CHARLESTON BLVD. and FORT APACHE RD.
DETAILS

THERESA M. HANRAHAN
ENGINEER-STATE REGISTERED
EXPIRES 03/30/05
CIVIL
No. 5866

Sheet
CF-10
12 of 30
DRAWING NO.
107-V3720

71810 92859

10703694

BID #05.1730.07 STP-0159(009)