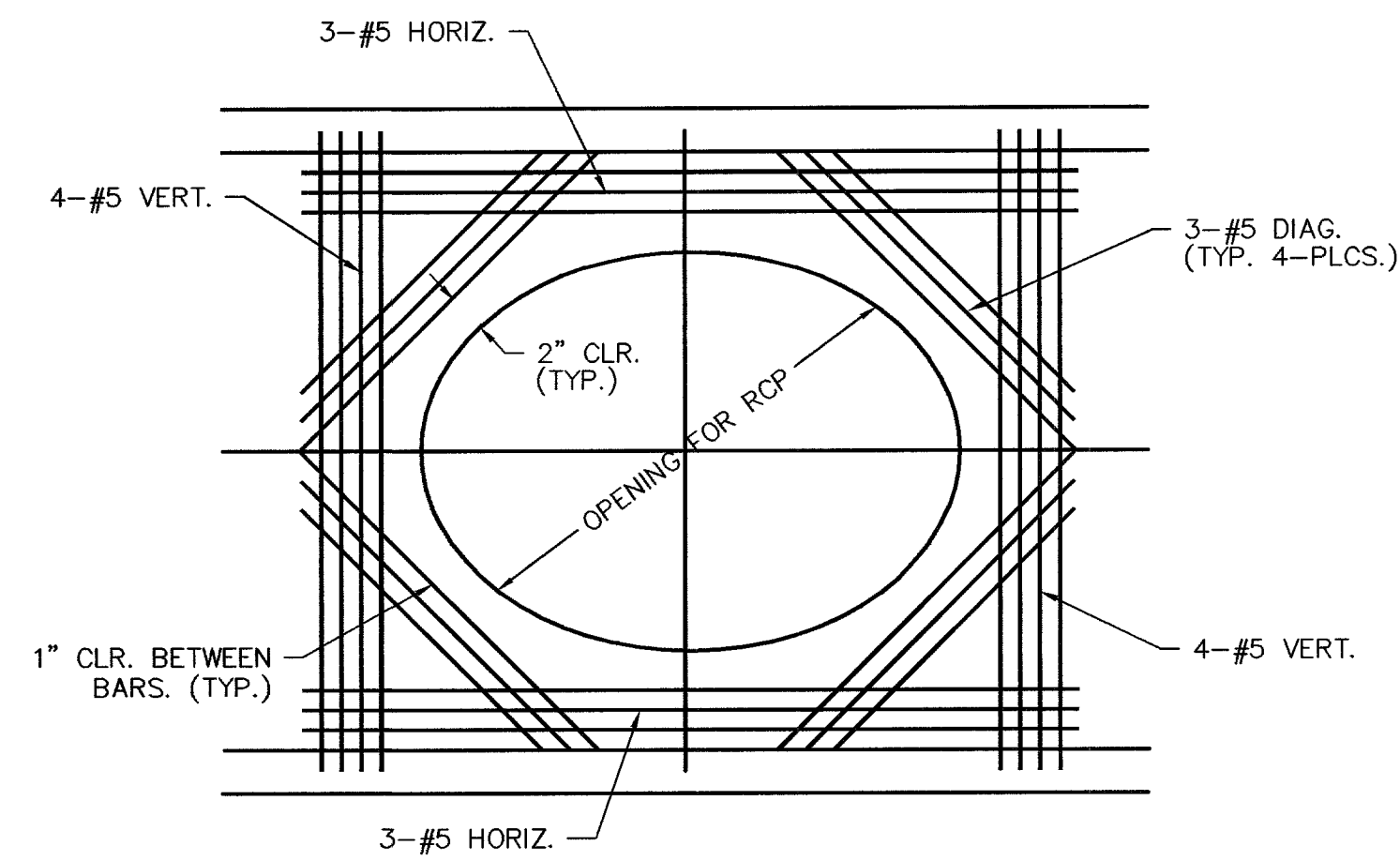
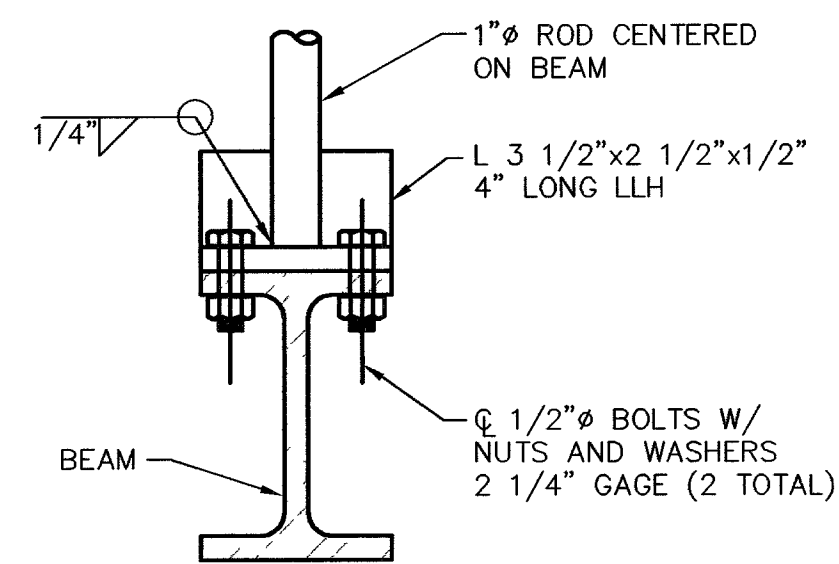


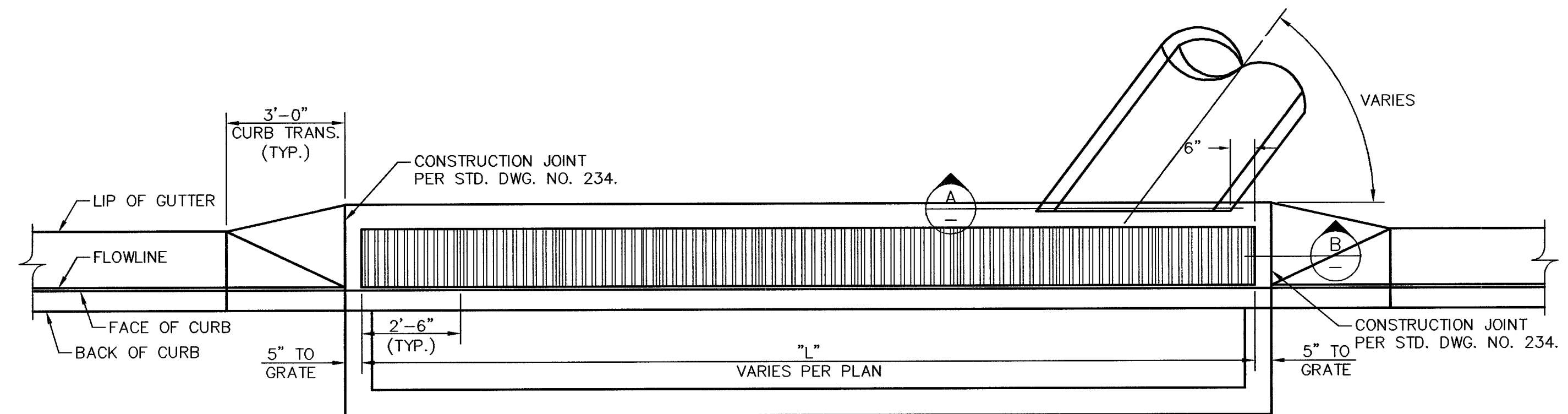
TYPE "CM2" DROP INLET SECTION
SCALE 3/4"=1'



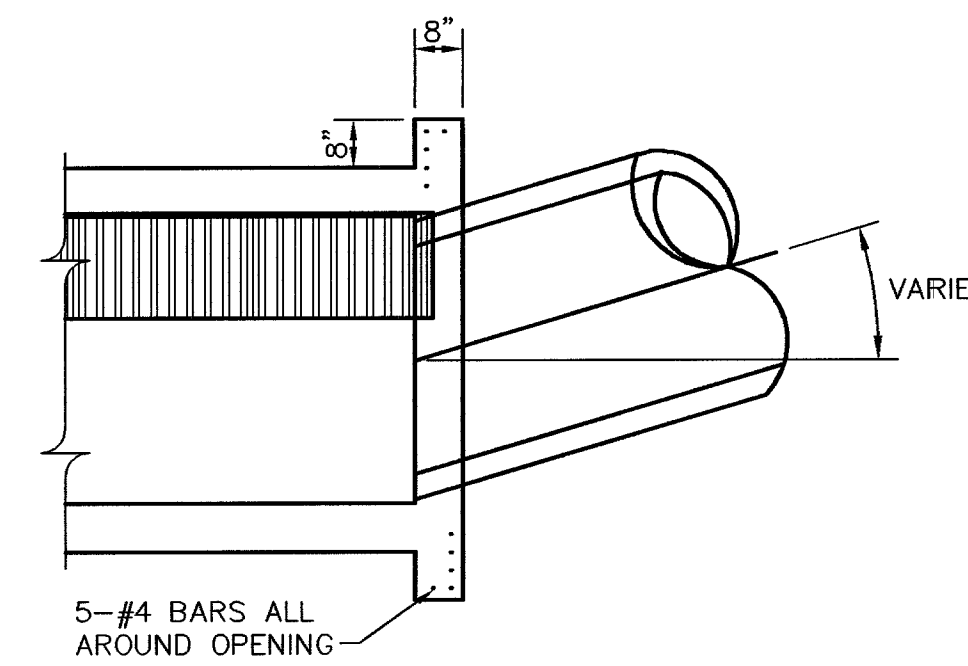
SECTION "A"
SCALE 3/4"=1'



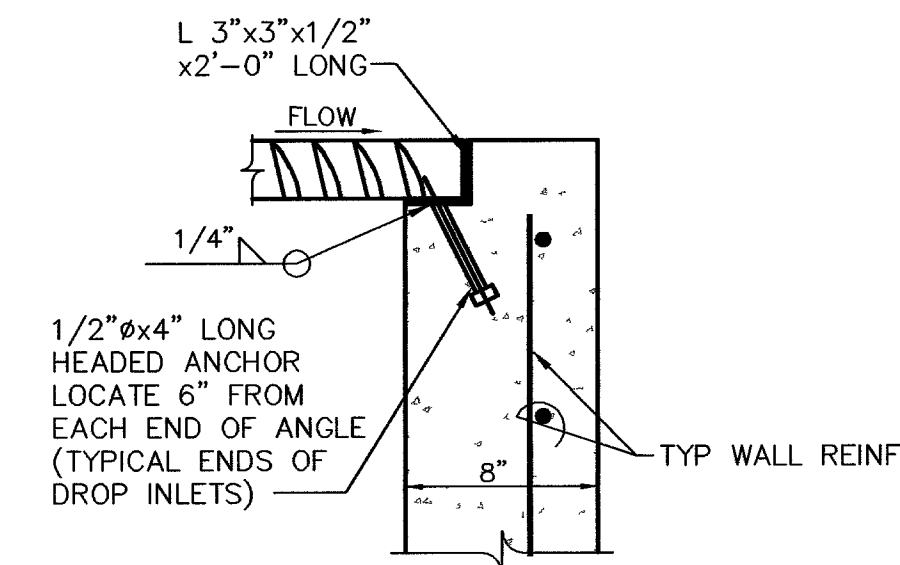
DETAIL "B"
SCALE 3"=1'



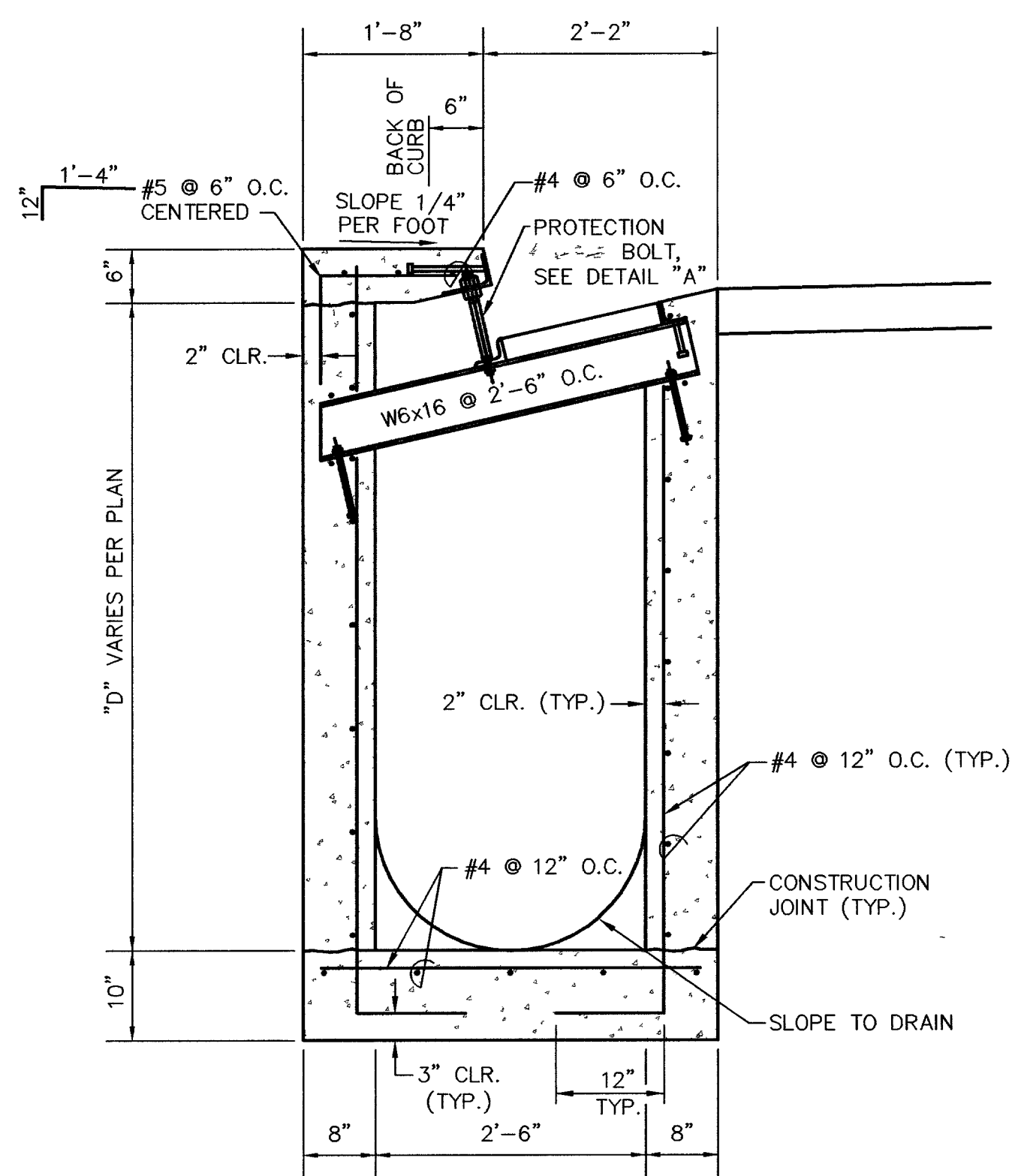
DROP INLET LAYOUT PLAN
SCALE 3/8"=1'



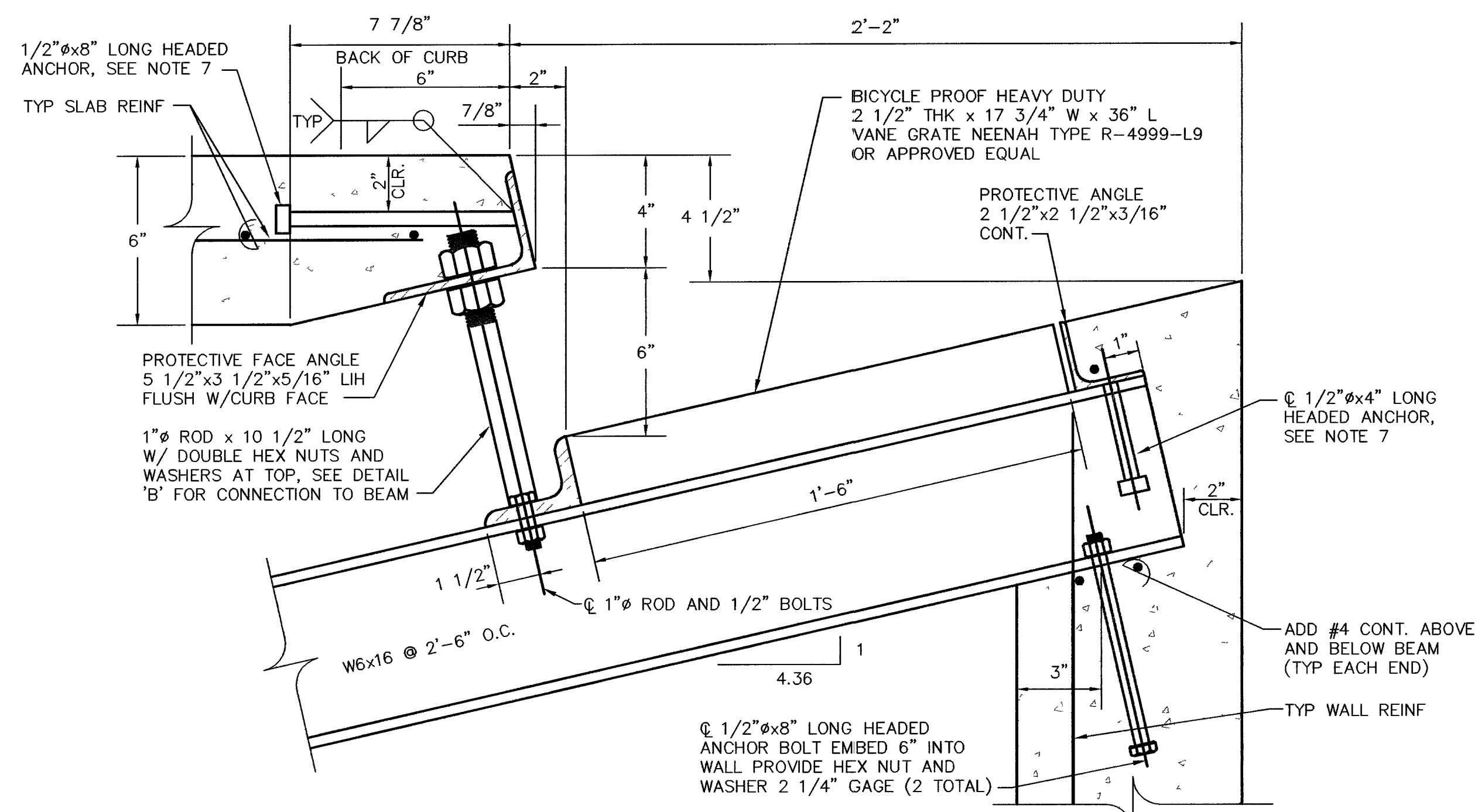
ALTERNATE CONNECTION DETAIL
SCALE 3/8"=1'



SECTION "B"
SCALE 1-1/2"=1'



TYPE "DM2" DROP INLET SECTION
SCALE 3/4"=1'



PROTECTIVE FACE & ROD - DETAIL "A"
SCALE 3"=1'

NOTES:

1. ALL EXPOSED METALS SHALL BE HOT DIP GALVANIZED AFTER FABRICATION.
2. PROVIDE 1/2" (MIN.) CLEARANCE ALL AROUND THE STEEL BEAM. DRY PACK AFTER INSTALLATION.
3. WHEN REQUIRED BY LENGTH OF OPENING, PLATE ANGLE MAYBE DELIVERED IN SECTIONS AND BUTT WELDED IN PLACE.
4. ALL GALVANIZING DAMAGED BY WELDING SHALL RECEIVE TWO COATS OF GALVALLOY OR EQUAL.
5. CONCRETE SHALL BE MODIFIED CLASS DA.
6. ANGLE ANCHORS SHALL BE EMBEDDED MIDPOINT IN EACH ENDWALL AND EVENLY SPACED. (MAXIMUM SPACING OF 2')

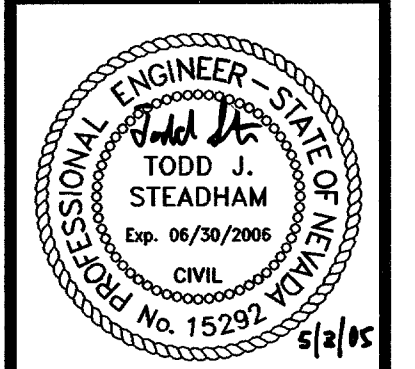
NO.	DESCRIPTION	DATE	BY	APP.

LAS VEGAS, NEVADA

PARDEE HOMES OF NEVADA
TOWN CENTER L-TC 55 NO. 4
DROP INLET DETAILS

SECTION 19
TOWNSHIP 8 SOUTH
RANGE 60 EAST, M.D.M.

DATE: 5/2/05
DRAFTER: JDP
DESIGNER: JDP
CHECKED: TJS
PROJECT NO.
PAR0302-006



D-4
SHEET 23 OF 25
10744733-4